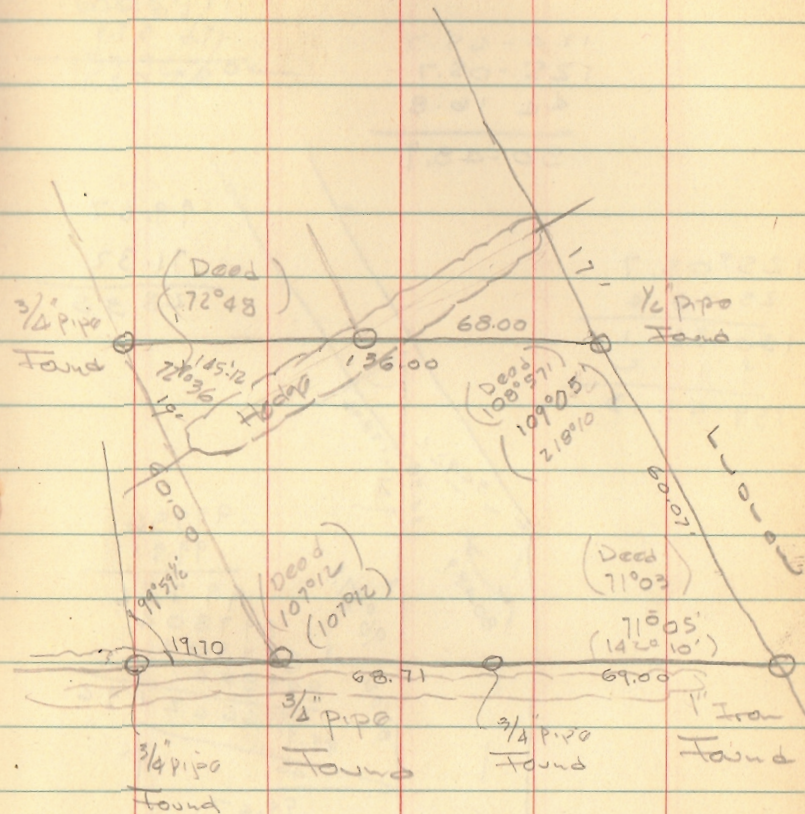
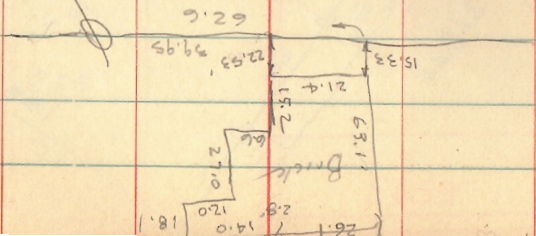
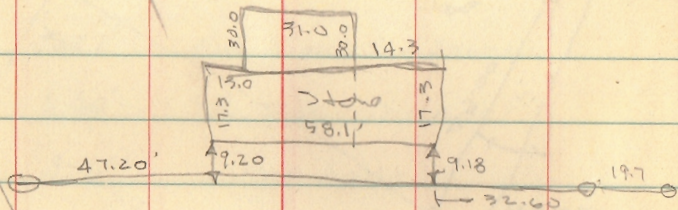
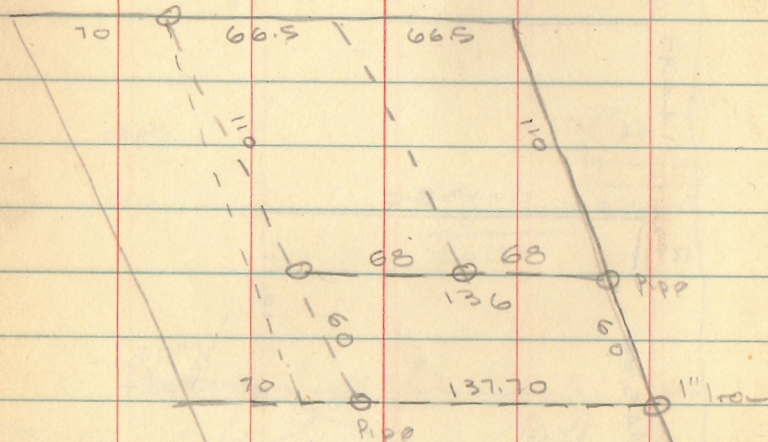


DAVIDSON
 BELLEFONTAINE
 SPRING @ LUDLOW

9-25-63

35



INDEXED ON MAP
 2171

October 13-1910

Torkey survey part of lots
133-134 & 135 in McCalloch's
Addition to Bellefontaine

Set spike w center spring in west
line of lot 133 produced

Bearing of Spring Ave - $N 86^{\circ} W$
Measured SW angle Ludlow - Spring - Jay
Park and Colton - $109^{\circ} 40'$

Then on of Ludlow measured South
15.76 for north line of property
to be full \rightarrow SW 3.95 chains

South property line Spring - $31.95'$ south
of Spring sp of Ludlow.
($30 \div \cos 19^{\circ} 40'$)

Deeds - Measured along fence east
side lot - in which Torkey house
along 4.06 chains - flat along
3.95

On west line Torkey - 3.99 m
fence

Spring and Ludlow - Iron Bar
Hyd. NW - $49.10'$ Ely - $6'$ - NE - $22.5'$
Gate post - SE - $45.15'$ Ely height
pole - SW - $25.30'$

Spring and Newell -

Spring and Park - Iron Bar
Ely. Light pole - NE - $27.4'$ - old
fence post NE - $33.93'$ - Center of
piece of river - lower cement step -
(well) south - $31.15'$

Colton and Ludlow -

$\$1571$ poles

3.95 chains

$\frac{4}{3560}$

INDEXED ON MAP

2177

10/4/1910

Measured from Φ Spring to SW
Deeds 451 chains

Leaving - south line orchard S 84° E
- Ludlow Street - N 15° W

On line orchard produced cuts
 Φ Ludlow - 4.14 chains to S line
Spring

Turned a $69^{\circ}04'$ from set up in
Ludlow place at Spring and
south line Orchard -
Measured on this line

West - 24' long set NE Φ Dairy
pole - Witness - Telephone
pole SE: 24.5 Stake - east
(across Ludlow) - on line produced
60.57'

East side - Dairy pole - 4.23 chs
67.6 chains on south line Dairy
West line Dairy - 4.25 chs

$$\begin{array}{r} 2 \\ 2 \\ \hline 4 \\ 4 \\ \hline 8 \\ 8 \\ \hline 16 \end{array}$$

30.00	1924
1802	32.12
1984	28.45
1868	60.57
1400	
934	
1460	

$$\begin{array}{r} 3 \\ 3 \\ \hline 6 \\ 6 \\ \hline 12 \\ 12 \\ \hline 24 \end{array}$$

with line Dairy -
SE Φ Deeds 2+62
SE Φ Newgane 3+50
SE Φ Turkey house lot - 4+91
West side Ludlow - 5+70

Witnesses Colton - Ludlow line
Electric light pole - NW - 33.10
3/8" double bracket - NW - 43.20
fence post SW Φ Ludlow Colton - W - 29.0
Telephone pole SW - 54.45
Elec. light pole SE - 23.40
at the end