

Survey of part of Military  
Survey 3317 for John F. Dickinson

(Lake Top.)

$$\begin{array}{r} 13.41 \\ 13.78 \\ \hline 27.19 \\ 23.595 \end{array}$$

$$\begin{array}{r} 2206 \\ 73.60 \\ \hline 13236 \\ 6618 \\ 2206 \\ \hline 300016 \end{array}$$

2206

(2206)

$$\begin{array}{r} 1360 \\ 1360 \\ \hline 2720 \\ 2720 \\ \hline 5440 \\ 2720 \\ \hline 8160 \\ 2720 \\ \hline 10880 \\ 2720 \\ \hline 13600 \end{array}$$

Stone

N. 85 E  
55.10 P.

90 1/2

Stone.

Record.  
H. Tempo M<sup>c</sup> Crocker  
to  
John F. Dickinson

Vol. 109

Page. 472-473

July 5, 1910

N. 54 W  
171.40 P.

69.5 Ac.

S. 50 E  
153.30 P.

Stone.

S. 86 W  
40.10 P.

Stone

Stone.

S. 162 1/2 E  
61 P.

INDEXED ON MAP

2170

N. 10 1/2 W  
65.30 P.

Road # 2

S. 85 W  
40.20 P.

Stone

A

69 ch  
57  
8

4 55.10  
13.76

.64  
.58  
512 114  
320 411  
3712

3200 22.260  
19 165  
311504  
30664

38.33 21.77  
19165  
26050

13.78  
78  
13.60

\* 153.30  
38.33  
115.30

12  
157  
84  
60  
2684

13.78  
187  
13.41

6.2  
7  
5.5

2.06  
2.77  
29

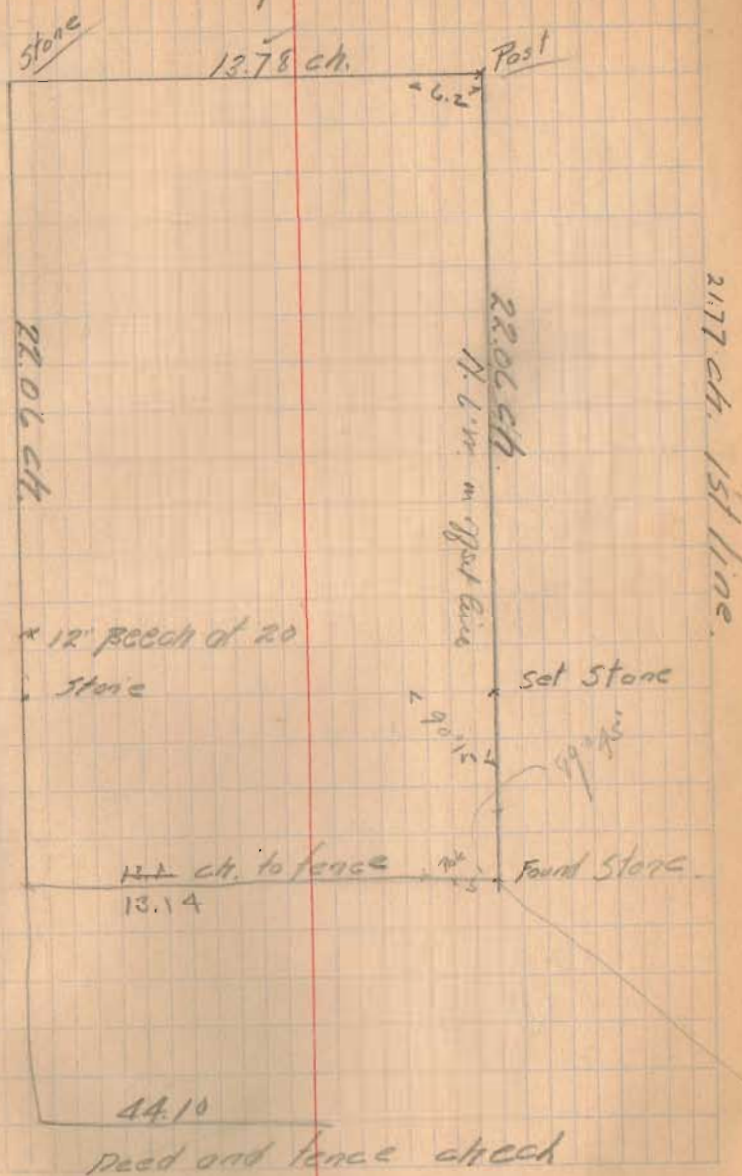
22.29 chains

13.14  
13.76  
26.92  
13.46

11880  
10718  
112

13.46 30000  
2692  
3060  
2492  
3560  
2692  
11880

Survey



Deed and fence check