

Survey of lot 612 for
Paul Richter 3-11-12

X High and Detroit
stage on top of ground.

X Elm and High "M"

X Elm and Williams "M"

X Detroit and Williams.

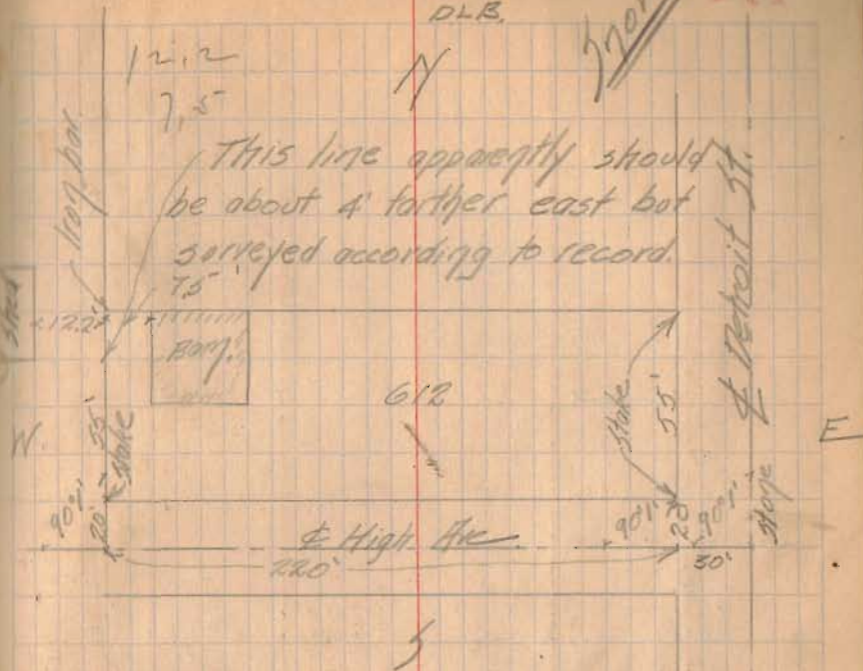
Lead points are set in the circular
curb at each corner of the intersection
and 14' from the center line.

Lot 612 is 55' x 220'

N.W. angle High and Detroit
90° 1'

Distance center of High Av.
to N face of S. curb of lot
along top of Detroit 240.55

Width between faces - Jan 16³⁰



As surveyed for Paul Richter
March 11, 1912.

See City Survey 890 4-19-32
City Book 274 Page 32

INDEXED ON MAP

2180