

REC'D 7-28-98 SJM OK ✓



# Lee Surveying and Mapping Co., Inc.



Land Surveys • Topography • Subdivisions • Construction Layout

117 N. Madriver Street  
Bellefontaine OH 43311

Phone: (937) 593-7335  
Fax: (937) 593-7444

## B.U.R.D., AN OHIO GENERAL PARTNERSHIP 0.082 ACRE

Lying in the City of Bellefontaine, Lake Township, Logan County, Ohio.

Being out of the B.U.R.D., an Ohio General Partnership, city Lot 45 and part of Lot 52 a deeded and described in Official Record 349, Page 735, and being more particularly described as follows:

Beginning at a screw bolt set at the northwest corner of Lot 45.

THENCE, with the south line of Watson Way (16.5 feet wide) and the north line of Lots 45 and 52, S 89°-51'-35" E, a distance of 79.56 feet to a 5/8 inch iron rod found.

THENCE, with the west line of the Paula Wammes and Shelley Wammes part of Lot 52 (Vol. 407, Pg. 603, second tract), S 0°-00'-00" W, a distance of 44.90 feet to a point, passing the southeast corner of a masonry block building at 44.79 feet.

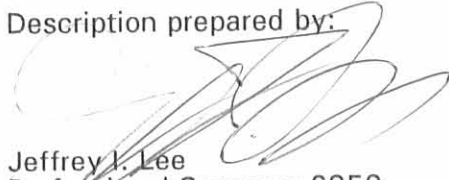
THENCE, parallel to the south wall of the said building and 0.1 feet distant, N 89°-57'-23" W, a distance of 79.67 feet to a MAG nail set.

THENCE, with the east line of Lot 36, N 0°-08'-03" E, a distance of 45.04 feet to the point of beginning.

Containing 0.082 acre.

The basis for bearings is the center-line of Detroit Street being N 0°-00'-00" E, and all other bearings are from angles and distances measured in a field survey by Lee Surveying and Mapping Co., Inc. on July 22, 1998.

Description prepared by:

  
Jeffrey J. Lee  
Professional Surveyor 6359  
July 24, 1998



ORIGINAL STAMP IN GREEN

L 1067

INDEXED ON MAP  
2192 ID

WATSON WAY

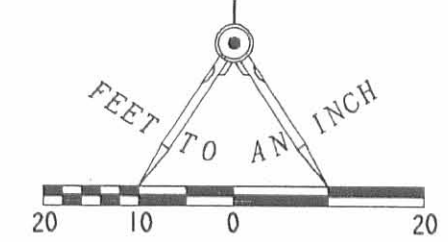
16.5' ALLEY

CENTRAL COURT 16.5' ALLEY

DETRIOT STREET (60')

BASIS FOR BEARINGS N 00°00'00"E

SCALE 20



LEGEND

- 5/8" IRON ROD FOUND
- MAG NAIL SET
- ⊕ SCREW BOLT SET
- ⊗ CHISELED "X" IN CONCRETE FOUND
- ⊗ P.K. NAIL FOUND



0.082 ACRE

ANTHONY MOON AND CAROL MOON LOT 36 VOL. 14, PG. 834

PAULA WAMMES AND SHELLEY WAMMES LOT 52 & 57 VOL. 407, PG. 603

B.U.R.D. O.R. 349, PG. 735

SURVEY OF 0.082 ACRE OUT OF LOTS 45 AND 52 OWNED BY B.U.R.D.. AN OHIO GENERAL PARTNERSHIP OFFICIAL RECORD 349, PAGE 735 CITY OF BELLEFONTAINE LAKE TOWNSHIP LOGAN COUNTY, OHIO

2 WORKING DAYS BEFORE YOU DIG CALL TOLL FREE 800-362-2764 OHIO UTILITIES PROTECTION SERVICE.

INDEXED ON MAP 2192 1P



SURVEYED BY: JEFFREY L. LEE PROFESSIONAL SURVEYOR 6359 JULY 22, 1998

ORIGINAL STAMP IN GREEN  
 COPYRIGHT 1998 BY: LEE SURVEYING & MAPPING CO., INC. 117 North Madriver Street BELLEFONTAINE, OHIO 43311 (937) 593-7335 D-329 REARWARD L-1067-3

28

Survey of lots 45 & 52  
for H. M. Appert

Sandusky to Columbus of Detroit 526.5  
Measured 525.4

1.1

Sandusky to Columbus of Elm 526.5  
Measured 526.1

0.4

Elm to Detroit of Sand 501.5  
Measured 496.9

4.6

Elm to Detroit of Columbus 501.5  
Measured 500.5

1.0

Shortage per lot of Co's 12  
7 1/2" = 6"

55  
28.62  
43.62  
24  
83.3

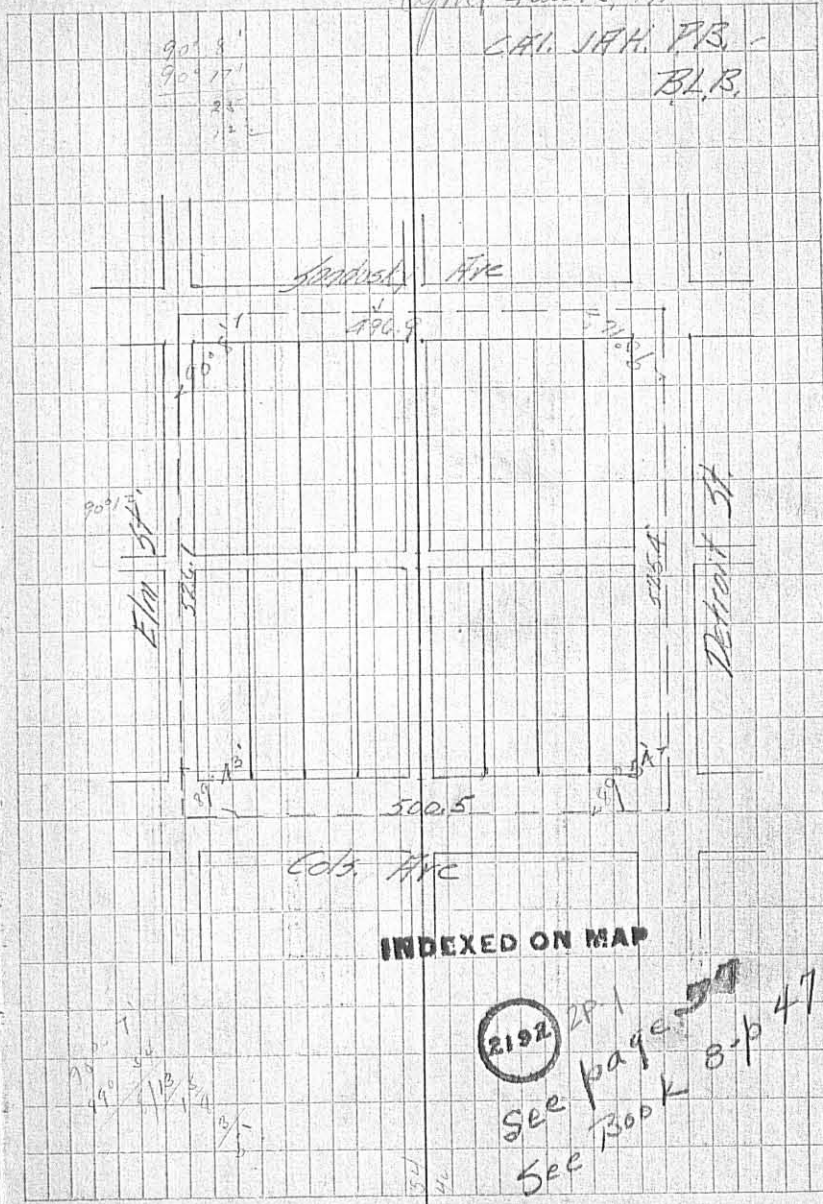
11 1/2" 13 1/2" 14"

29

8/24/3

April 4ands, 1912

CAL. J.A.H. P.B.  
B.L.B.



INDEXED ON MAP

2192

See page 37  
See Book 8-p 47

30

79.20  
72.95  
-----  
.28

40  
110 x 28

110  
20  
-----  
150

28  
11

11/112 (10)

193.95

115

-----  
78.95

2/1.1

.55

.55  
149.45

40

220

2

268

55

-----  
267.45

4.6

10

2/5.6

2.8

8/2.8

.35

78.38

4

-----  
79.38

30

165

195

-----  
1.05

8/1.05

7.6

193.95

115

-----  
78.95

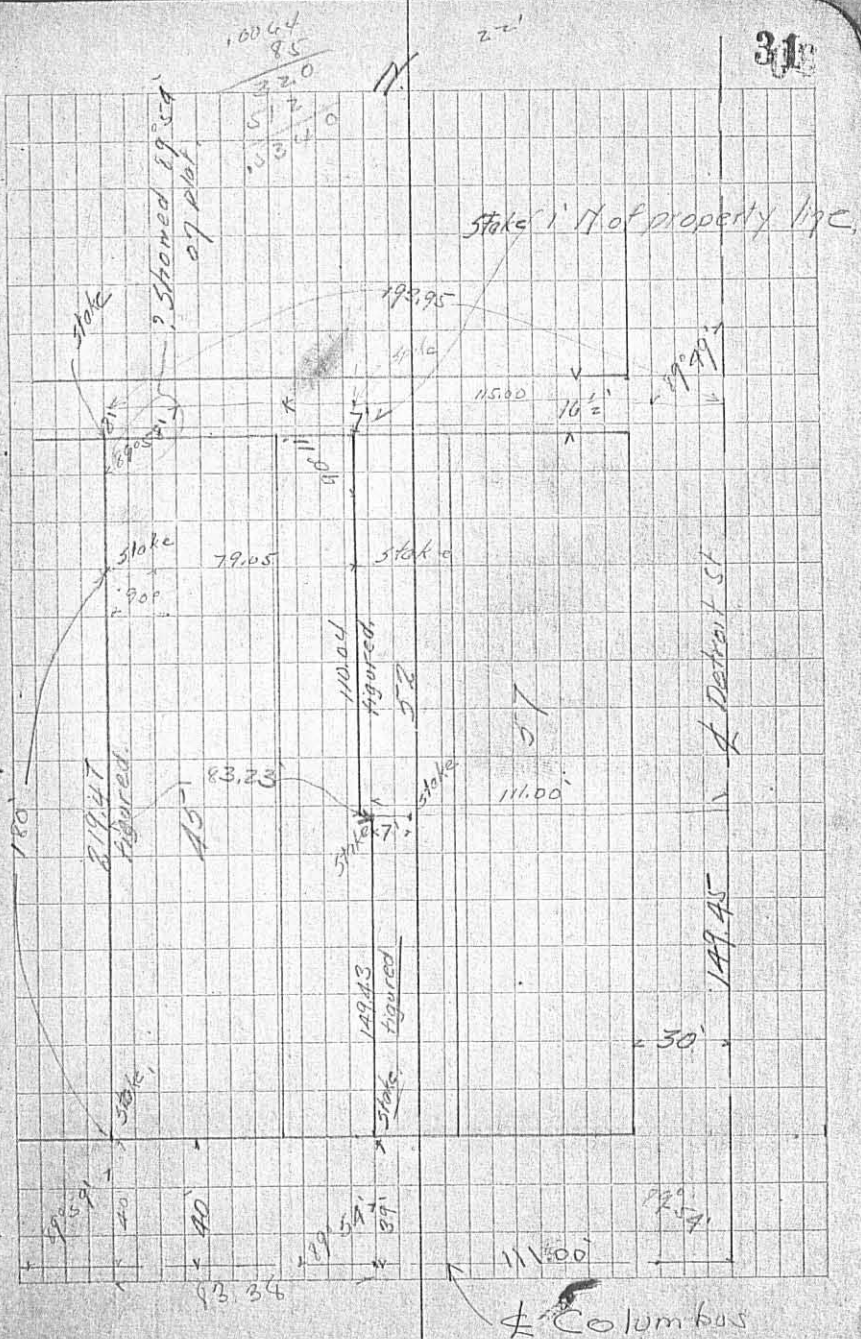
July 2, 1912

Set stake on west line 190' from stake at at SW corner

Set stake 4' S. of SW. cor. and on west line

Measure east 79.05' at rt angle to west line from stake at 190' N. of sw. corner and set stake

31



INDEXED ON MAP  
2192 282

INSKEEP #4

563 Annat Building 8/2 1912

Stake A, B, D, <sup>3</sup>/<sub>4</sub> E set by Inskeep

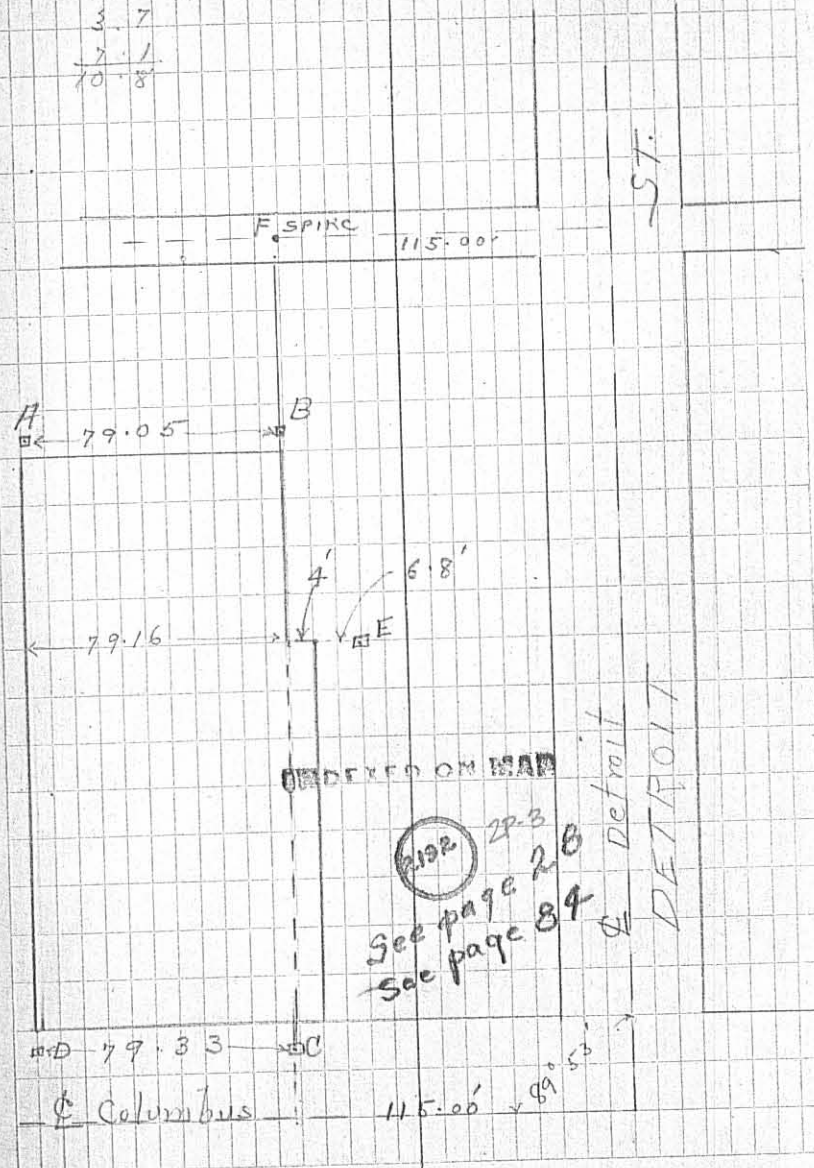
See page 31

stand at F gone, drove spike  
set stake at C 4' West and 4' South  
of S.E. Corner

CD = 79.33

Stake E 6.8 East of E. end of 4' line.  
Distances check as shown

59°-53'  
C.M.R. S. McCoid O.C.R. 590



47

B.M. Cols and Alley  
W of Detroit.

47.97.

90-03  
89-57Lot 46 and part of Lot 52  
Bellevue 0

San Sewer

E of Alley E=56.60

Grade 0.75%

Storm Sewer

10" Water main on E Cols Ave 4'±

3" Gas main 15 W of E 3'±

No at 83-95-118 and 126

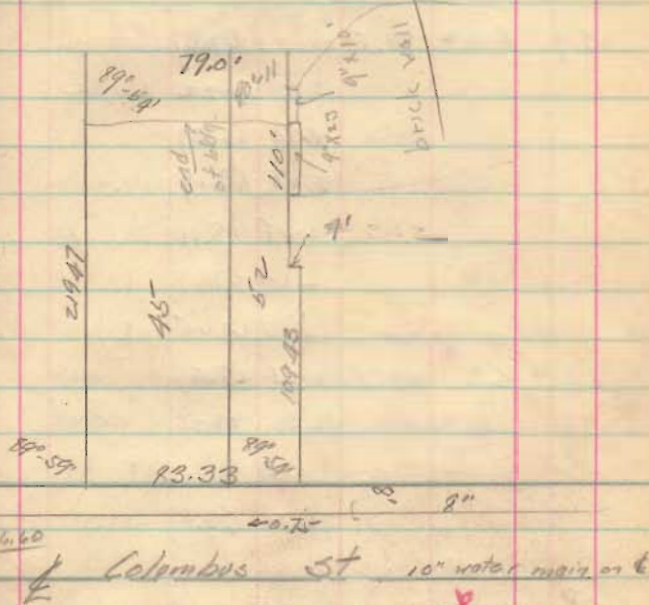
Ditt Gort E and City

-1168.28

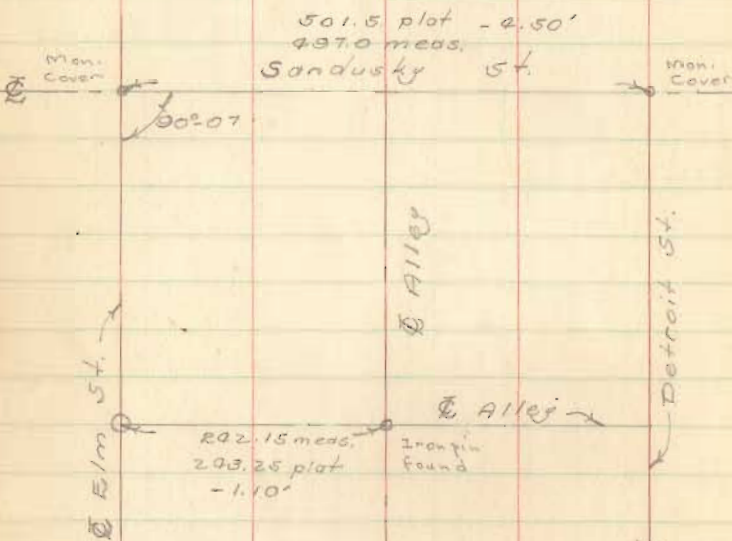
E Cols and Main

B.M. CH. 79.88

47

See Insteep  
Book 4-page 20

Lot # 6  
Bellefontaine Ohio



Note -

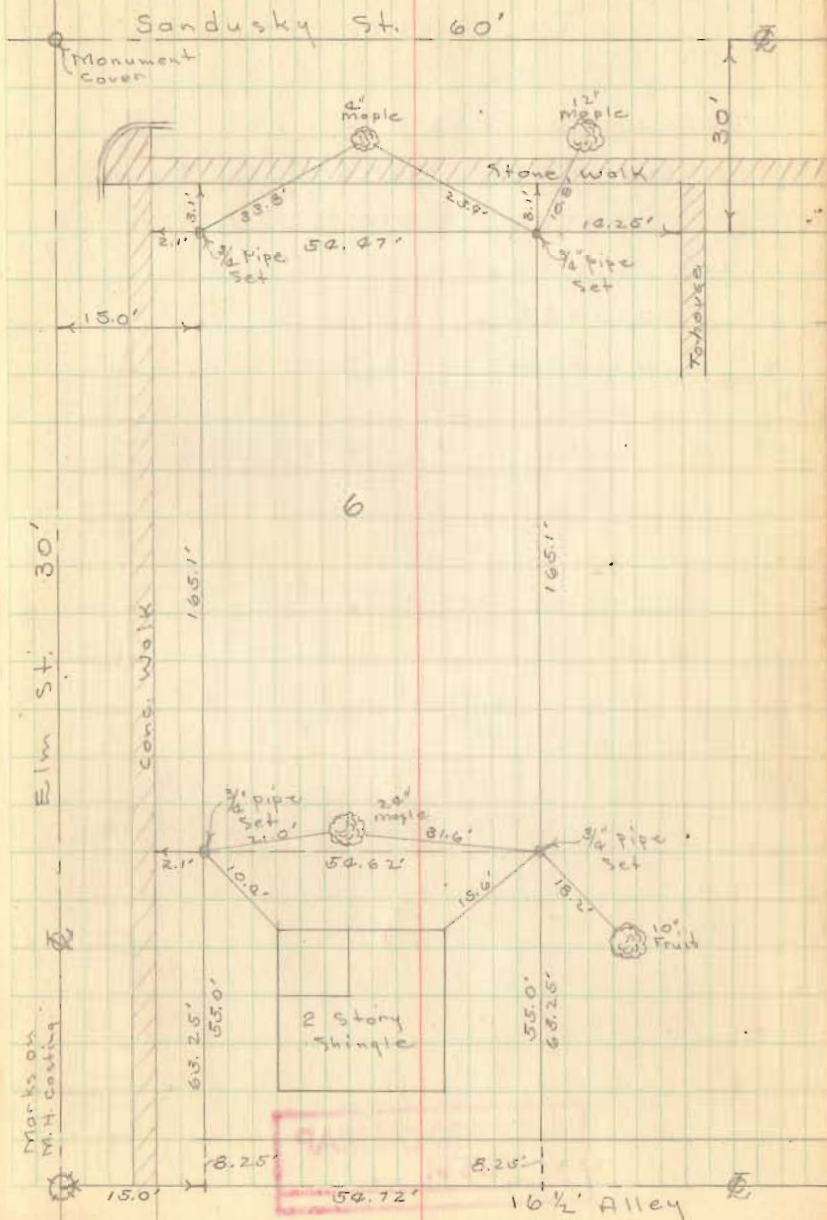
1'-4" (1.33') strip vacated  
along E. side of Elm St.  
Property line is 13.67' E. of  $\odot$   
I set irons on lot line = 15' E. of  $\odot$

**INDEXED ON MAP**  
**2192**

D. L. Dodson  
Tom Richardson  
Chas. Nichols

April 3, 1954  
40°

66



Survey of lots 45 & 52  
for H. M. Ayer

Sandusky to Columbus of Detroit 526.5  
Measured 525.4

1.1

Sandusky to Columbus of Elm 526.5  
Measured 526.1

0.4

Elm to Detroit of Sand 501.5  
Measured 496.9

4.6

Elm to Detroit of Columbus 501.5  
Measured 500.5

1.0

Shortage per lot of Cols 12

$$7\frac{1}{2}'' = .62$$

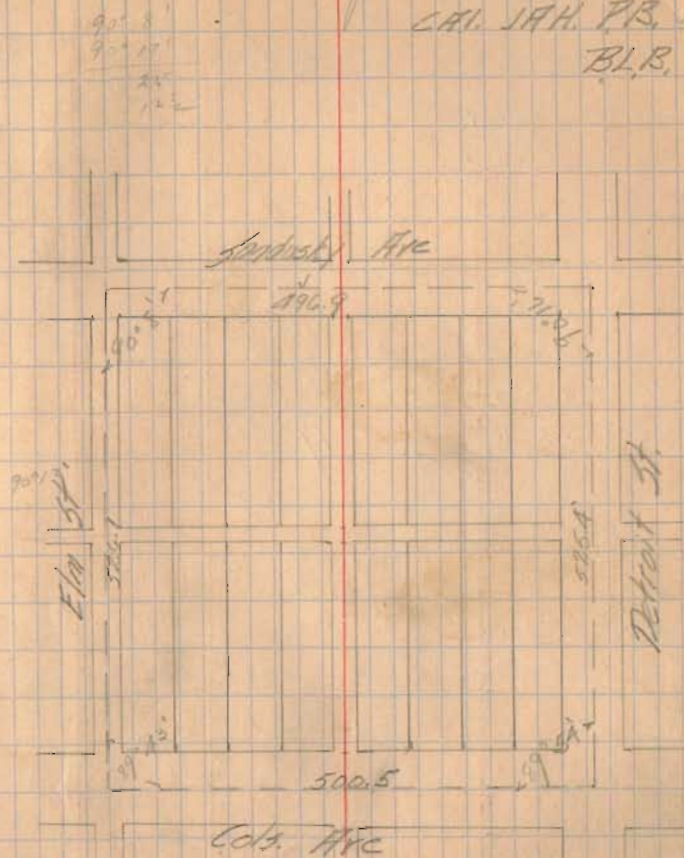
$$\begin{array}{r} 55 \\ 28.62 \\ \hline 83.62 \\ 24 \\ \hline 83.38 \end{array}$$

$$\begin{array}{r} 211 \\ 55 \\ \hline 156 \end{array}$$

$$\begin{array}{r} 15 \\ 15 \\ \hline 30 \end{array}$$

$$\begin{array}{r} 11 \\ 11 \\ \hline 22 \end{array}$$

April 4 and 5 1911  
CAL. JAH. P.B.  
B.L.R.



INDEXED ON MAP

2192

See page 97  
See Book 8-p 47



79.20  
78.95  
— 28

$\frac{40}{110} \times 28 =$

110  
20  
160  
35  
149.45

28  
11/112 (10)

193.95  
115  
— 78.75

2/1.1  
55

40  
220  
2  
268  
55  
267.45

28.38  
9  
— 19.36

46  
10  
2/8.6  
5/2.81  
35  
10.5

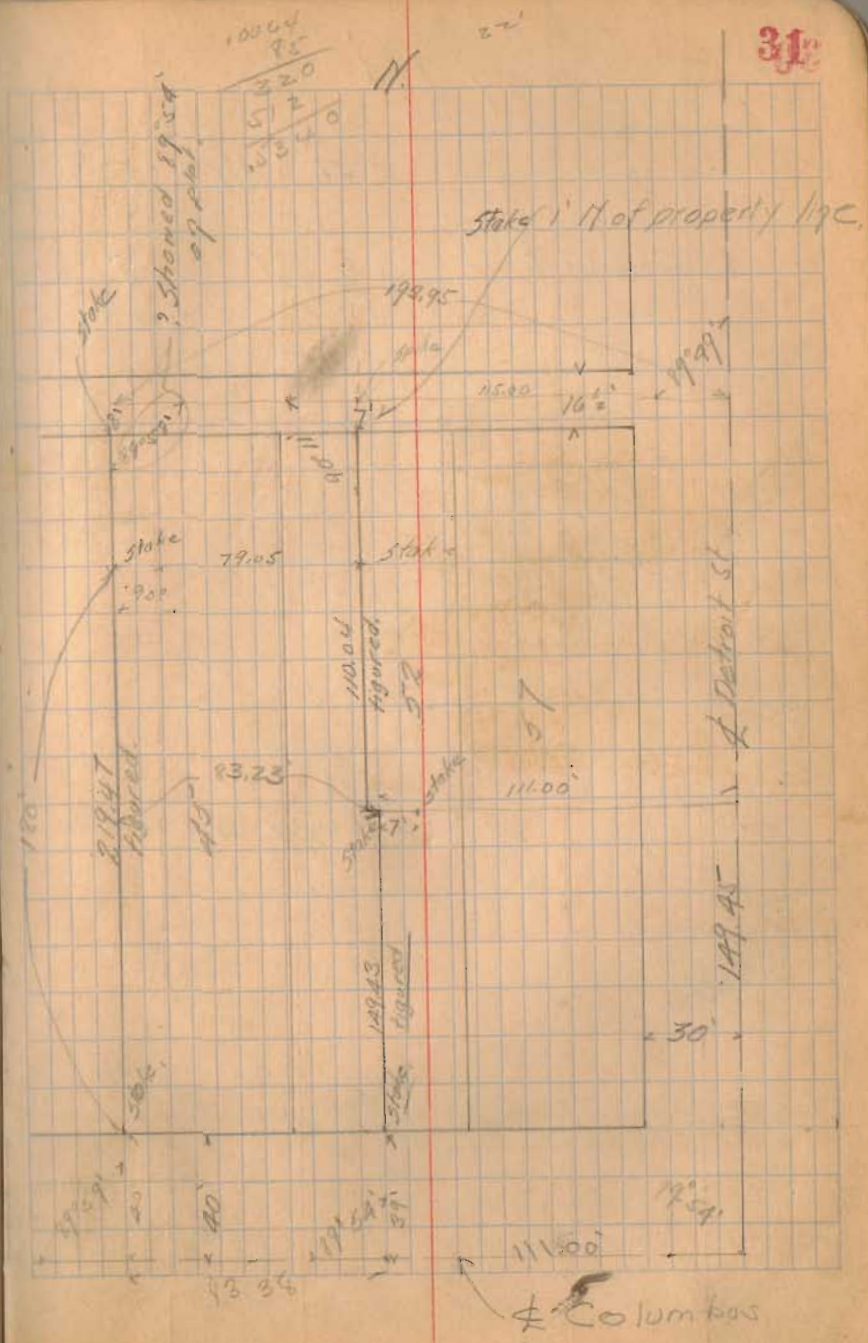
30  
165  
195  
1.05  
198.95  
115  
78.95

July 2, 1912

Set stake on west line 120' from stake at at SW corner

Set stake 4' S. of SW cor. and on west line

Measure east 79.05 at rt angle to west line from stake at 120' N. of sw. corner and set stake



Stake 11 of property 19c

149.45

11.00

30

11.00  
Columbus

56

Annat Building 8/2 1912

Stake A, B, D,  $\frac{3}{4}$  E set by Inskip

see page 31

stake at F gone, drove spike  
set stake at C 4' West and 4' South  
of S.E. Corner

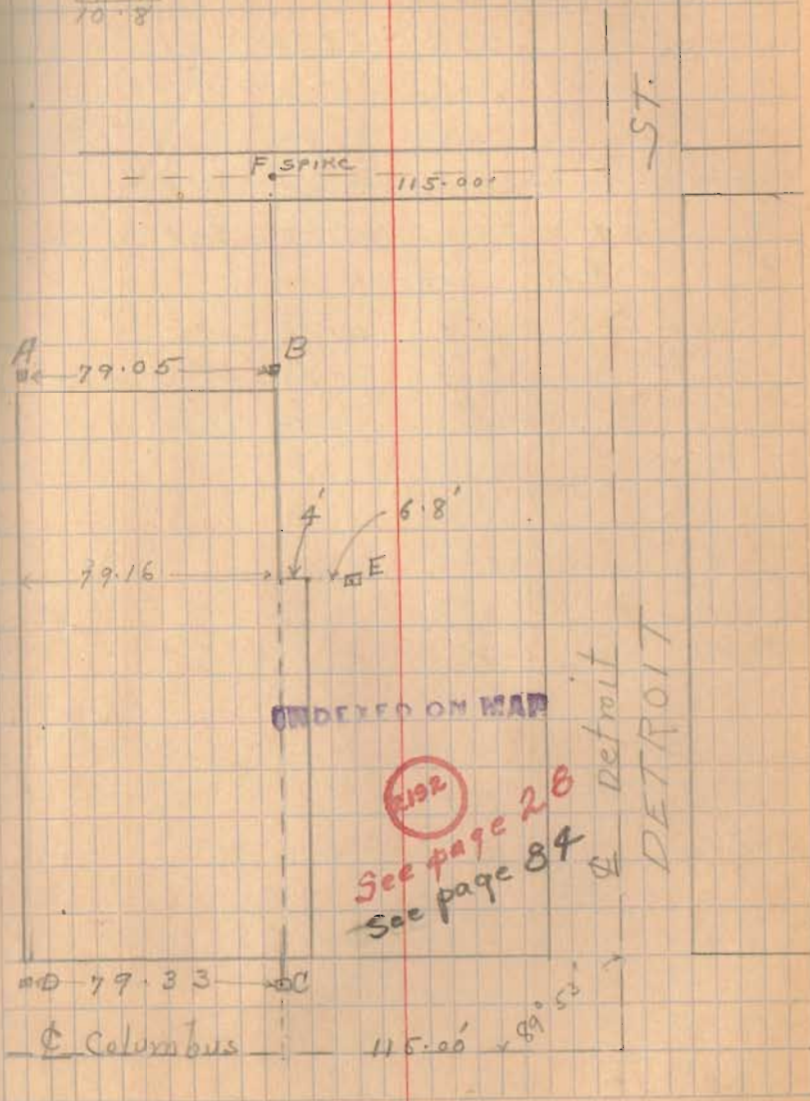
CD = 79.33

Stake E 6.8 East of E. end of 4' line  
Distances check as shown

89°-53'

C.M.R. S. McCoid O.C.R.

57

3.7  
 $\frac{7.1}{10.8}$ 

 **APPROVED**

**CITY OF BELLEFONTAINE**  
**PARKING LOT NO. 7**  
**REMAINDER SURVEY**

Being situated in the City of Bellefontaine, Township of Lake and County of Logan and being a part of Section 35, Town 4, Range 14 of the Between The Miami River's Survey and being part of Lots 52 and 57 of the original recorded plat of said City as recorded in Plat Cabinet A, Slide 1;

Beginning for reference at a 5/8" iron bar found (since replaced by a pk nail set) at the northeast corner of the City of Bellefontaine, Ohio's 0.082 acre tract (Part Lots 45 & 52) as is recorded in O.R. Vol. 550, Page 608, said iron bar also being at the northwest corner of said City's Part Lots 52 & 57 as is recorded in O.R. Vol. 1200, Page 941, said iron bar being in the south line of Watson Way, a 16.5' wide public alley and in the north line of Lot 52;

Thence with the east line of said City 0.082 acre tract and an east line of Peak of Ohio, Investments, LLC Tract One (Parts of Lots 45 & 52) as is recorded in O.R. 1234, Page 127, S. 0° 17' 20" E. 65.10 feet to a pk nail set at the true point of beginning of this description.

Thence through said City said part Lots 52 & 57 and S. 89° 03' 45" E. 85.02 feet to a pk nail set in the west right of way of N. Detroit Street and the east line of Lot 57;

Thence with said west right of way line and said east line of Lot 57 S. 0° 17' 20" E. 30.29 feet to where an iron pipe previously existed and where now a pk nail has been set.

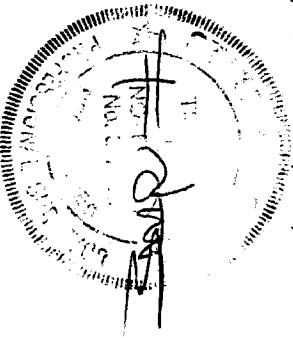
Thence with a north line of Peak of Ohio Investments, LLC Tract Two (part of Lots 52 & 57) recorded in O.R. 1234, Page 127, S. 89° 59' 43" W. 85.00 feet to a pk nail set;

Thence with the west line of said City Part Lots 52 & 57 and said Peak of Ohio Investments, LLC Tract One east line N. 0° 17' 20" W. (this bearing is assumed and all other bearings and distances are as were measured as a part of this survey) 31.69 feet to the place of beginning.

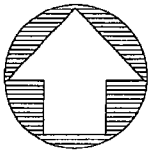
Containing 0.061 acres more or less and being out of said City of Bellefontaine, Ohio part of Lots 52 and 57.

Description prepared by Timothy L. Notestine, P.E., P.S. 7815 from a field survey on June 19, 2017.

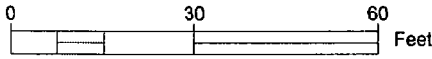
INDEXED ON MAP  
2192 2



10-5-17  
✓ **APPROVED**



**CITY OF BELLEFONTAINE  
PARKING LOT NO. 7  
REMAINDER SURVEY**



- ⊗ **PK NAIL SET**
- ⊗ **5/8" IRON BAR FOUND  
AND RESET WITH PK**
- ⊗ **IRON PIPE FOUND AND  
RESET WITH PK**

LOT #44

LOT #53

LOT #56

CITY OF BELLEFONTAINE  
MUNICIPAL BUILDING  
135 N. DETROIT ST.  
PART LOTS 37, 44, 53 & 56  
PARCEL #17-091-12-21-013-000

**WATSON WAY - 16.5'**

CITY OF BELLEFONTAINE  
PART LOTS 45 & 52  
O. R. 550, PG. 68  
0.082 ACRES  
PARCEL #17-091-12-21-007-001

S0° 17' 20"E 65.10'  
BASIS FOR BEARING

LOT #52

CITY OF BELLEFONTAINE  
(PARKING LOT 7)  
PART LOTS 52 & 57  
O. R. 1200, PG. 941  
0.191 ACRES  
PARCEL #  
17-091-12-21-012-000

LOT #57

PEAK OF OHIO INVESTMENTS, LLC  
PART LOTS 45, 52 & 57  
O.R. BOOK 1234, PG. 127  
PARCEL NO. 17-091-12-21-007  
TRACT ONE

N0° 17' 20"W 31.69'

S89° 03' 45"E 85.02'

0.061 AC.

S89° 59' 43"W 85.00'

PEAK OF OHIO INVESTMENTS, LLC TRACT TWO

N. DETROIT ST. - 60'  
S0° 17' 20"E

S0° 17' 20"E 30.29'

BELLEFONTAINE OHIO  
PROPERTIES, LTD.  
PART LOT 52 & 57  
O.R. 1186, PG. 526  
0.075 ACRES  
PARCEL #  
17-091-12-21-008-000

210

208

204

200

BELLEFONTAINE OHIO  
PROPERTIES, LTD.  
PART LOTS 52 & 57 C  
O. R. 1193, PG. 480  
0.091 ACRES  
PARCEL #  
17-091-12-21-009-000

BELLEFONTAINE OHIO  
PROPERTIES, LTD.  
PART LOT #57  
O. R. 1186, PG. 529  
0.050 ACRES  
PARCEL #  
17-091-12-21-010-000

STATE OF OHIO  
TIMOTHY L. NOTESTINE  
No. S-7815  
SURVEY PERFORMED BY TIMOTHY L. NOTESTINE, P.E., P.S.  
JUNE 19, 2017

INDEXED ON MAP  
2192 2