

Survey of lot 101 for
R.F. Ormand and Frank
Dunell

For note see book 117
page 54.

May 18 1912

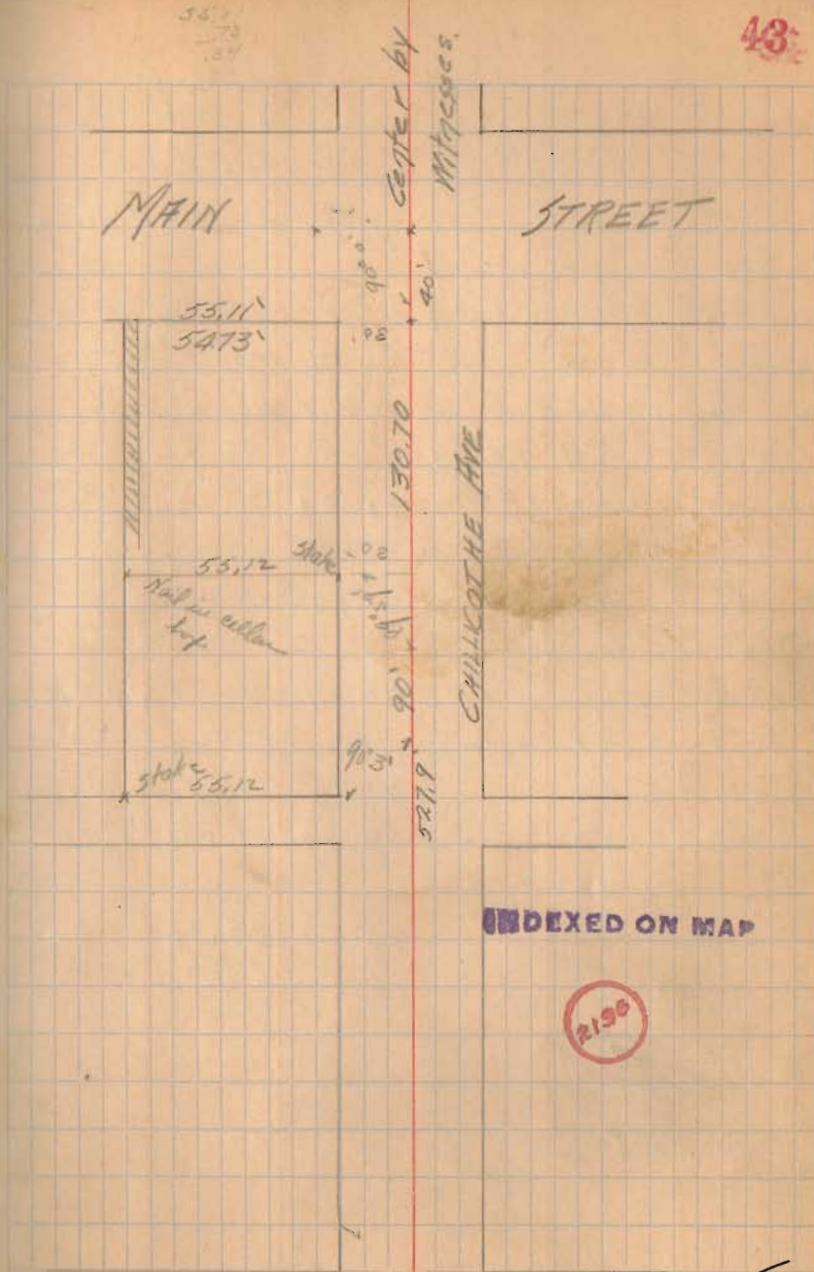
Distance Dels. to Chillicothe on
Main 527.39
526.56
1.83
Easement for lot 0.11
to the angle Main and Chillicothe
90° 0'

Distance Main to Detention
Chillicothe 527.9
Plat 526.5
Easement 1.4'
for lot 0.7

Distance S.E. cor lot 101 to corner
Dunell's Hdg 54.73'

BM
3.6
5.46
73.98
77.56
72.04

May 25 1912
S.E. cor lot



2196

INDEXED ON MAP