

SURVEY OF PT. LOT 238
 BELLEFONTAINE, OHIO
 OCTOBER 25, 1969
 SCALE 1" = 40'

DAN L. DODSON
 REG. SURVEYOR 4210
 BELLEFONTAINE, O
 F.B. 17/20

INDEXED ON MAP
 2212 1P

52

Linskeep No. 5

Survey of 110' ft. off north
end of lot 238 for John Dickerson

Found E. Columbus from stone at
Park and Mad River.

Set spikes in center of street
on approximate lot line.

Measure S. along fence
150' on each side and set stake
and lock.

Stakes are set on 55.3' apart.

These stakes not set for line
E. and W.

INDEXED ON MAP

2212 ZP1

C.A.

O.C.R. 9-24-14

53

Pt LOT 238
 BELLE FONTAINE, OHIO

FOR

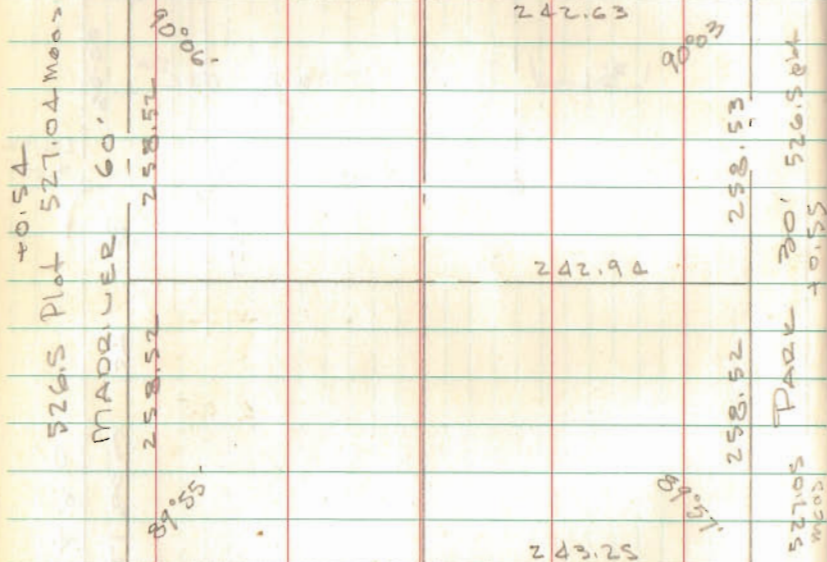
STANDARD OVERALL SERVICE

LOT to be Surfaced for
 parking lot.

North $\frac{1}{2}$ + 33' OFF S. $\frac{1}{2}$

501.50 Plot 500.26 Meas -1.24'

COLUMBUS 80



CHILLECOTHE 60'

Plot 501.50

Meas 501.50'

ABOVE BLOCK FROM

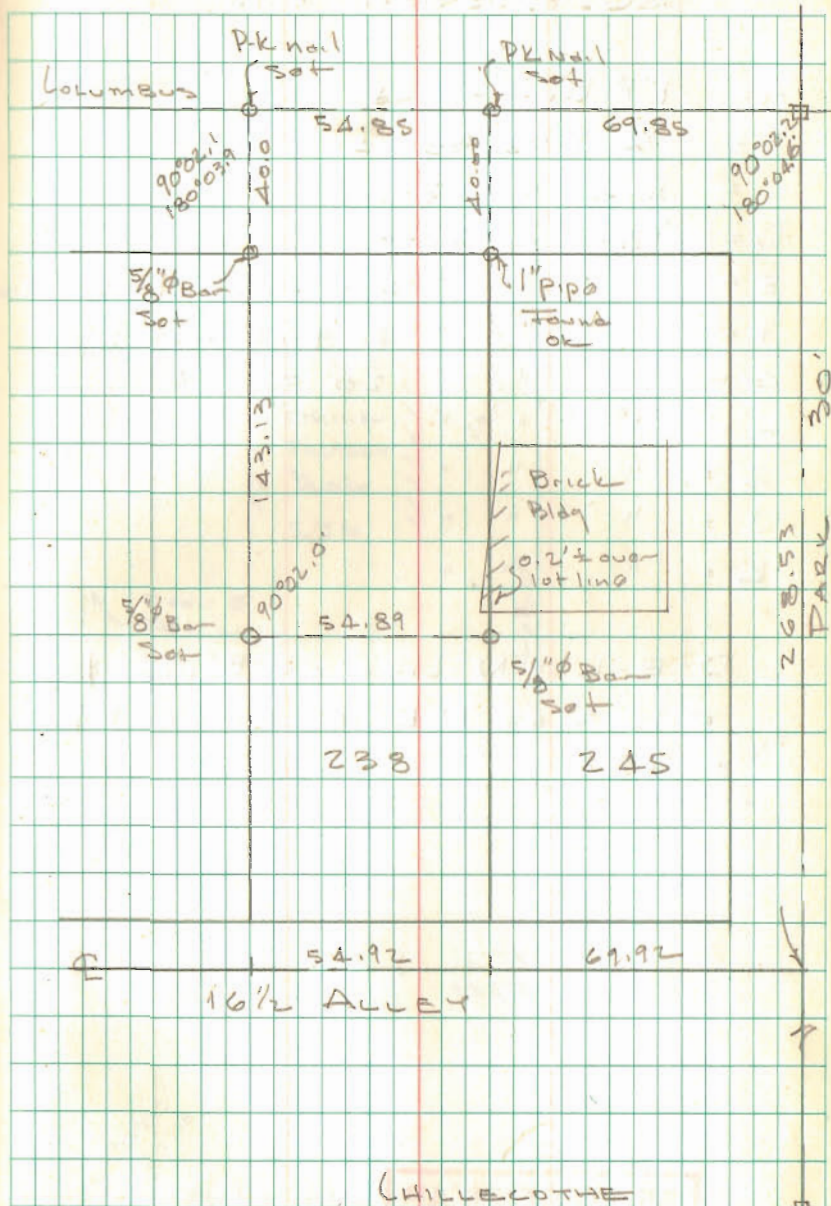
INSKEEP RECORDS

F.B. 5/52

INDEXED ON MAP
 2212

DOOBAN
 NICHOLS

10/25/69 20
 65°



238

245

54.92
 16 1/2 ALLEY

69.92

CHILLECOTHE

2212

Survey of 115 ft. off north
end of lot 238 for John Dickman

Found 2 Columbus firm stone at
Park and Main River.

Set spike in center of street
on approximate lot line

Quarries S along fence
150' on each side and set stake
and lock.

Stakes are set at 55.3' apart.

These stakes not set for line
E. and W.

INDEXED ON MAP

22/2

O.C.P. 9-24-14