

Received 9-15-88

MAP OFFICE

WEST WILLIAMS AVE. - 30'

IRON PIPE
FD.

88°50'

TROY ROAD

N

ALLEY

12'

ALLEY

WEST ST. - 50'

26.00' P.K. NAIL

70.00'

25.00' P.K. NAIL

Lot 2490

Lot 2487

10" ASH TREE
ON CORNER

● - 5/8" x 30" REBARS SET.

INDEXED ON MAP

2216 IP

DOLAN SURVEY
LOTS No. 2487-2490
CITY OF BELLEFONTAINE
LAKE TOWNSHIP
LOGAN COUNTY, OHIO
APRIL 11, 1988

SCALE: 1" = 40'

Daniel E. Gilbert
DANIEL E. GILBERT, P.S.
REG. SUR. No. 5402
400 N. PARK ST.
BELLEFONTAINE, OHIO
43311

088-013

50 66

Hamilton Cross Survey 4-2-15

Williams + West iron pin Hyd. S.W. 42.9

N.W. < 2nd frame house S.E. 45.9

Tel. pole N. of E. 50.82

Williams + Troy iron pin old cent. Mill. Ave
and 15' W. of E. side of Troy St.Hyd. S.W. 24.58 S.W. < 1st frame

house N.E. 45.28 S.E. < 1 1/2 "

" N.W. 42.4

West + Garfield iron pin

Hyd. N.E. 27.6 Elec. Et pole S.E. 31.

Water valve N.W. 28.45 " " " N.W. 37.2

N.E. < frame S.W. 32.7

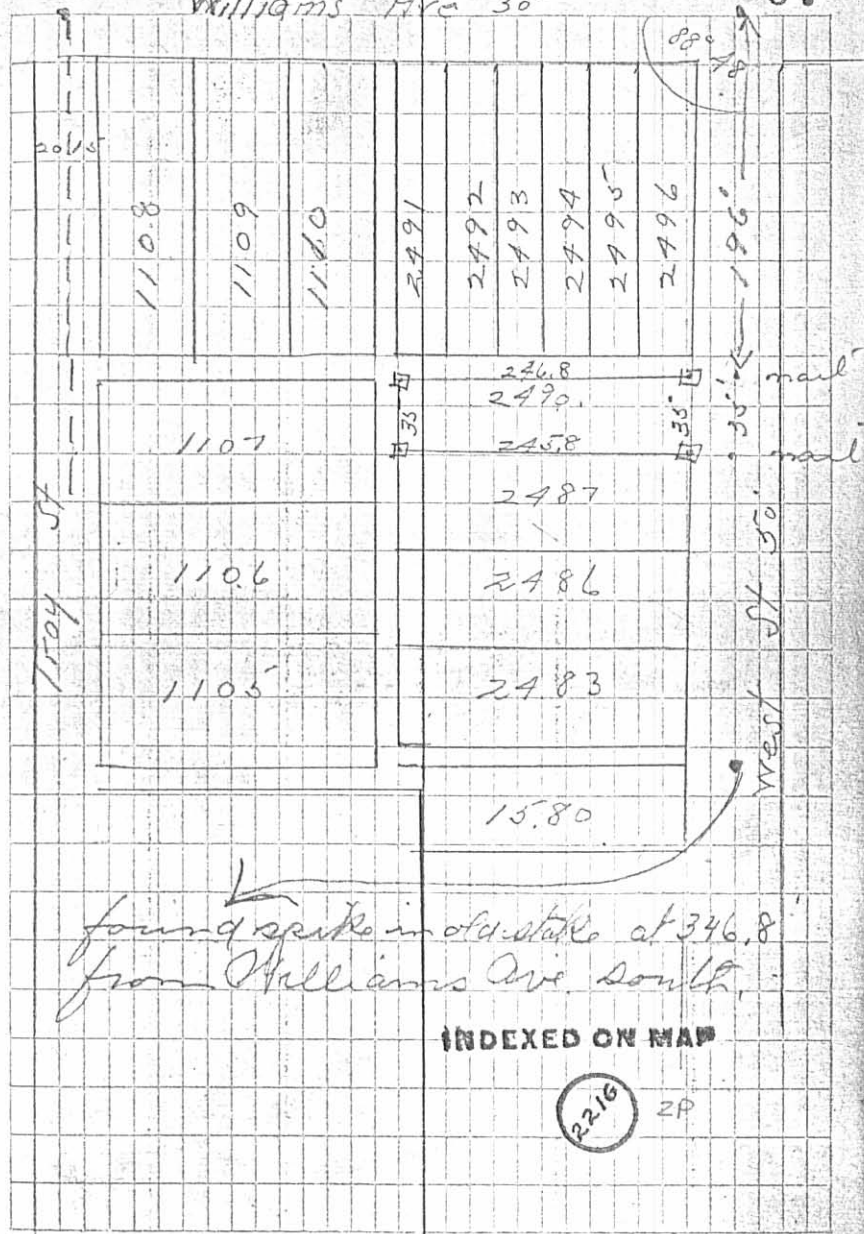
$$\begin{array}{r} 10 \\ 16 \\ 12 \\ 9 \\ 1 \end{array}$$

{ see city survey (994)
city book 274 page 75

$$\begin{array}{r} 105.7 \\ 35.7 \\ 40.7 \\ 14 \end{array}$$
O.P.R.
C.M.R.

67

Williams Ave 30'



566

Hamilton Cross Survey 4-2-15

Williams + West corner Hyd SW. 42.9
 N.W. & 1/2 sta game house S.E. 45.9
 Tel. pole N. of E. 50.82

Williams + Troy corner old cent Mill. Ave
 and is' N. of E. side of Troy St.

Hyd. S.W. 24.58 S.W. & 1/2 sta game
 house N.E. 45.28 S.E. & 1/2 " "
 " N.W. 42.4

West + Garfield corner
 Hyd N.E. 27.6 Elev. of pole S.E. 31.
 Water valve N.W. 28.45 " " " N.W. 37.2
 N.E. & house S.W. 32.7

10
16
12
9

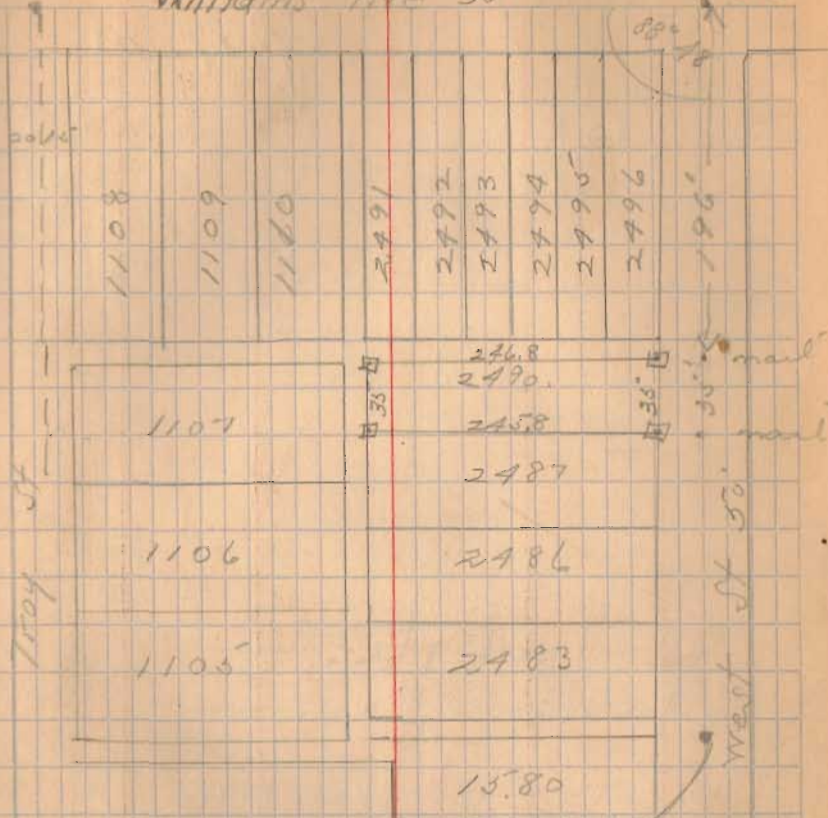
{ see city survey (994)
 city book 274 page 75

5.7
3.2
2.5

0.2 R
 0.19 R

Williams Ave 30'

67



INDEXED ON MAP

2216