

Survey of part of lot 51 from
A. Smith, - 7 this is to check
survey of O.C. Picking made 4-15

Bk 2 pg 16 Distance on Elm - Chillicothe to Chieli, 529.58
Plat 526.5
Excess 2/3.08
1.54

Bk 2 pg 28 Distance on Chillicothe - Elm to Det 500.5
Plat 501.5
Shortage 1.00
per lot .125

30
2.50
8.25
5.5
258.80

Distance on Chillicothe to Det & Elm 501.5

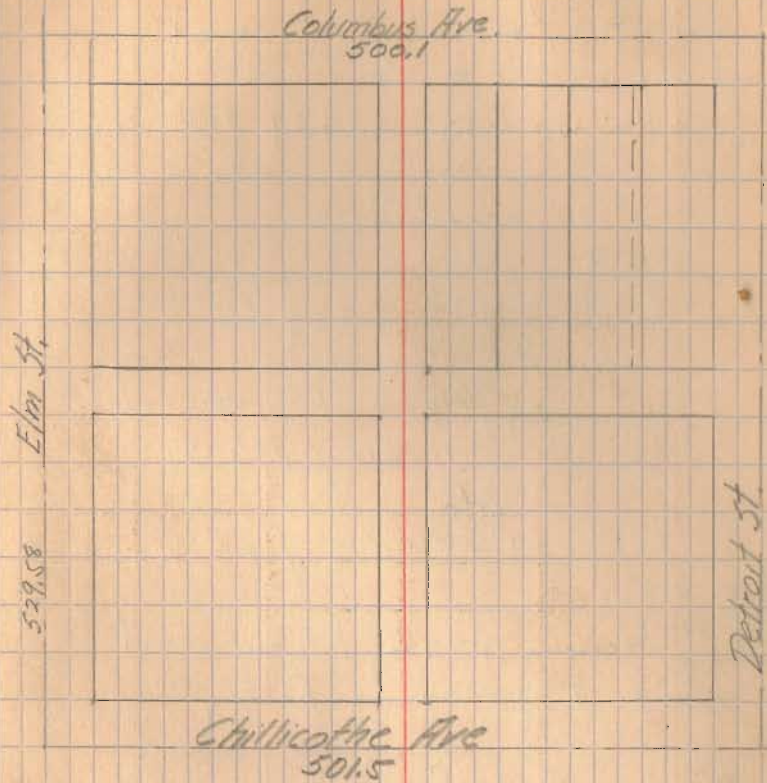
Distance Chillicothe to Chardet 527.6
Plat 526.5
Excess 1.1

Measured S. 269.79 on Elm from E of
Columbus for E of alley.

Measured N 258.4 on E Det from E Chillicothe
for E of alley.

40
220
8.25
1.54
269.79

C.A.I.
F. Spick 4-15-15



INDEXED ON MAP

2210

Set + Cols and set and
measure west on $\frac{1}{2}$ Colo. Ave

$30 + 55 + 10 - .13 = 94.87$ for
east line of Switzer $45 - .13 =$
 44.87 for first line

Stake at N.W. Cor 36.02 from $\frac{1}{2}$ Colo
N.E. 36.04

Measured 44.87 between these stakes
line in $\frac{1}{2}$ of alley between
Chick and Colp

From nail 94.05 from $\frac{1}{2}$
of Detroit

Measure 44.92 between nail
set on $\frac{1}{2}$ of alley by Richey

Buy $\frac{1}{2}$ falls about .04 S of
 $\frac{1}{2}$ of alley as shown by Richey

Measure 11.94 between back
in stake at 3 S. of lot line
by Richey

$$\begin{array}{r} 30 \\ 55 \\ 10 \\ \hline 95 \\ \hline 13 \\ \hline 94.87 \end{array}$$

Stake are set 5.27 N of $\frac{1}{2}$ in
east side and 5.25 " " " "

Set ^{up a west} nail at east line of Switzer
and $\frac{1}{2}$ of alley and mark point in
 $\frac{1}{2}$ of Colo