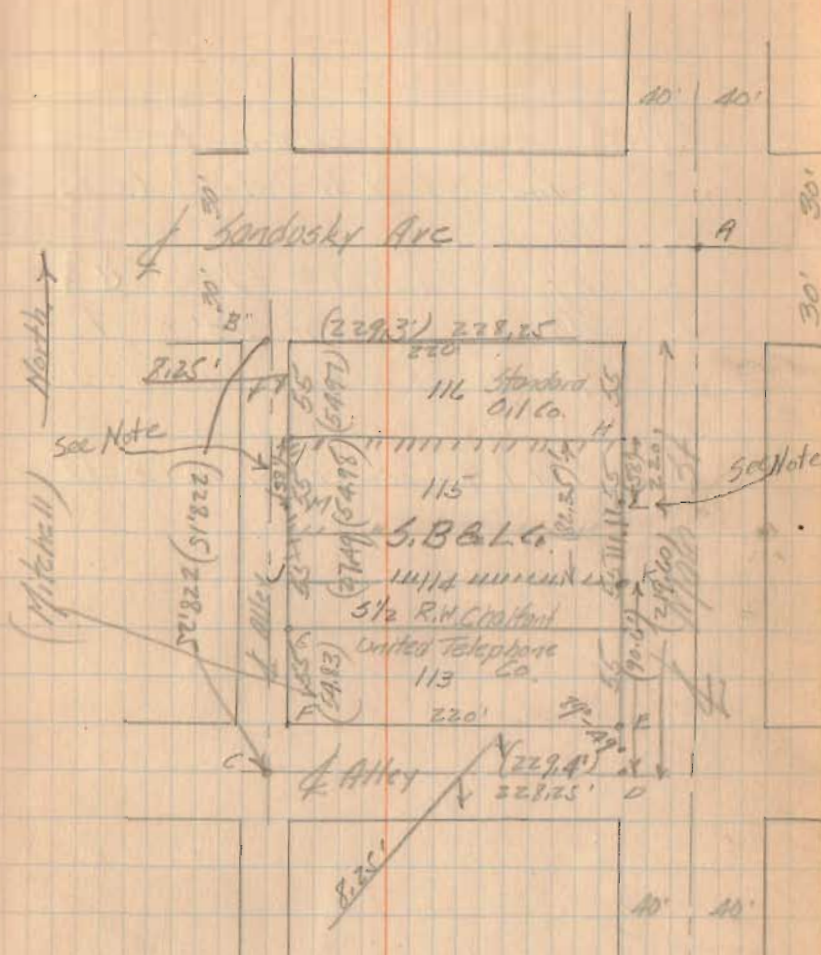


54 C.A. Inskoop 10/21/33  
 J.S. Crane  
 J.H. Inskoop  
 Survey of Lot 115 and  
 the north 1/2 of Lot 114 in  
 Sylvania, Ohio for the  
 Savings Building and Loan Co

- "A" Copper point set in asphalt from  
 T's on curb for E Main and E  
 Sandusky. (set)
- "B" City Engineer's Copper point at  
 S. line of Sandusky and E Alley (found)
- "C" City Engineer's copper point on  
 E's of alleys (found)
- "D" City Engineer's copper point at  
 N. line of Main St and E Alley (found)
- "E" City Engineer's copper point at  
 S.E. corner Lot 113 (found)
- "F" City Engineer's copper point at  
 S.W. corner Lot 113 (found)
- "G" City Engineer copper point at  
 N.W. corner Lot 113 (found)
- "H" T on curb set by J.S. Crane  
 for S.E. corner lot 116 (found)
- "I" T in concrete N.W. corner to  
 Lot 115 (set)



Plat distances thru 55  
 Measured " " (55)

2246

Note - see next page

- "J" + in concrete pavement at SW corner of  $1\frac{1}{2}$  Lot 114 (set)
- "K"  $\frac{3}{4}$ " iron pipe at S.E. corner  $1\frac{1}{2}$  Lot 114 (set)
- "L"  $\frac{3}{4}$ " iron pipe at 38' S. of N.E. corner of Lot 115 (set)
- "M" + in concrete pavement 38' S. of N.W. corner Lot 115 (set)

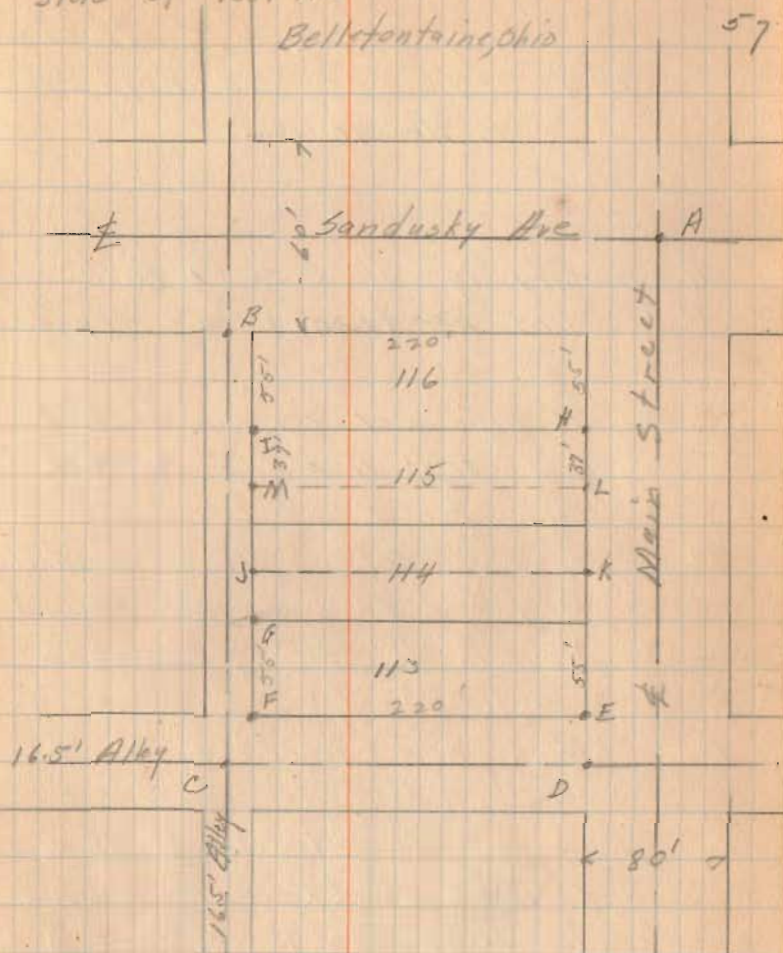
PIPE  
Bottom of iron post

Survey of 37' off the North side of Lot 115

E. K. Core  
C. N. Webster  
Dec. 6, 1934

Bellefontaine, Ohio

57



Note: - All points found and checked same as those on previous page - except "L" & "M".

"L" -  $\frac{3}{4}$ " pipe - pulled and replaced 37' S. of N.E. Cor. Lot 115. (Set)

"M" - New cross in concrete - 37' S. of N.W. cor Lot 115 - (Set)