

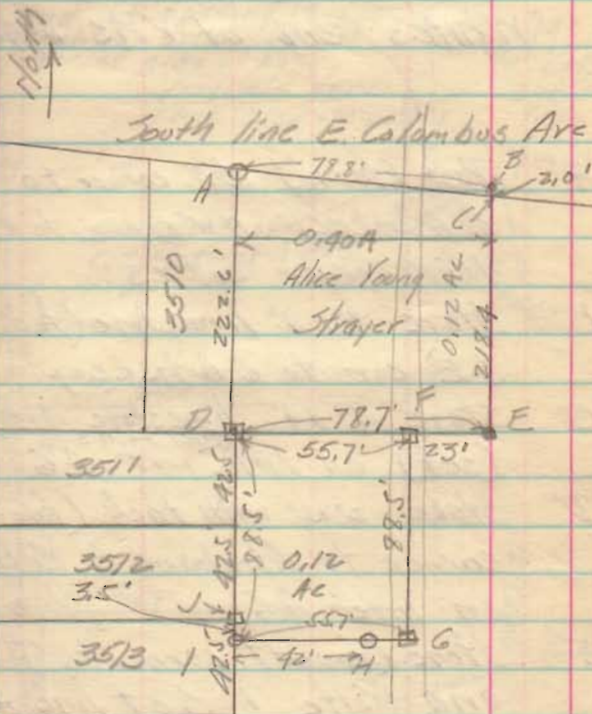
Part of VMS 4990  
 East of Hayes Street  
 South of Columbus Avenue  
 for Nathaniel Augustine

See Page 49 this book

- A Cast iron marker (found)  
 B Round hole (found) set pipe  
 See page 49  
 C Mark of concrete wall  
 D Old stake with tack (found)  
 E Iron pipe (found) See page 49  
 F Stake (set) & Creek 23' E. of E  
 G Stake (set) & Creek  
 H Iron pipe (set) 42' E of I  
 and 13.7' west of SE corner  
 N. Augustine  
 I Iron pipe set in west line  
 Lot 3513 - 3.5' S of NE corner  
 about 1' N of 24' wild cherry  
 J Old stake with tack (found)  
 NE corner Lot 3513

Clair A. Inskeep  
 Murray Joyce

11/5/35



DE - South line lot 3510  
~~produce~~ extended

INDEXED ON MAP

2205