

Mise Survey

Lake Township

May 1953

3.00 Acres

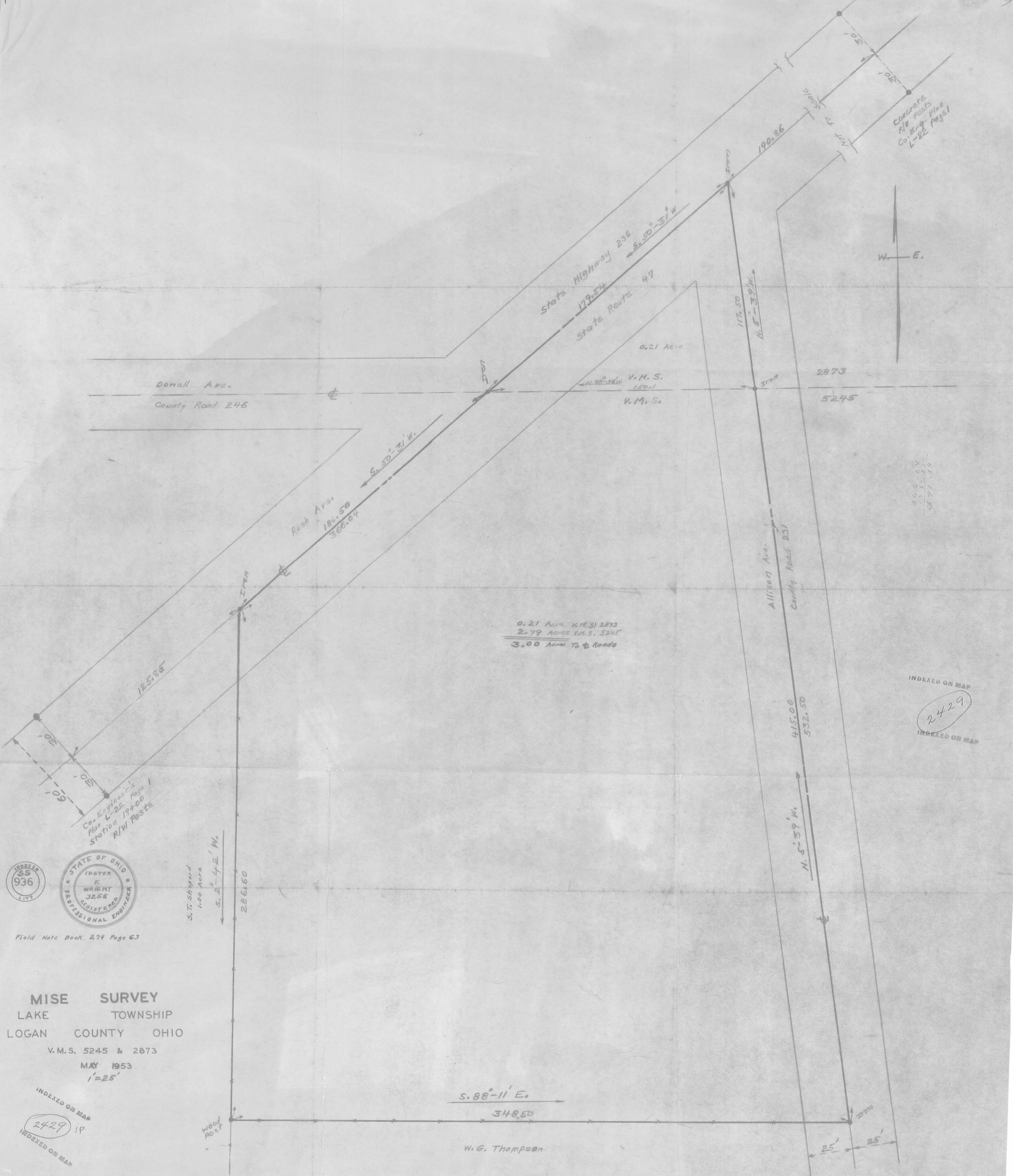
55 A

The following described land in Lake Township, Logan County Ohio and being in V.M.S. 5245 and V.M.S. 2873

Beginning at an iron in the center line of State Highway Number 236 (State Route Number 47) also known as Rush Ave. and in the center of Dowell Ave. (County Road Number 246) and said iron also being in the north line of V.M.S. 5245 and the south line of V.M.S. 2873 thence with the center line of Rush Ave. S. 50 - 31 W. 186.50 feet to an iron at the N.E. corner of S.T.Shepard's one acre tract thence with the east line of said Shepard land S. 2 - 42 W. 286.60 feet to a wood post thence with the north line of W.G.Thompson land S. 88 - 11 E. 348.50 feet to an iron in the center of Allison Ave. (County Road Number 231) thence with the center line of Allison Ave. N. 5 - 39 W. 532.50 feet to an iron in the center of Rush Ave. the last described line passing an iron in the north line of V.M.S. 5245 and the south line of V.M.S. 2873 at 415.00 feet thence with the center of Rush Ave. S. 50 - 31 W. 179.54 feet to the place of beginning said tract containing 0.21 of one acre in V.M.S. 2873 and 2.79 acres in V.M.S. 5245 making a total of 3.00 acres.

cc
E.K.Core,
Logan County Engineer.

INDEXED ON MAP
2429 1D



Concrete
R/W Posts
Co. Eng. Plan
L-22 Page 1

W — E

366.04
150.1
516.14

0.21 Acres V.M.S. 2873
2.79 Acres V.M.S. 5245
3.00 Acres To & Roads

INDEXED ON MAP
2429
INDEXED ON MAP



Field Note Book 274 Page 63

MISE SURVEY
LAKE TOWNSHIP
LOGAN COUNTY OHIO
V.M.S. 5245 & 2873
MAY 1953
1"=25'

INDEXED ON MAP
2429 IP
INDEXED ON MAP

S. 88°-11' E.
348.50

W. G. Thompson

Wood Post