

201

Corporation Line Extension Bellefontaine Rush - Allison
(Revised Aug. 31, 1959)

The following described land in Lake Township, Logan County, Ohio and being in V.M.S. 2873 and V.M.S. 5245

Beginning at an iron in the center line of Rush Ave. (State Route number 47) and in the center of Allison Road

Thence with the center of Allison Road S. 5 - 39 E. 777.60 feet to an iron at an angle in the present Corporation line (the center of Allison Road being the present Corporation Line) the last described line passing an iron in the north line of V.M.S. 5245 and the south side of V.M.S. 2873 at 117.50 feet

Thence with the present Corporation Line of Bellefontaine and also with the north side of Tracy Humble land S. 46 - 42 W. 501.00 feet to an iron the last described line also being the south line of Lawrence Garvin's 3.71 acre tract the last described line ~~at 117.50~~ passing an iron at the west side of Allison Road at 31.58 feet (being 25.00 feet from the center line when measured at right angles)

Thence S. 44 - 54 E. 7.70 feet to an iron at the N.E. corner of Lot Number 3601

Thence S. 41 - 29 W. 188.11 feet to an iron at the S.W. corner of Lot Number 3599 the last described line being along the north side of Lots 3601 - 3600 and 3599

Thence N. 51 - 23 W. 724.40 feet to an iron at the north side of Rush Ave. and in the present Corporation Line the last described line passing an iron in the center of Rush Ave at 694.40 feet and also passing an iron at the south side of Rush Ave. at 664.40 feet the last described line also being the east side of Lots 3564-3563-3562-3561-3560-3559-3558 and 3557

Thence with the north side of Rush Ave. N. 38 - 20 E. 190.32 feet to an iron the last described line being with the present Corporation Line

Thence again with the north line of Rush Ave. (Rush Ave. being 60 feet wide) N. 50 - 31 E. 451.94 feet to an iron ~~at 117.50~~ at an angle in the present Corporation Line the last described line being with the present Corporation Line

Thence again with the north line of Rush Ave. N. 50 - 31 E. 650.24 feet to an iron the last described line passing an iron in the center of Dowell Ave. (County Road Number 246) at 416.60 feet

Thence S. 5 - 39 E. 36.12 feet to the place of beginning

Said described tract containing a total of 15.83 acres 2.19 acres being in highways, 0.95 of one acre being in Lot Number 2473 and 12.69 acres being in land without highways. The above described land being shown on Bellefontaine, City Engineer's Print JJ - 115 - A.

cc
Logan County Engineer

INDEXED ON MAP
2514 1D

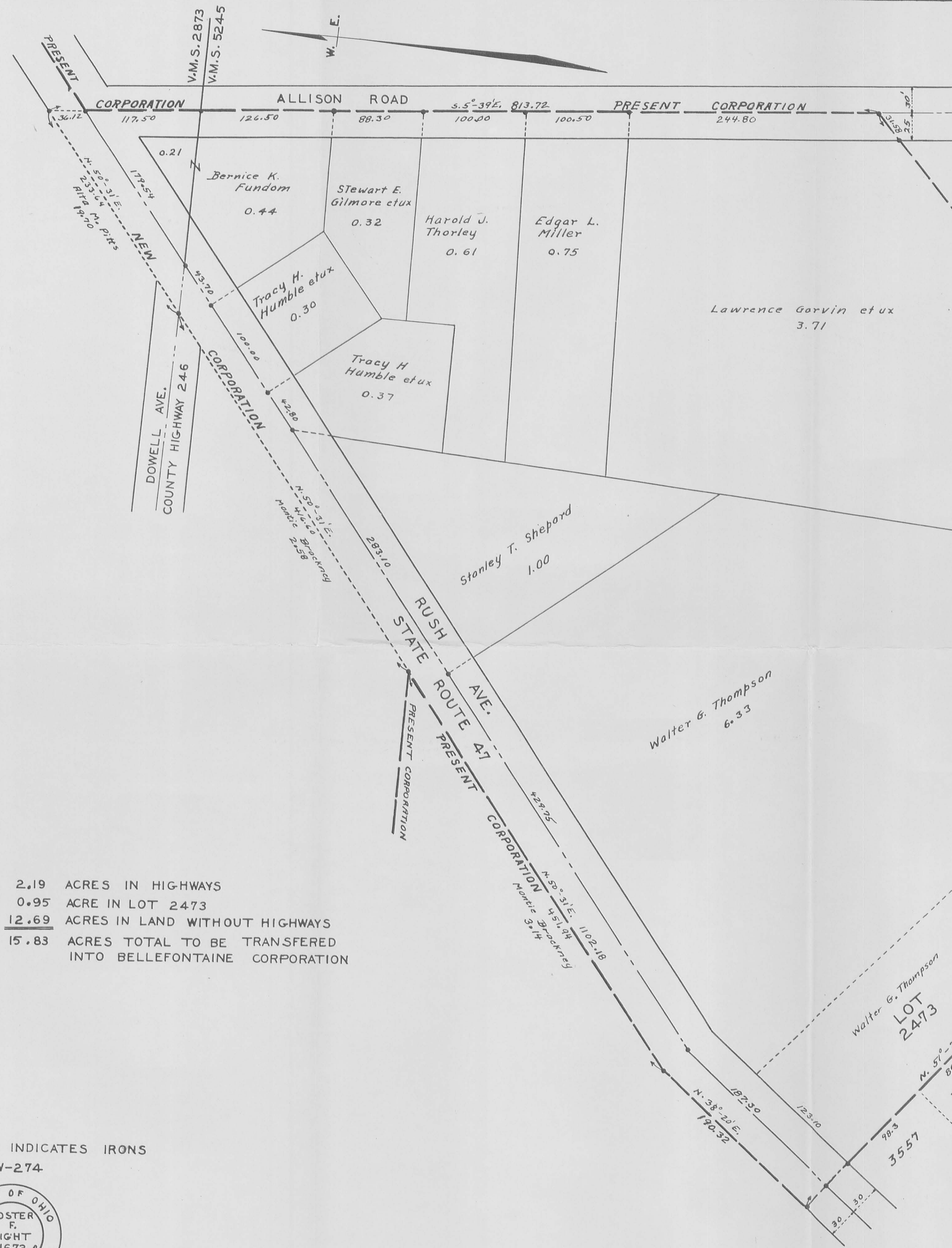
THIS TRACING TO BE FILED AT OFFICE OF BELLEFONTAINE CITY ENGINEER

● INDICATES IRONS
FW-274



JJ-115-A

2.19 ACRES IN HIGHWAYS
0.95 ACRE IN LOT 2473
12.69 ACRES IN LAND WITHOUT HIGHWAYS
15.83 ACRES TOTAL TO BE TRANSFERRED INTO BELLEFONTAINE CORPORATION



SURVEYOR'S CERTIFICATE

I hereby certify that the annexed Plat is a correct representation of the property to be annexed to the City of Bellefontaine Ohio

Foster F. Wright
Registered Surveyor No. 1673

ACCEPTANCE

The annexed Plat was approved and accepted by the Board of County Commissioners at a regular meeting 2nd day of November 1959 and recorded in Journal 1-0 pages 173, 174, 175 & 176

Charles Kennedy
Foster F. Wright
William Fox
Commissioners of Logan County

ACCEPTANCE

The annexed Plat was adopted by Ordinance No. 2705 as an addition to the City of Bellefontaine Ohio at a regular meeting of the City Council on the 8th day of February 1960

Mayor Janet Edggy
Clerk Paul E. Watkins

ACCEPTANCE

The annexed Plat was approved and accepted by the Planning Commission 15th day of December 1959

Charles R. Ruff
Chairman

ACCEPTANCE

The annexed Plat was approved and accepted by Bellefontaine City Engineer 15th day of December 1959

Paul C. Menzies
City Engineer

AUDITOR LOGAN COUNTY

Transferred this 10 day of February 1960

Charles H. Chamberlain
Auditor Logan County

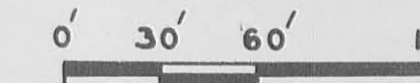
RECORDER LOGAN COUNTY

Received for Record 10:20 o'clock Feb. 10th 1960
Recorded in Plat Book 4 Volume D Page 67

Jessie L. Staley
Recorder Logan County

CORPORATION LINE EXTENSION
BELLEFONTAINE OHIO

LAKE TOWNSHIP LOGAN COUNTY
V.M.S. 5245 V.M.S. 2873
AUGUST 1959 SCALE 1"=60'



2514
INDEXED ON MAP

JJ-115-A