

COLUMBUS ST. 60'

30'

SIDEWALK

Pipe Set  
@ S. edge of  
Conc. Walk

45.02'

10.00'

55.02'

90°-12'

0 = 3/4" Pipe Set  
SCALE 1" = 30'

10'

150.13'

761

760

150.13'

Pipe Set  
2.00' South  
of Lot Corner

45.02'

10.00'

55.02'

90°-12'

16' ALLEY



SURVEY OF LOT 760 AND 761  
McBETHS ADDITION TO BELLEFONTAINE, OHIO  
PLAT BOOK A VOL. 2 PAGE 13  
JUNE 30, 1961

Surveyed By Dan L. Dodson

Dan L. Dodson  
Registered Surveyor  
No. 4270

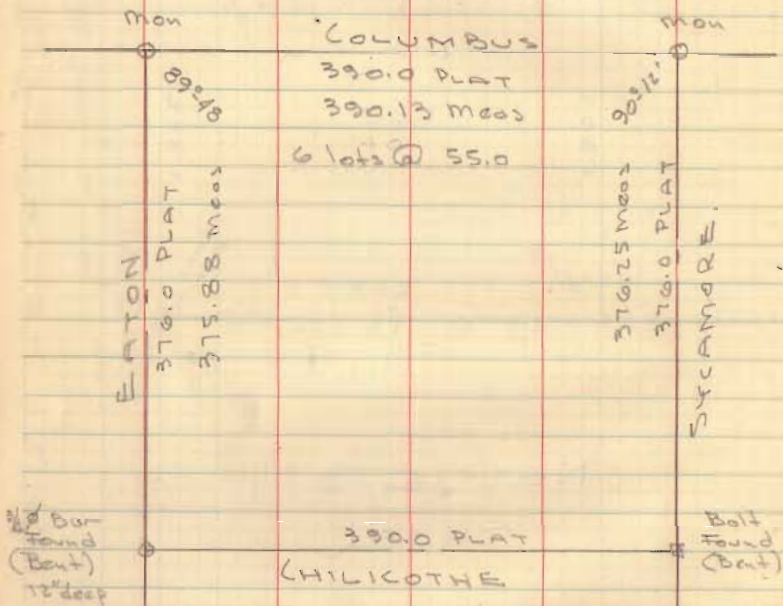
2716 IP

INDEXED ON MAP

LOT 760-761  
W. COLUMBUS ST.

Mc Beths ADD.  
BELLEFONTAINE, O

PLAT BK A VOL. 2 PG 13



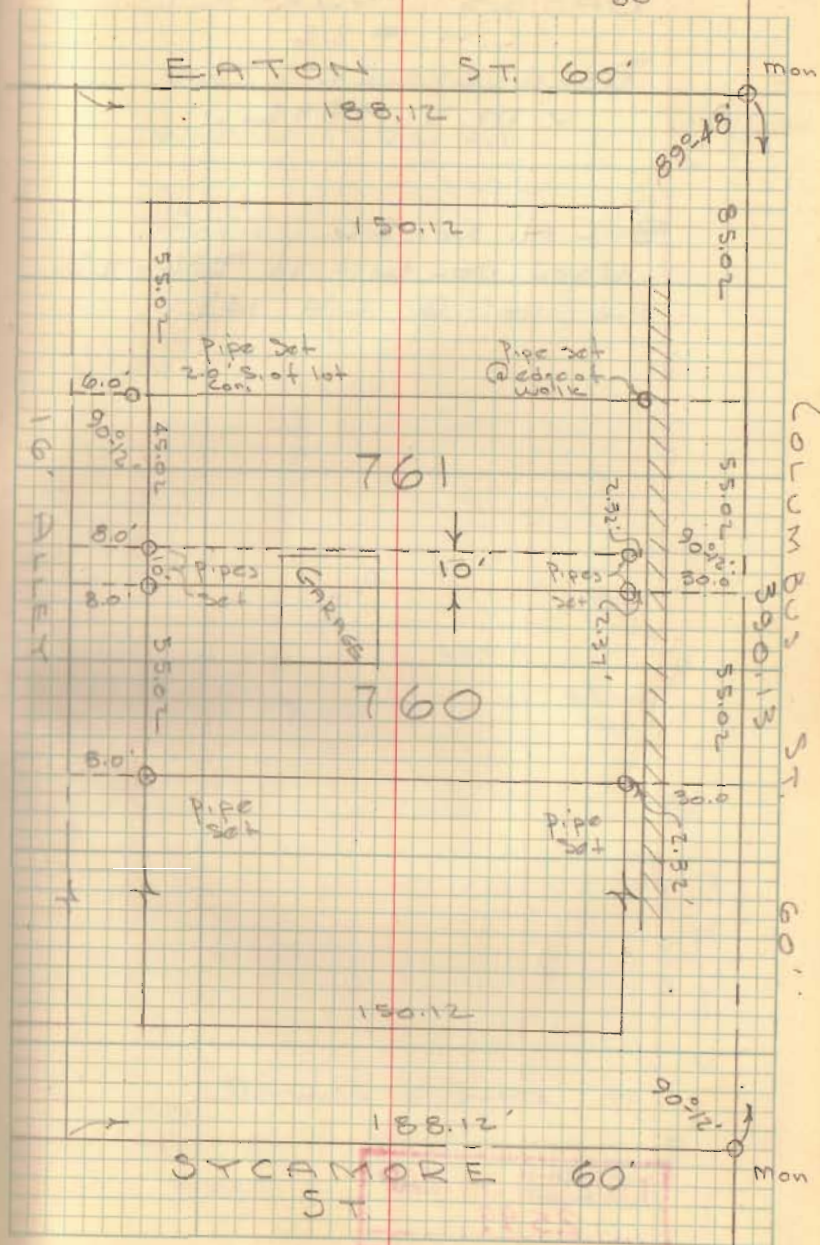
N.W & S.W. cor. lot 761  
Come on conc. fdy. for steel  
60. post, set pipes as indicated

INDEXED ON MAP  
2716

Dodson  
Gilbert

June 27, 1961  
80°

4





Lot 760-761  
W. Columbus St. - Bellefontaine

Columbus St.

390.0 plot

6 @ 55.0'

390.0  
190.25

Eaton St.  
376.0 plot  
L @ 150.0

Sycamore St.  
376.0 plot

Chillicothe St.

390.0 plot

| ON          | From        | To          | Plot  | meas    | #         |
|-------------|-------------|-------------|-------|---------|-----------|
| Columbus    | Eaton       | Sycamore    | 390.0 | 390.13  |           |
| Eaton       | Columbus    | Chillicothe | 376.0 | 375.88  | Iron Post |
| Chillicothe | Eaton       | Sycamore    | 390.0 |         |           |
| Sycamore    | Chillicothe | Columbus    | 376.0 | 376.25' |           |

85.02

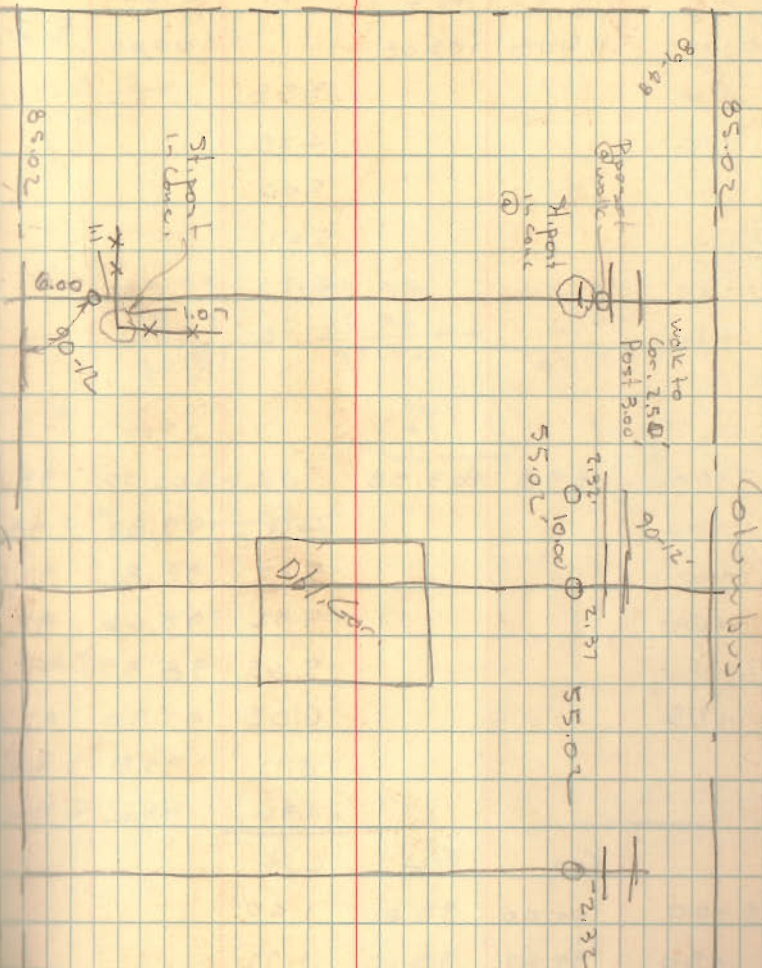
200.00 140.04

188.12

11.88 195.06

(3827 WF)

30



BL 4/4

INDEXED ON MAP

2716