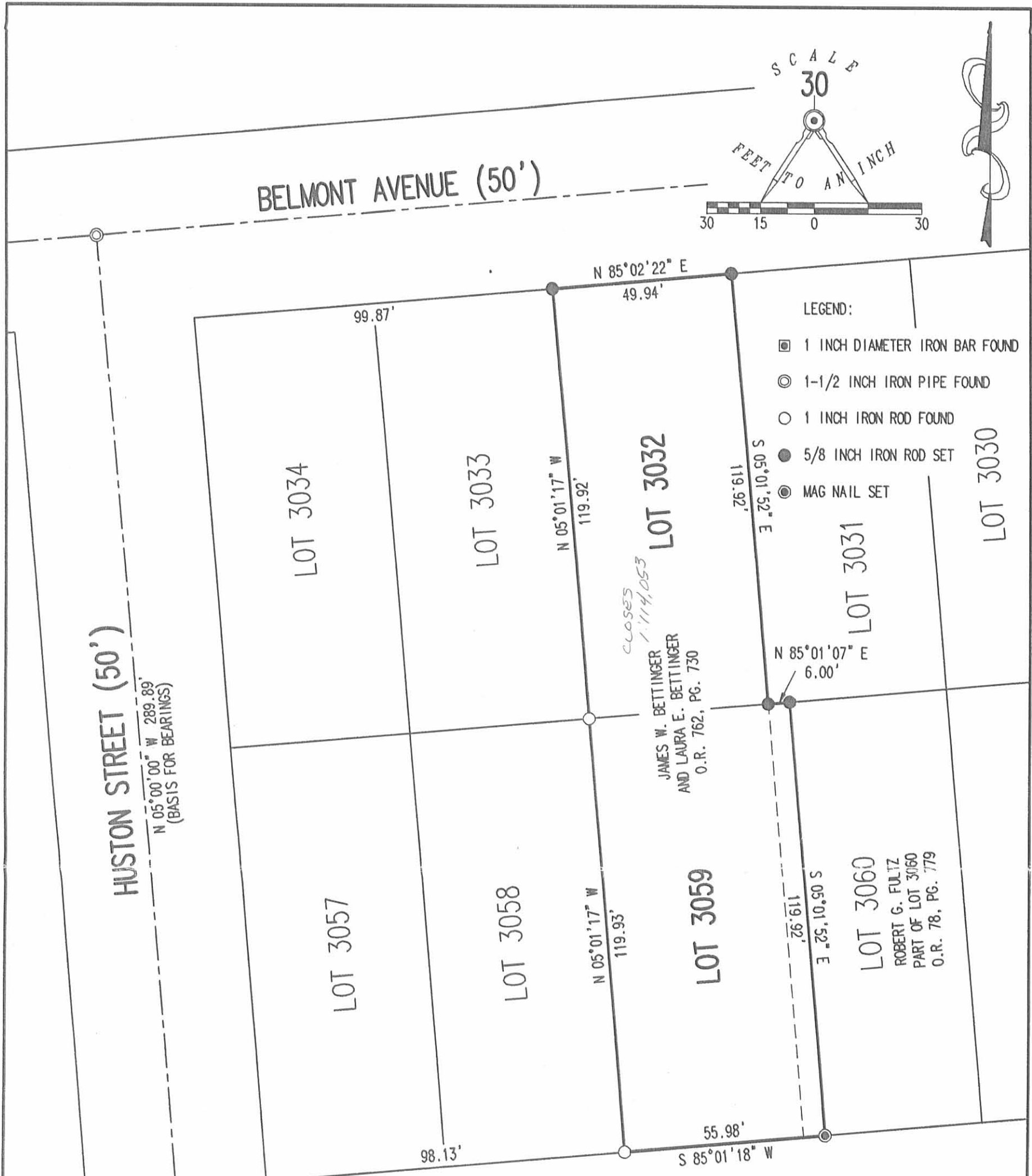


REC'D 3-21-05 SM OK



RETRACEMENT SURVEY OF THE  
 JAMES W. BETTINGER  
 AND LAURA E. BETTINGER  
 LOTS 3032, 3059 AND PART OF LOT 3060  
 BELMONT ADDITION  
 PLAT CABINET A, SLIDE 40  
 OFFICIAL RECORD 762, PAGE 730  
 CITY OF BELLEFONTAINE  
 LAKE TOWNSHIP  
 LOGAN COUNTY, OHIO

SURVEYED BY:

*[Signature]*  
 JEFFREY I. LEE  
 PROFESSIONAL SURVEYOR 6359  
 MARCH 18, 2005



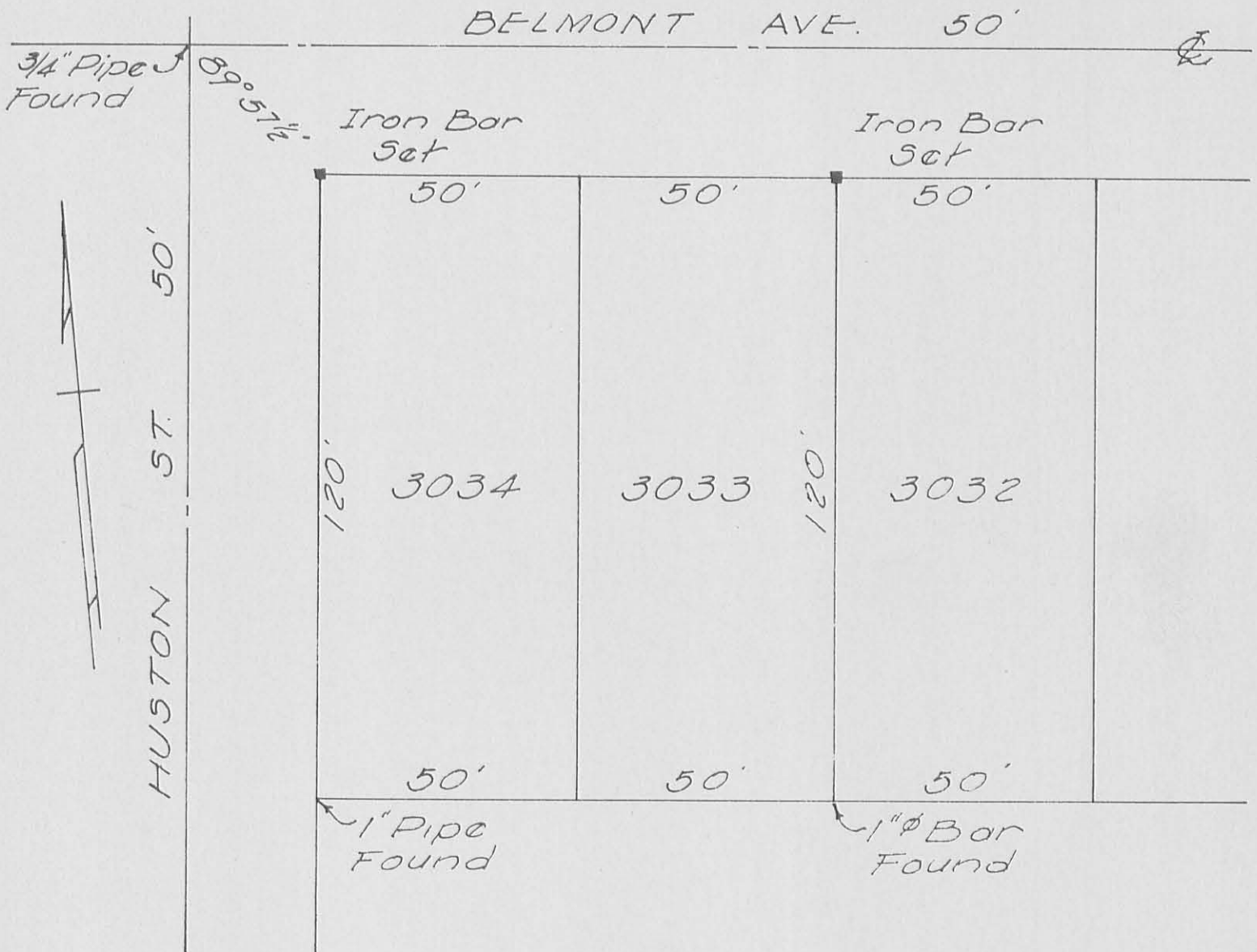
ORIGINAL STAMP IN GREEN

COPYRIGHT 2005 BY:  
 LEE SURVEYING & MAPPING CO., INC.  
 117 North Madriver Street  
 BELLEFONTAINE, OHIO 43311  
 (937) 593-7335

2 WORKING DAYS  
**BEFORE YOU DIG**  
 CALL TOLL FREE **800-362-2764**  
 OHIO UTILITIES PROTECTION SERVICE.

INDEXED ON MAP  
 3493 IP

KSR D0305 3994035 L-3994-3



REFERENCE:  
 BELMONT ADDITION  
 PLAT BK. B, VOL. 2, PG. 40

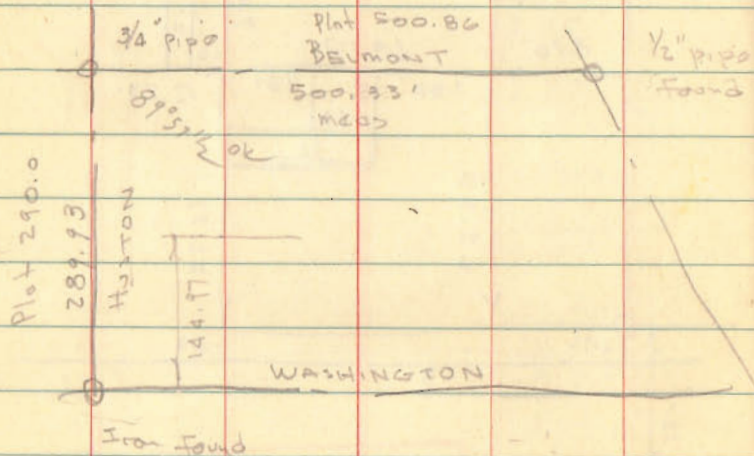
SURVEY OF LOT 3034-3033  
 BELLEFONTAINE, OHIO  
 OCTOBER 20, 1962  
 SCALE 1"=30'

*Dan L. Dodson*

Dan L. Dodson  
 Registered Surveyor 4270  
 Bellefontaine, Ohio

3493 2P

INDEXED ON MAP



INDEXED ON MAP  
3493

