

Received 4-28-89

OK 5-1-89 C.L.

Lee Surveying and Mapping Co.



Farm Surveys • Lot Surveys • Topography • Subdivisions • Construction Layout

855 EAST SANDUSKY AVENUE
BELLEFONTAINE, OHIO 43311

(513) 593-5780

CLAYTON M. LEE, P.S.
JEFFREY I. LEE, P.S.

PAUL WAMMES (TRACT I)

Lying in the City of Bellefontaine, Section 34, T-4, R-14, Lake Township, Logan County, Ohio.

Being a part of that 5.90 acres lying in the name of Paul Wammes as deeded and described in Volume 352, Page 319 of the Logan County Records of Deeds and being more particularly described as follows:

Beginning at a 5/8" iron rod set on the north line of Water Avenue, marking the southwest corner of the Drumm 1.20 acres (O.R. 67, Page 992) and being a distance of 422.01 feet, easterly, with said north street line from the east line of City Lot No. 1081.

THENCE, with said north line of Water Avenue, N 84°-53'-25" W, a distance of 47.01 feet to a 5/8" iron rod set at the southeast corner of the Wammes 1.00 acre tract (Volume 352, Page 319, Tract II).

THENCE, with the east line and the east line extended of said 1.00 acre tract, N 5°-57'-23" E, a distance of 219.61 feet to a 5/8" iron rod (set).

THENCE, N 49°-58'-32" W, a distance of 72.53 feet to a 1/2" square bar found at the southeast corner of the Ritter 4 acre tract (Volume 386, Page 380).

THENCE, with the boundary of the said Ritter 4 acre tract, the following 6 bearings and distances:

N 0°-40'-35" E, 188.85 feet to a 1/2" square bar (found)

S 89°-19'-25" E, 111.70 feet to a 5/8" iron rod (set).

N 5°-23'-56" E, 351.90 feet to a 1/2" square bar (found).

N 60°-07'-56" E, 94.50 feet to a 5/8" iron rod (set).

N 2°-41'-56" E, 55.10 feet to a 5/8" iron rod (set).

S 87°-17'-29" E, 66.00 feet to the west side of a 4" steel post found on the west right-of-way line of the C.C.C. & St. L. Railroad.

THENCE, with the said right-of-way line on a curve to the right having a radius of 8637.4 feet; a central angle of 14°; a length of 652.27 feet; the chord of which bears S 3°-57' W, a distance of 650.65 feet, to a 5/8" iron rod found at the northeast corner of the aforementioned 1.20 acres.

THENCE, with the boundary of the said 1.20 acres, the following 3 bearings and distances:

N 81°-45'-16" W, 136.00 feet to a 5/8" iron rod (found).

S 8°-57'-26" W, 204.40 feet to a 5/8" iron rod (found).

S 5°-07'-25" W, 74.88 feet to the point of beginning.

Containing 3.047 acres.

This description prepared from an actual field survey.

Basis for bearings: North line of Water Avenue = N 84°-53'-25" W.

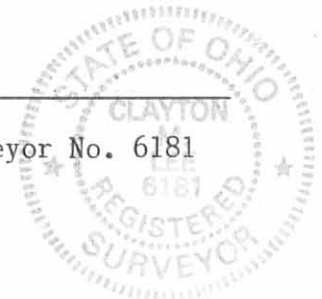
Prepared by:

Clayton M. Lee

Clayton M. Lee

Registered Professional Surveyor No. 6181

April 26, 1989



INDEXED ON MAP
3576 D-1

ORIGINAL STAMP

L-901

Lee Surveying and Mapping Co.



Farm Surveys • Lot Surveys • Topography • Subdivisions • Construction Layout

855 EAST SANDUSKY AVENUE
BELLEFONTAINE, OHIO 43311

(513) 593-5780

CLAYTON M. LEE, P.S.
JEFFREY I. LEE, P.S.

PAUL WAMMES (TRACT II)

Lying in the City of Bellefontaine, Section 34, T-4, R-14, Lake Township, Logan County, Ohio.

Being a part of that 5.90 acres lying in the name of Paul Wammes as deeded and described in Volume 352, Page 319 of the Logan County Records of Deeds and being more particularly described as follows:

Beginning at a 5/8" iron rod set on the southwest corner of the said 5.90 acres and also being on the north line of Water Avenue and also being on the east line of City Lot No. 1081.

THENCE, with the east line of said Lot No. 1081 and the east line of the Kistner 2.70 acre tract (Volume 373, Page 333) and also being the west line of said 5.90 acres, N 5°-57'-23" E, a distance of 435.68 feet to a 4" steel fence post found on the southwest corner of the Ritter 4 acre tract (Volume 386, Page 380).

THENCE, with the line between the said 5.90 acres and the said 4.00 acres, the following 3 bearings and distances:

S 59°-38'-20" E, 29.89 feet to a 4" steel fence post (found).

S 83°-05'-38" E, 56.05 feet to a 4" steel fence post (found).

S 49°-58'-32" E, 352.13 feet to a 5/8" iron rod (set), passing through a 1/2" square bar found at the southeast corner of said 4 acres.

THENCE, with the east line and the east line projected of a 1.00 acre tract, (Volume 352, Page 319), S 5°-57'-23" W, a distance of 219.61 feet to a 5/8" iron rod set on the north line of Water Avenue.

THENCE, with said north street line, N 84°-53'-25" W, a distance of 375.00 feet to the point of beginning.

Containing 2.957 acres, which includes all of Tract II (1.00 acre) and 1.957 acres out of Tract I (Volume 352, Page 319).

This description prepared from an actual field survey.

Basis for bearings: North line of Water Avenue = N 84°-53'-25" W.

Prepared by:

Clayton M. Lee

Clayton M. Lee

Registered Professional Surveyor No. 6181

April 26, 1989



INDEXED ON MAP
3576 1D2

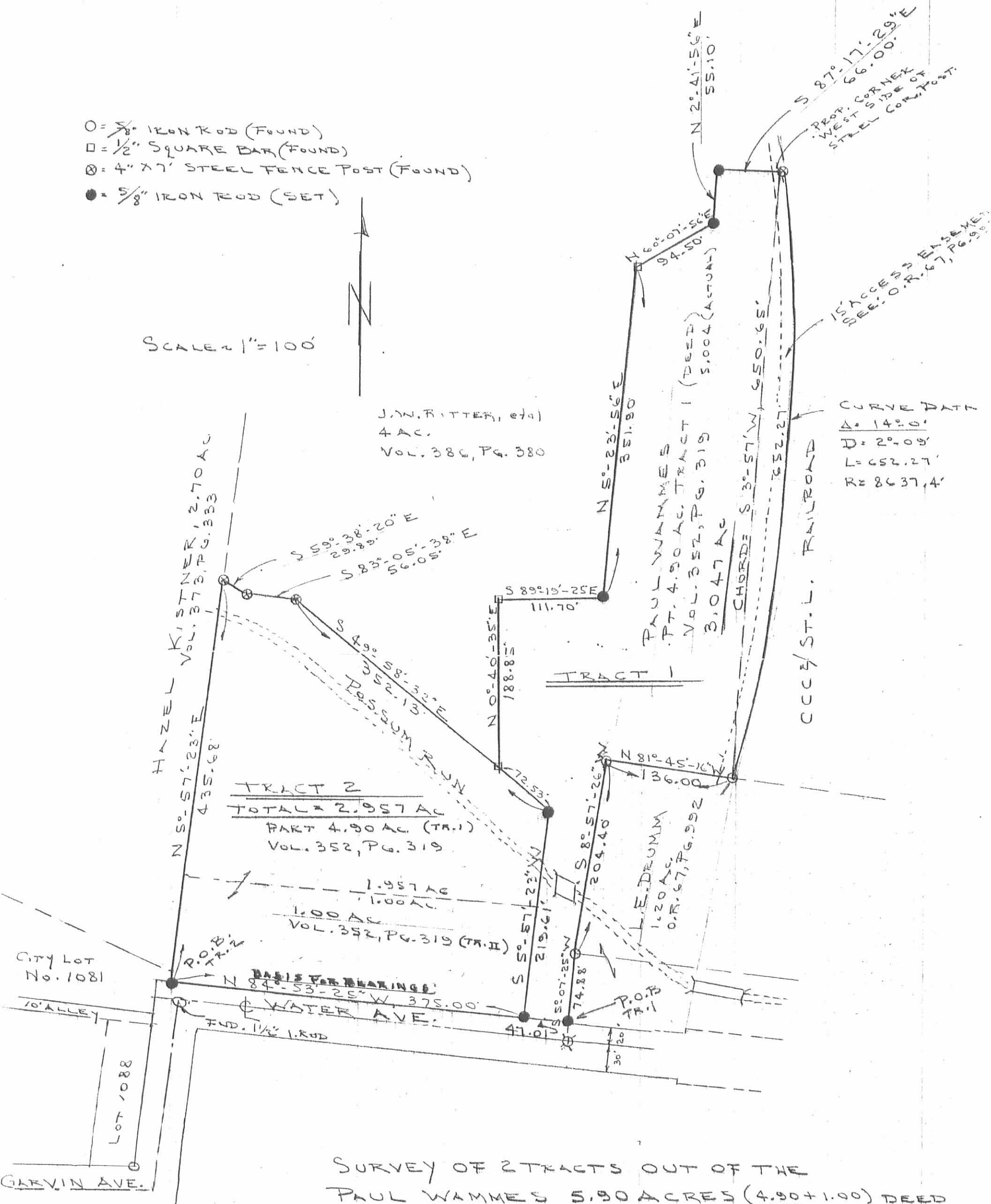
ORIGINAL STAMP IN GREEN

- = 5/8" IRON ROD (FOUND)
- = 1/2" SQUARE BAR (FOUND)
- ⊗ = 4" X 7" STEEL FENCE POST (FOUND)
- = 5/8" IRON ROD (SET)

SCALE 1" = 100'



J.W. RITTER, et al
4 AC.
VOL. 380, PG. 380



SURVEY OF 2 TRACTS OUT OF THE
PAUL WAMMES 5.90 ACRES (4.90 + 1.00) DEED
WATER AVENUE (5.004) ACTUAL
CITY OF BELLEFONTAINE, SEC. 34, T-4, R-14
LAKE TWP, LOGAN COUNTY, OHIO

By: Clayton M. Lee
CLAYTON M. LEE
REG. SURVEYOR 6181
APRIL 25, 1989

INDEXED ON MAP
5576 1P

RITTER SURVEY
Sec. 34 T-4 R-14
Bellefontaine, Ohio

September 4, 1963

The following described real estate situated in the City of Bellefontaine, Lake Township, Logan County, Ohio and being part of Section 34, Town 4, Range 14 of the Between the Miami Rivers Survey and more particularly described as follows:

Beginning at a steel fence post at the northeast corner of Thomas Pendleton's 2.70 acre tract and in the south right of way line of the C.C.C. and St. L. Railroad; thence with said right of way line, being a curve to the left, a chord, bearing N. 38°39' E. 776.0 feet to steel fence post; thence with the west right of way line of said railroad S. 16°44' E. 245.3 feet to a steel post; thence S. 87°58' W. 66.0 feet; thence S. 2°02' E. 55.1 feet; thence S. 55°24' W. 94.5 feet to an iron bar; thence S. 0°40' W. 351.9 feet to an iron bar; thence S. 85°59' W. ^{111.7}~~11.7~~ feet to an iron bar; thence S. 4°01' E. 188.9 feet to an iron bar; thence N. 54°41' W. 279.6 feet to a steel fence post; thence N. 87°55' W. 56.10 feet to a steel post; thence N. 65°11' W. 29.9 feet to a steel fence post in the ^{East} west line of said Pendleton tract; thence North, 111.8 feet to the place of beginning.

Containing ~~4.60~~ acres more or less.

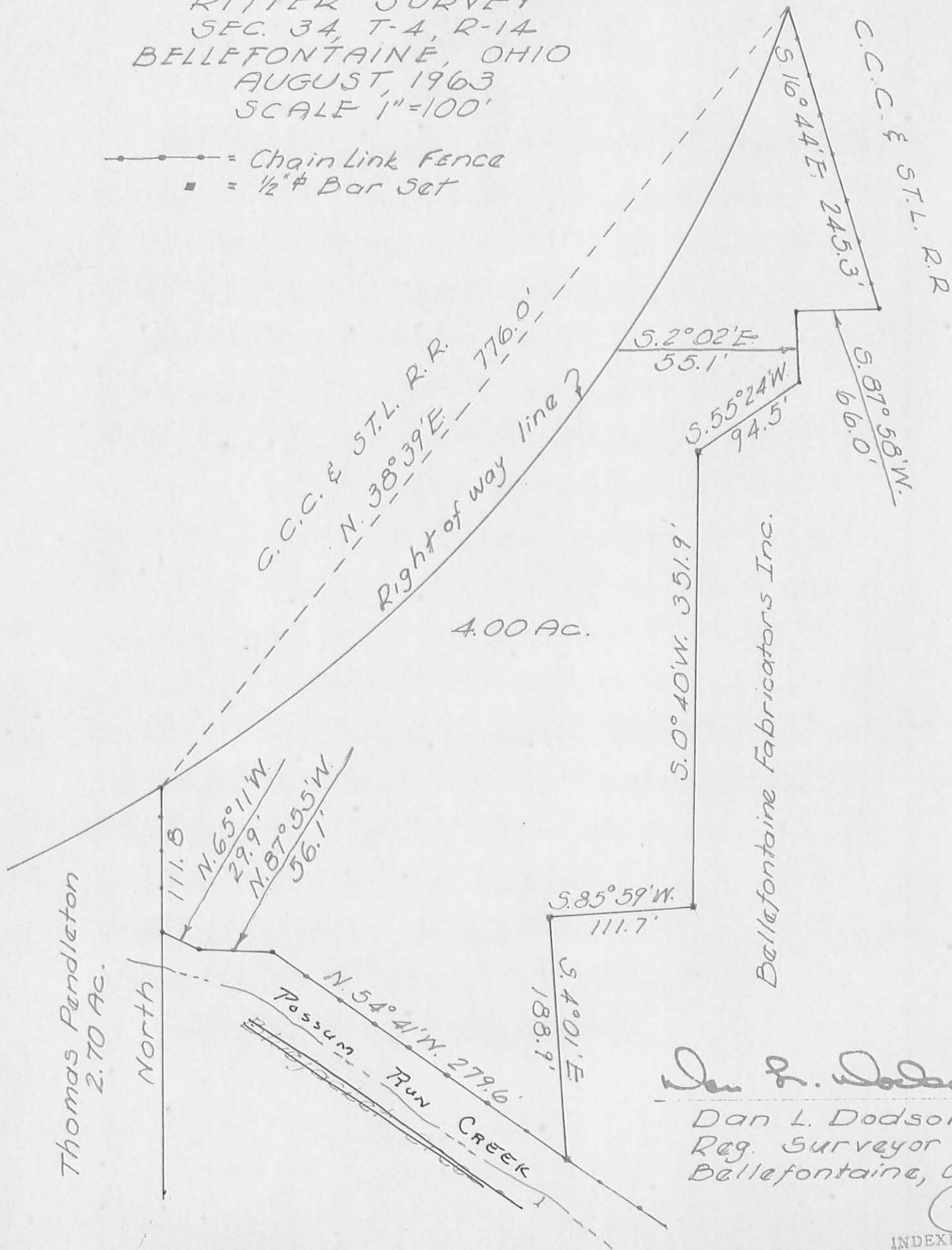
4.00

2D
3576

INDEXED ON MAP

RITTER SURVEY
 SEC. 34, T-4, R-14
 BELLEFONTAINE, OHIO
 AUGUST, 1963
 SCALE 1"=100'

- = Chain Link Fence
- = 1/2" # Bar Set



Dan L. Dodson

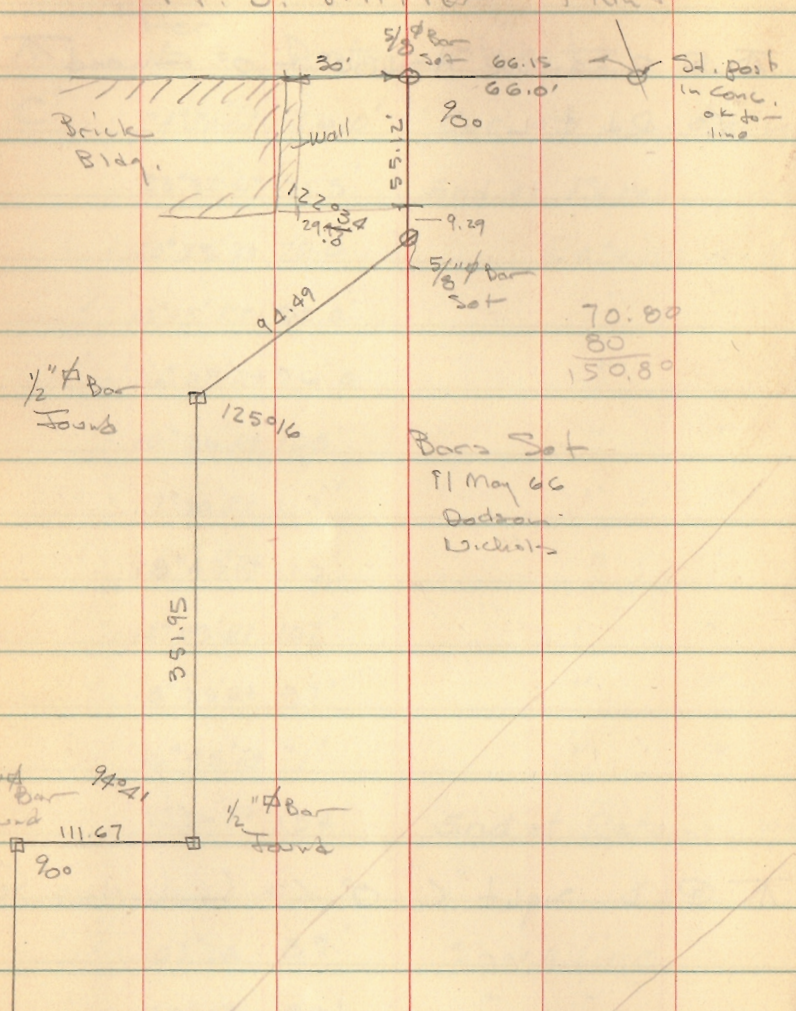
Dan L. Dodson
 Reg. Surveyor 4270
 Bellefontaine, Ohio

3576 2P

INDEXED ON MAP

A. J. Miller Plot

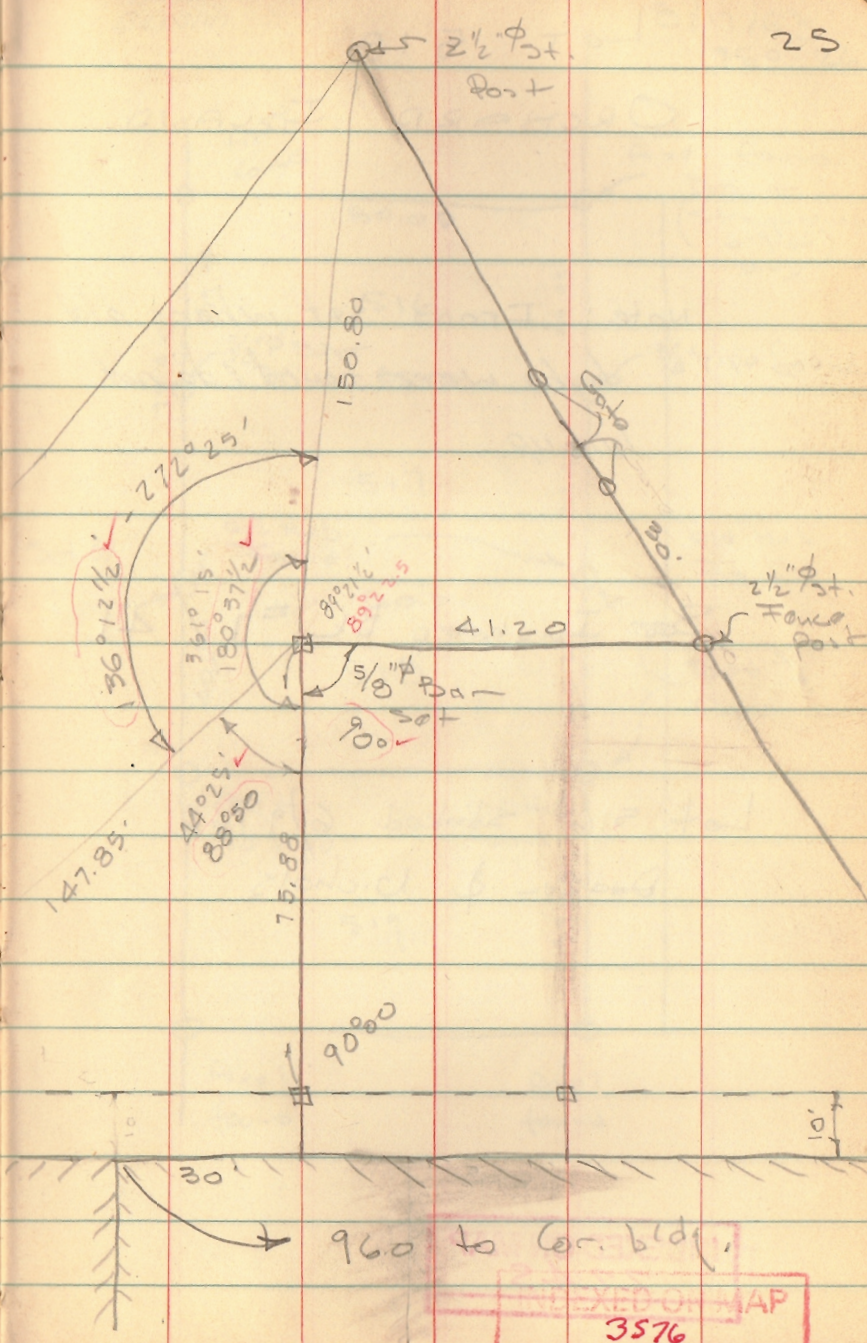
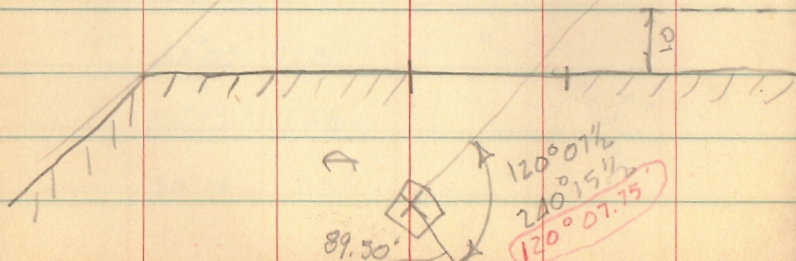
25



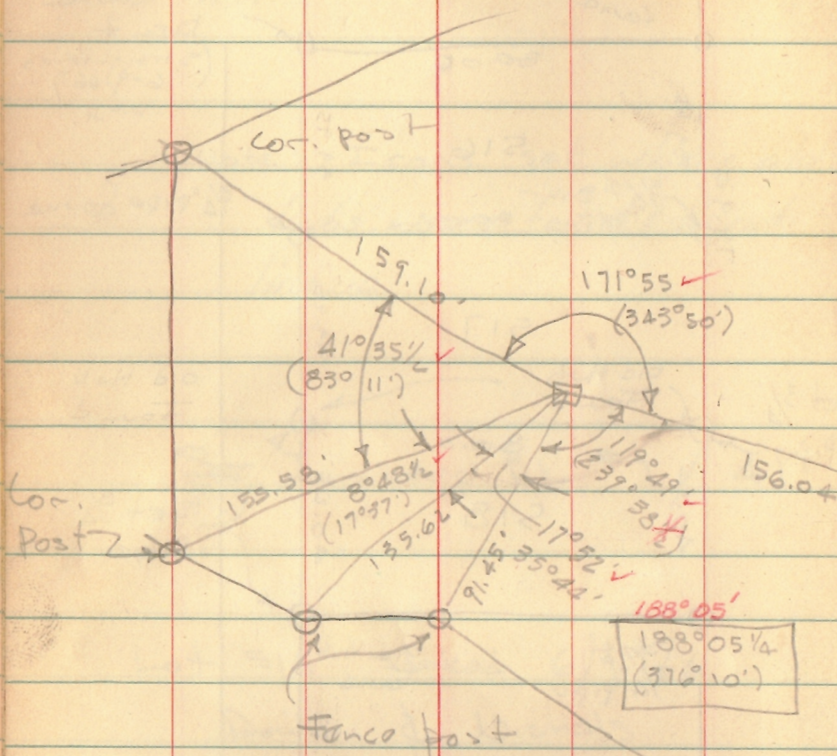
Bars Set
 11 May 66
 Dadson
 Wickham

70:80
 80
 150.80

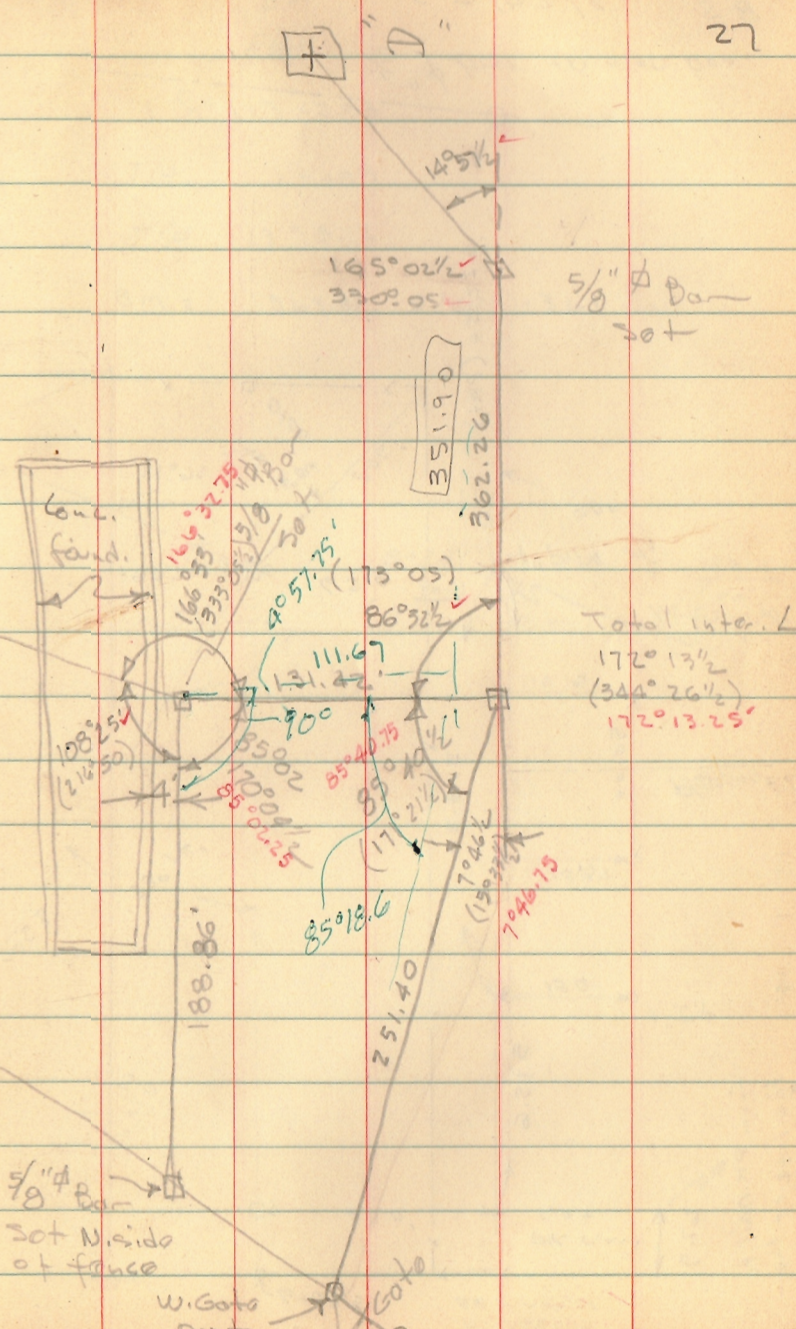
1/2" Bar Found 94.41
 111.67
 90°
 1/2" Bar Found



96.0 to Cor. bldg.
 INDEXED ON MAP
 3576

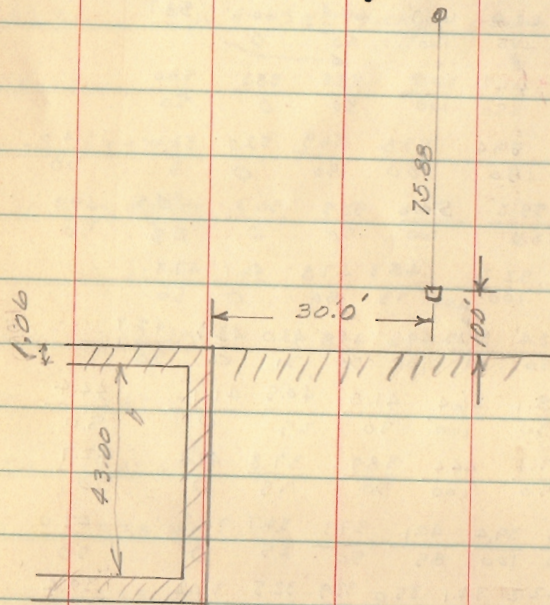


INDEXED ON MAP
3576



Total Inter. \angle
172°13 1/2'
(344°26 1/2')
172°13.25'

A J Miller Plant (cont.)



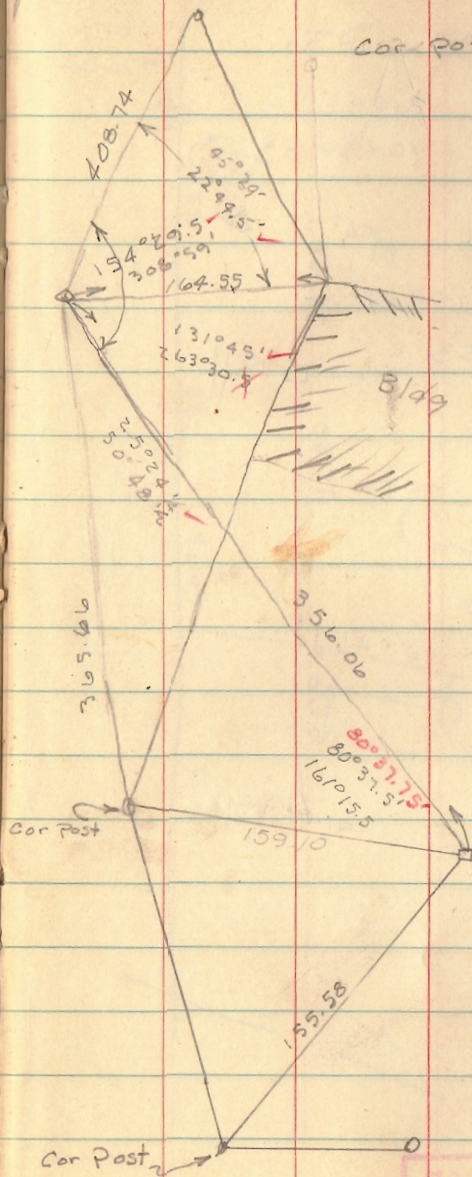
INDEXED ON MAP
3576

8-29-63

Geaslin Westbay 20

Car Post

Time 2 1/2 Hrs

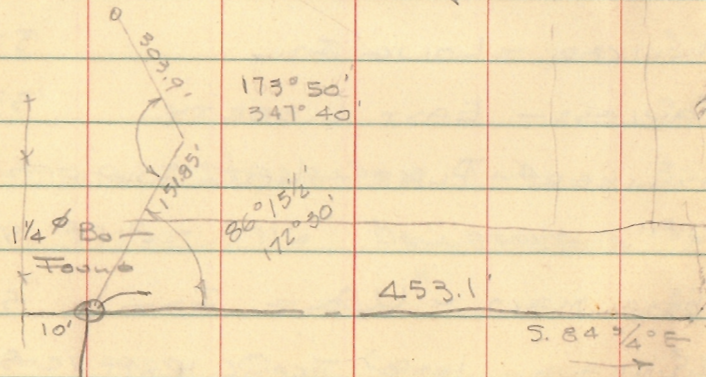


INDEXED ON MAP
3576

S.E. Cor. of A.J.M. Hart Property

∇ @ "A" right "B" \angle \rightarrow R+L

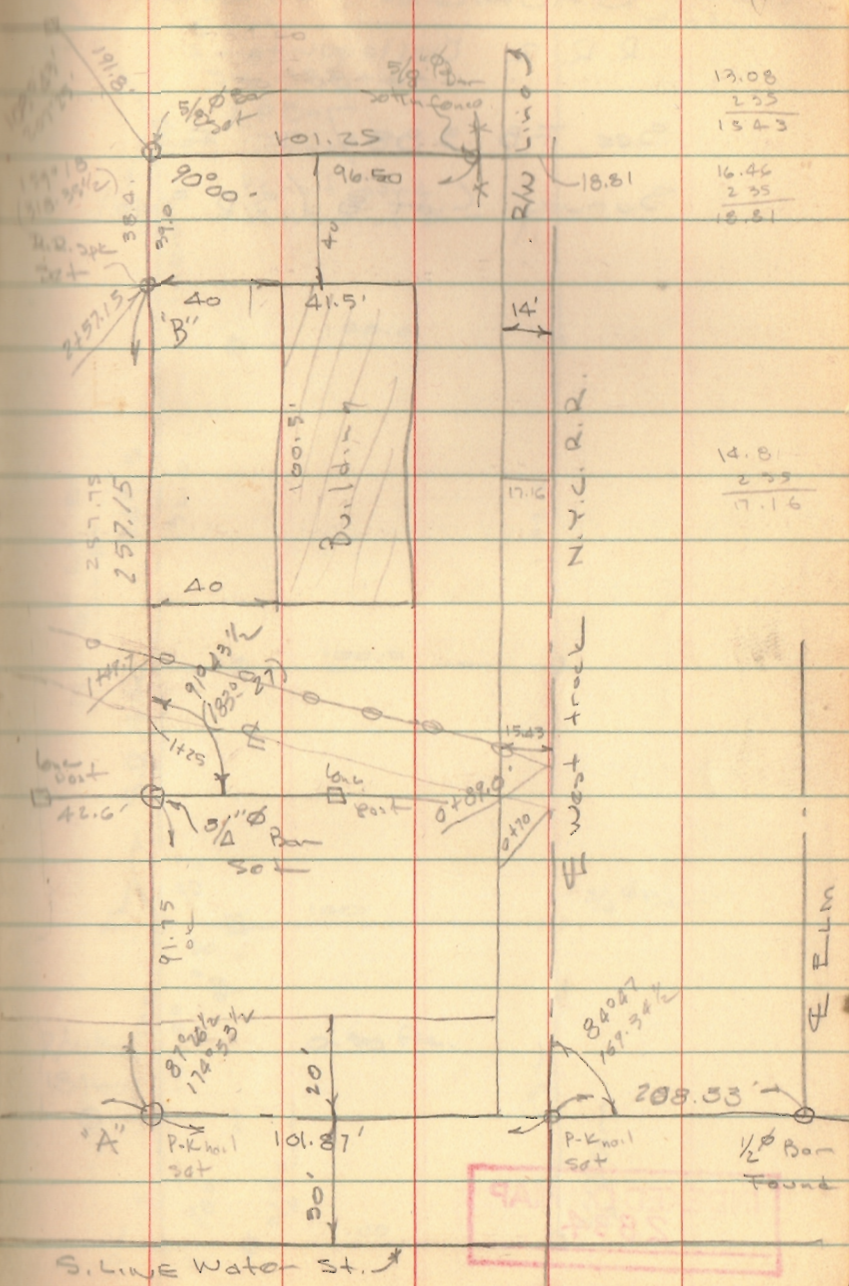
Horiz	Dist	Object
24°36'LT	102'	10" \square Conc. post (R?)
17°29'LT	153'	S.E. cor Bridge
16°12'LT	168'	N.E. " "
21°19'LT	188'	NW " "
22°58'LT	171'	Sw " "
25°49'RT	100'	10" \square Conc. Post @ S. edge stream
49°15'RT	108'	10" \square Conc. Post @ " "
52°42'RT	116'	Sw. br. br. @ R.R.
48°53'RT	123'	N.W. " " "
41°49'RT	134'	2" ϕ steel Conc. post



INDEXED ON MAP
35 76

Dodson
G. Geallie

1/11/64
20°



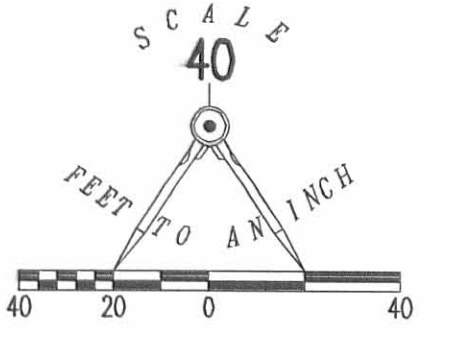
13.08
2.35
13.43
16.46
2.35
18.81

14.81
2.35
17.16

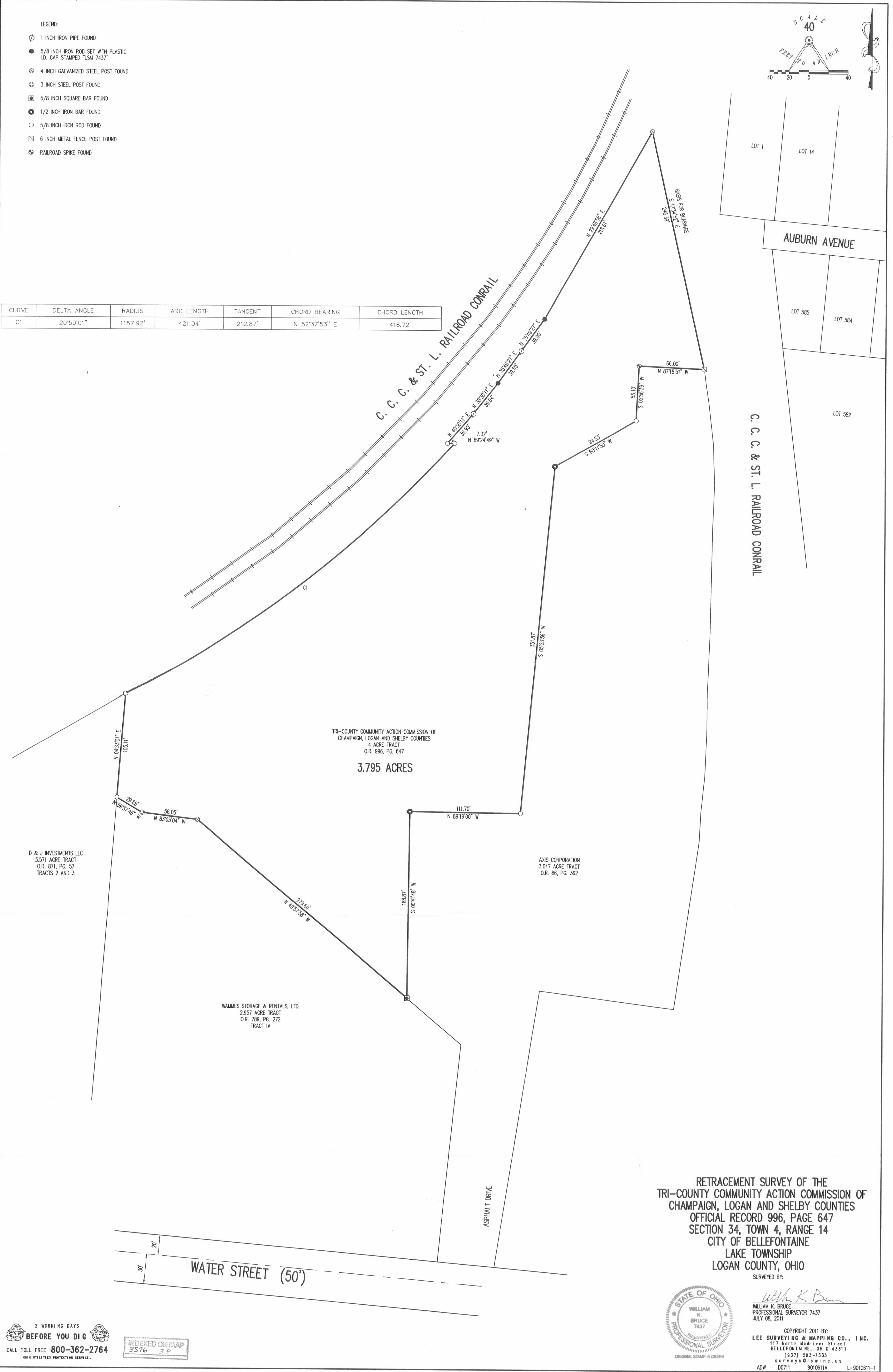
INDEXED ON MAP
35 76

LEGEND:

- 1 INCH IRON PIPE FOUND
- 5/8 INCH IRON ROD SET WITH PLASTIC I.D. CAP STAMPED "LSM 7437"
- ⊗ 4 INCH GALVANIZED STEEL POST FOUND
- ⊙ 3 INCH STEEL POST FOUND
- 5/8 INCH SQUARE BAR FOUND
- 1/2 INCH IRON BAR FOUND
- 5/8 INCH IRON ROD FOUND
- ⊠ 6 INCH METAL FENCE POST FOUND
- ⦿ RAILROAD SPIKE FOUND



CURVE	DELTA ANGLE	RADIUS	ARC LENGTH	TANGENT	CHORD BEARING	CHORD LENGTH
C1	20°50'01"	1157.92'	421.04'	212.87'	N 52°37'53" E	418.72'



RETRACEMENT SURVEY OF THE
TRI-COUNTY COMMUNITY ACTION COMMISSION OF
CHAMPAIGN, LOGAN AND SHELBY COUNTIES
OFFICIAL RECORD 996, PAGE 647
SECTION 34, TOWN 4, RANGE 14
CITY OF BELLEFONTAINE
LAKE TOWNSHIP
LOGAN COUNTY, OHIO



SURVEYED BY:
William K. Bruce
WILLIAM K. BRUCE
PROFESSIONAL SURVEYOR 7437
JULY 08, 2011

COPYRIGHT 2011 BY:
LEE SURVEYING & MAPPING CO., INC.
117 North Madison Street
BELLEFONTAINE, OHIO 43311
(837) 583-7335
surveys@lisminc.us
ADW D0711 9010611A L-9010611-1

2 WORKING DAYS
BEFORE YOU DIG
CALL TOLL FREE 800-362-2764
OHIO UTILITY PROTECTION SERVICE

INDEXED ON MAP
3576 3P

REC'D 1-27-12 smj/ck

Lee Surveying and Mapping Co., Inc.

Land Surveys • Topography • Subdivisions • Construction Layout

117 N. Madriver St.
Bellefontaine OH 43311



Phone: (937) 593-7335
Fax: (937) 593-7444
surveys@lsminc.us

AXIS CORPORATION INGRESS/EGRESS EASEMENT

Lying in Section 34, Town 4, Range 14, City of Bellefontaine, Lake Township, Logan County, Ohio.

Being an ingress/egress easement over a portion of the Axis Corporation 3.047 acre tract as deeded and described in Official Record 86, Page 362 of the Logan County Records of Deeds and being more particularly described as follows:

Commencing on a 1-1/2 inch iron rod found on an angle point on the center-line of Water Street.

THENCE, with the center-line of Water Street (20 feet wide north and 30 feet wide south), S 84°-51'-34"E, a distance of 365.64 feet to a point.

THENCE, N 05°56'-40"E, a distance of 20.09 feet to a 5/8 inch iron rod found on the north right-of-way of Water Street.

THENCE, with the north right-of-way of Water Street and the south line of the aforesaid 3.047 acre tract, S 84°-51'-34"E, a distance of 14.44 feet to a point at the TRUE POINT OF BEGINNING.

THENCE, N 52°-30'-39"E, a distance of 16.40 feet to a point.

THENCE, N 05°-17'-57"E, a distance of 104.08 feet to a point.

THENCE, N 14°-04'-07"E, a distance of 81.47 feet to a point.

THENCE, N 08°-44'-30"E, a distance of 67.48 feet to a point.

THENCE, N06°-54'-53"E, a distance of 109.73 feet to a point.

THENCE, N 14°-13'-42"W, a distance of 32.93 feet to a point.

THENCE, N 40°-24'-11"W, a distance of 71.48 feet to a point on a southerly line of the Tri-County Community Action Commission of Champaign, Logan and Shelby Counties 4 acre tract (O.R. 996, Pg. 647).

THENCE, with the lines of the said 4 acre tract, the following three courses:

S 89°-19'-00"E, a distance of 55.37 feet to a 5/8 inch iron rod found.

N 05°-23'-56"E, a distance of 351.87 feet to a 1/2 inch square iron bar found.

N 60°-11'-50"E, a distance of 64.83 feet to a point.

THENCE, S 49°-19'-53"W, a distance of 23.60 feet to a point.

THENCE, S 38°-26'-36"W, a distance of 37.70 feet to a point.

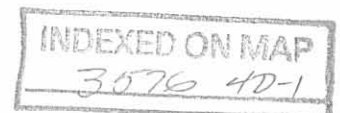
THENCE, S 16°-30'-35"W, a distance of 49.33 feet to a point.

THENCE, S 05°-57'-27"W, a distance of 47.29 feet to a point.

THENCE, S 05°-08'-48"W, a distance of 55.70 feet to a point.

THENCE, S 00°-45'-17"W, a distance of 56.85 feet to a point.

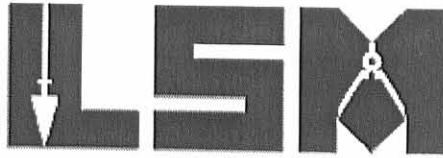
THENCE, S03°-28'-29"E, a distance of 51.66 feet to a point.



Lee Surveying and Mapping Co., Inc.

Land Surveys • Topography • Subdivisions • Construction Layout

117 N. Madriver St.
Bellefontaine OH 43311



Phone: (937) 593-7335
Fax: (937) 593-7444
surveys@lsminc.us

THENCE, S 02°-10'-35"W, a distance of 23.32 feet to a point.

THENCE, S 04°-46'-03"W, a distance of 93.69 feet to a point.

THENCE, S 04°-27'-39"W, a distance of 55.87 feet to a point.

THENCE, S 06°-05'-16"W, a distance of 53.69 feet to a point.

THENCE, S 08°-26'-53"W, a distance of 104.70 feet to a point.

THENCE, S 12°-07'-50"W, a distance of 99.51 feet to a point.

THENCE, S 02°-54'-55"W, a distance of 39.59 feet to a point.

THENCE, S 01°-49'-08"E, a distance of 19.75 feet to a point on the west line of the Todd Lamb 0.34 acre tract (O.R. 1043, Pg. 358, Parcel One, Tract II).

THENCE, with the west line of the said 0.34 acre tract, S 05°-06'-41"W, a distance of 50.61 feet to a 5/8 inch iron rod found on the north right-of-way of Water Street.

THENCE, with the north line of Water Street, N 84°-51'-34"W, a distance of 32.55 feet to the point of beginning.

Property is subject to any and all previous easements and rights-of-way of record.

The basis for bearings is the center-line of Water Street, being S 84°-51'-34"E, and all other bearings are from angles and distances measured in a field survey by Lee Surveying and Mapping Co., Inc. on September 27, 2011.

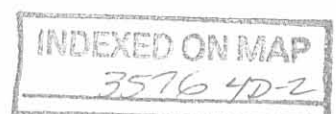
Description prepared by:

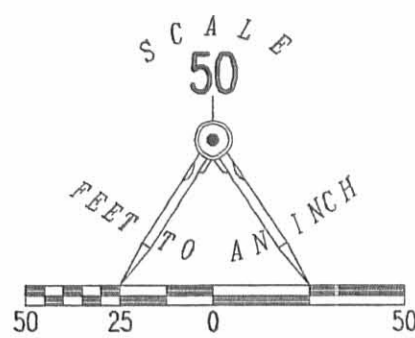
William K. Bruce
Professional Surveyor 7437
January 25, 2012



ORIGINAL STAMP IN GREEN

9010112





LEGEND:

- ⊗ 1-1/2 INCH IRON ROD FOUND
- 5/8 INCH IRON ROD FOUND
- 1/2 INCH SQUARE IRON BAR FOUND
- × POINT

LINE	BEARING	DISTANCE
L1	S 84°51'34" E	14.44'
L2	N 52°30'39" E	16.40'
L3	N 05°17'57" E	104.08'
L4	N 14°04'07" E	81.47'
L5	N 08°44'30" E	67.48'
L6	N 06°54'53" E	109.73'
L7	N 14°13'42" W	32.93'
L8	N 40°24'11" W	71.48'
L9	S 49°19'53" W	23.60'
L10	S 38°26'36" W	37.70'
L11	S 16°30'35" W	49.33'
L12	S 05°57'27" W	47.29'
L13	S 05°08'48" W	55.70'
L14	S 00°45'17" W	56.85'
L15	S 03°28'29" E	51.66'
L16	S 02°10'35" W	23.32'
L17	S 04°46'03" W	93.69'
L18	S 04°27'39" W	55.87'
L19	S 06°05'16" W	53.69'
L20	S 08°26'53" W	104.70'
L21	S 12°07'50" W	99.51'
L22	S 02°54'55" W	39.59'
L23	S 01°49'08" E	19.75'
L24	N 84°51'34" W	32.55'

TRI-COUNTY COMMUNITY ACTION
COMMISSION OF CHAMPAIGN, LOGAN AND
SHELBY COUNTIES
4 ACRES
O.R. 996, PG. 647

WAMMES STORAGE & RENTALS, LTD.
2.957 ACRES
O.R. 789, PG. 272
TRACT IV

AXIS CORPORATION
3.047 ACRES
O.R. 86, PG. 362

INGRESS/EGRESS
EASEMENT

ASPHALT
DRIVE

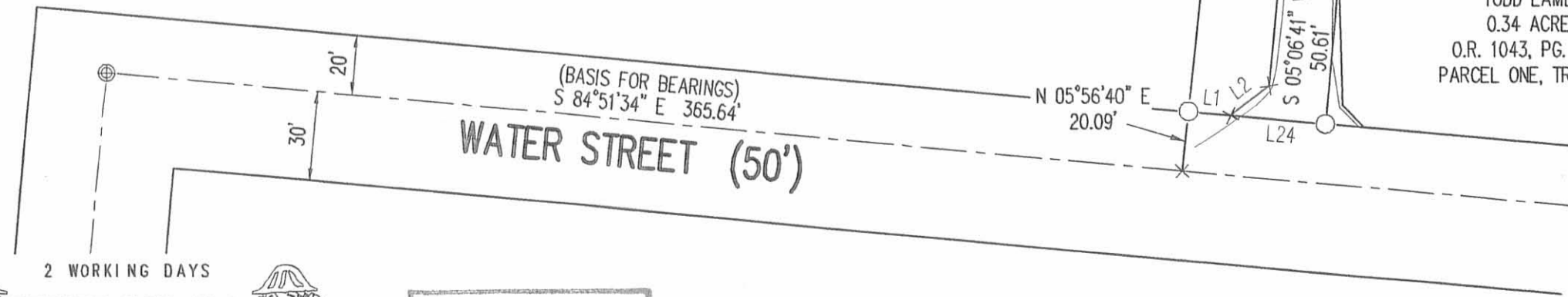
**SURVEY OF AN INGRESS/EGRESS EASEMENT
OVER A PORTION OF THE
AXIS CORPORATION
3.047 ACRE TRACT
OFFICIAL RECORD 86, PAGE 362
SECTION 34, TOWN 4, RANGE 14
CITY OF BELLEFONTAINE
LAKE TOWNSHIP
LOGAN COUNTY, OHIO**

PREPARED BY:

William K. Bruce
WILLIAM K. BRUCE
PROFESSIONAL SURVEYOR 7437
JANUARY 25, 2012
(LAST DAY OF FIELD WORK SEPTEMBER 27, 2011)



COPYRIGHT 2012 BY:
LEE SURVEYING & MAPPING CO
117 North Madriver Street, INC.
BELLEFONTAINE, OHIO 43311
(937) 593-7335
WWW.LSMINC.US
surveys@lsminc.us
KSS D0112 9010112 L-901-2



2 WORKING DAYS
BEFORE YOU DIG
CALL TOLL FREE **800-362-2764**
OHIO UTILITIES PROTECTION SERVICE

INDEXED ON MAP
35710 41

REC'D 1-27-12 smj/ck

Lee Surveying and Mapping Co., Inc.

Land Surveys • Topography • Subdivisions • Construction Layout

117 N. Madriver St.
Bellefontaine OH 43311



Phone: (937) 593-7335
Fax: (937) 593-7444
surveys@lsminc.us

AXIS CORPORATION INGRESS/EGRESS EASEMENT

Lying in Section 34, Town 4, Range 14, City of Bellefontaine, Lake Township, Logan County, Ohio.

Being an ingress/egress easement over a portion of the Axis Corporation 3.047 acre tract as deeded and described in Official Record 86, Page 362 of the Logan County Records of Deeds and being more particularly described as follows:

Commencing on a 1-1/2 inch iron rod found on an angle point on the center-line of Water Street.

THENCE, with the center-line of Water Street (20 feet wide north and 30 feet wide south), S 84°-51'-34"E, a distance of 365.64 feet to a point.

THENCE, N 05°56'-40"E, a distance of 20.09 feet to a 5/8 inch iron rod found on the north right-of-way of Water Street.

THENCE, with the north right-of-way of Water Street and the south line of the aforesaid 3.047 acre tract, S 84°-51'-34"E, a distance of 14.44 feet to a point at the TRUE POINT OF BEGINNING.

THENCE, N 52°-30'-39"E, a distance of 16.40 feet to a point.

THENCE, N 05°-17'-57"E, a distance of 104.08 feet to a point.

THENCE, N 14°-04'-07"E, a distance of 81.47 feet to a point.

THENCE, N 08°-44'-30"E, a distance of 67.48 feet to a point.

THENCE, N06°-54'-53"E, a distance of 109.73 feet to a point.

THENCE, N 14°-13'-42"W, a distance of 32.93 feet to a point.

THENCE, N 40°-24'-11"W, a distance of 71.48 feet to a point on a southerly line of the Tri-County Community Action Commission of Champaign, Logan and Shelby Counties 4 acre tract (O.R. 996, Pg. 647).

THENCE, with the lines of the said 4 acre tract, the following three courses:

S 89°-19'-00"E, a distance of 55.37 feet to a 5/8 inch iron rod found.

N 05°-23'-56"E, a distance of 351.87 feet to a 1/2 inch square iron bar found.

N 60°-11'-50"E, a distance of 64.83 feet to a point.

THENCE, S 49°-19'-53"W, a distance of 23.60 feet to a point.

THENCE, S 38°-26'-36"W, a distance of 37.70 feet to a point.

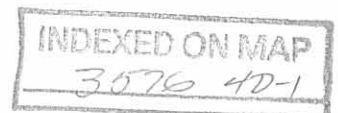
THENCE, S 16°-30'-35"W, a distance of 49.33 feet to a point.

THENCE, S 05°-57'-27"W, a distance of 47.29 feet to a point.

THENCE, S 05°-08'-48"W, a distance of 55.70 feet to a point.

THENCE, S 00°-45'-17"W, a distance of 56.85 feet to a point.

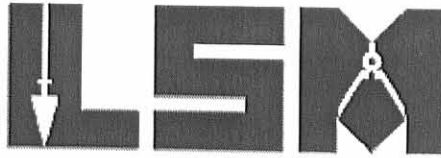
THENCE, S03°-28'-29"E, a distance of 51.66 feet to a point.



Lee Surveying and Mapping Co., Inc.

Land Surveys • Topography • Subdivisions • Construction Layout

117 N. Madriver St.
Bellefontaine OH 43311



Phone: (937) 593-7335
Fax: (937) 593-7444
surveys@lsminc.us

THENCE, S 02°-10'-35"W, a distance of 23.32 feet to a point.

THENCE, S 04°-46'-03"W, a distance of 93.69 feet to a point.

THENCE, S 04°-27'-39"W, a distance of 55.87 feet to a point.

THENCE, S 06°-05'-16"W, a distance of 53.69 feet to a point.

THENCE, S 08°-26'-53"W, a distance of 104.70 feet to a point.

THENCE, S 12°-07'-50"W, a distance of 99.51 feet to a point.

THENCE, S 02°-54'-55"W, a distance of 39.59 feet to a point.

THENCE, S 01°-49'-08"E, a distance of 19.75 feet to a point on the west line of the Todd Lamb 0.34 acre tract (O.R. 1043, Pg. 358, Parcel One, Tract II).

THENCE, with the west line of the said 0.34 acre tract, S 05°-06'-41"W, a distance of 50.61 feet to a 5/8 inch iron rod found on the north right-of-way of Water Street.

THENCE, with the north line of Water Street, N 84°-51'-34"W, a distance of 32.55 feet to the point of beginning.

Property is subject to any and all previous easements and rights-of-way of record.

The basis for bearings is the center-line of Water Street, being S 84°-51'-34"E, and all other bearings are from angles and distances measured in a field survey by Lee Surveying and Mapping Co., Inc. on September 27, 2011.

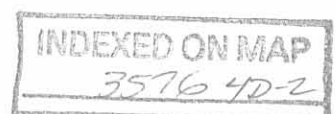
Description prepared by:

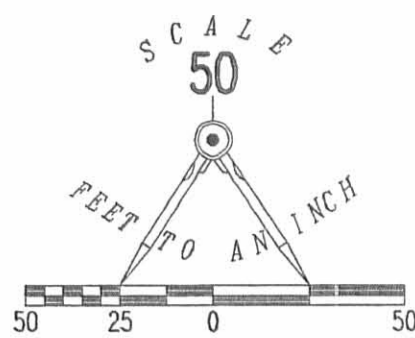
William K. Bruce
Professional Surveyor 7437
January 25, 2012



ORIGINAL STAMP IN GREEN

9010112





LEGEND:

- ⊗ 1-1/2 INCH IRON ROD FOUND
- 5/8 INCH IRON ROD FOUND
- 1/2 INCH SQUARE IRON BAR FOUND
- × POINT

LINE	BEARING	DISTANCE
L1	S 84°51'34" E	14.44'
L2	N 52°30'39" E	16.40'
L3	N 05°17'57" E	104.08'
L4	N 14°04'07" E	81.47'
L5	N 08°44'30" E	67.48'
L6	N 06°54'53" E	109.73'
L7	N 14°13'42" W	32.93'
L8	N 40°24'11" W	71.48'
L9	S 49°19'53" W	23.60'
L10	S 38°26'36" W	37.70'
L11	S 16°30'35" W	49.33'
L12	S 05°57'27" W	47.29'
L13	S 05°08'48" W	55.70'
L14	S 00°45'17" W	56.85'
L15	S 03°28'29" E	51.66'
L16	S 02°10'35" W	23.32'
L17	S 04°46'03" W	93.69'
L18	S 04°27'39" W	55.87'
L19	S 06°05'16" W	53.69'
L20	S 08°26'53" W	104.70'
L21	S 12°07'50" W	99.51'
L22	S 02°54'55" W	39.59'
L23	S 01°49'08" E	19.75'
L24	N 84°51'34" W	32.55'

TRI-COUNTY COMMUNITY ACTION
COMMISSION OF CHAMPAIGN, LOGAN AND
SHELBY COUNTIES
4 ACRES
O.R. 996, PG. 647

WAMMES STORAGE & RENTALS, LTD.
2.957 ACRES
O.R. 789, PG. 272
TRACT IV

AXIS CORPORATION
3.047 ACRES
O.R. 86, PG. 362

INGRESS/EGRESS
EASEMENT

ASPHALT
DRIVE

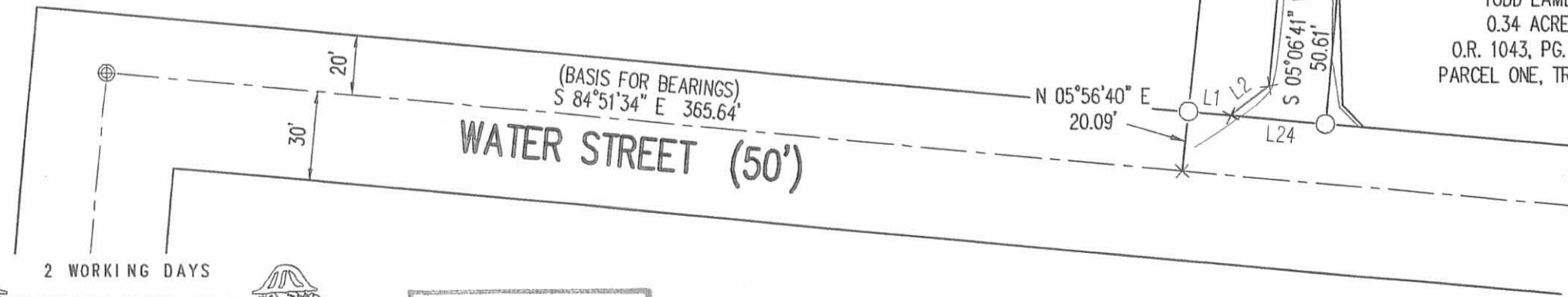
**SURVEY OF AN INGRESS/EGRESS EASEMENT
OVER A PORTION OF THE
AXIS CORPORATION
3.047 ACRE TRACT
OFFICIAL RECORD 86, PAGE 362
SECTION 34, TOWN 4, RANGE 14
CITY OF BELLEFONTAINE
LAKE TOWNSHIP
LOGAN COUNTY, OHIO**

PREPARED BY:

William K. Bruce
WILLIAM K. BRUCE
PROFESSIONAL SURVEYOR 7437
JANUARY 25, 2012
(LAST DAY OF FIELD WORK SEPTEMBER 27, 2011)



COPYRIGHT 2012 BY:
LEE SURVEYING & MAPPING CO
117 North Madriver Street, INC.
BELLEFONTAINE, OHIO 43311
(937) 593-7335
WWW.LSMINC.US
surveys@lsminc.us
KSS D0112 9010112 L-901-2



2 WORKING DAYS
BEFORE YOU DIG
CALL TOLL FREE **800-362-2764**
OHIO UTILITIES PROTECTION SERVICE

INDEXED ON MAP
35710 41

REC'D 1-27-12 smj/c

Lee Surveying and Mapping Co., Inc.

Land Surveys • Topography • Subdivisions • Construction Layout

117 N. Madriver St.
Bellefontaine OH 43311



Phone: (937) 593-7335
Fax: (937) 593-7444
surveys@lsminc.us

AXIS CORPORATION INGRESS/EGRESS EASEMENT

Lying in Section 34, Town 4, Range 14, City of Bellefontaine, Lake Township, Logan County, Ohio.

Being an ingress/egress easement over a portion of the Axis Corporation 3.047 acre tract as deeded and described in Official Record 86, Page 362 of the Logan County Records of Deeds and being more particularly described as follows:

Commencing on a 1-1/2 inch iron rod found on an angle point on the center-line of Water Street.

THENCE, with the center-line of Water Street (20 feet wide north and 30 feet wide south), S 84°-51'-34"E, a distance of 365.64 feet to a point.

THENCE, N 05°56'-40"E, a distance of 20.09 feet to a 5/8 inch iron rod found on the north right-of-way of Water Street.

THENCE, with the north right-of-way of Water Street and the south line of the aforesaid 3.047 acre tract, S 84°-51'-34"E, a distance of 14.44 feet to a point at the TRUE POINT OF BEGINNING.

THENCE, N 52°-30'-39"E, a distance of 16.40 feet to a point.

THENCE, N 05°-17'-57"E, a distance of 104.08 feet to a point.

THENCE, N 14°-04'-07"E, a distance of 81.47 feet to a point.

THENCE, N 08°-44'-30"E, a distance of 67.48 feet to a point.

THENCE, N06°-54'-53"E, a distance of 109.73 feet to a point.

THENCE, N 14°-13'-42"W, a distance of 32.93 feet to a point.

THENCE, N 40°-24'-11"W, a distance of 71.48 feet to a point on a southerly line of the Tri-County Community Action Commission of Champaign, Logan and Shelby Counties 4 acre tract (O.R. 996, Pg. 647).

THENCE, with the lines of the said 4 acre tract, the following three courses:

S 89°-19'-00"E, a distance of 55.37 feet to a 5/8 inch iron rod found.

N 05°-23'-56"E, a distance of 351.87 feet to a 1/2 inch square iron bar found.

N 60°-11'-50"E, a distance of 64.83 feet to a point.

THENCE, S 49°-19'-53"W, a distance of 23.60 feet to a point.

THENCE, S 38°-26'-36"W, a distance of 37.70 feet to a point.

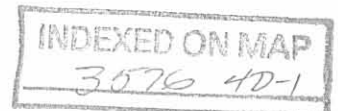
THENCE, S 16°-30'-35"W, a distance of 49.33 feet to a point.

THENCE, S 05°-57'-27"W, a distance of 47.29 feet to a point.

THENCE, S 05°-08'-48"W, a distance of 55.70 feet to a point.

THENCE, S 00°-45'-17"W, a distance of 56.85 feet to a point.

THENCE, S03°-28'-29"E, a distance of 51.66 feet to a point.



REC'D 4-4-12 SM OK

Lee Surveying and Mapping Co., Inc.

Land Surveys • Topography • Subdivisions • Construction Layout

117 N. Madriver St.
Bellefontaine OH 43311



Phone: (937) 593-7335
Fax: (937) 593-7444
surveys@lsminc.us

TRI-COUNTY COMMUNITY ACTION COMMUNITY ACTION COMMISSION OF CHAMPAIGN, LOGAN AND SHELBY COUNTIES INGRESS/EGRESS EASEMENT #1

Lying in Section 34, Town 4, Range 14, City of Bellefontaine, Lake Township, Logan County, Ohio.

Being an ingress/egress easement over a portion of the Tri-County Community Action Commission of Champaign, Logan and Shelby Counties 4 acre tract as deeded and described in Official Record 996, Page 647 of the Logan County Records of Deeds and being more particularly described as follows:

Commencing on a 1-1/2 inch iron rod found on an angle point on the center-line of Water Street.

THENCE, with the center-line of Water Street (20 feet wide north and 30 feet wide south), S 84°-51'-34"E, a distance of 365.64 feet to a point.

THENCE, with the extension of the westerly line and the westerly lines of the Axis Corporation 3.047 acre tract (O.R. 86, Pg. 362), the following five courses:

N 05°-56'-40"E, a distance of 239.70 feet to a 5/8 inch iron rod found, passing a 5/8 inch iron rod found at 20.09 feet.

N 49°-57'-58"W, a distance of 72.51 feet to a 1/2 inch square iron bar found.

N 00°-41'-48"E, a distance of 188.87 feet to a 1/2 inch square iron bar found.

S 89°-19'-00"E, a distance of 111.70 feet to a 5/8 inch iron rod found.

N 05°-23'-56"E, a distance of 98.10 feet to a point at the TRUE POINT OF BEGINNING.

THENCE, N 54°-56'-50"W, a distance of 17.55 feet to a point.

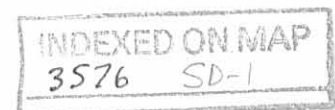
THENCE, N 02°-44'-40"E, a distance of 37.23 feet to a point.

THENCE, N 28°-29'-51"E, a distance of 19.02 feet to a point.

THENCE, N 30°-30'-48"W, a distance of 16.81 feet to a point.

THENCE, N08°-09'-52"E, a distance of 33.84 feet to a point.

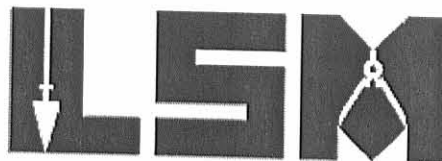
THENCE, N 35°-04'-31"E, a distance of 15.29 feet to a point.



Lee Surveying and Mapping Co., Inc.

Land Surveys • Topography • Subdivisions • Construction Layout

117 N. Madriver St.
Bellefontaine OH 43311



Phone: (937) 593-7335
Fax: (937) 593-7444
surveys@lsminc.us

THENCE, N 06°-11'-34"E, a distance of 63.08 feet to a point.

THENCE, N 13°-28'-05"E, a distance of 46.69 feet to a point.

THENCE, N 18°-28'-34"E, a distance of 12.10 feet to a point on the westerly line of the aforesaid 3.047 acre tract, referenced by a ½ inch square iron bar found bearing N 05°-23'-56"E, a distance of 8.62 feet.

THENCE, with the westerly line of the said 3.047 acre tract, S 05°-23'-56"W, a distance of 245.15 feet to the point of beginning.

Property is subject to any and all previous easements and rights-of-way of record.

The basis for bearings is the center-line of Water Street, being S 84°-51'-34"E, and all other bearings are from angles and distances measured in a field survey by Lee Surveying and Mapping Co., Inc. on September 27, 2011.



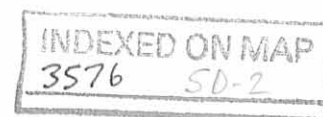
ORIGINAL STAMP IN GREEN

Description prepared by:

A handwritten signature in cursive script that reads 'William K. Bruce'.

William K. Bruce
Professional Surveyor 7437
March 30, 2012

9010312



REV'D 4-4-12 SMY OK

Lee Surveying and Mapping Co., Inc.

Land Surveys • Topography • Subdivisions • Construction Layout

117 N. Madriver St.
Bellefontaine OH 43311



Phone: (937) 593-7335
Fax: (937) 593-7444
surveys@lsminc.us

TRI-COUNTY COMMUNITY ACTION COMMUNITY ACTION COMMISSION OF CHAMPAIGN, LOGAN AND SHELBY COUNTIES INGRESS/EGRESS EASEMENT #2

Lying in Section 34, Town 4, Range 14, City of Bellefontaine, Lake Township, Logan County, Ohio.

Being an ingress/egress easement over a portion of the Tri-County Community Action Commission of Champaign, Logan and Shelby Counties 4 acre tract as deeded and described in Official Record 996, Page 647 of the Logan County Records of Deeds and being more particularly described as follows:

Commencing on a 1-1/2 inch iron rod found on an angle point on the center-line of Water Street.

THENCE, with the center-line of Water Street (20 feet wide north and 30 feet wide south), S 84°-51'-34"E, a distance of 365.64 feet to a point.

THENCE, with the extension of the westerly line and the westerly lines of the Axis Corporation 3.047 acre (O.R. 86, Pg. 362), the following six courses:

N 05°-56'-40"E, a distance of 239.70 feet to a 5/8 inch iron rod found, passing a 5/8 inch iron rod found at 20.09 feet.

N 49°-57'-58"W, a distance of 72.51 feet to a 1/2 inch square iron bar found.

N 00°-41'-48"E, a distance of 188.87 feet to a 1/2 inch square iron bar found.

S 89°-19'-00"E, a distance of 111.70 feet to a 5/8 inch iron rod found.

N 05°-23'-56"E, a distance of 351.87 feet to a 1/2 inch square iron bar found.

N 60°-11'-50"E, a distance of 9.85 feet to a point at the TRUE POINT OF BEGINNING.

THENCE, N 40°-06'-06"E, a distance of 13.01 feet to a point.

THENCE, N 42°-23'-58"E, a distance of 30.76 feet to a point.

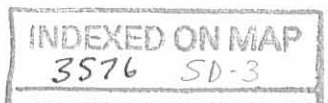
THENCE, N 48°-21'-55"E, a distance of 26.47 feet to a point.

THENCE, N 32°-28'-03"E, a distance of 12.43 feet to a point.

THENCE, N12°-50'-59"E, a distance of 23.95 feet to a point.

THENCE, N 02°-15'-09"W, a distance of 51.33 feet to a point.

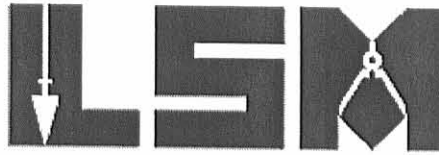
THENCE, N 03°-19'-46"E, a distance of 35.70 feet to a point.



Lee Surveying and Mapping Co., Inc.

Land Surveys • Topography • Subdivisions • Construction Layout

117 N. Madriver St.
Bellefontaine OH 43311



Phone: (937) 593-7335
Fax: (937) 593-7444
surveys@lsminc.us

THENCE, N 18°-00'-37"E, a distance of 28.01 feet to a point.

THENCE, N 41°-26'-49"E, a distance of 29.21 feet to a point.

THENCE, N 76°-15'-00"E, a distance of 24.67 feet to a point on the westerly line of the aforesaid 3.047 acre tract.

THENCE, with the westerly line of the said 3.047 acre tract, S 12°-34'-52"E, a distance of 15.93 feet to a point, referenced by a 6 inch metal fence post found bearing S 12°-34'-52"E, a distance of 118.68 feet.

THENCE, S 76°-15'-00"W, a distance of 19.35 feet to a point.

THENCE, S 41°-26'-49"W, a distance of 20.91 feet to a point.

THENCE, S 18°-00'-37"W, a distance of 22.65 feet to a point.

THENCE, S 03°-19'-46"W, a distance of 32.85 feet to a point.

THENCE, S 02°-12'-42"E, a distance of 38.16 feet to a railroad spike found.

THENCE, with the lines of the said 3.047 acre tract, the following two courses:

S 02°-56'-39"W, a distance of 55.10 feet to a 5/8 inch iron rod found.

S 60°-11'-50"W, a distance of 84.68 feet to the point of beginning.

Property is subject to any and all previous easements and rights-of-way of record.

The basis for bearings is the center-line of Water Street, being S 84°-51'-34"E, and all other bearings are from angles and distances measured in a field survey by Lee Surveying and Mapping Co., Inc. on September 27, 2011.



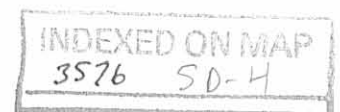
ORIGINAL STAMP IN GREEN

Description prepared by:

A handwritten signature in cursive script that reads 'William K. Bruce'.

William K. Bruce
Professional Surveyor 7437
March 30, 2012

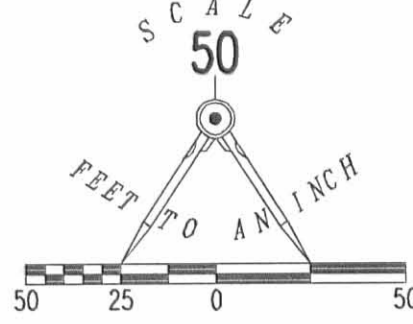
9010312



REC'D 4-4-12 smjau

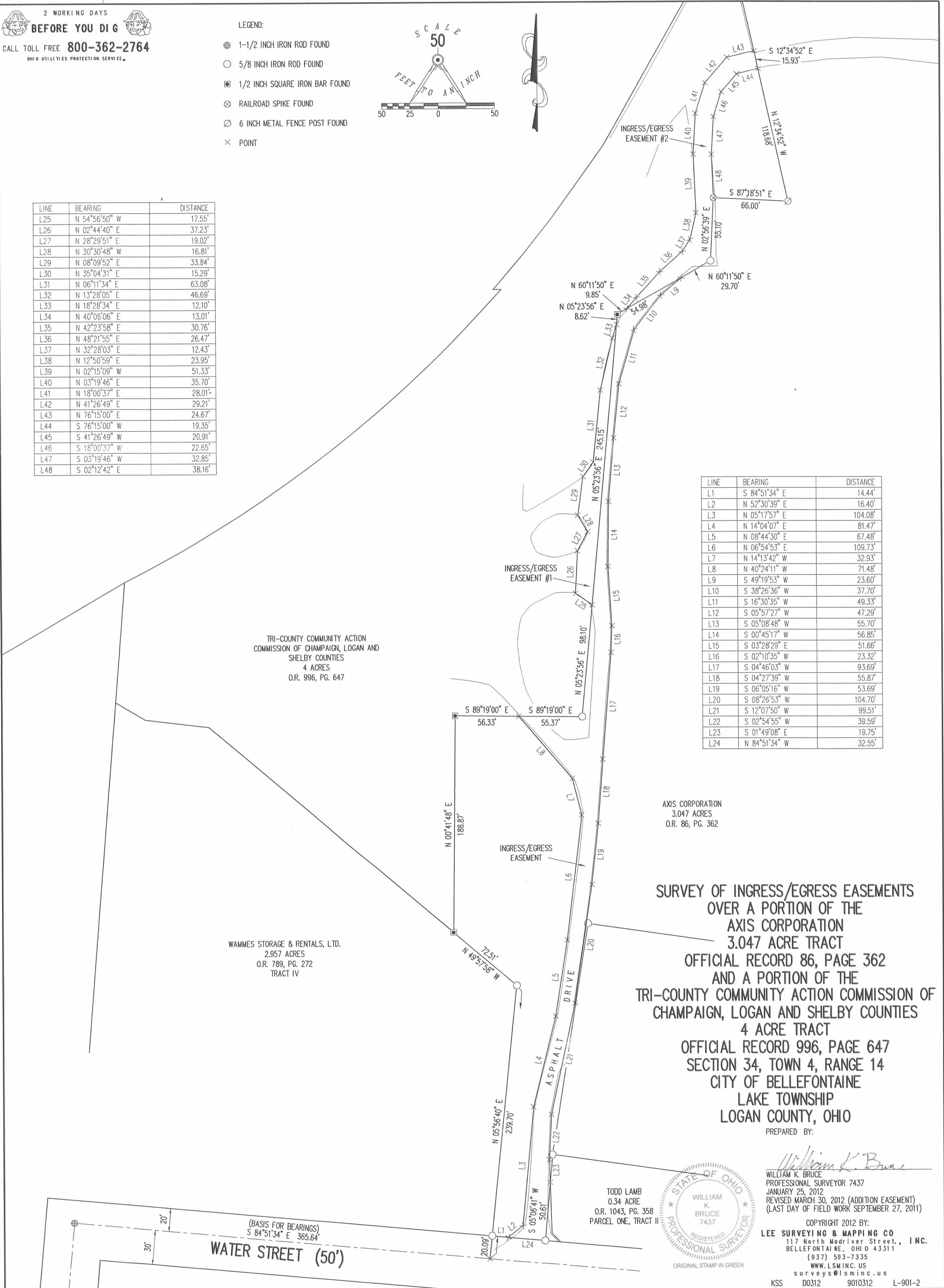
2 WORKING DAYS
BEFORE YOU DIG
CALL TOLL FREE **800-362-2764**
OHIO UTILITIES PROTECTION SERVICE

- LEGEND:
- ⊕ 1-1/2 INCH IRON ROD FOUND
 - 5/8 INCH IRON ROD FOUND
 - 1/2 INCH SQUARE IRON BAR FOUND
 - ⊗ RAILROAD SPIKE FOUND
 - ⊘ 6 INCH METAL FENCE POST FOUND
 - × POINT



LINE	BEARING	DISTANCE
L25	N 54°56'50" W	17.55'
L26	N 02°44'40" E	37.23'
L27	N 28°29'51" E	19.02'
L28	N 30°30'48" W	16.81'
L29	N 08°09'52" E	33.84'
L30	N 35°04'31" E	15.29'
L31	N 06°11'34" E	63.08'
L32	N 13°28'05" E	46.69'
L33	N 18°28'34" E	12.10'
L34	N 40°06'06" E	13.01'
L35	N 42°23'58" E	30.76'
L36	N 48°21'55" E	26.47'
L37	N 32°28'03" E	12.43'
L38	N 12°50'59" E	23.95'
L39	N 02°15'09" W	51.33'
L40	N 03°19'46" E	35.70'
L41	N 18°00'37" E	28.01'
L42	N 41°26'49" E	29.21'
L43	N 76°15'00" E	24.67'
L44	S 76°15'00" W	19.35'
L45	S 41°26'49" W	20.91'
L46	S 18°00'37" W	22.65'
L47	S 03°19'46" W	32.85'
L48	S 02°12'42" E	38.16'

LINE	BEARING	DISTANCE
L1	S 84°51'34" E	14.44'
L2	N 52°30'39" E	16.40'
L3	N 05°17'57" E	104.08'
L4	N 14°04'07" E	81.47'
L5	N 08°44'30" E	67.48'
L6	N 06°54'53" E	109.73'
L7	N 14°13'42" W	32.93'
L8	N 40°24'11" W	71.48'
L9	S 49°19'53" W	23.60'
L10	S 38°26'36" W	37.70'
L11	S 16°30'35" W	49.33'
L12	S 05°57'27" W	47.29'
L13	S 05°08'48" W	55.70'
L14	S 00°45'17" W	56.85'
L15	S 03°28'29" E	51.66'
L16	S 02°10'35" W	23.32'
L17	S 04°46'03" W	93.69'
L18	S 04°27'39" W	55.87'
L19	S 06°05'16" W	53.69'
L20	S 08°26'53" W	104.70'
L21	S 12°07'50" W	99.51'
L22	S 02°54'55" W	39.59'
L23	S 01°49'08" E	19.75'
L24	N 84°51'34" W	32.55'



TRI-COUNTY COMMUNITY ACTION
COMMISSION OF CHAMPAIGN, LOGAN AND
SHELBY COUNTIES
4 ACRES
O.R. 996, PG. 647

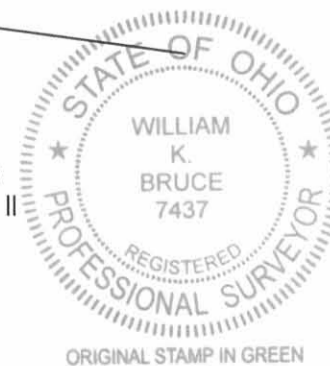
WAMMES STORAGE & RENTALS, LTD.
2.957 ACRES
O.R. 789, PG. 272
TRACT IV

AXIS CORPORATION
3.047 ACRES
O.R. 86, PG. 362

**SURVEY OF INGRESS/EGRESS EASEMENTS
OVER A PORTION OF THE
AXIS CORPORATION
3.047 ACRE TRACT
OFFICIAL RECORD 86, PAGE 362
AND A PORTION OF THE
TRI-COUNTY COMMUNITY ACTION COMMISSION OF
CHAMPAIGN, LOGAN AND SHELBY COUNTIES
4 ACRE TRACT
OFFICIAL RECORD 996, PAGE 647
SECTION 34, TOWN 4, RANGE 14
CITY OF BELLEFONTAINE
LAKE TOWNSHIP
LOGAN COUNTY, OHIO**

PREPARED BY:

William K. Bruce
WILLIAM K. BRUCE
PROFESSIONAL SURVEYOR 7437
JANUARY 25, 2012
REVISED MARCH 30, 2012 (ADDITION EASEMENT)
(LAST DAY OF FIELD WORK SEPTEMBER 27, 2011)



COPYRIGHT 2012 BY:
LEE SURVEYING & MAPPING CO.
117 North Madriver Street., INC.
BELLEFONTAINE, OHIO 43311
(937) 593-7335
WWW.LSMINC.US
surveys@lsminc.us
KSS D0312 9010312 L-901-2

INDEXED ON MAP
3576 SP

2-21-2023



APPROVED



**HOWBERT
SURVEYING**
LLC
8477 MERICLE ROAD
FORT JENNINGS, OHIO 45844
419-863-0289

**Description
For
0.850 Acre
Tract 1**

- Situated in Section 34, Town 4, Range 14, City of Bellefontaine, Lake Township, Logan County, Ohio, being part of a 2.957 acre tract heretofore conveyed to PRO Development, LLC by Official Record Volume 1403, Page 5665 of said County Deed Records and being more particularly described as follows;
- Beginning at the intersection of the north right-of-way line of Water Street (width varies) with the east line of Lot 1081 of Garvins Addition (Plat Cabinet A, Slide 15), being a 5/8" iron pin found;
- Thence along the west line of said 2.957 acre tract and the east line of Lot 1081, the east line of a 3.571 acre tract conveyed to D&J Investments LLC by Official Record Volume 871, Page 57, Tracts 2&3, N.05°11'51"E., a distance of 434.97 feet to a 4" by 7' steel post found;
- Thence running along the north line of said 2.957 acre tract and the south line of a 4.000 acre tract conveyed to the Board of Commissioners of Logan County, Ohio by Official Record Volume 1407, Page 825 on the following three (3) courses and distances:
 1. S.46°00'11"E., a distance of 34.82 feet to a 4" by 7' steel post found;
 2. N.87°55'51"E., a distance of 56.74 feet to a 4" by 7' steel post found;
 3. S.50°06'24"E., a distance of 5.98 feet to a 5/8" iron pin set;
- Thence on a new division line, S.05°11'51"W., a distance of 416.79 feet to a 5/8" iron pin set in the north line of Water Street;
- Thence running along said north line, N.84°53'14"W., a distance of 88.33 feet to the Point of Beginning;
- Containing 0.850 acre, more or less and being subject to all legal highways, rights-of-way, easements, restrictions, covenants, and/or conditions of record.

The above description and bearing system is based on a survey prepared by Michael L. Howbert, Registered Professional Surveyor No. 7959, in March of 2023. The basis of bearing is based on Ohio North State Plane Grid, NAD 83, Adjustment 2011 with the north line of Water Street bearing: N.84°53'14"W .

Michael L. Howbert, P.S.



INDEXED ON MAP
3576


3-31-2023



**Description
For
0.623 Acre
Tract 2**

- Situated in Section 34, Town 4, Range 14, City of Bellefontaine, Lake Township, Logan County, Ohio, being part of a 2.957 acre tract heretofore conveyed to PRO Development, LLC by Official Record Volume 1403, Page 5665 of said County Deed Records and being more particularly described as follows;
- Commencing at the intersection of the north right-of-way line of Water Street (width varies) with the east line of Lot 1081 of Garvins Addition (Plat Cabinet A, Slide 15), being a 5/8" iron pin found;
- Thence running along said north line, S.84°53'14"E., a distance of 88.33 feet to a 5/8' iron pin set, being the *Principal Point of Beginning*;
- Thence on a new division line, N.05°11'51"E., a distance of 416.79 feet to a 5/8" iron pin set in the north line of said 2.957 acre tract and the south line of a 4.000 acre tract conveyed to the Board of Commissioners of Logan County, Ohio by Official Record Volume 1407, Page 825;
- Thence running along the north line of said 2.957 acre tract and the south line of said 4.000 acre tract, S.50°06'24"E., a distance of 84.05 feet to a 5/8" iron pin set;
- Thence on a new division line, S.05°11'51"W., a distance of 368.85 feet to a 5/8" iron pin set in the north line of Water Street
- Thence running along said north line, N.84°53'14"W., a distance of 69.10 feet to the Point of Beginning;
- Containing 0.623 acre, more or less and being subject to all legal highways, rights-of-way, easements, restrictions, covenants, and/or conditions of record.

The above description and bearing system is based on a survey prepared by Michael L. Howbert, Registered Professional Surveyor No. 7959, in March of 2023. The basis of bearing is based on Ohio North State Plane Grid, NAD 83, Adjustment 2011 with the north line of Water Street bearing: N.84°53'14"W .


Michael L. Howbert, P.S.




INDEXED ON MAP
3576



**Description
For
0.546 Acre
Tract 3**

- Situated in Section 34, Town 4, Range 14, City of Bellefontaine, Lake Township, Logan County, Ohio, being part of a 2.957 acre tract heretofore conveyed to PRO Development, LLC by Official Record Volume 1403, Page 5665 of said County Deed Records and being more particularly described as follows;
- Commencing at the intersection of the north right-of-way line of Water Street (width varies) with the east line of Lot 1081 of Garvins Addition (Plat Cabinet A, Slide 15), being a 5/8" iron pin found;
- Thence running along said north line, S.84°53'14"E., a distance of 157.43 feet to a 5/8" iron pin set, being the *Principal Point of Beginning*;
- Thence on a new division line, N.05°11'51"E., a distance of 368.85 feet to a 5/8" iron pin set in the north line of said 2.957 acre tract and the south line of a 4.000 acre tract conveyed to the Board of Commissioners of Logan County, Ohio by Official Record Volume 1407, Page 825;
- Thence running along the north line of said 2.957 acre tract and the south line of said 4.000 acre tract, S.50°06'24"E., a distance of 83.83 feet to a 5/8" iron pin set;
- Thence on a new division line, S.05°11'51"W., a distance of 321.03 feet to a 5/8" iron pin set in the north line of Water Street
- Thence running along said north line, N.84°53'14"W., a distance of 68.92 feet to the Point of Beginning;
- Containing 0.546 acre, more or less and being subject to all legal highways, rights-of-way, easements, restrictions, covenants, and/or conditions of record.

The above description and bearing system is based on a survey prepared by Michael L. Howbert, Registered Professional Surveyor No. 7959, in March of 2023. The basis of bearing is based on Ohio North State Plane Grid, NAD 83, Adjustment 2011 with the north line of Water Street bearing: N.84°53'14"W .


Michael L. Howbert, P.S.



INDEXED ON MAP
3576

3-31-2023


 APPROVED

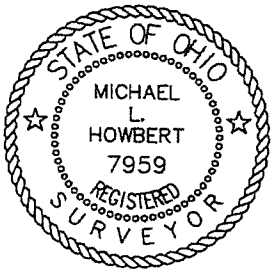


**Description
For
0.900 Acre
Tract 4**

- Situated in Section 34, Town 4, Range 14, City of Bellefontaine, Lake Township, Logan County, Ohio, being part of a 2.957 acre tract heretofore conveyed to PRO Development, LLC by Official Record Volume 1403, Page 5665 of said County Deed Records and being more particularly described as follows;
- Commencing at the intersection of the north right-of-way line of Water Street (width varies) with the east line of Lot 1081 of Garvins Addition (Plat Cabinet A, Slide 15), being a 5/8" iron pin found;
- Thence running along said north line, S.84°53'14"E., a distance of 226.35 feet to a 5/8' iron pin set, being the *Principal Point of Beginning*;
- Thence on a new division line, N.05°11'51"E., a distance of 321.03 feet to a 5/8" iron pin set in the north line of said 2.957 acre tract and the south line of a 4.000 acre tract conveyed to the Board of Commissioners of Logan County, Ohio by Official Record Volume 1407, Page 825;
- Thence running along the north line of said 2.957 acre tract, the south line of said 4.000 acre tract and the south line of a 3.047 acre tract conveyed to Axis Corporation by Official Record Volume 86, Page 362, S.50°06'24"E., a distance of 177.84 feet to a 5/8" iron pin found at the northeast corner of said 2.957 acre tract;
- Thence on the east line of said 2.957 acre tract and the west line of said 3.047 acre tract, S.05°54'51"W., a distance of 219.61 feet to a 1" iron pipe found in the north line of Water Street
- Thence running along said north line, N.84°53'14"W., a distance of 143.47 feet to the Point of Beginning;
- Containing 0.900 acre, more or less and being subject to all legal highways, rights-of-way, easements, restrictions, covenants, and/or conditions of record.

The above description and bearing system is based on a survey prepared by Michael L. Howbert, Registered Professional Surveyor No. 7959, in March of 2023. The basis of bearing is based on Ohio North State Plane Grid, NAD 83, Adjustment 2011 with the north line of Water Street bearing: N.84°53'14"W .


Michael L. Howbert, P.S.



INDEXED ON MAP
3574

3-31-2023

APPROVED

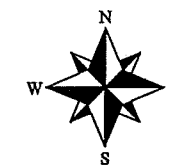
PLAT OF SURVEY FOR PRO DEVELOPMENT

SITUATED IN:
SECTION 34,
TOWN 4, RANGE 14.,
BETWEEN THE MIAMI RIVERS SURVEY
CITY OF BELLEFONTAINE,
LAKE TOWNSHIP,
LOGAN COUNTY, OHIO

D&J INVESTMENTS LLC
O.R. 871, PG. 57
TRACTS 2&3
3.571 ACRES

AXIS CORPORATION
O.R. 86, PG. 362
3.047 ACRES

PRO DEVELOPMENT LLC
O.R. 1403, PG. 5665
2.957 ACRES

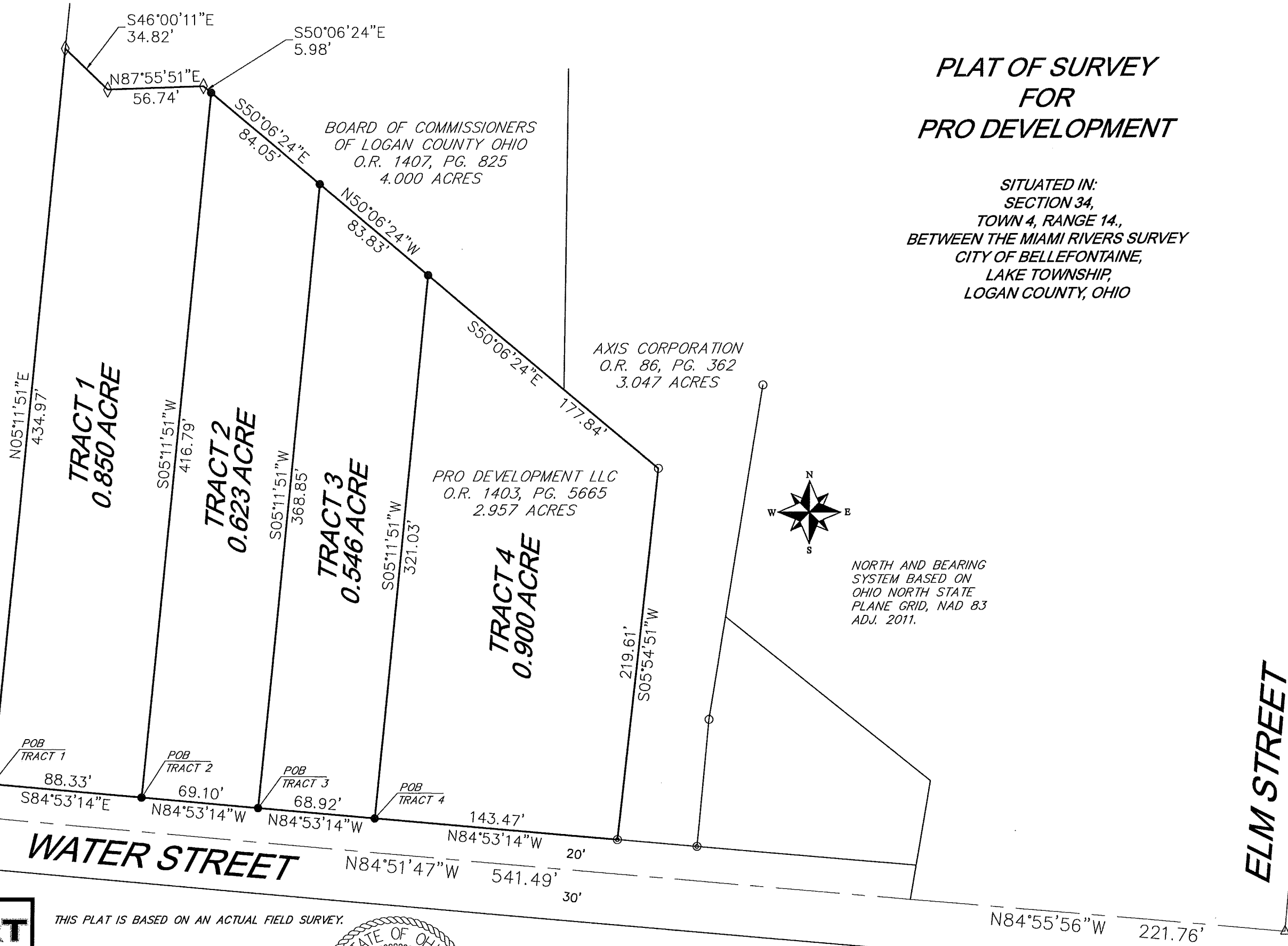


NORTH AND BEARING
SYSTEM BASED ON
OHIO NORTH STATE
PLANE GRID, NAD 83
ADJ. 2011.

LEGEND:

- △ 3/4" IRON PIN FOUND
- ⊙ 1-1/2" IRON ROD FOUND
- ◇ 4" X 7" POST FOUND
- 5/8" IRON PIN FOUND
- ⊗ 1" IRON PIPE FOUND
- 5/8" IRON PIN W/ CAP SET

GARVINS ADDITION
PLAT CAB. A, SLIDE 15
LOT 1081
D&J INVESTMENTS LLC
O.R. 871, PG. 57
TRACT 4



WATER STREET

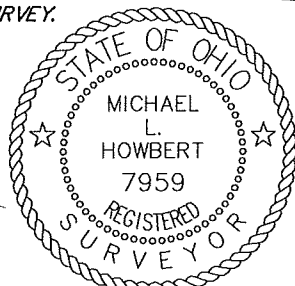
ELM STREET

HOWBERT SURVEYING LLC
8477 MERICLE ROAD
FORT JENNINGS, OHIO 45844
419-863-0289

DATE: 3/31/23	REV.:
CLIENT: ABORGAST	SCALE: 1" = 60'
JOB #: 105-03-23	CHK:

THIS PLAT IS BASED ON AN ACTUAL FIELD SURVEY.

Michael L. Howbert
MICHAEL L. HOWBERT
REGISTERED PROFESSIONAL
SURVEYOR NO. 7959 IN OHIO
MARCH 31, 2023



NOTES:
FOUND MONUMENTATION IN GOOD CONDITION
UNLESS OTHERWISE NOTED.
DATA SOURCES INCLUDE DOCUMENTS CITED.
A TITLE SEARCH IS RECOMMENDED TO DETERMINE
EASEMENTS, RESTRICTIONS, AND/OR OTHER
ENCUMBRANCES AFFECTING THE PROPERTY
SHOWN HEREON.

INDEXED ON MAP
3570

