

M.H. 328
Fl. Cover 40.7
Fl. Invert 34.4

SANDUSKY AVENUE 60'

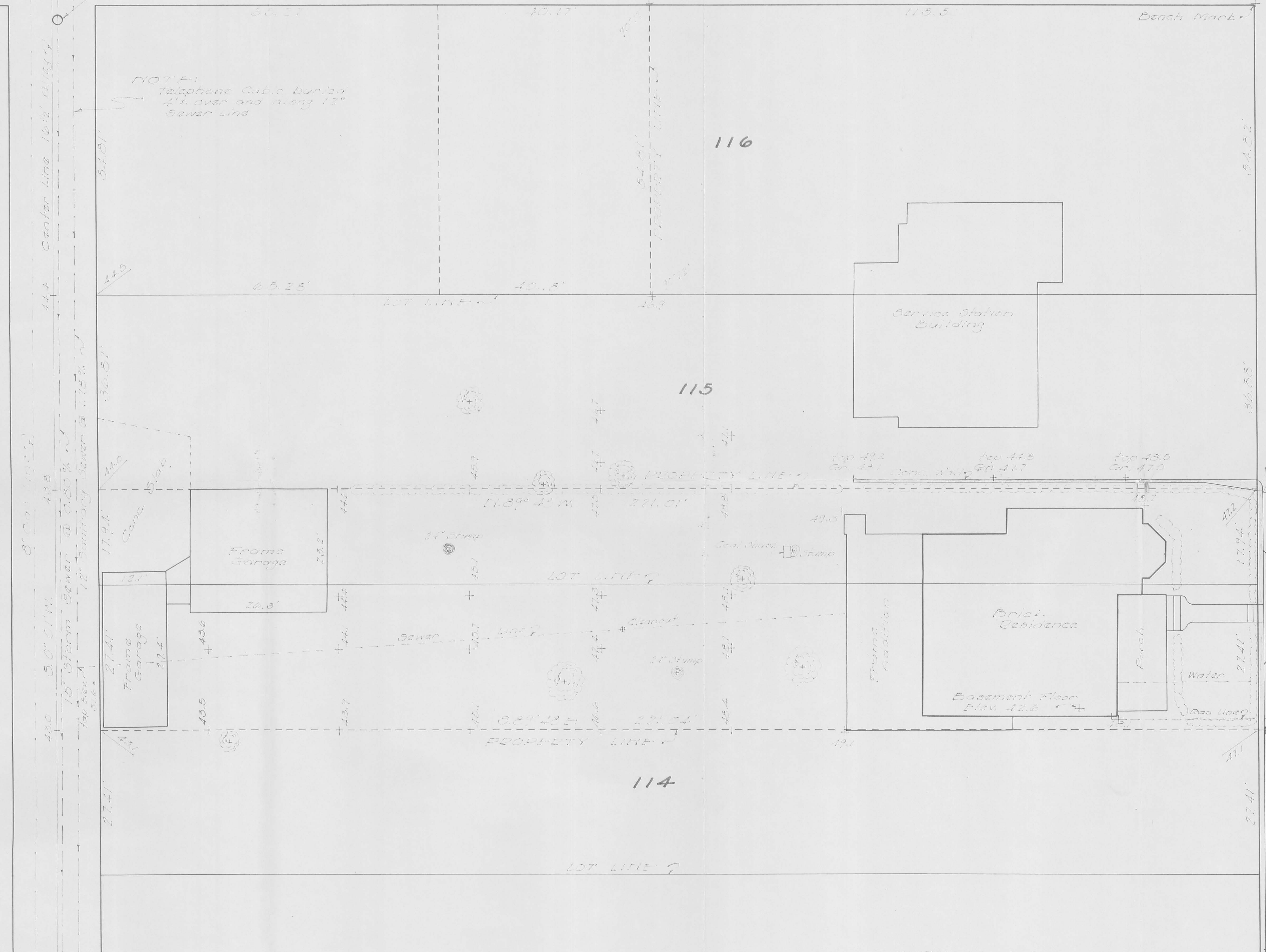
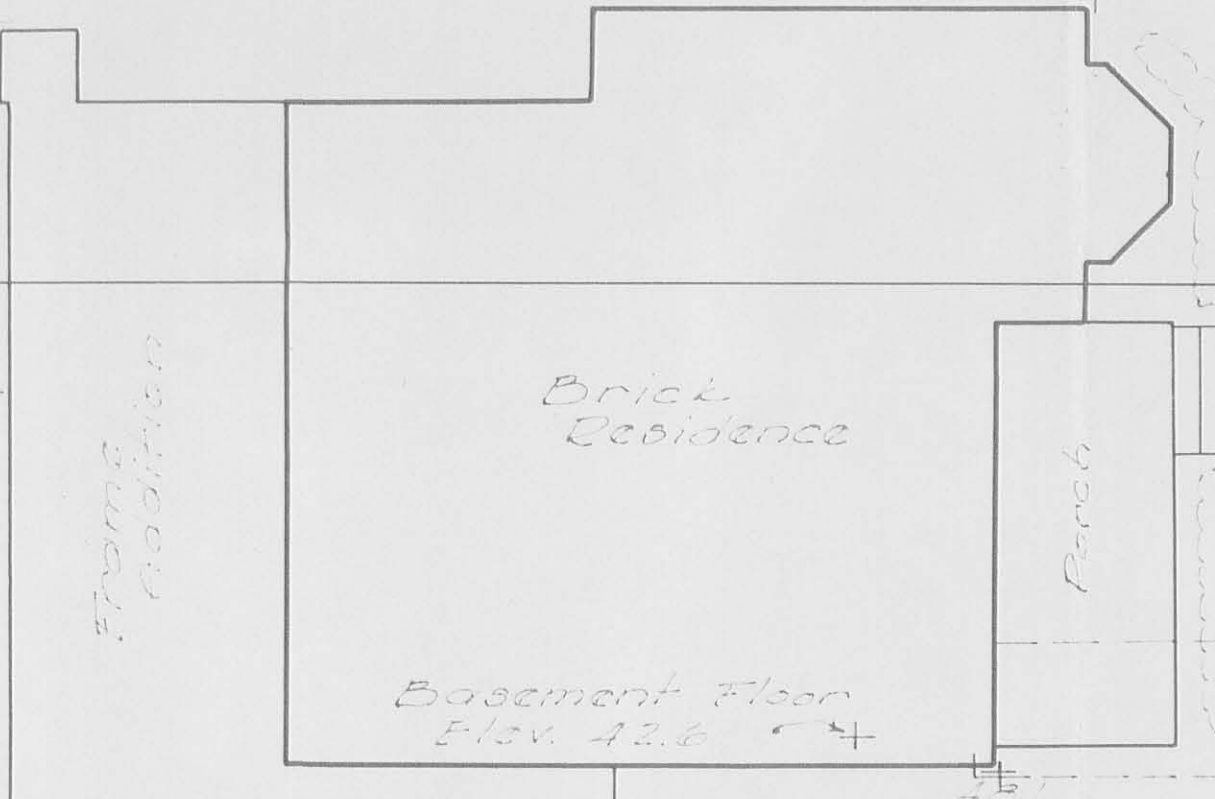
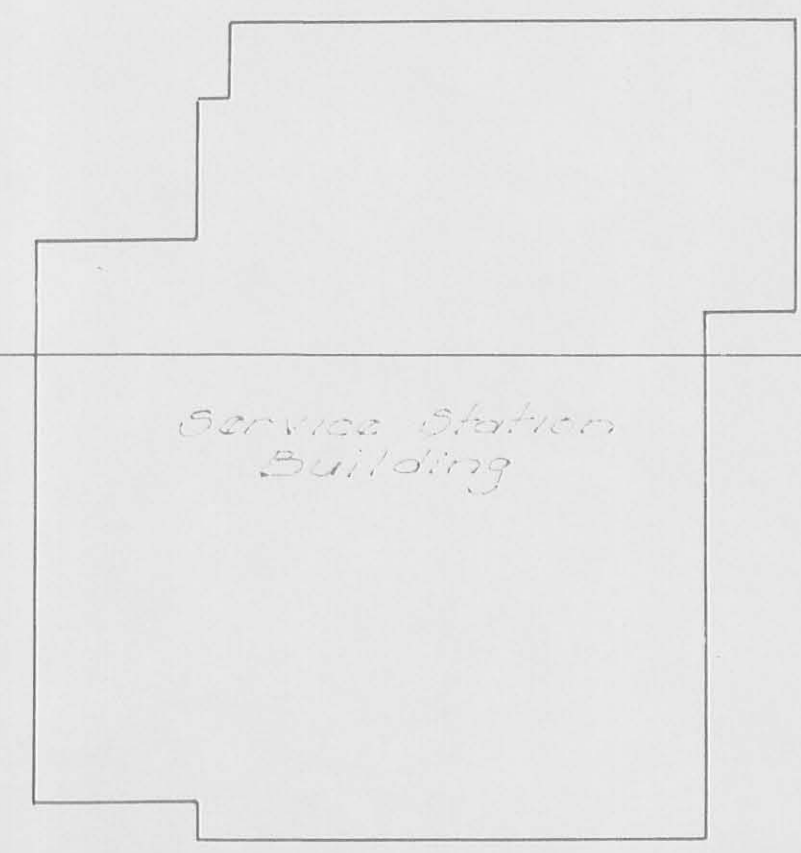
Storm Sewer Mt.
Fl. Cover 44.7
Fl. Invert 38.7

NOTE:
Telephone Cable buried
4" over and along 12"
sewer line

116

115

114



SURVEY OF
PART LOTS 114-115-116
BELLEFONTAINE, OHIO
FOR
THE STANDARD OIL Co. OF OHIO
1964
SCALE 1" = 10'

BENCH MARK
U.S.G.S. DATUM USED.
BM - Christed 2 1/2" x 1 1/2" corner of Lot 116,
(top corner), top of sand base for
14' x 14' pole. Elev. 424.71
NOTE: For U.S.G.S. Datum, add 60.00 feet
to grid elevations.

3726 IP

INDEXED ON MAP
Dan L. Dodson
Lsg. Surveyor 4270
Bellefontaine, Ohio
number 1964

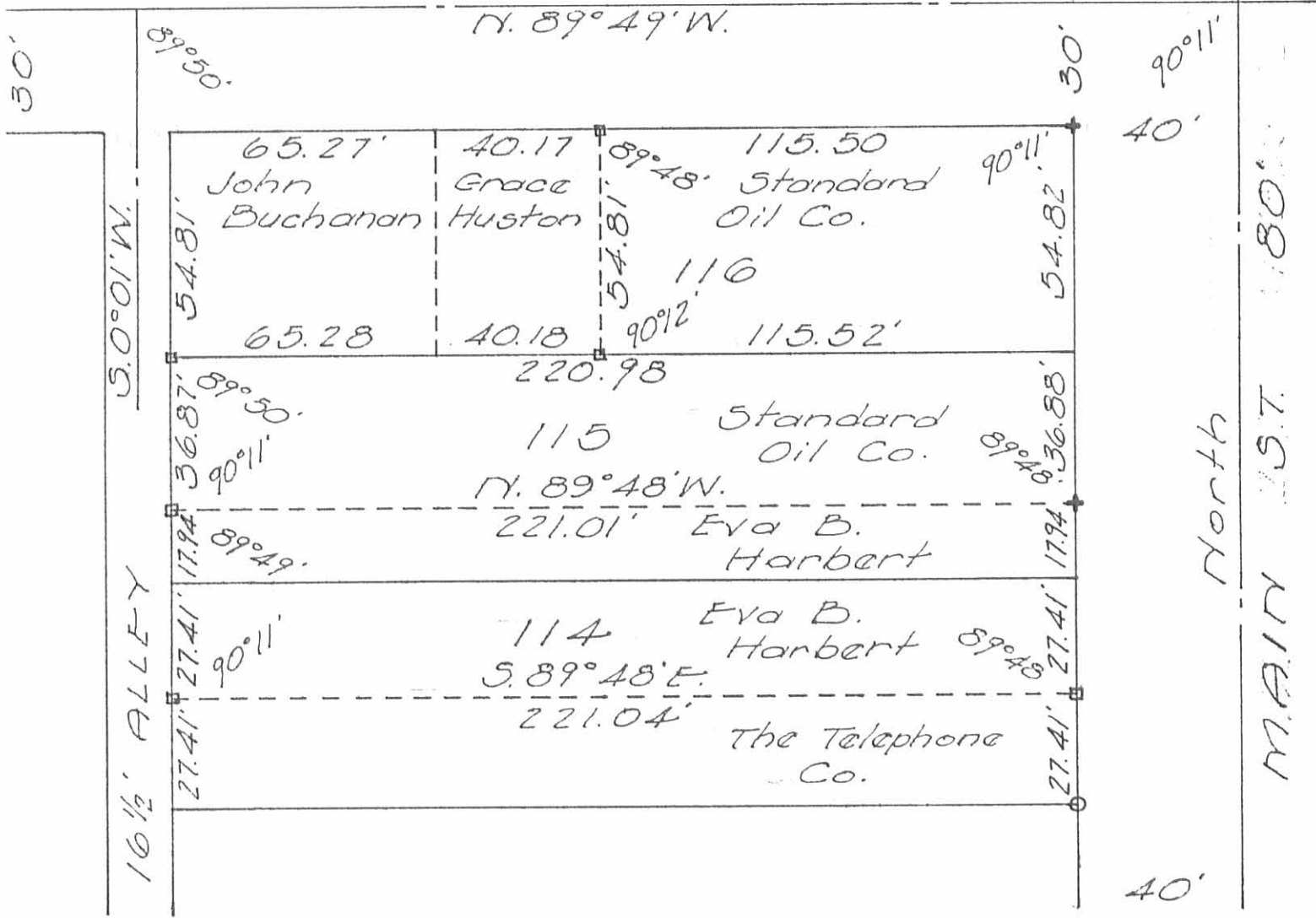
SURVEY OF
PART LOTS 115 AND 114
BELLEFONTAINE, OHIO
FOR
THE STANDARD OIL COMPANY
(EVA B. HARBERT PROPERTY)

The following described real estate situated in the City of Bellefontaine, Lake Township, Logan County, Ohio and being part of lots 115 and 114 of the original Town of Bellefontaine and more particularly described as follows:

Beginning at an iron bar in the west line of Main Street, 27.41 feet north of the southeast corner of lot 114; thence N. 89°48' W. 221.04 feet to an iron bar in the west line of said lot 114 and in the east line of a 16 1/2 foot alley, 27.41 feet N. 0°01' E. of the southwest corner of said lot 114; thence with the east line of said alley N. 0°01' E. 45.35 feet to an iron bar, passing the northwest corner of lot 114 at 27.41 feet; thence S. 89°48' E. 221.01 feet to a chiseled cross in the west line of said Main Street; thence with said west line, South 45.35 feet to the place of beginning, passing the southwest ^{East} corner of lot 115 at 17.94 feet.

INDEXED ON MAP
3726 20

SANDUSKY AVE. 60'



SURVEY OF
 PART LOTS 116-115-114
 BELLEFONTAINE, OHIO
 FOR
 THE STANDARD OIL CO.
 AUGUST 8, 1964
 SCALE 1" = 40'

- = 1/2" # Bar Set
- = 3/4" Pipe Found
- + = Chiseled Cross

INDEXED ON MAP
 37262P

Dan L. Dodson
 Dan L. Dodson
 Reg. Surveyor 4270
 Bellefontaine, Ohio

