

BELLE-AID ESTATES Nos. 1-2-3
NOT PART OF THIS PLAT

KNOW ALL MEN BY THESE PRESENTS that Robert M. Abraham and Ruth A. Abraham, proprietors of the land indicated on the accompanying plat, have authorized the platting thereof and do hereby dedicate the streets to the public use forever.

Ruth Eleanor Hesse

Richard H. Abraham
Witness

Ruth A. Abraham
Proprietors

Be it remembered that on this the 11th day of April in the year of our Lord One Thousand Nine Hundred and Sixty-six, before me, a Notary Public in and for said County, personally came Robert M. Abraham and Ruth A. Abraham, grantors in the foregoing dedication, and acknowledged the signing thereof to be their free and voluntary act and deed.

Richard H. Abraham
Notary Public

SEPTEMBER 6, 1967
My Commission Expires

Approved by the Planning Commission this 12th day of April, 1966.

Charles McHenry Jr.
Chairman
Planning Commission

The accompanying Plat was adopted by Ordinance No. 3131 as an addition to the City of Bellefontaine, Ohio at a regular meeting of the City Council on the 3rd day of May, 1966.

Rodney H. Hughes
Mayor

Paul E. Watkins
Clerk
Robert J. Wolstein Jr.
President of Council

The within lots transferred this 4th day of MAY, 1966

Chas H. Chamberlain
Auditor of Logan County

Received for record at 9:15 O'clock A.M. on the 11th day of May, 1966.
Recorded in Plat Book E, Volume 6, Page 6.

Ruth Royer
Recorder of Logan County

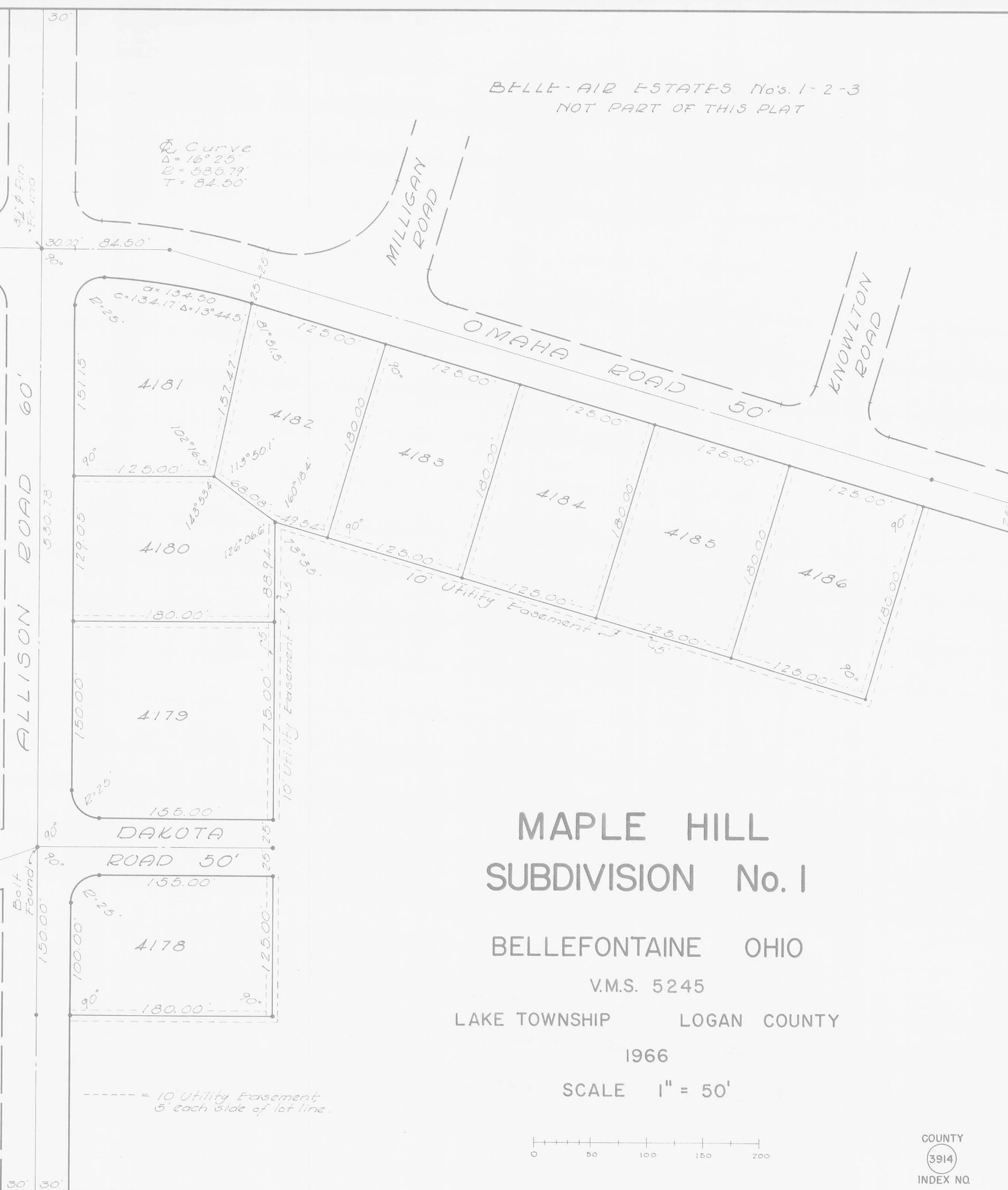
The accompanying plat represents a subdivision of land in Virginia Military Survey 5245, City of Bellefontaine, Lake Township, Logan County, Ohio. The tract has an area of 4.82 acres in lots and 1.14 acres in streets making a total of 5.96 acres of which 3.72 acres are out of a 11.41 acre tract and 2.24 acres are out of a 20.63 acre tract.
All measurements are in feet and decimals of a foot and are corrected to 20°C.
0 = 5/8" Bar unless otherwise indicated.

I hereby certify that the accompanying plat is a correct representation of MAPLE HILL SUBDIVISION No. 1

Dan L. Dodson
Dan L. Dodson
Reg. Surveyor 4270
Bellefontaine, Ohio

Final acceptance and approval by Ordinance No. _____ Dated _____

City Engineer
Bellefontaine, Ohio



MAPLE HILL
SUBDIVISION No. 1

BELLEFONTAINE OHIO

V.M.S. 5245

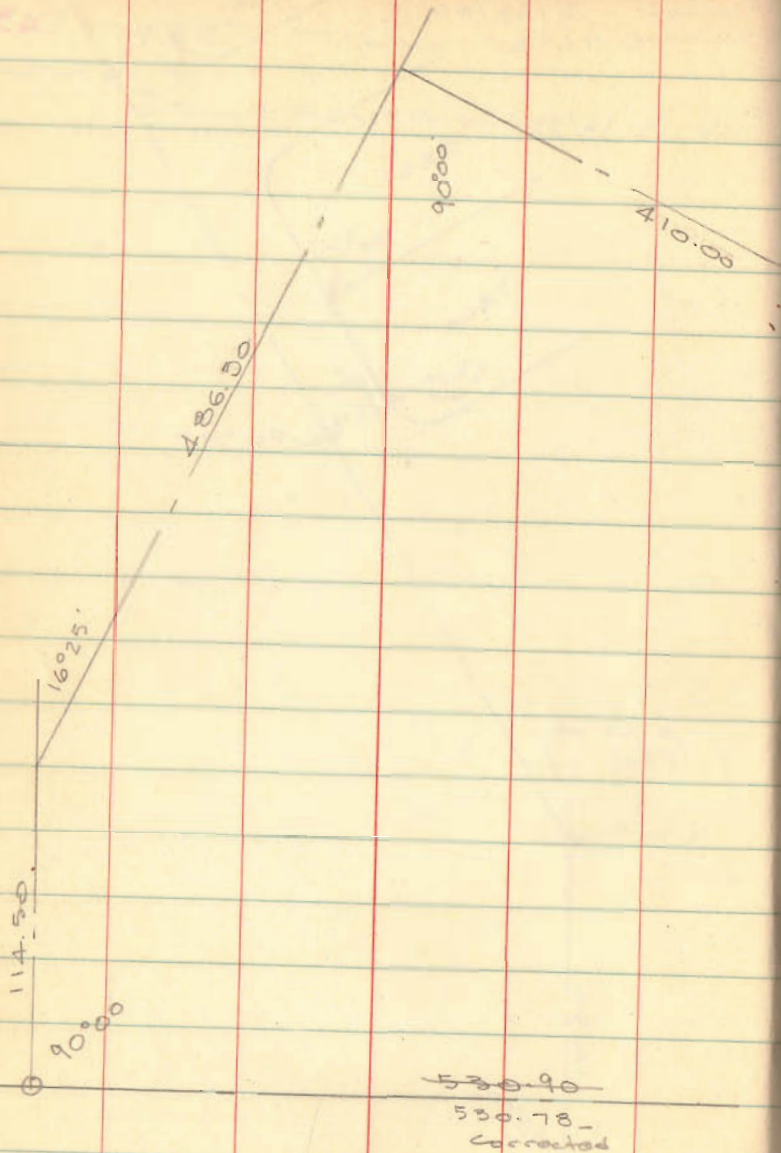
LAKE TOWNSHIP LOGAN COUNTY

1966

SCALE 1" = 50'



COUNTY
3914
INDEX NO.

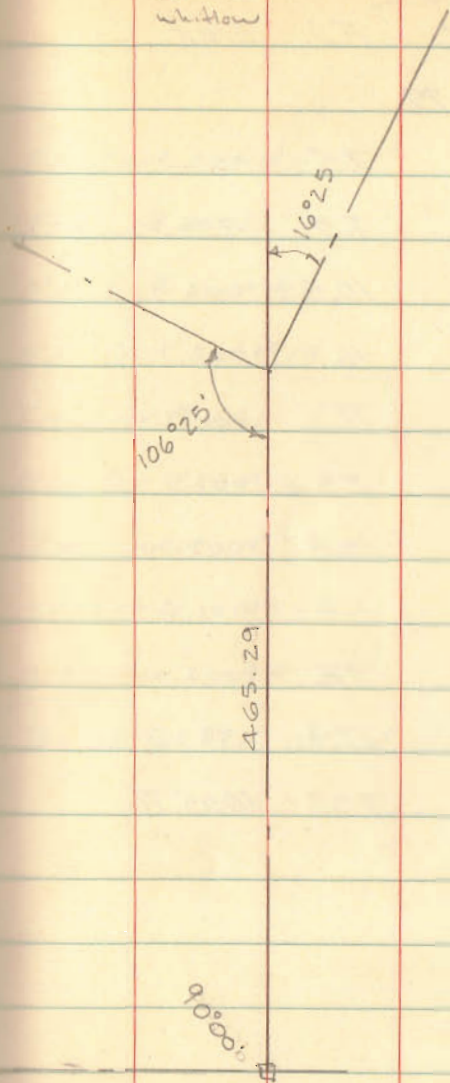


INDEXED ON MAP
3914

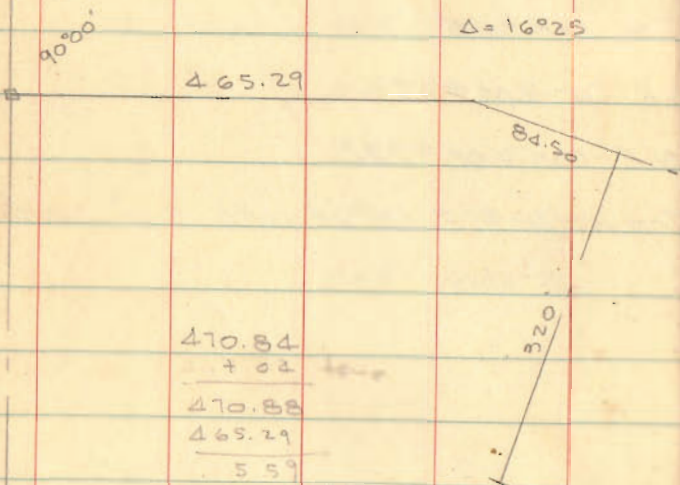
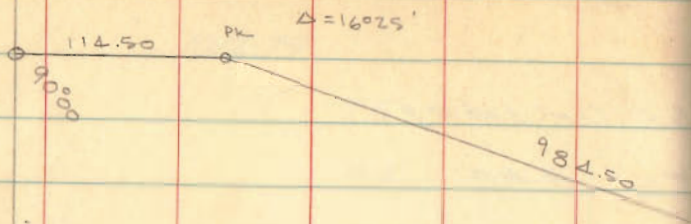
Dixon
Whitlow

3/26/66
30°

44



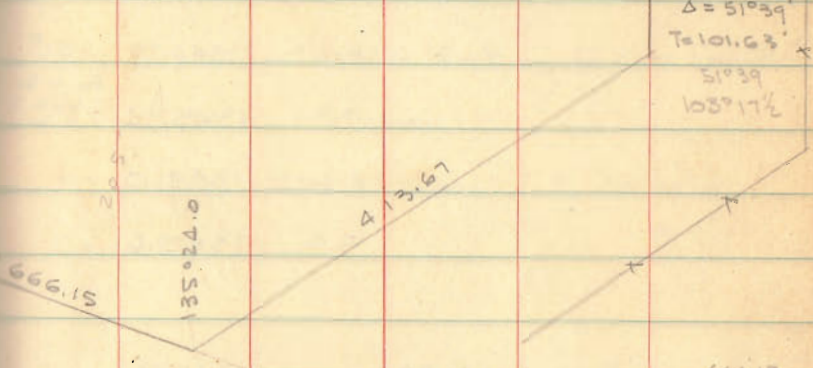
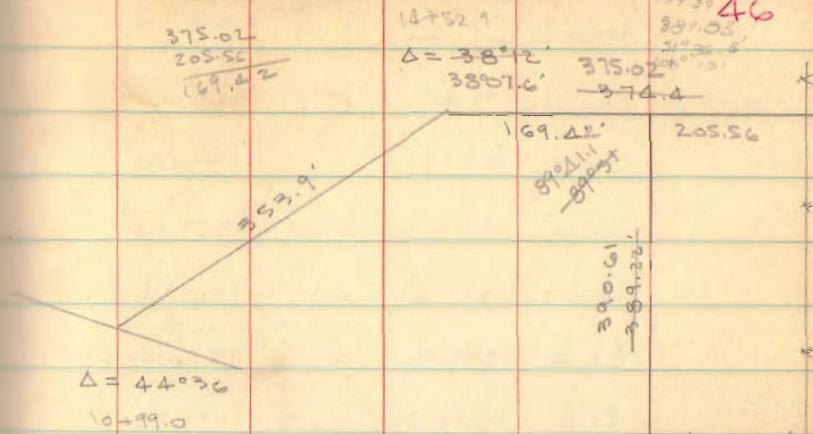
MAPLE HILL PRELIM.
STREET CENTER LINES



470.84
+ 02
470.88
465.29
5.59

INDEXED ON MAP
3914

Bm - TT-6-63 Elev. 1334.34



114.50
984.50
1099.00
352.9
1452.9
169.4
1622.3

507.47
465.29
42.18
465.29
88.50
549.79

622.47
582.07
40.40
413.67
102.53
311.14
310.81

179.60
44.36
135.24

89.48
177.20
397.03
375.02
374.4

390.6
19.0
22.22

Δ = 51°39'
T = 101.63'
51°39'
103°17.2'

666.15
82.08
582.07
666.15
622.07
43.08

6.66
005
03330

138