

DON M. HILLIKER  
TO  
THE CITY OF BELLEFONTAINE  
V.M.S. 2873  
AUGUST 27, 1966

The following described real estate situated in Lake Township, Logan County, Ohio and being part of Virginia Military Survey 2873 and more particularly described as follows:

Beginning at an iron bar in the north line of Belle-Air Estates Inc. 27.18 acre tract, N.89° 24'W. 116.3 feet from the northeast corner of said tract, said iron bar also being a corner of Thelma Traul's land; thence with the north line of said 27.18 acre tract N.89° 24'W. 682.1 feet to a wood post; thence continuing with said north line S.89° 55'W. 760.7 feet to an iron bar; thence continuing with said north line and the north line of Deota Nogle's 1.11 acre tract N.43° 58'W. 381.4 feet to a spike in the center of Lake Township Road No. 246 at the northwest corner of said Nogle tract; thence with the centerline of said road N.50° 31'E. 20.52 feet to a spike at the southwest corner of Rosalind S. Yoesting's 1.00 acre tract; thence with said Yoesting's south line S.43° 58'E. 372.1 feet to an iron bar; thence continuing with said line and the south line of William H. Schrader's 7.09 acre tract N.89° 55'E. 753.6 feet to an iron bar at the southeast corner of said Schrader tract, said iron bar being N.4° 15'E. 20.52 feet from a wood post in the north line of said Belle-Air Estates Inc. 27.18 acre tract;

See Sheet 2

3983 1D-1

HILLIKER TO THE CITY OF BELLEFONTAINE  
SHEET 2

thence with said Schrader's east line N.4° 15'E. <sup>347.1</sup>~~367.6~~ feet to  
an iron bar in the south right of way line of U.S. Route No.33;  
thence with said south right of way line, being a curve to the  
right having a radius of 5569.58 feet, an arc distance of 704.1  
feet to an iron bar in the west line of said Thelma Traul's land;  
thence with said Traul's west line S.0° 46'E. 111.6 feet to the  
place of beginning.

Containing 4.33 acres more or less.

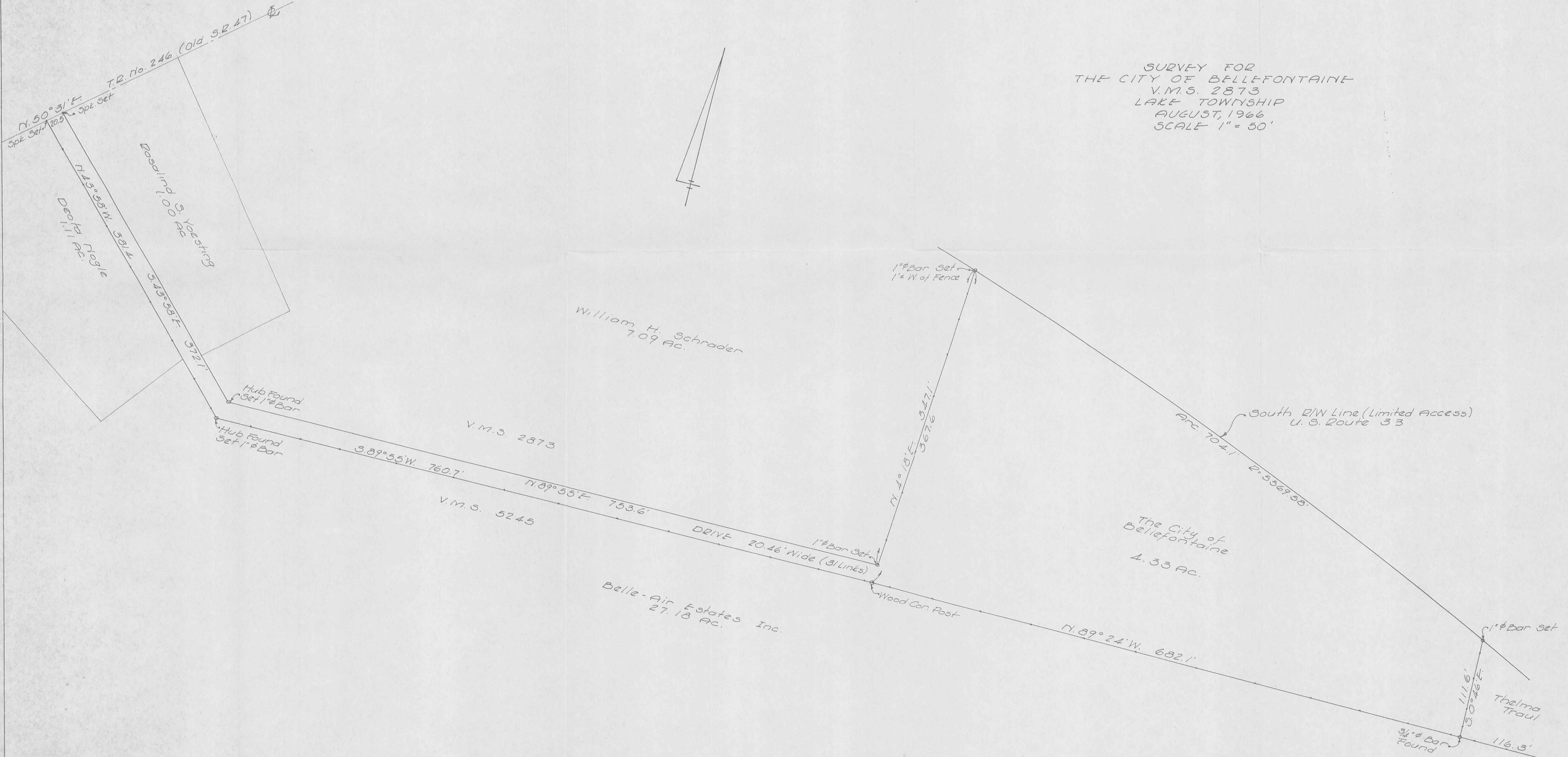
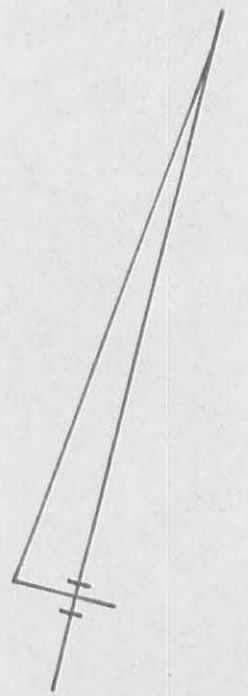
The above described tract being all of Don M. Hilliker's  
0.45 acre tract and 3.80 acres off the south end of said Hilliker's  
13.185 acre tract.

3983 1D-2

INDEXED ON MAP



SURVEY FOR  
 THE CITY OF BELLEFONTAINE  
 V.M.S. 2873  
 LAKE TOWNSHIP  
 AUGUST, 1966  
 SCALE 1" = 50'

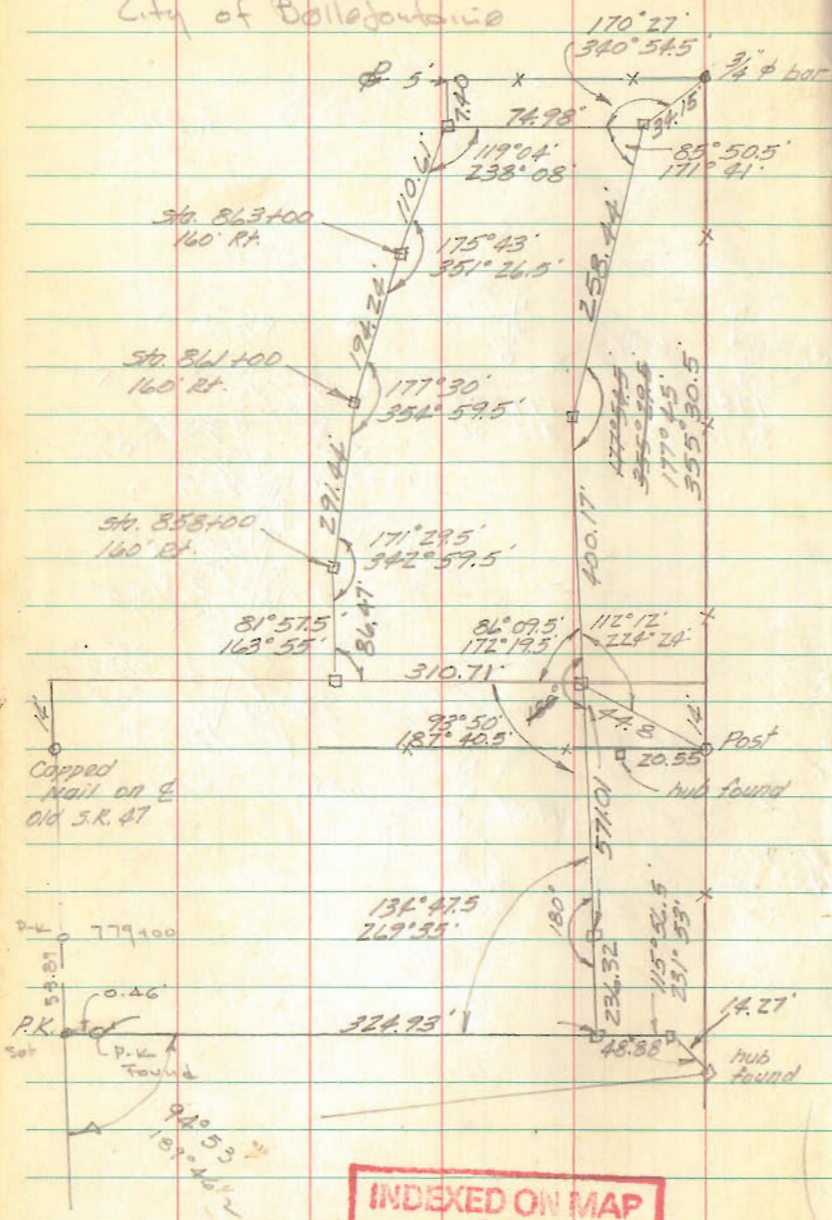


*Dan L. Dodson*  
 Dan L. Dodson  
 Reg. Surveyor 4270  
 Bellefontaine, Ohio

3983 1P  
 INDEXED ON MAP



Water Tower Site  
City of Bellefontaine



INDEXED ON MAP  
3983