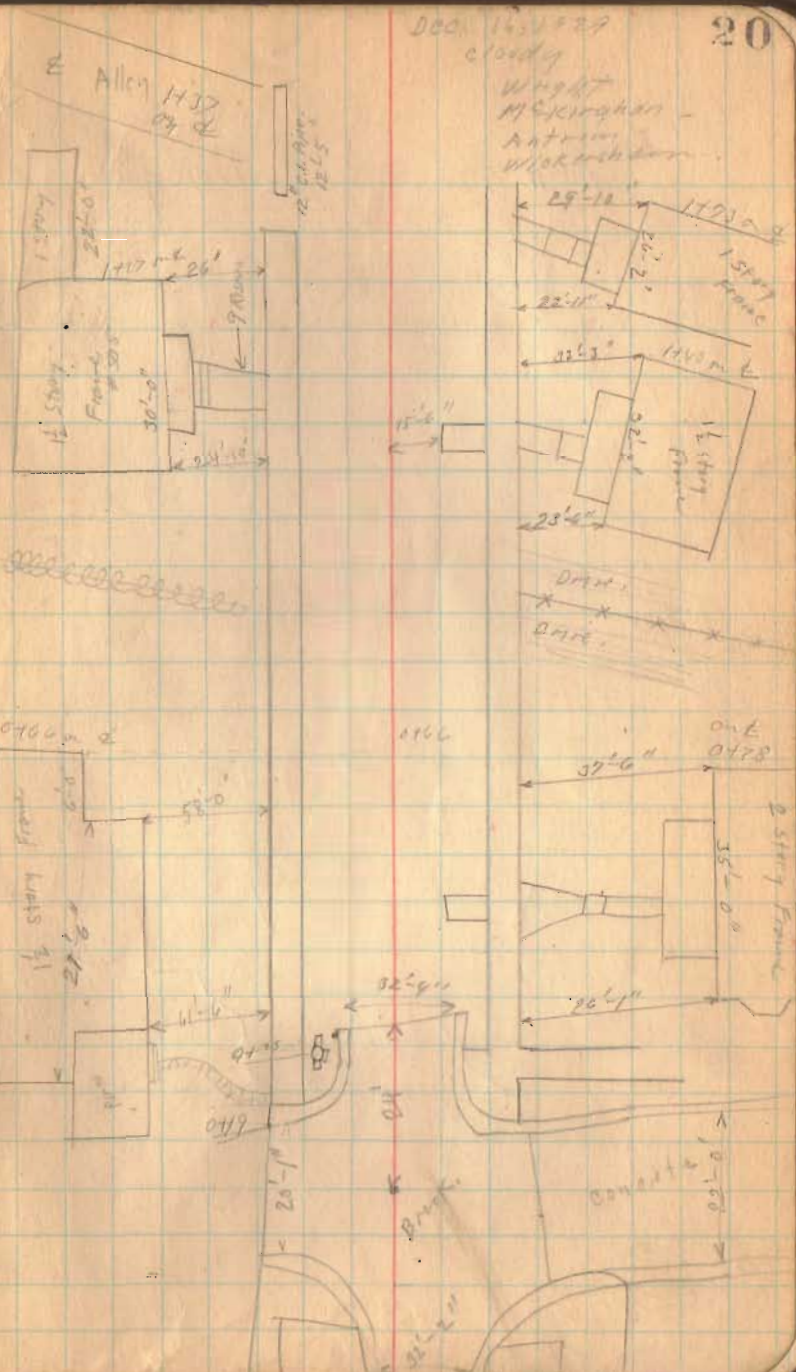


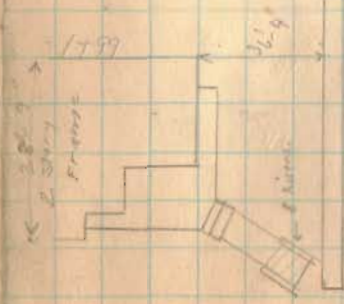
14H 225 Sandusky Ave

INDEXED ON MAP

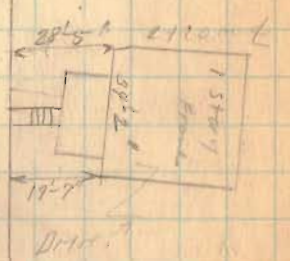
4430



10th St E. Sandway

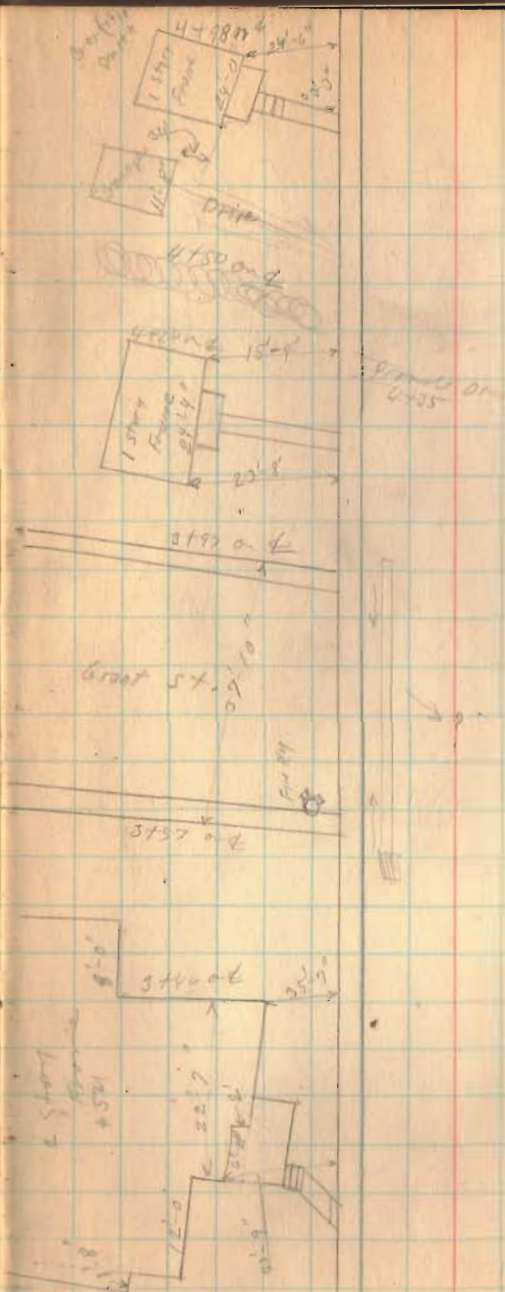


Grades
2114



10. H. 235. El. Sandusky

6700 de
Drive 100' 250'
South

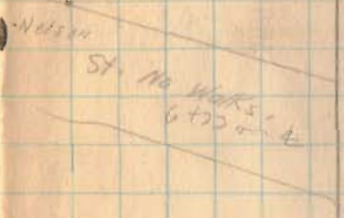


3197

1244. 175 E. Sandusky



14.6" x 12" Wx



28' x 7' 8.11' Wx



1074-235 E Sandusky



old
9707
Ally. P

9707
84912
0°-02'14"ft
Measure
with
center

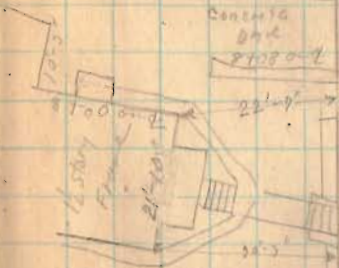
8456

8413 on E

Concrete

Drain

9708-7



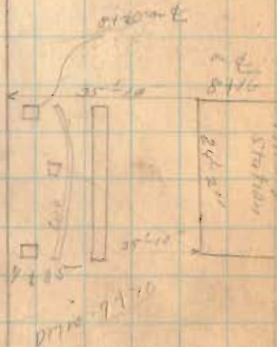
9750

155' of N 77'

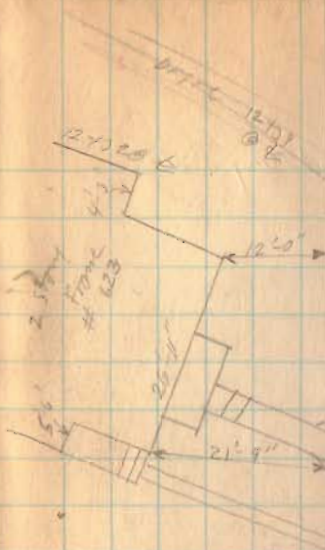


24

8476
E Hayes St.



104. 235 E. Sandusky



12120 @ L

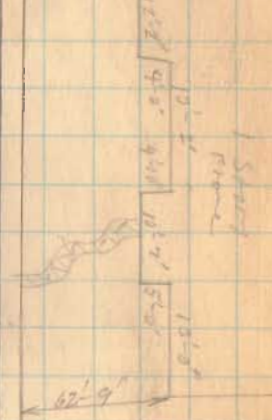
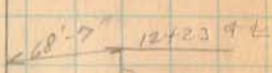
Land Lot
11723 @ E



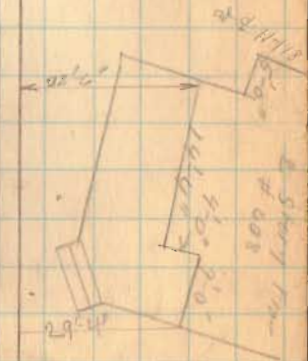
240
11747 @ L

11747 @ L

11747 @ L



11747 @ E

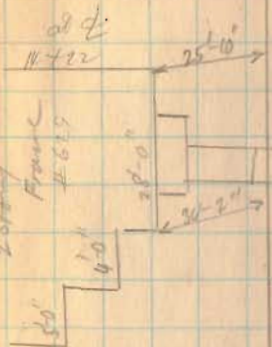


110 N. 735 E. Sandusky

Dec-17-1925
Warm Yes
Fog Yes
Windlight
M. K. Krohn
Ant
Microscop

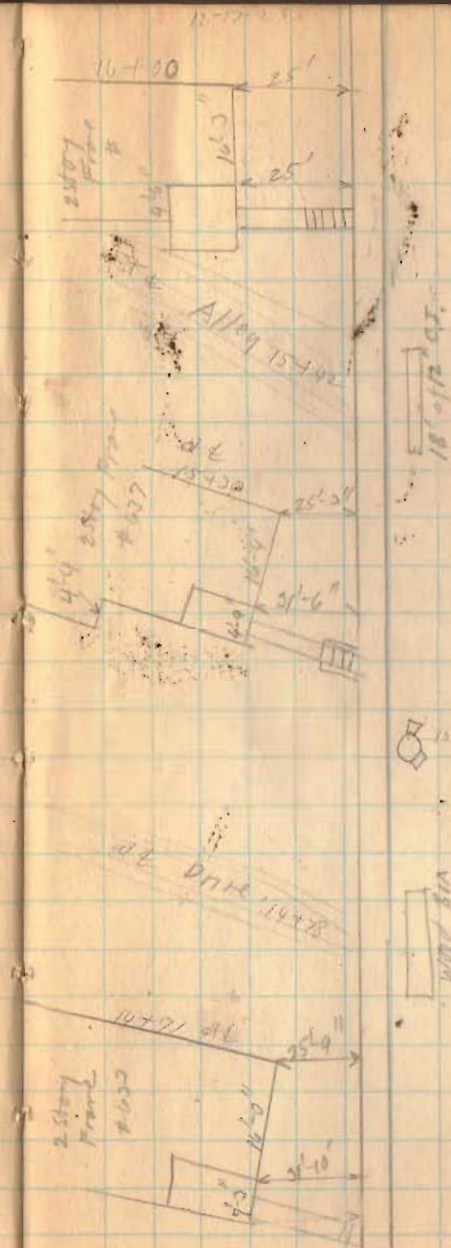
11-17-25

26

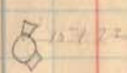
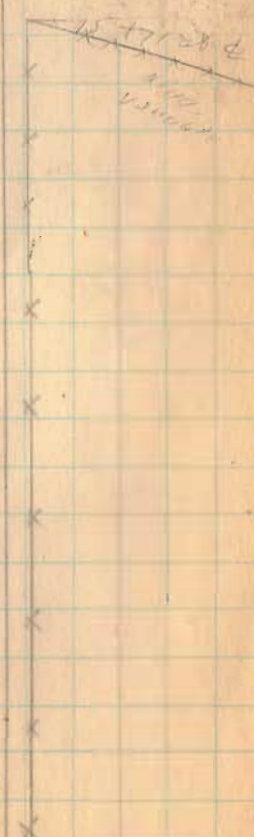


Area Available

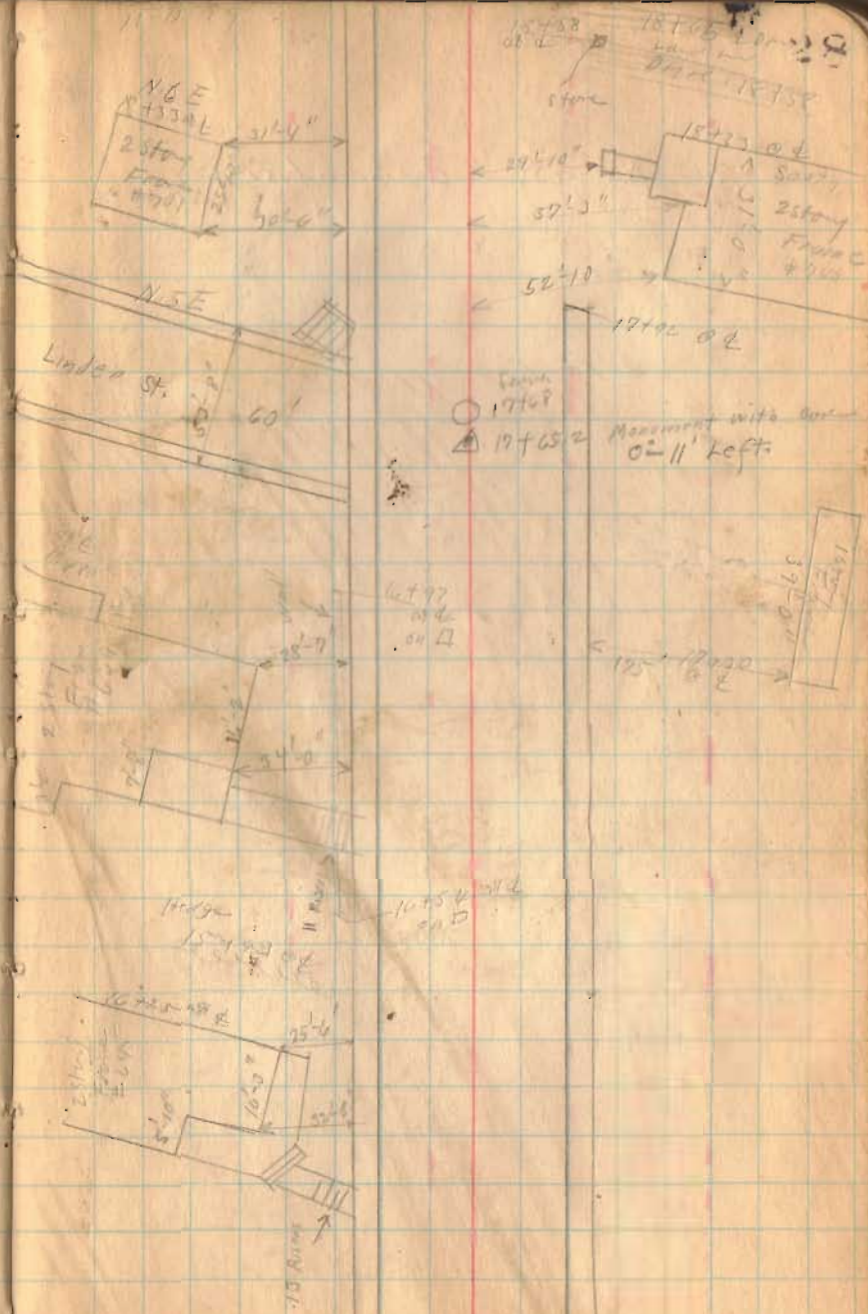
1-C.H. 235 E Sandvick



27
D-101
16+30
15430

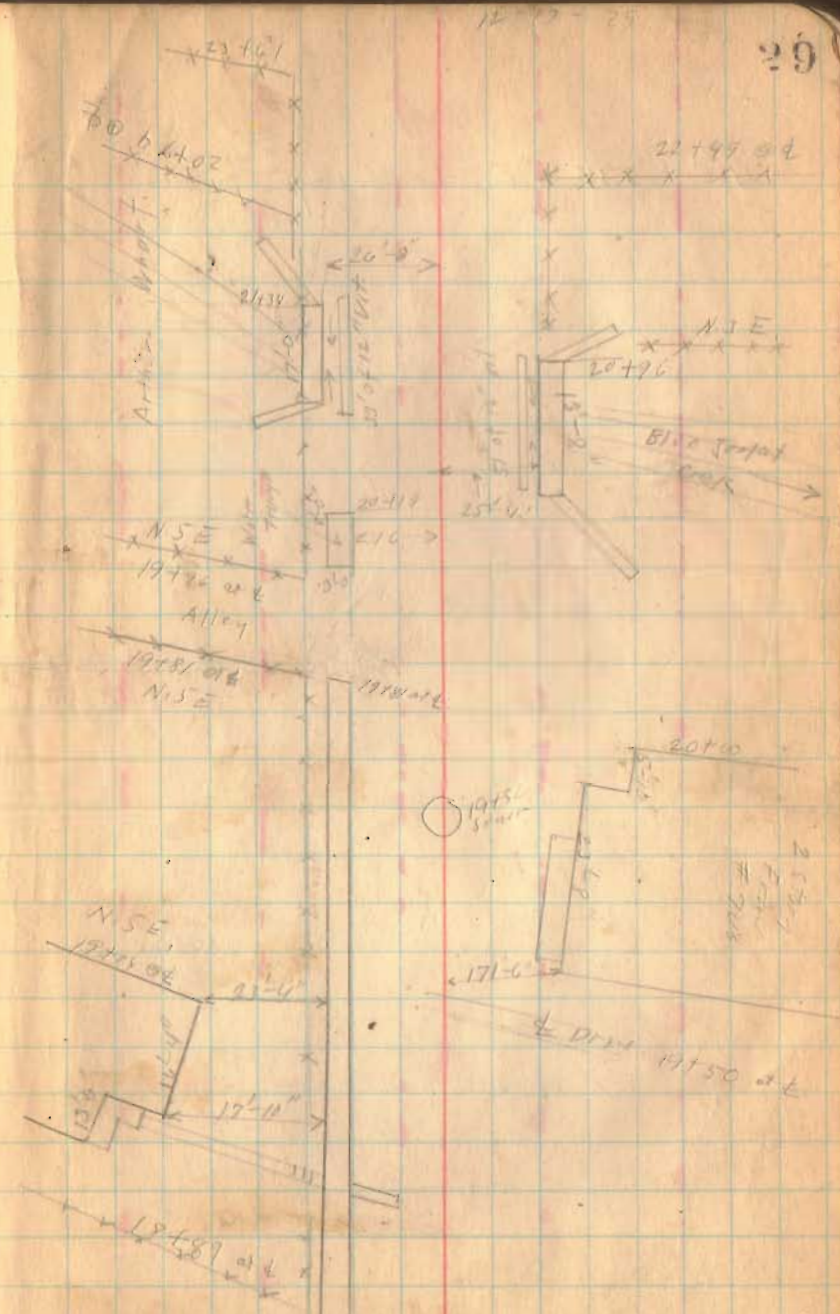


1st May 235 E. ...



12-17-25

110 N. 1st St. E. boundary



1/10 8 235 E. Sandusky

