

CARL S. CRONE PROPERTY SURVEY
March, 1969

The following described real estate situated in Lake Township, Logan County, Ohio and being part of Virginia Military Survey 2873 and more particularly described as follows:

Commencing at an iron bar in the centerline of Main Street, N. 17°16' E. 827.7 feet from an iron bar at the intersection of the centerline of Main Street with the centerline of Dowell Avenue, said point being in the north corporation line of the City of Bellefontaine; thence with said corporation line N. 75°01' W. 190.0 feet to an iron bar at an angle point in the south right-of-way line of U.S.R. 33, said iron bar being the northeast corner of the Standard Oil Company's 0.61 acre tract, said iron bar also being the beginning point of this description; thence with said corporation line and said Standard Oil Company's north line N. 75°01' W. 219.1 feet to an iron bar at the northwest corner of said tract; thence with said corporation line, the west line of said 0.61 acre tract, the Standard Oil Company's 1.07 acre tract and Clifford Bailey's 1.00 acre tract S. 17°26' W. 330.7 feet to an iron bar at the southwest corner of said Bailey's 1.00 acre tract, said iron bar also being the northwest corner of Bernard Pool's 0.88 acre tract; thence with said corporation line, the west line of said Bernard Pool, the Humble Construction Company's 0.65 acre tract and Mary F. Sours' 0.70 acre tract S. 2°18' W. 281.2 feet to an iron bar at the northeast

INDEXED ON MAP

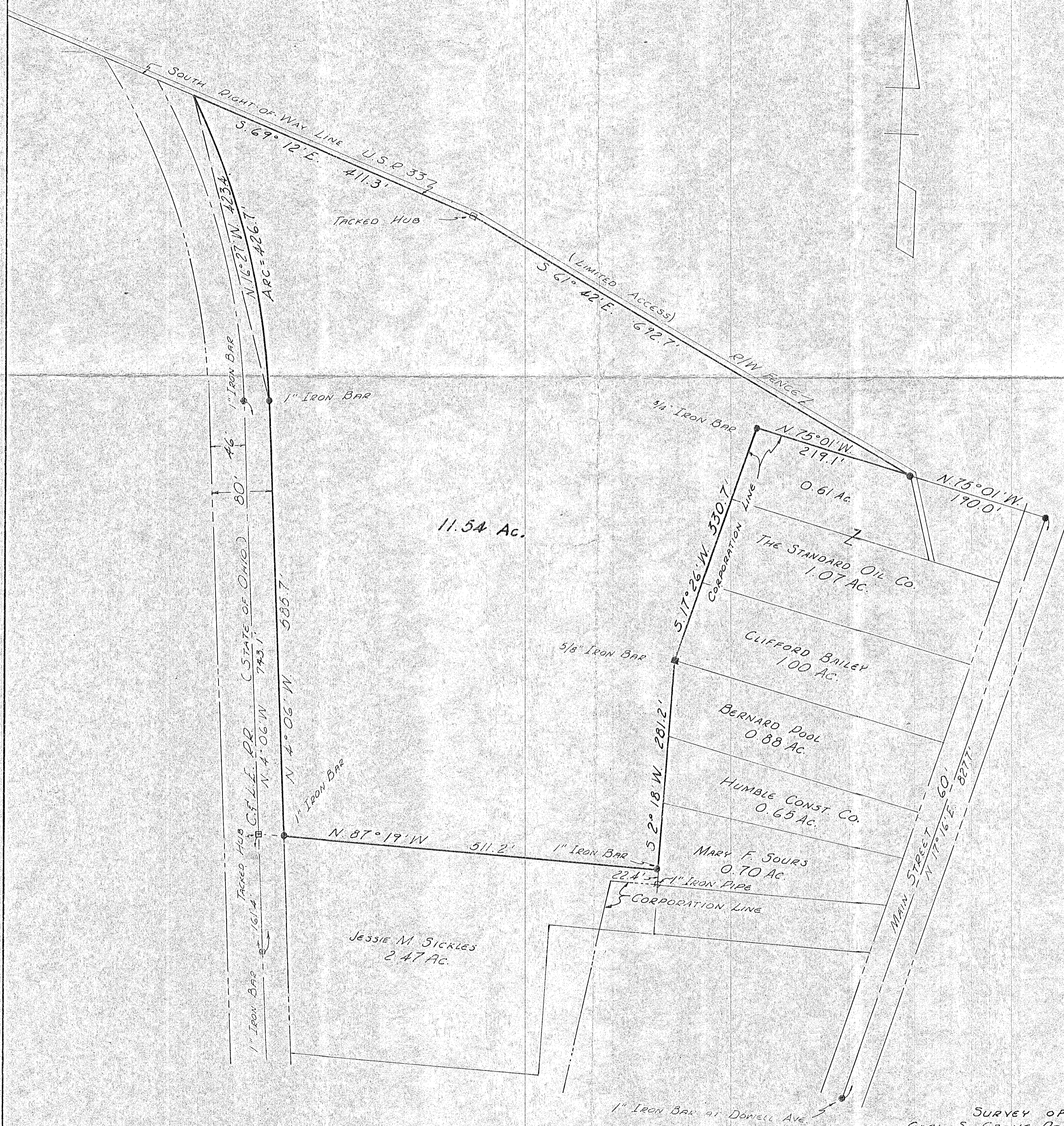
4479 1D-1

CRONE SURVEY (cont.)

corner of Jessie M. Sickles' 2.47 acre tract; thence with said Sickles' north line N. 87°19' W. 511.2 feet to an iron bar at the northwest corner of said tract and in the east right-of-way line of the C. and L.E. Railroad as shown on Logan County Engineer's Plan R-38; thence with said right-of-way line N. 4°06' W. 585.7 feet to an iron bar at the point-of-tangency of a 6°00' curve to the left, having a central angle of 24°42' ; thence with said curve an arc distance of 426.7, said arc having a chord bearing N. 16°27' W. 423.4 feet, to a point in the south right-of-way line of U.S.R. 33; thence with said right-of-way line S. 69°12' E. 411.3 feet to a tacked hub; thence with said south right-of-way line S. 61°42' E. 692.7 feet to the place of beginning.

Containing 11.54 acres, more or less.

INDEXED ON MAP
4479 1D-2



SURVEY OF
 CARL S. CRONE PROPERTY
 MARCH, 1969
 V.M.S. 2873
 LAKE TOWNSHIP
 LOGAN COUNTY, OHIO
 SCALE 1" = 100'

COUNTY
 4479
 INDEX NO.

SURVEYED AND DRAWN BY
 LESLIE H. GEESLIN
 REGISTERED SURVEYOR #5248

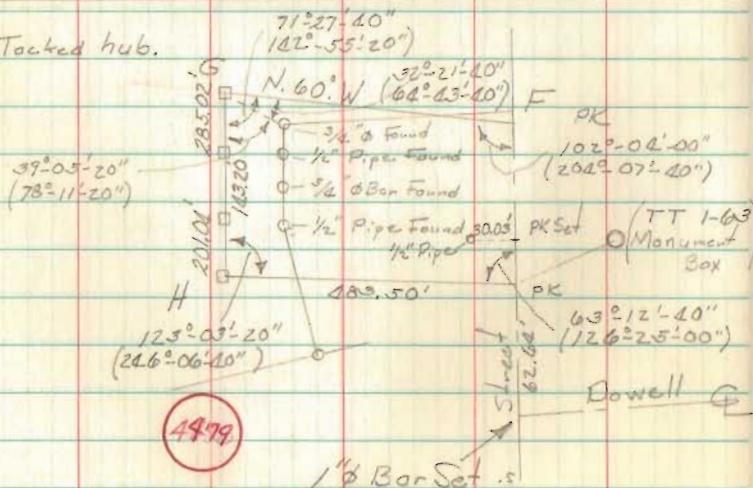
FB 706

Lake Township

Survey - Industrial Growth Corp., Bellefontaine

- A - "X" on brick pavement, 4" beneath surface.
- B - 1" ϕ iron set in Monument Cover, ^{Set} 18 March 1969
- C - 1" ϕ iron set 18 March 1969, in monument cover.
- D - Found 1" ϕ iron in monument box. This point is intersection of Old Corporation Line and E Main.
- E - 1" ϕ set in monument box at intersection of Dowell and Main.
- F - PK nail.
- G - Tacked hub
- H - Tacked hub
- I - 1" ϕ iron set.
- J - 1" ϕ iron set.
- K - PK nail set.

□ = Tacked hub.

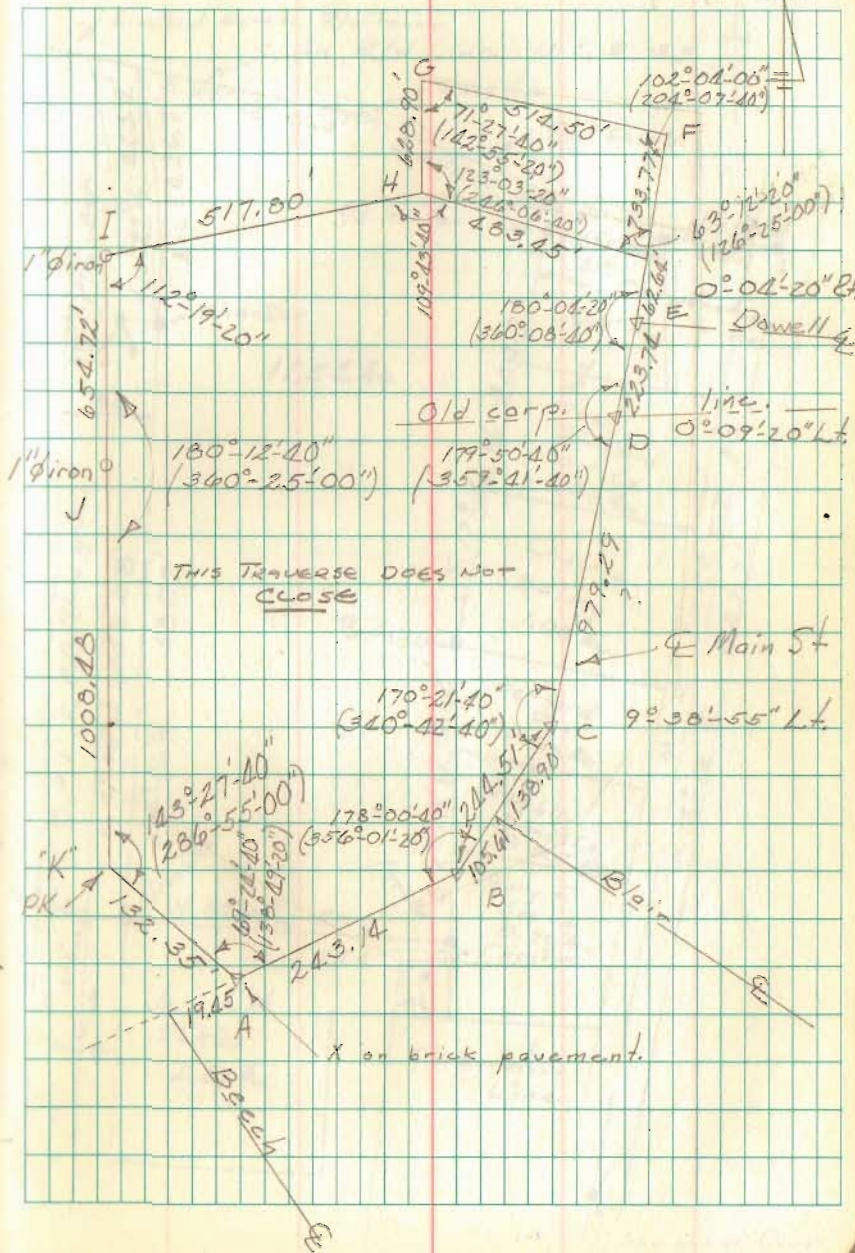


4979

INDEXED ON MAP

March 1969

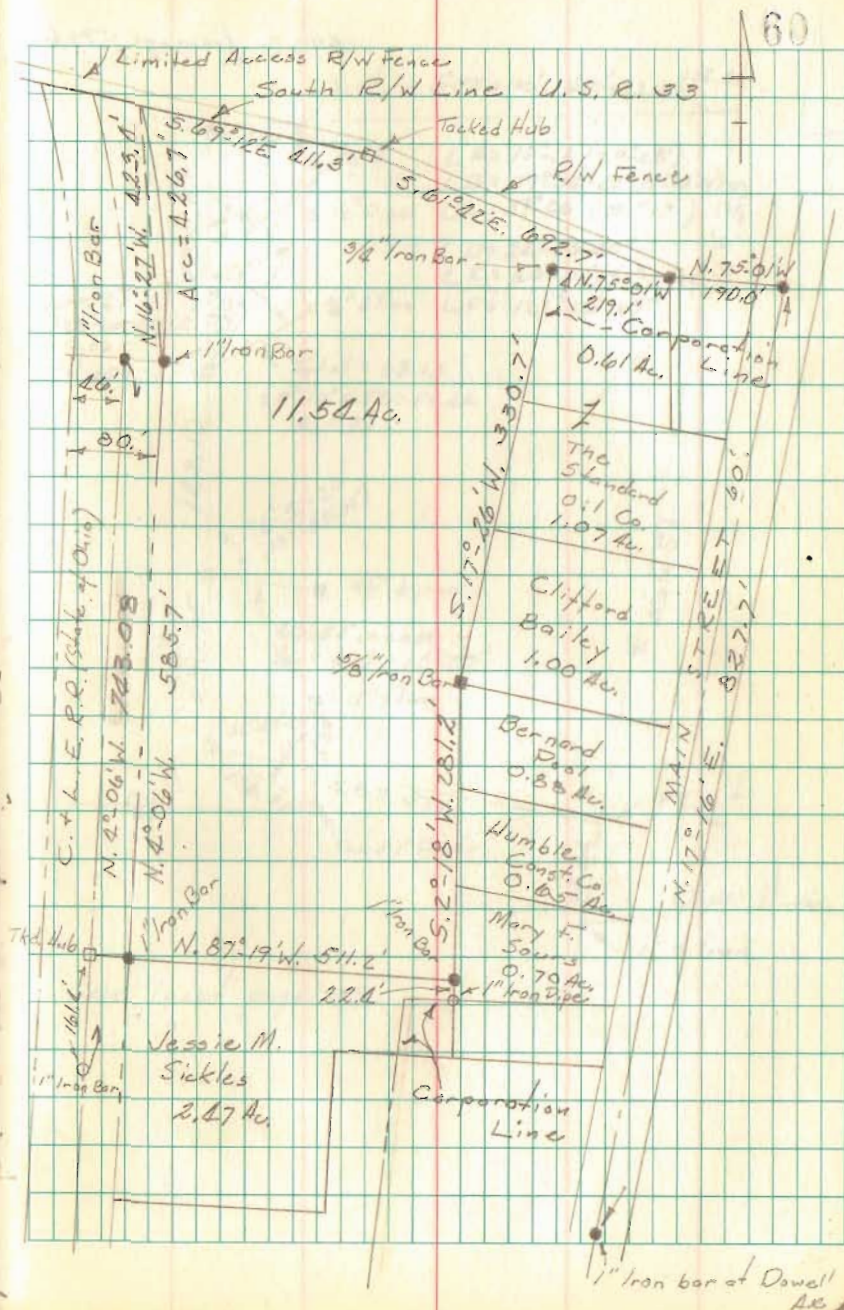
59



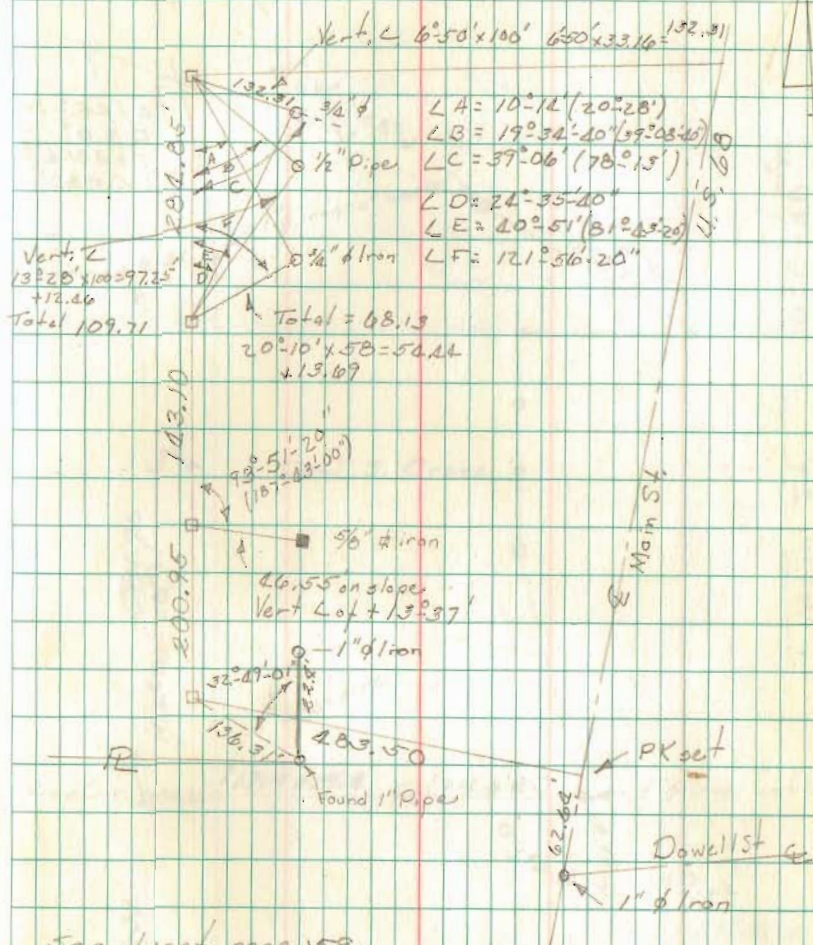
Lake Township V.M.S. 2873
 Survey of Carl S. Crone Property

FB 706

March, 1967



cont. / ramp pg. 59+60



See inset page 59.

FB 706

cont from pgs. 59+60

$\Delta = 45^{\circ} - 36'$
 $D = 6''$
 $T = 201.4$
 $L.C. = 760'$

