

EUCCLID ST. - 60'

N. 6°00'E. 543.60' TO E. OF CHARLES AVE.

185.0'

16.0' PUBLIC ALLEY (NOT OPEN)

30.0'

90°00'

154.0'

90°00'

1471

30.0'

90°00'

154.0'

90°00'

1470

10.0' PRIVATE ALLEY (NOT OPEN)

1469

1468

16.0' PUBLIC ALLEY (NOT OPEN)

MYRTLE AVE. - 50'

1/2" BOLT FOUND

- - P.K. NAILS SET.
- - 5/16" Ø IRON BARS SET.

REFERENCE:  
 M<sup>c</sup>. CRACKIN REVISED ADDITION,  
 PLAT BOOK 1 VOL. A. PAGE 24.

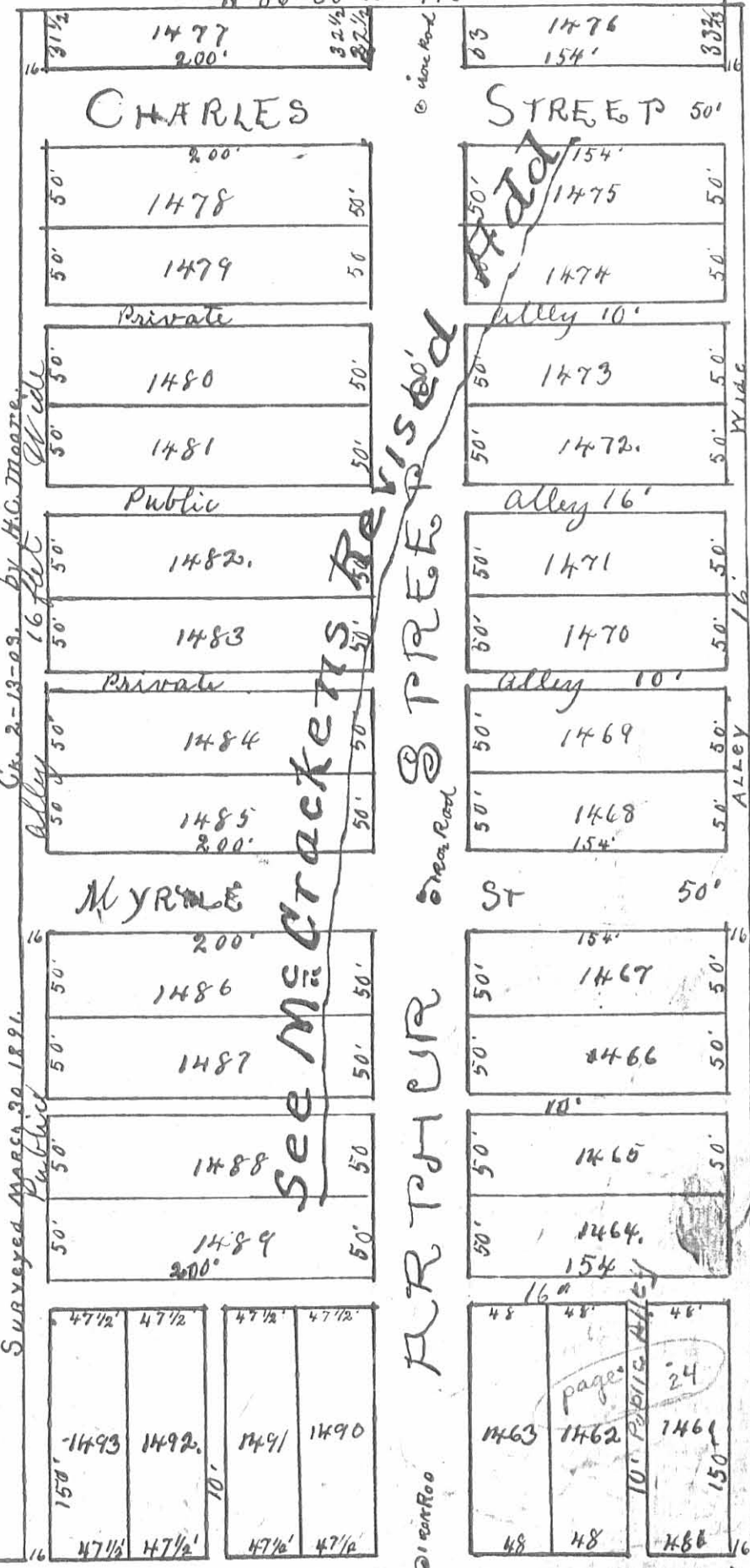
SURVEYED AND PLATTED BY:  
 DANIEL E. GILBERT, P.S.  
 REG. SUR. NO. 5402  
 428 N. MADRIVER ST.  
 BELLEFONTAINE, OHIO 43311



SURVEY OF LOT 1471  
 SECTION 35 T.4 R. 14  
 CITY OF BELLEFONTAINE  
 LAKE TOWNSHIP  
 LOGAN COUNTY, OHIO  
 APRIL 4, 1970  
 SCALE: 1" = 40' 4641-IP

INDEXED ON MAP

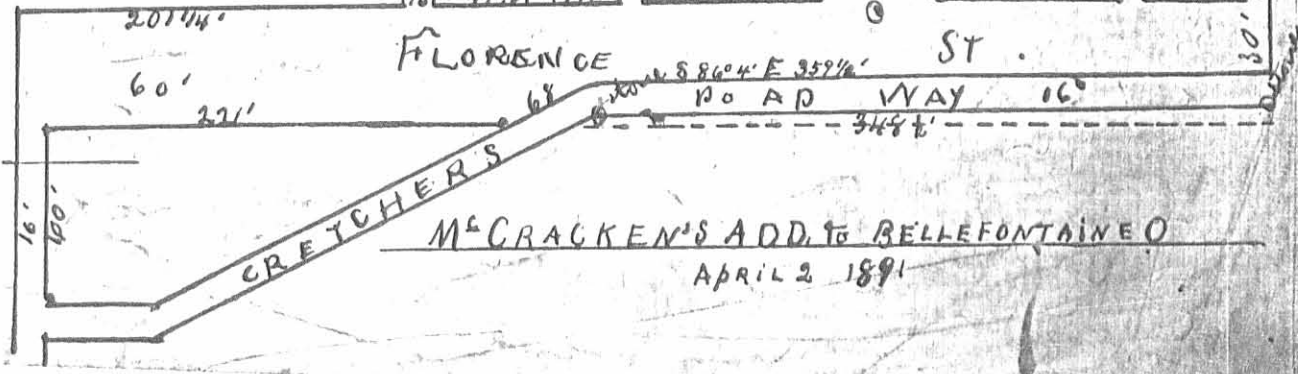
N 86° 50' W 446'



Surveyed March 30 1891. by H.C. Moore

SEE McCracken's Revised

page 24  
10' PUBLIC ALLEY



INDEXED ON MAP  
4641 2P