

PLAT OF A SURVEY
 OF A TRACT OF LAND
 IN THE VIRGINIA MILITARY
 SURVEY #4399, LAKE TOWNSHIP,
 LOGAN COUNTY, OHIO

SHELDON ENGINEERING

4990
 IP

INDEXED ON MAP

LIMA, OHIO

9 / 23 / 71	DATE	
DRAWN	S.E.B.	JOB NO.
CHECKED		
APPROVED		SCALE 1" = 40'

Received 6-13-85

Lee Surveying and Mapping Co.



Farm Surveys • Lot Surveys • Topography • Subdivisions • Construction Layout

855 EAST SANDUSKY AVENUE
BELLEFONTAINE, OHIO 43311

(513) 593-5780

CLAYTON M. LEE, P.S.
JEFFREY I. LEE, P.S.

POWELL TO SHADY LANE PARTNERSHIP

Lying in V.M.S. 4399, City of Bellefontaine, Lake Township, Logan County, Ohio.

Being out of that 12.495 acre tract in the name of Robert Powell (Volume 376, Page 831) and being more particularly described as follows:

Beginning at a 5/8" iron rod found on the south line of the Emro 0.6262 acre tract (Volume 376, Page 640) a distance of 25.00 feet easterly with said south line from its southwest corner. This beginning point also being a northeast corner of the Shady Lane Partnership 5.319 acres (Volume 390, Page 662).

THENCE, with the south line of said 0.6262 acre tract, N 75°-21'-33" E, a distance of 49.00 feet to an iron rod.

THENCE, S 26°-22'-44" E, a distance of 146.02 feet to a 5/8" iron rod.

THENCE, S 3°-20'-44" W, a distance of 129.54 feet to an iron rod found on the east line of said 5.319 acre tract.

THENCE, with the said east line, N 7°-46'-56" W, a distance of 127.10 feet to a 5/8" iron rod.

THENCE, continuing with said east line, N 35°-41'-37" W, a distance of 150.00 feet to the point of beginning.

Containing 0.155 acre.

Prepared by:

Clayton M. Lee

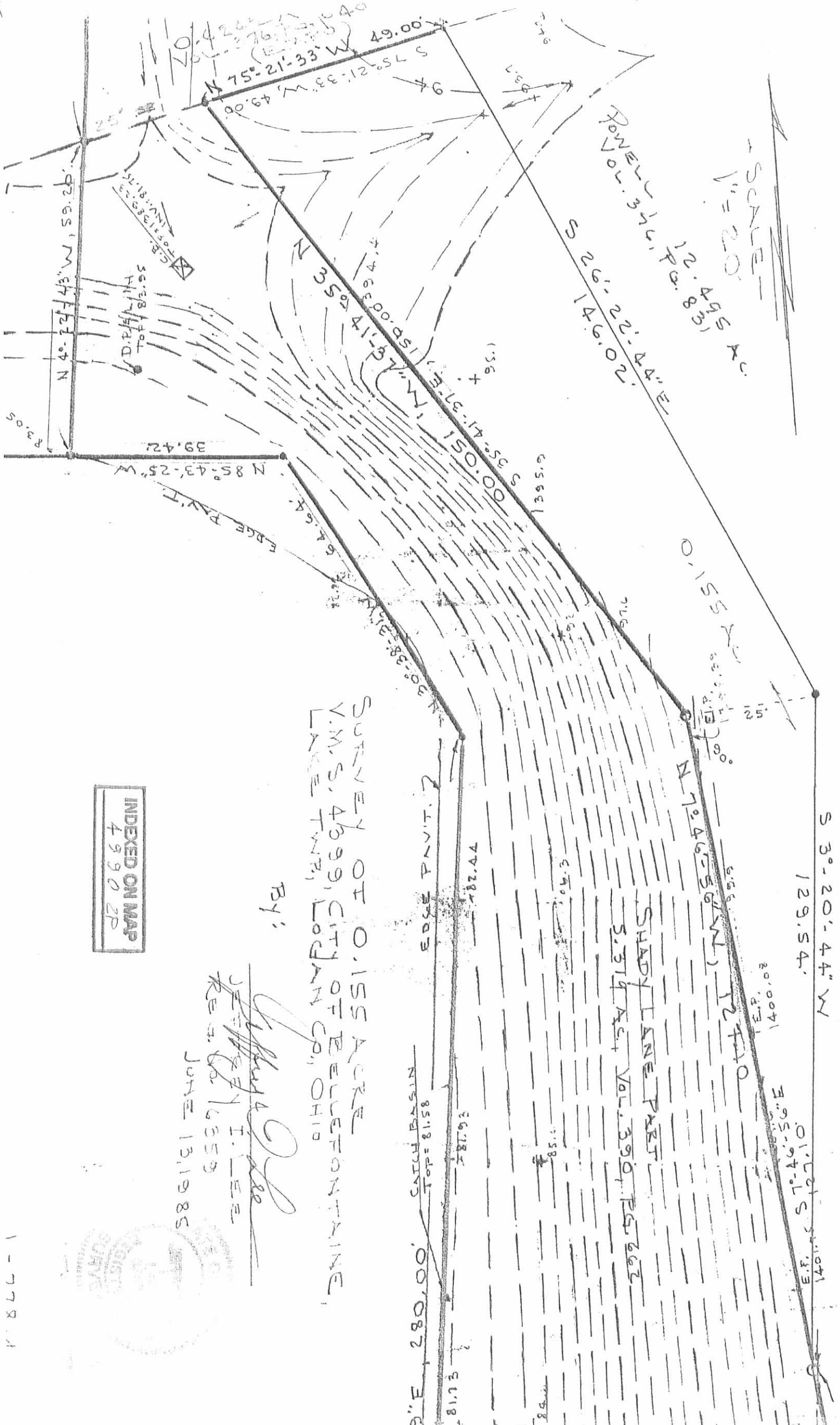
Clayton M. Lee
Registered Surveyor No. 6181
June 13, 1985

This description prepared from an actual field survey.



ORIGINAL FILED IN 4399

INDEXED ON MAP
49302D



SCALE
1" = 20' AS SHOWN

POWELL 370.70' 22.22' 44.44'

S 3°-20'-44" W
129.54'

SHADY LINE PART
S. 319 AC., VOL. 390, P. 562

SURVEY OF 0.155 ACRE
V.M.S. 4399, CITY OF BELLEFONTAINE,
LAKE TWP., LODIAN CO., OHIO

By:

[Signature]
J. E. I. E. E.
RECORDED 16359
JUNE 13, 1985

INDEXED ON MAP
4990 2P

