

SURVEYOR'S CERTIFICATE

I have on May 6, 1972, established Iron Pins each 5/8" dia. by 30" long at three corners and a PK Nail at the North West corner of Lot 2944 as shown on this plat.

Paul R. Clapsaddle

Paul R. Clapsaddle, Surveyor in Training

ATTEST:

Daniel E. Gilbert, P.S.

Daniel E. Gilbert, Reg. Surveyor No. 5402

DUANE ERICKSON SURVEY

State of Ohio

Scale: 1" = 60'

Date: May 10, 1972

Logan County, Lake Twp.

Dr. By: Paul R. Clapsaddle

City of Bellefontaine

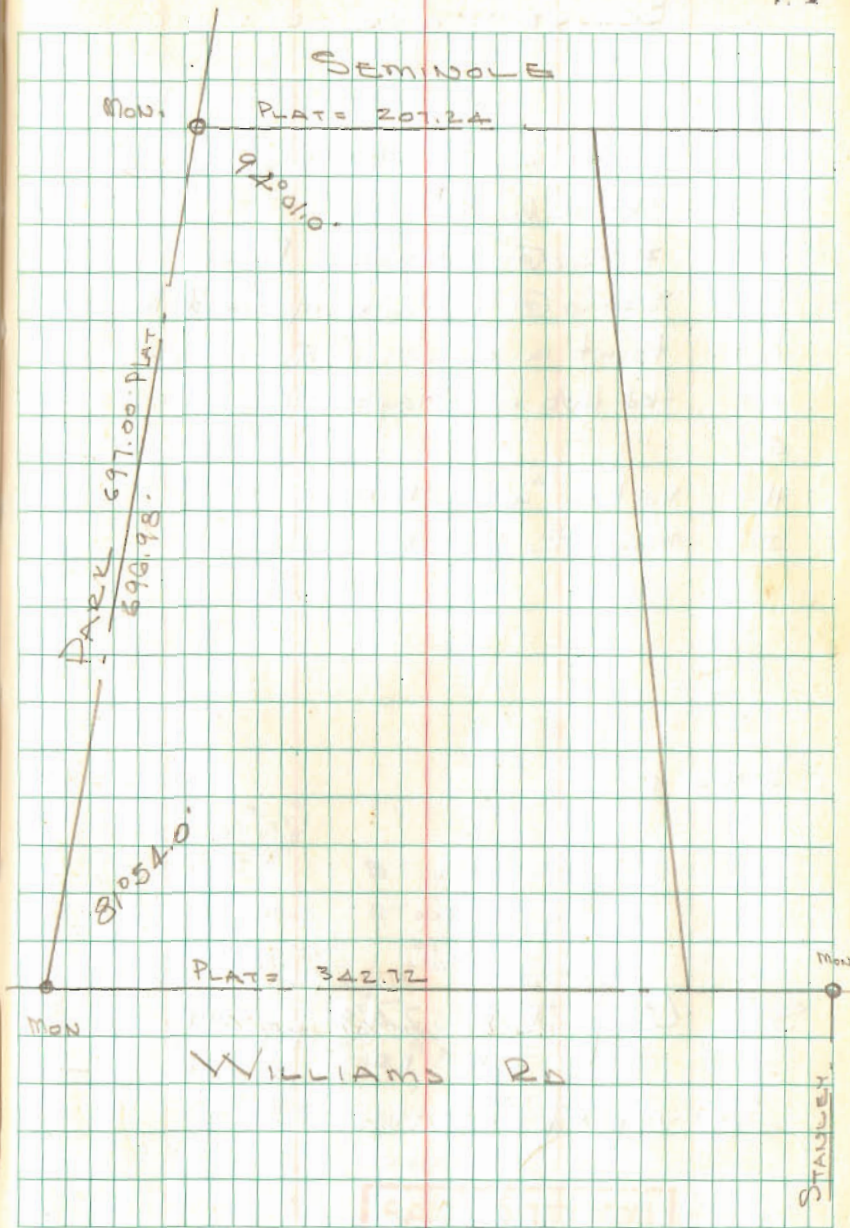
Drawing No. 72-00005

Lot No. 2944

5105 IP

INDEXED ON MAP

WOLF SURVEY
BELLEFONTAINE



INDEXED ON MAP
3105

3105

WOLF SURVEY
BELLEFONTAINE OHIO

- A = P-K Nail Set & Williams
- B = tkd Hub Set
- C = Fence @ Sidewalk R wolf-Kinnard
- D = Stone @ Sidewalk opposite R
- E = Point in old fence Approx. cor.
- F = tkd Hub in Alley - set
- G = " " "
- H = Nail in walk N.W. Cor lot #
- I. moor E Park & Journals

C to D = 47.7'

See City F.B. 248 pg. 41
" " F.B. 189 pg 52 for
Survey of Stanley Add.

INDEXED ON MAP
5105

9/6/73
70° 25

