

Brennen Survey
"Sell"

The following described real estate situated in the City of Bellefontaine, Township of Lake, County of Logan, State of Ohio and being a part of Section 33, Town 4, Range 14, M.R.S. and also being a part of Lots No. 2582 and 2583 of Belleville Addition as recorded in Plat Book A, Volume 1, Page 52, Logan County Recorders Office and being more fully described as follows:

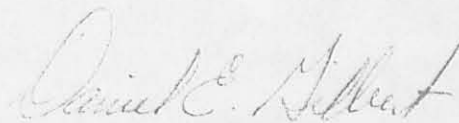
Being 72.50 feet off the west ends of Lots No. 2582 and 2583, containing 7,250.00 square feet or 0.17 Acres, more or less.

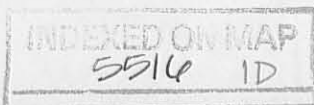
Brennen Survey
"Keep"

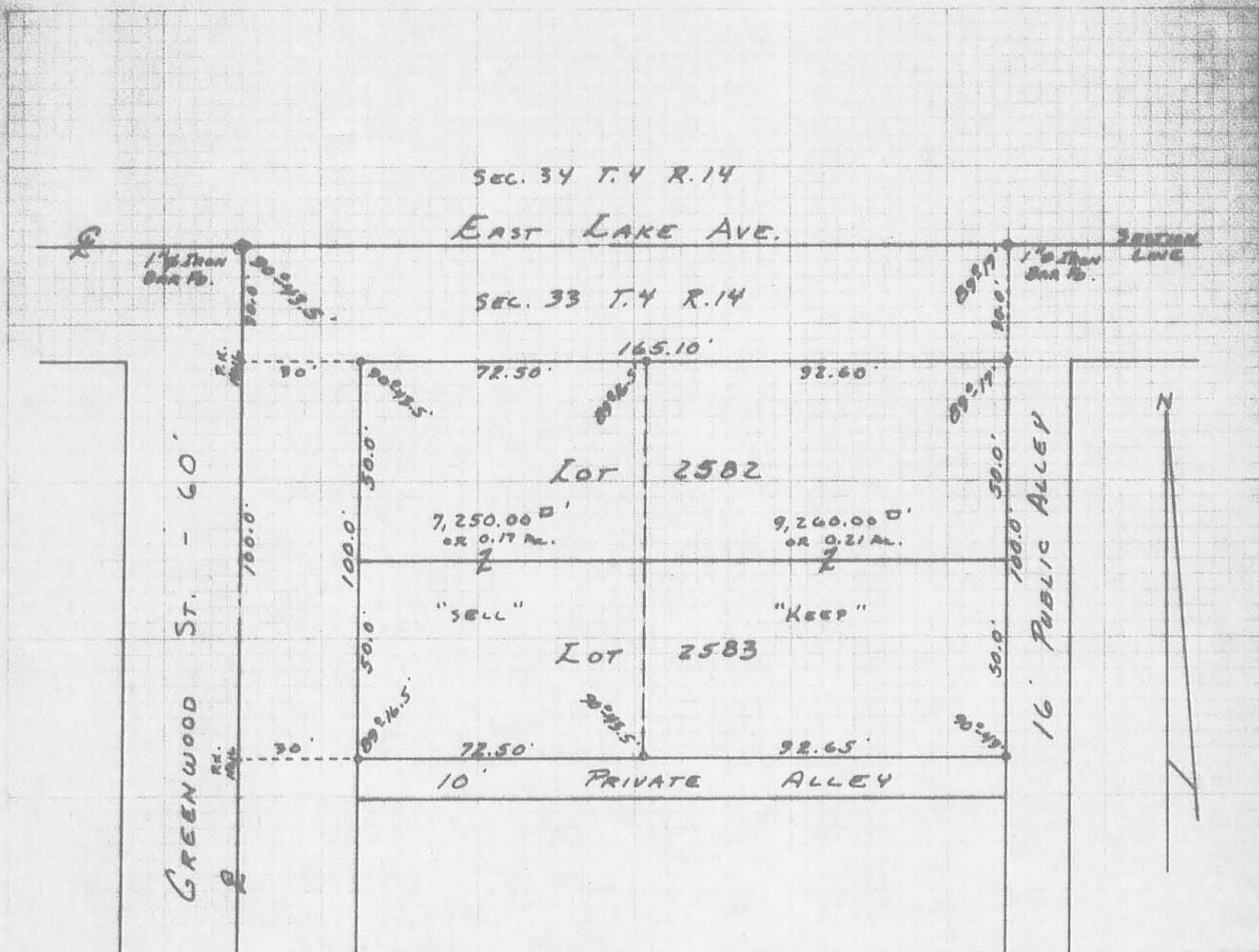
The following described real estate situated in the City of Bellefontaine, Township of Lake, County of Logan, State of Ohio and being a part of Section 33, Town 4, Range 14, M.R.S. and also being a part of Lots No. 2582 and 2583 of Belleville Addition as recorded in Plat Book A., Volume 1, Page 52, Logan County Recorders Office and being more fully described as follows:

Being 92.60 feet off the east ends of Lots No. 2582 and 2583, containing 9,260.00 square feet or 0.21 Acres, more or less.

I hereby certify that the above descriptions are true and accurate as to a survey made by me on May 5, 1973.


Daniel E. Gilbert, P.S.
Reg. Sur. No. 5402
1041 N. Main St.
Bellefontaine, Ohio 43311





o - 1/2" IRON BARS SET.

5516 IP

INDEXED ON MAP

SURVEYED AND PLATTED BY:
 DANIEL E. GILBERT, P.S.
 REG. SUR. NO. 5402
 1041 N. MAIN ST.
 BELLEFONTAINE, OHIO 43311

SURVEY OF LOTS 2582-2583
 CITY OF BELLEFONTAINE
 LAKE TOWNSHIP
 LOGAN COUNTY, OHIO
 MAY 5, 1973

SCALE: 1" = 40'