

Stearns to Morrison
Survey

The following described real estate situated in the City of Bellefontaine,
Township of Lake, County of Logan, State of Ohio and being a part of Section 35,
Town 4, Range 14 and being more particularly described as follows:

Beginning at an iron bar at the northwest corner to Goldie A. Stearn's present
0.25 Acre and at the southwest corner to Gordon F. Morrison's present 0.08 Acre tract;

Thence with the line between Stearn's and Morrison, S. 89° 00' E. 70.00 feet
to an iron bar, southeast corner to the Morrison tract;


Thence S. 0° 45' W. 48.00 feet to an iron bar, said iron bar being 7.0 feet
north of the south line of the Stearn's tract;

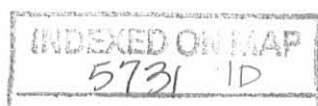
Thence with a line parallel and 7.0 feet from the south line of the Stearn's
tract, N. 89° 00' W. 70.00 feet to an iron bar in the east line of a 16.50 foot
public alley;

Thence with the east line of said alley, N. 0° 45' E. 48.00 feet to the place
of beginning, containing 0.077 Acres, more or less.

The above described tract being surveyed off the west end of Goldie A. Stearn's
present 0.25 Acre tract as described in Deed Vol. 334 Page 420 (4-1-71), Logan
County Recorders Office.

I hereby certify that this is a true and accurate description of a survey made
by me on October 19, 1974.


Daniel E. Gilbert, P.S.
Reg. Sur. No. 5402
1041 N. Main St.
Bellefontaine, Ohio 43311



Lot No. 1271

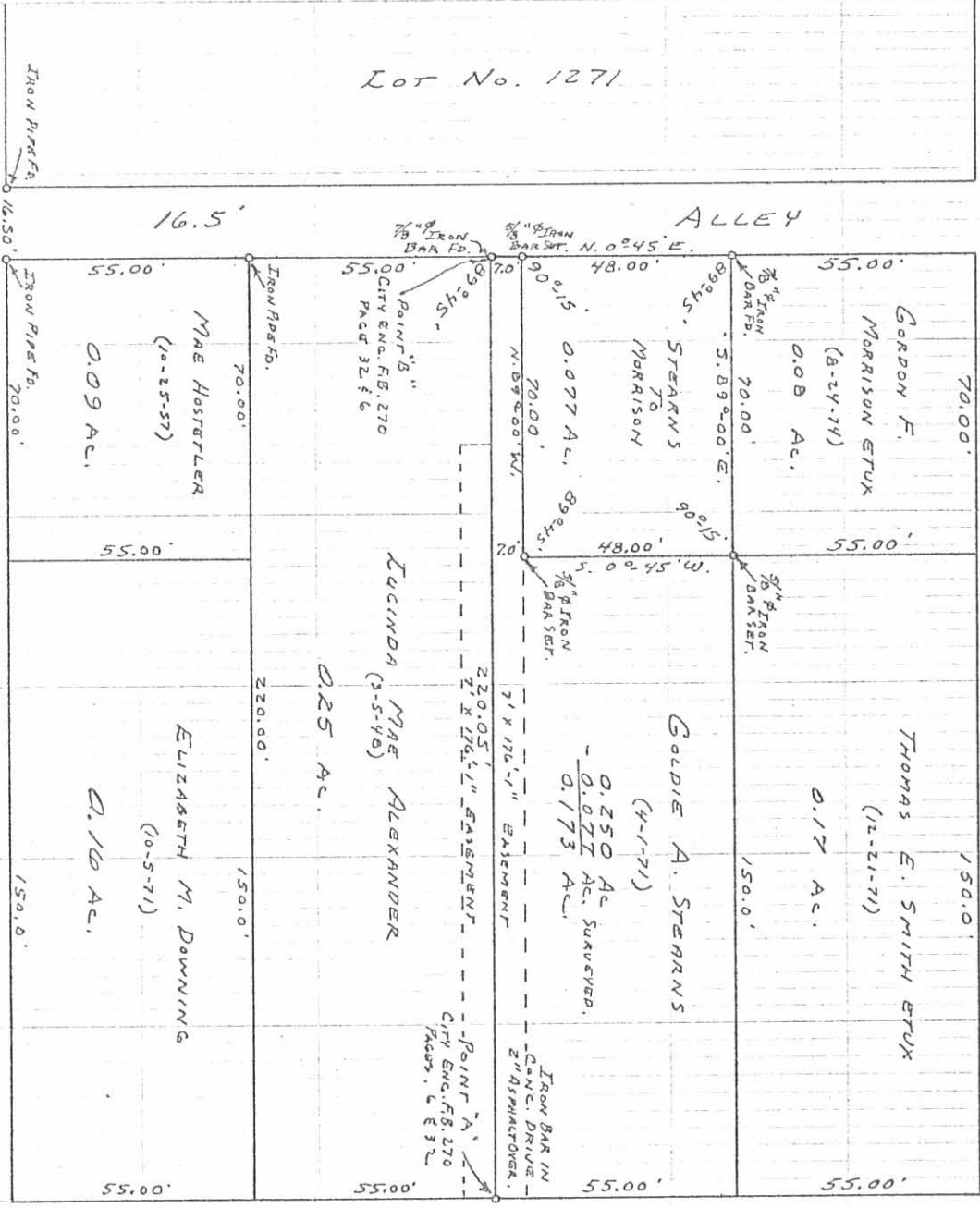
ALLEY

POWELL AVE

50'

ALLEY

16.5'

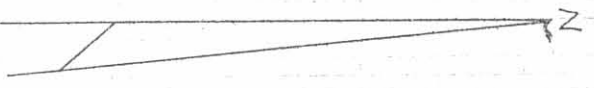


SURVEYED AND PLATTED BY:
 DANIEL E. GILBERT, P.S.
 REG. SUR. NO. 5742
 1041 N. MAIN ST. CHIO 43311
 BELLEFONTAINE, OHIO 43311

5731
 1P

INDEXED ON MAP

N. MAIN ST. - 80'



STEARNS TO MORRISON
 SECTION 35 T. 4 R. 14
 LAKE TOWNSHIP
 LOGAN COUNTY, OHIO
 OCTOBER 19, 1924
 SCALE: 1" = 40'

50 M^c Brecken Survey on
 St. Main St. **FB C.M. RICHEY 1**

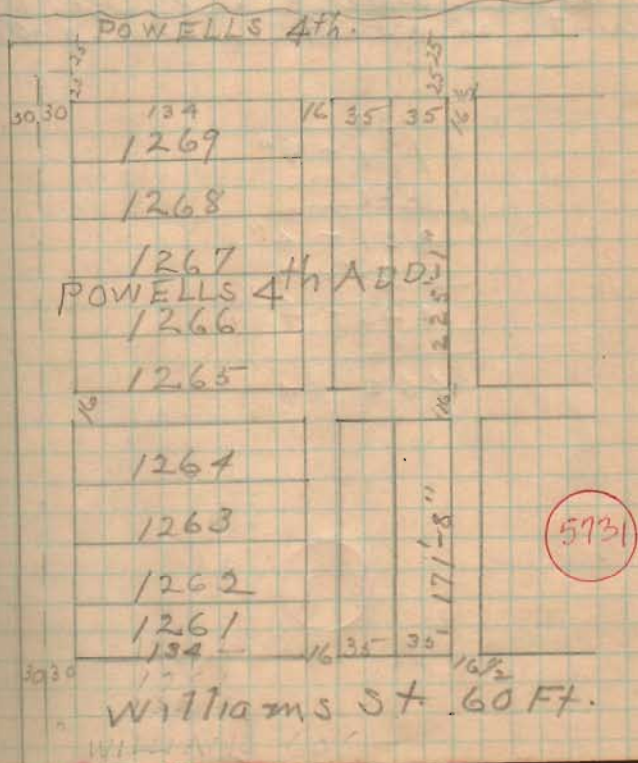
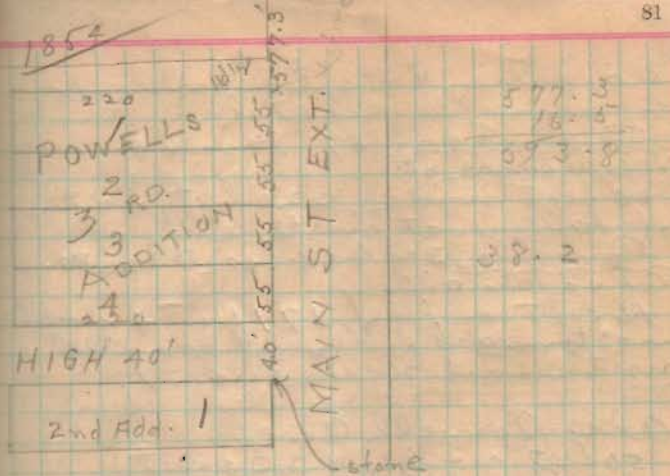
Detroit and Williams agrees
 on curbs at intersection.

Main and Williams contains by
 Powell and Main - Spolar
 Hydrant East 27.75'
 Abbr 3" S.W. 38.2'
 Sugar 3" N.W. 39.4'

Powell and Detroit
 was 26, 1903
 at intersection of lines joining
 lead points in cement curb
 set above pin 73" \circ X 12"
 Iron valve by E. of N. 6.9'
 same S. of E. 8.5 (edge)
 same S. of W. 2.60 (edge)
 Hydrant E. W. 27.2'

Williams + Detroit
 lead points are set in circular
 curbs at each corner of the
 intersection and 14' from
 the center line.

Detroit 60' wide
 Main 80' wide
 Williams 60' wide
 Powell 50' except at Main.
 Powell to Williams on Detroit
 Plat 471'-2"
 Main to Detroit on Williams
 Plat 526'
 Main to Detroit on Powell
 Plat 526.5' Meas. 528'-4" 9/16, 1901
 Williams to Powell on Main
 No Plat or Meas. distance



Dedication of street of alley
by name Powell et al.
Block 2nd & 3rd Bigs 64.
William St.
60 feet wide, 220 feet north
of alley at north side of
Powell 3rd Add. (Block 2nd & 3rd.)
Also an alley
16 feet wide, 177 feet 4 inches
northward from and parallel
with said Sullivan St.

Also Powell Ave.
50 feet wide, 4220 feet
northward from and parallel
with said last mentioned alley.

30
171 - 4"
220
421 - 4"
25
446 - 4"
16
462 - 4"

FB C.M. RICHEY 1

5731

Commenced chaining at \odot
High
Ch. N. 240' to N. E. Lot 1
Powell 3rd Add.
Ch. N. from this point 577.3 feet
to point on front of brick house
Ch. 16 1/2 feet north to point
produce north of stub of
old post.
Distance apparently wrong.

Found Hydrant 4 inch meters
at Powell and Sullivan St. in
Sugar water tank.
Chained south to \odot Sullivan
and Main (Iron box)
458.4 feet
Distance called for by
street dedication #62-4"

Took \odot old post stub as line on S.
Set iron bar 1-10" W. of \odot post
for corner on line 40' W. of
 \odot Main St.

Turned L. 90° back to \odot St.
" " 89° as called for
in Keweenaw deed.

This place corner 9' N. of
south side of barn and 21' E
east of west side of barn.

Set iron bars for corners at
S. side of barn.

O.K. L. 89° 12'

Measured N. 55' to \odot
a nail of fence.

Measured 55' N. on Main
& set tack in bottom of nail for corner

Run N. line through set tack
in total distance of 100 ft. in
McCallum's back yard 6"
south of E. side of of rail
D

S line passes
5 - 6 1/2" north of N.E. corner
of back house
05 - 5 1/2" at N.W. of house
set stakes on line

Set iron bars at all corners
except N.W.

Records	1.25
Survey	3.00
Chamberlain	2.00
Iron Bars	.40
	<u>\$6.65</u>

5931

FB C.M. RICHEY 1