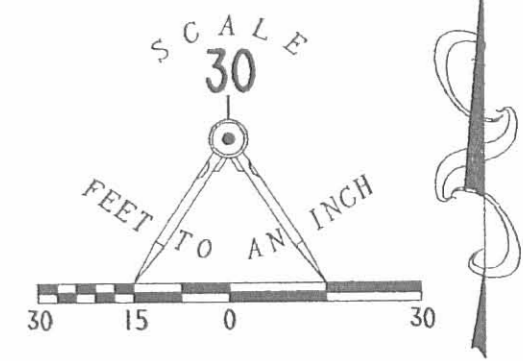
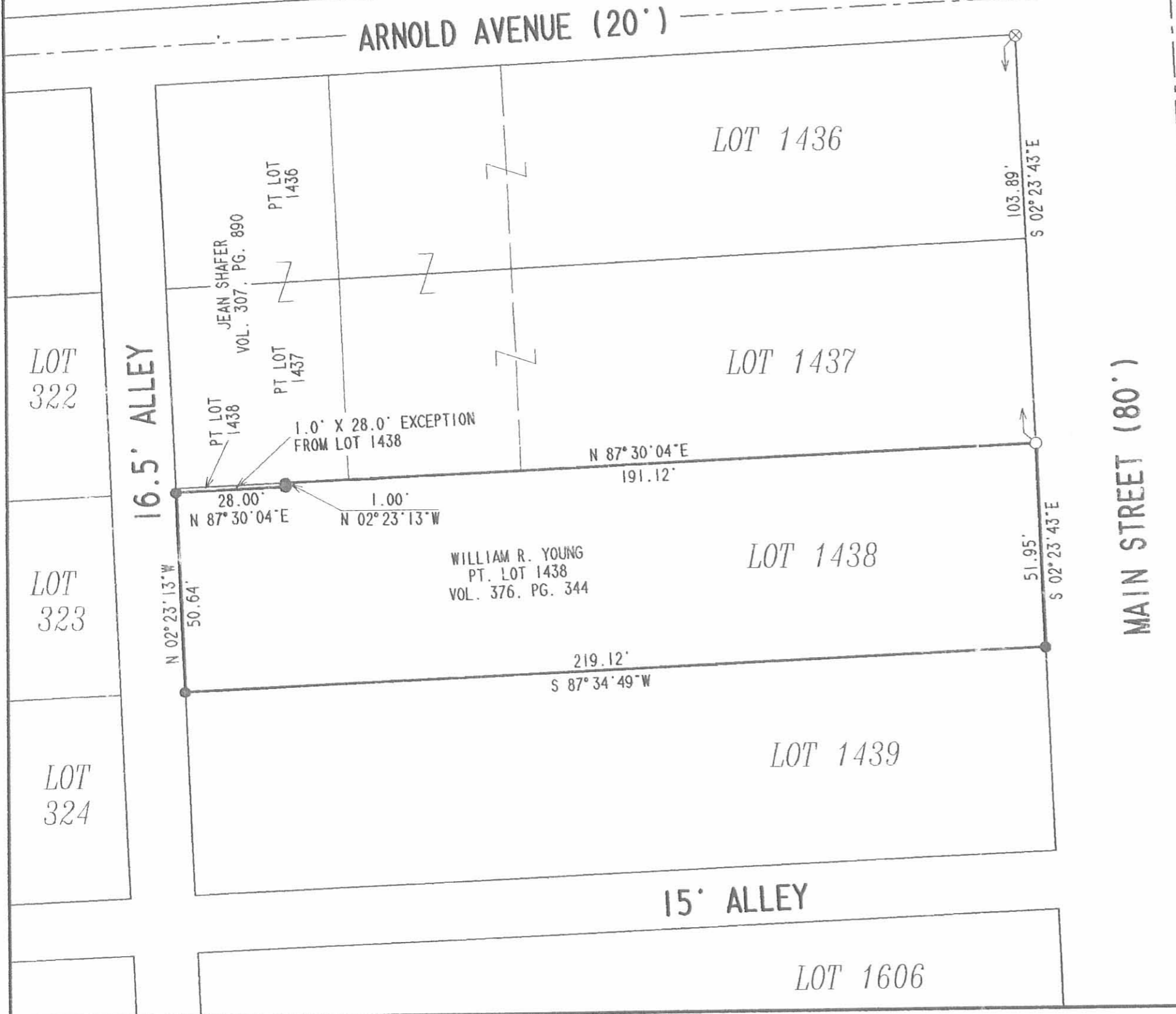


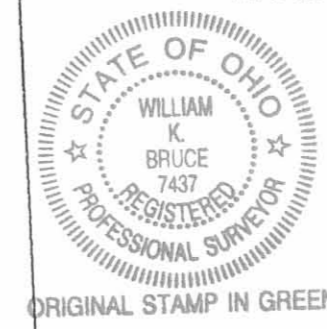
20 5903 smj/ll

2 WORKING DAYS
BEFORE YOU DIG
CALL TOLL FREE 800-362-2764
OHIO UTILITIES PROTECTION SERVICE



- LEGEND
- 5/8 INCH IRON ROD SET
 - 5/8 INCH IRON ROD FOUND
 - ⊗ RAILROAD SPIKE FOUND

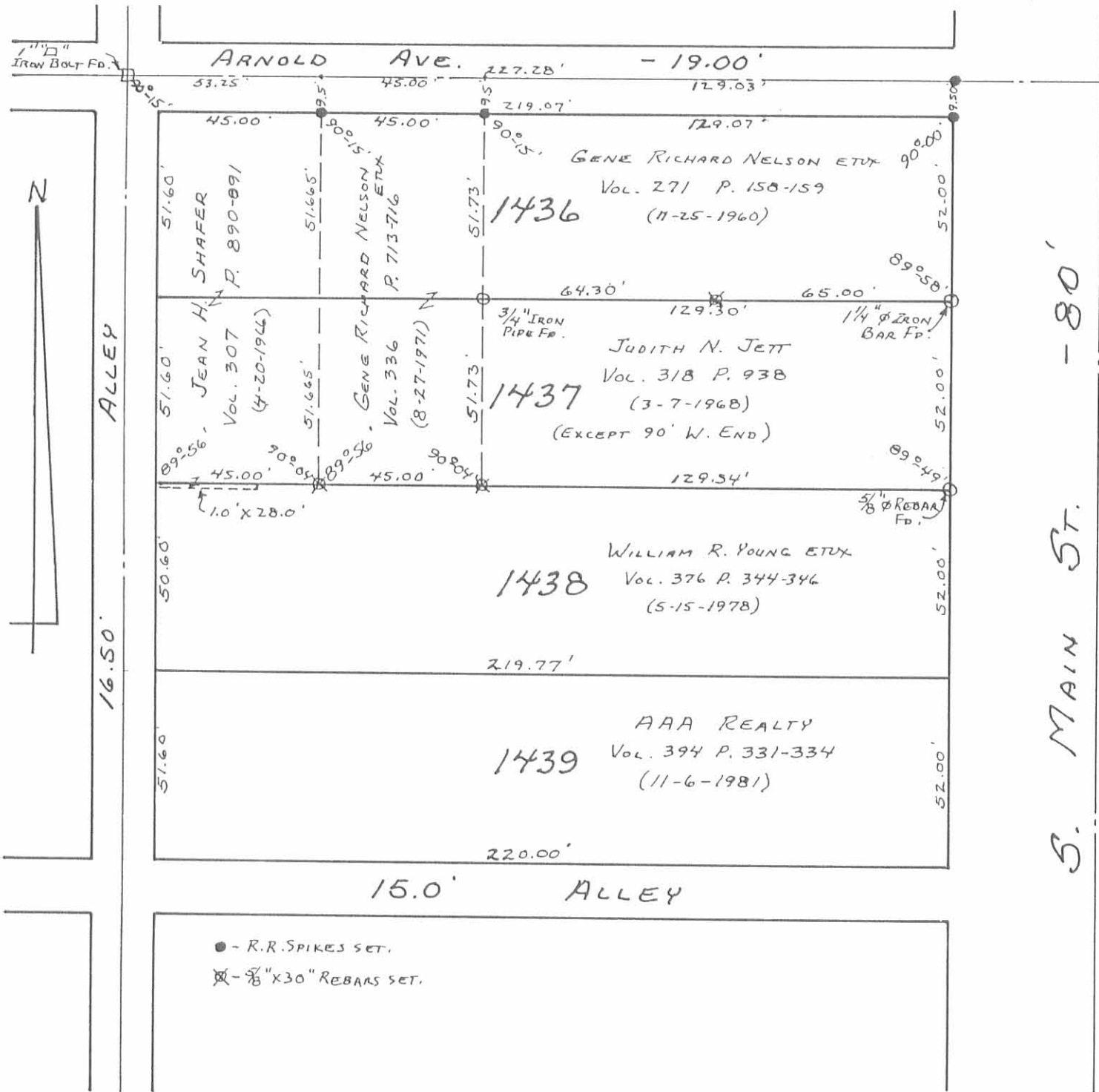
RETRACEMENT SURVEY OF
PART OF LOT 1438 OF ARNOLDS ADDITION
PLAT CABINET A, SLIDE 21
LAKE TOWNSHIP
CITY OF BELLEFONTAINE
LOGAN COUNTY, OHIO



SURVEYED BY:
William K. Bruce
WILLIAM K. BRUCE
PROFESSIONAL SURVEYOR 7437
APRIL 18, 2003

COPYRIGHT 2003 BY:
LEE SURVEYING & MAPPING CO., INC.
117 North Madriver Street
BELLEFONTAINE, OHIO 43311
(937) 593-7335
D 407 WYOUNG L-3566-3

INDEXED ON MAP
5739 1P



ALLEY

16.50'

15.0' ALLEY

S. MAIN ST. - 80'

- - R.R. SPIKES SET.
- ⊗ - 5/8" X 30" REBARS SET.

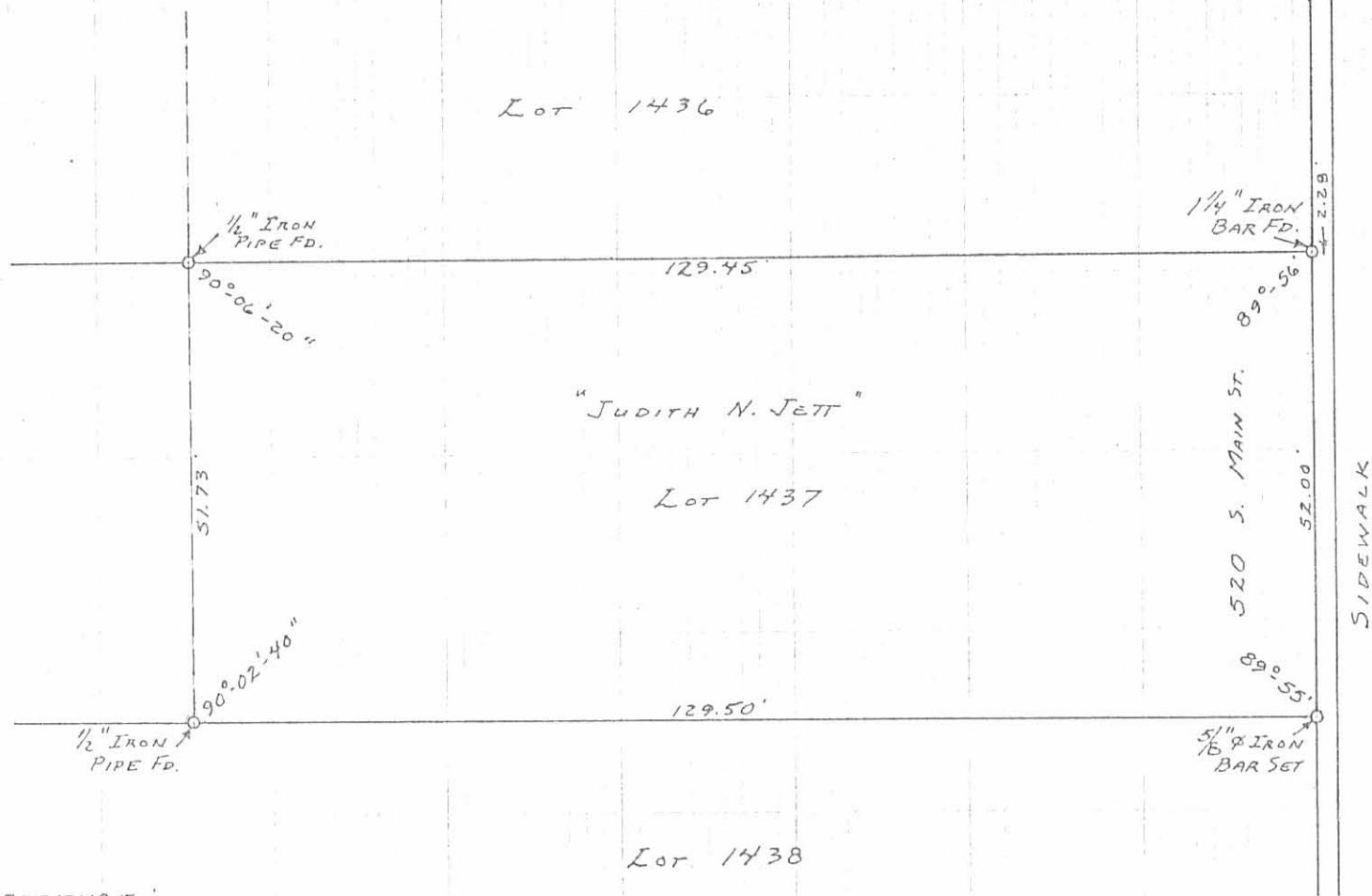
INDEXED ON MAP
5739 2P



Daniel E. Gilbert
 DANIEL E. GILBERT, P.S.
 REG. SUR. No. 5402
 400 N. PARK ST.
 BELLEFONTAINE, OHIO
 43311

NELSON SURVEY
 PART OF LOTS No. 1436-1437
 CITY OF BELLEFONTAINE
 LAKE TOWNSHIP
 LOGAN COUNTY, OHIO
 AUGUST 18, 1987

SCALE: 1" = 40'



REFERENCE:
 WATKINS SURVEY
 CITY ENG. F.B. 243 PAGES 67-68

SURVEYED AND PLATED BY:
 DANIEL E. GILBERT, P.S.
 REG. SUR. NO. 5402
 1041 N. MAIN ST.
 BELLEFONTAINE, OHIO 45811

JETT SURVEY
 LOT NO. 1437 PART
 520 S. MAIN ST.
 CITY OF BELLEFONTAINE
 LAKE TOWNSHIP
 LOGAN COUNTY, OHIO
 JULY 6, 1974

SCALE: 1" = 20'

5739 3P

INDEXED ON MAP