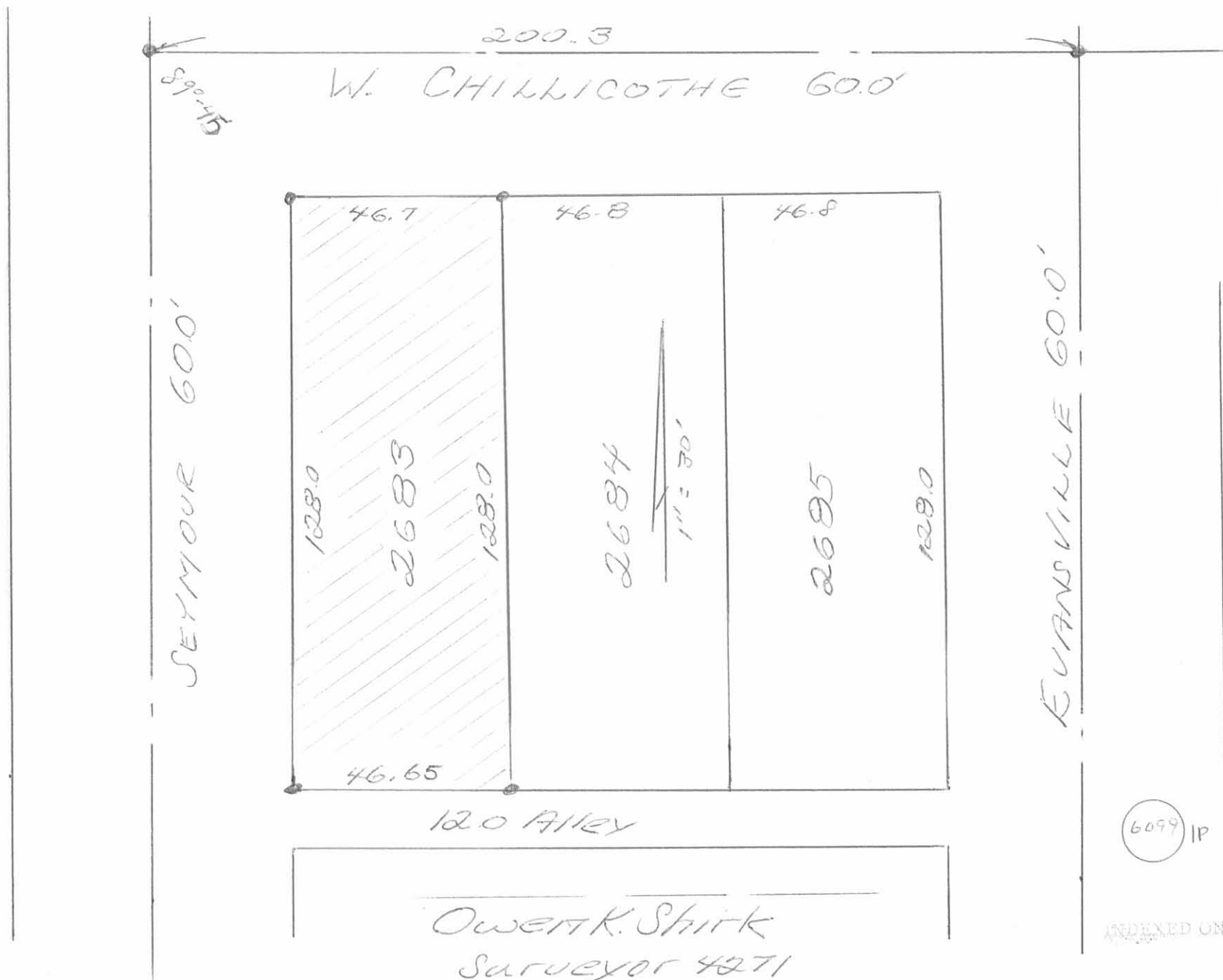


ALMASSY SURVEY - 709 W. CHILLICOTHE
LOT 2683 - BELLEFONTAINE, OHIO



Owen K. Shirk
Surveyor 4271
Sept. 13, 1976

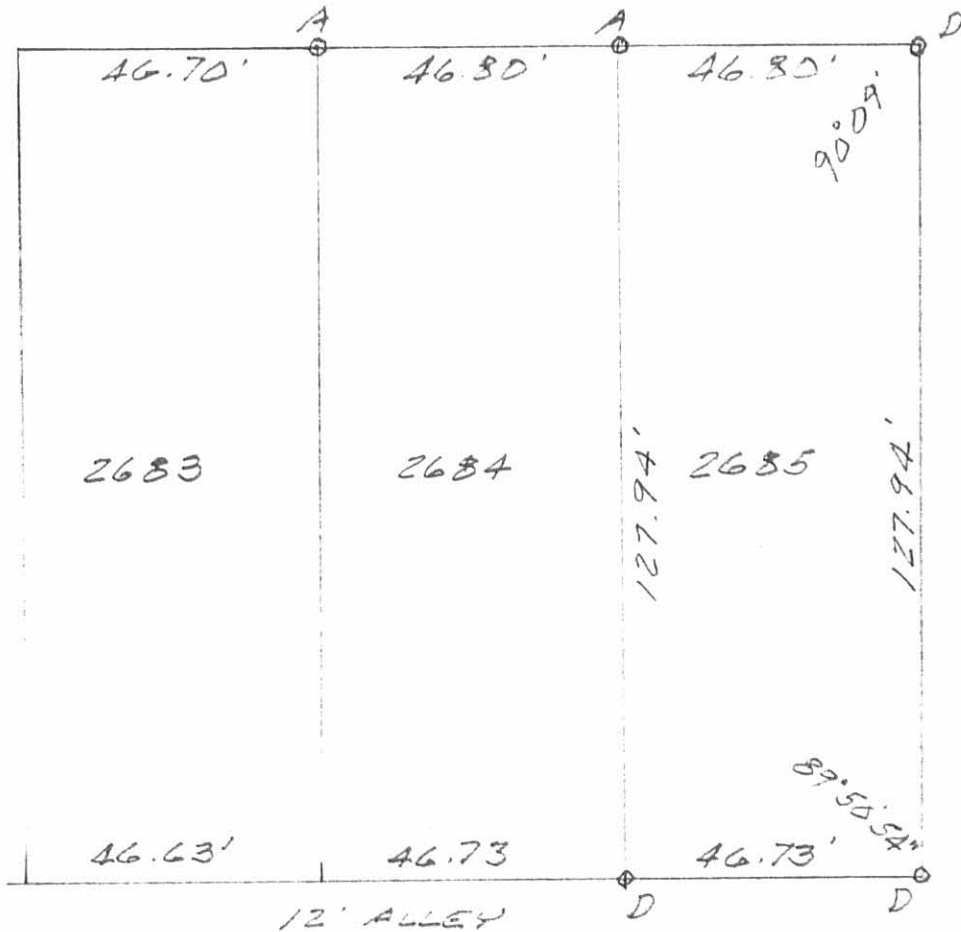
6099 IP

INDEXED ON MAP

W. CHILlicoTHE (60')

TAX MAP

SEYMOUR ST. (60')

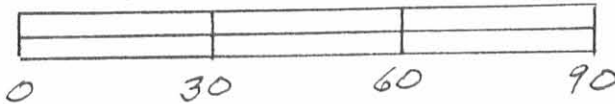


EVANSVILLE (60')

LEGEND:

- A = 3/4" IRON BAR FD
- B = 1" PIPE FOUND
- C = P.K. NAIL FD.
- D = 5/8" IRON BAR SET

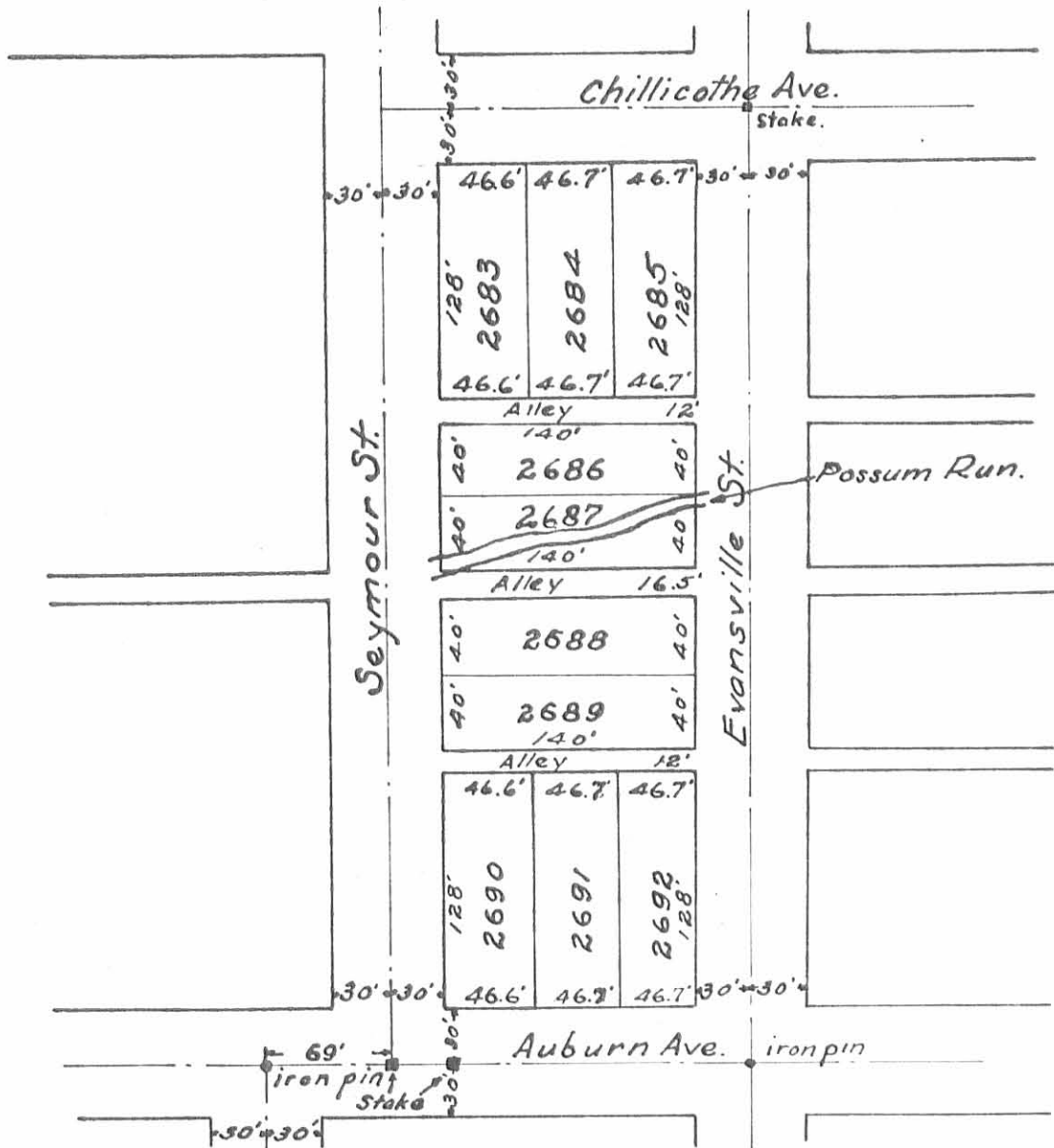
SURVEY OF LOT 2685 IN
 CITY OF BELLEFONTAINE,
 OHIO FOR ANN COX.
 APRIL 12, 1993
 SCALE: 1" = 30'



AUBURN

Leslie H. Geeslin
 LESLIE H. GEESLIN
 RUSHsylvania, OHIO
 PH 513-468-2793

INDEXED ON MAP
 6099 2P



Wright's Subdivision - Lot No. 935.
 McBeths Addition.
 Scale 1" = 100' Aug. 18, 1909.
 Office of City Engineer.
 Bellefontaine, Ohio.

W.H.C.

INDEXED ON MAP
 6099 3P