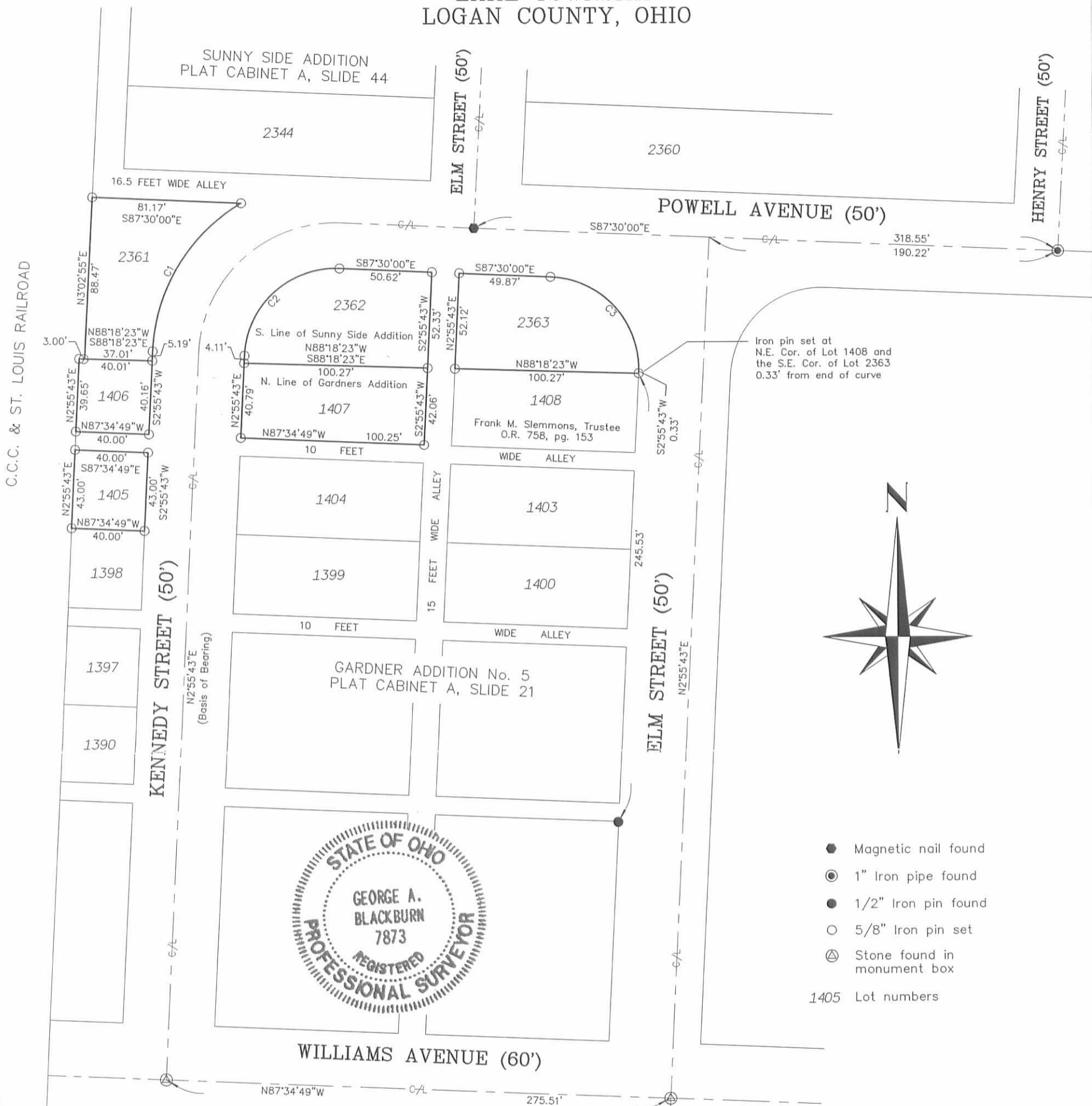


Red 8-31-05 smak

PLAT OF SURVEY IN  
SECTION 35, TOWN 4, RANGE 14, B.M.R.S.  
THE CITY OF BELLEFONTAINE,  
LAKE TOWNSHIP  
LOGAN COUNTY, OHIO



CURVE DATA

Curve C1	Curve C2	Curve C3
R=100.00'	R=50.00'	R=50.00'
L=98.06'	L=78.17'	L=78.91'
Cd=94.18'	Cd=70.45'	Cd=70.97'
Cb=S31°01'20"W	Cb=N47°42'51"E	Cb=S42°17'09"E
Δ= 56°11'13"	Δ= 89°34'16"	Δ= 90°25'44"

ACREAGE SUMMARY

Lot 1405	= 0.039 Acre
Lot 1406	= 0.037 Acre
Lot 1407	= 0.095 Acre
Lot 2361	= 0.100 Acre
Lot 2362	= 0.110 Acre
Lot 2363	= 0.106 Acre

EDDIE R. AND WANDA R. BYRGE SURVEY

Being a retracement survey of Eddie R. and Wanda R. Byrge's Lot 1405, 1406 and 1407, of Gardner's Addition No. 5 recorded in Plat Cabinet A, Slide 21 and of Lot 2361, 2362 and 2363 of Sunny Side Addition recorded in Plat Cabinet A, Slide 44 and described in Official Record Volume 773, page 341.



I hereby certify that this plat was prepared from an actual field survey and that monuments were placed as indicated hereon.  
*George A. Blackburn* 8/29/05  
George A. Blackburn, R.S. 7873

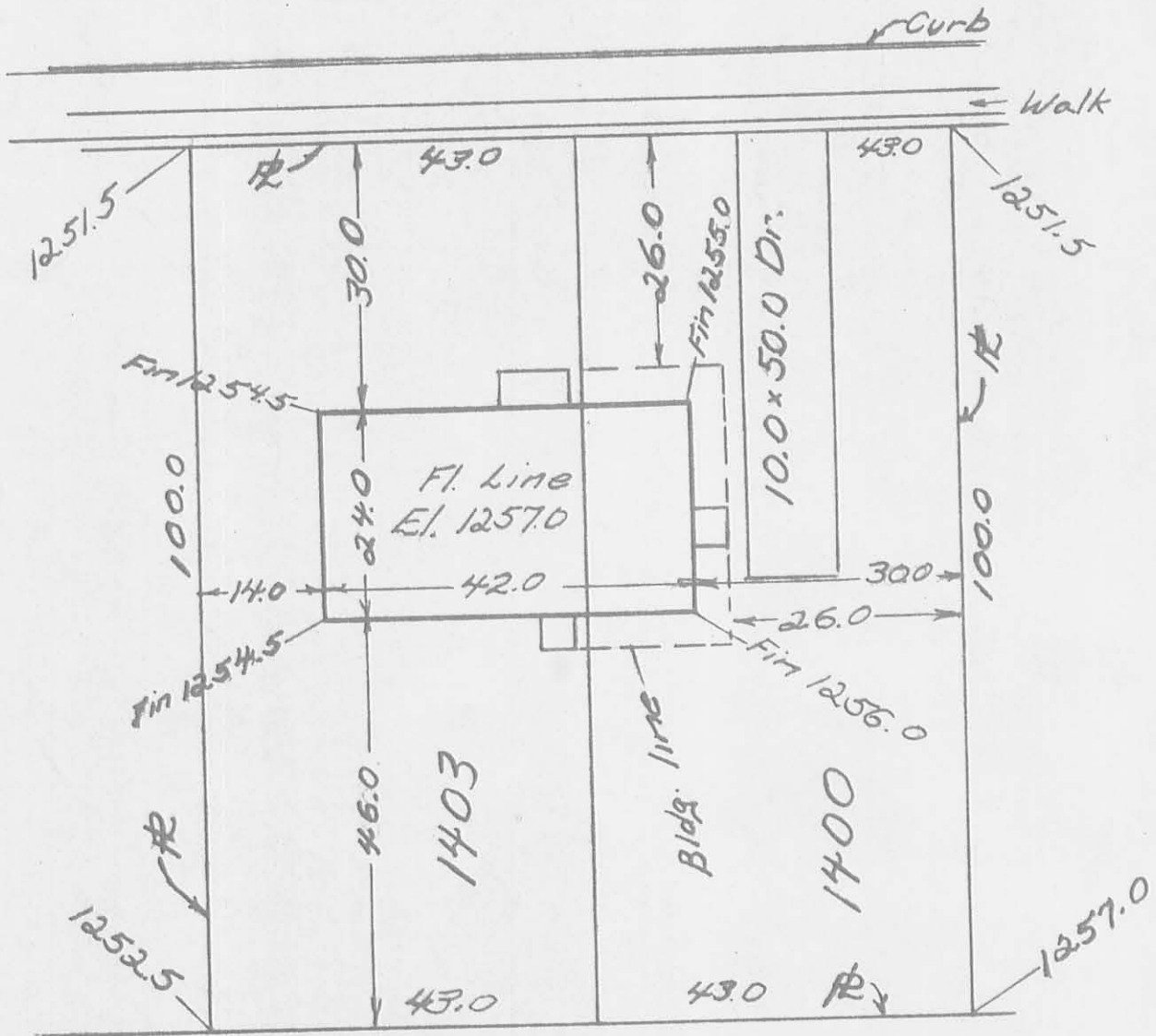
INDEXED ON MAP  
6157 LP

Filename: Byrge 8-05  
Scale: 1" = 60'  
Date: 8/29/05  
F.B. 12, pg. 43

**BLACKBURN SURVEYING**  
12125 GREEN STREET  
MIDDLEBURG, OHIO 43336  
(937) 666-5605

LOTS 1400 & 1403  
 BELLEFONTAINE, OHIO

Elevation scaled from City Maps.  
 ELM ST.



1" = 20'

(6157) 28

INDEXED ON MAP

Owen K. Shirk

DR. By: Owen K. Shirk

Surveyor 4271

Drawn: 5-13-71