

LESLIE H. GEESLIN
 REGISTERED SURVEYOR 5248
 P. O. BOX 274
 RUSHSVLVANIA, OHIO 43347
 TELEPHONE: (937) 468-2793

KRESS SURVEY

January 12, 1998

The following described real estate situated in the State of Ohio, County of Logan, Township of Lake, in the City of Bellefontaine, and more particularly described as follows:

Beginning at a 5/8 inch iron bar set in the north line of Chillicothe Avenue at the southwest corner of Carl Ray Thompson, et al's Pt. Lot 215 of the Plat of the Original Town of Bellefontaine, as shown in Plat Cabinet "A" Slide 1 and described in O. R. Vol. 21 Page 836.

Thence with the north line of said Chillicothe Ave. S. 89° 54' 09" W. 49.99 feet to a 5/8 inch iron bar set at the southeast corner of the Board of Logan County Commissioner's Pt. Lot 206 and 203 of the Plat of the Original Town of Bellefontaine as described in D. B. Vol. 397 page 615.

Thence with the east line of said Commissioner's tract and the east line of the Board of County Commissioners of Logan County, Ohio's Pt. Lots 190, 203 and 206 of the Plat of the Original Town of Bellefontaine as described in D. B. Vol. 386 page 991 (Tract I) N. 0° 02' 38" W. 149.21 feet to a 5/8 inch iron bar set in the south line of the Board of County Commissioners of Logan County, Ohio's Pt. Lots 203, 206 and 215 of the Plat of the Original Town of Bellefontaine as described in D. B. Vol. 386 Page 991 (Tract II).

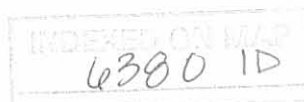
Thence with the south line of said Tract II N. 89° 54' 23" E. 49.94 feet to a 5/8 inch iron bar set at said Thompson's northwest corner.

Thence with said Thompson's west line S. 0° 03' 37" E. 149.21 feet to the place of beginning.

Containing 0.171 acre more or less of which 0.127 acre is in Lot 206 and 0.044 acre is in Lot 215.

The above described 0.171 acre tract being a new survey of Connie Kress' Pt. Lot 206 and 215 of the of the Plat of the Original Town of Bellefontaine, as described in O. R. Vol. 220 Page 32.

Bearings are based on an assumed bearing (S. 89° 54' 09" W.) for the north line of Chillicothe Ave. in this field survey by Leslie H. Geeslin, Reg. Surveyor 5248 on January 12, 1998



BOARD OF COUNTY COMMISSIONERS
OF LOGAN COUNTY, OHIO
PT. LOTS 203, 206 & 215 TRACT II
D.B. VOL. 386 PG. 991

BOARD OF COUNTY
COMMISSIONERS
OF LOGAN COUNTY,
OHIO PT. LOTS
190, 203, AND 206
TRACT I
D.B. VOL. 386
PG. 991

BOARD OF LOGAN COUNTY
COMMISSIONERS
PT. LOT 206 & 203...

D.B. VOL. 397 PG 615

149.21'

N. 0° 02' 38" W.

0.171 AC
CONNIE KRESS PT LOTS
206 & 215 D.R. VOL. 220 PG. 32

LOT 206 (0.127 AC.)

LOT 215 (0.044 AC.)

149.21'

S. 0° 03' 37" E.

CARL RAY THOMPSON, ETAL
PT. LOT 215
D.R. VOL. 21 PAGE 836

16' ALLEY

S. 89° 54' 09" W. 49.99'

CHILLICOTHE AVENUE

SCALE: 1" = 30'



LEGEND:

○ = 5/8 INCH IRON
BAR SET

SURVEY OF 0.171 ACRE IN
THE CITY OF BELLEFONTAINE,
LAKE TOWNSHIP, LOGAN COUNTY,
OHIO FOR KIM KRESS ON
JANUARY 12, 1997



6380 IP

Leslie H. Geeslin
LESLIE H. GEESLIN
EUSHKYLVANIA, O
(937) 468-2793

CITY BLDG. F.B. 234

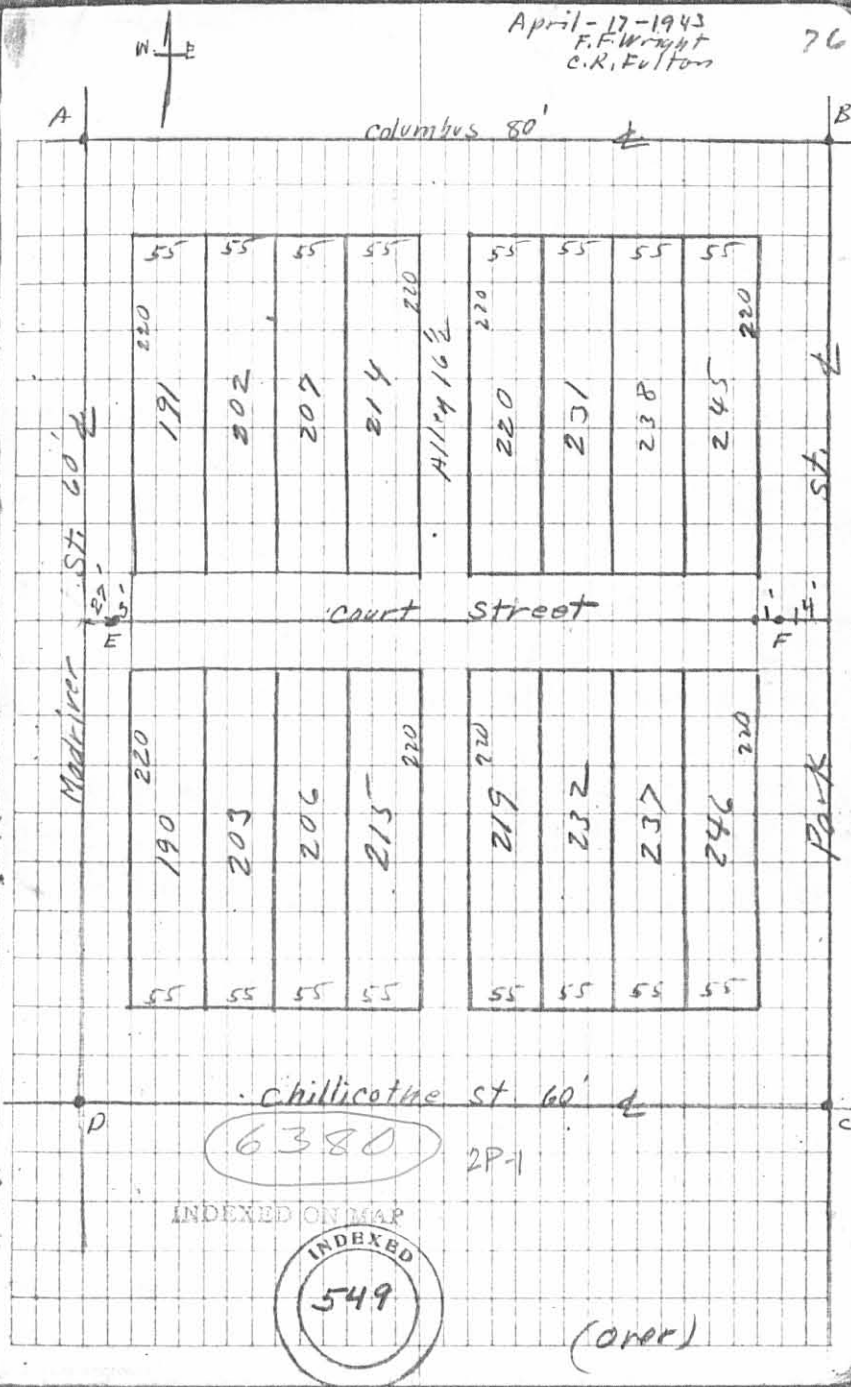
Royer Survey
Pt. Lots 190-203-206

	Plat			Per # 100 feet
A	Copper	SCREW		
B				
C				
D				
AB	501.5	501.5	50.35	.0795
DC	501.5	501.6	+0.10	.0227
AD	526.5	527.15	+0.65	.1477
BC	526.5	527.00	+0.50	.1136

Shroyer to Royer
Vol. 169 - Page 203

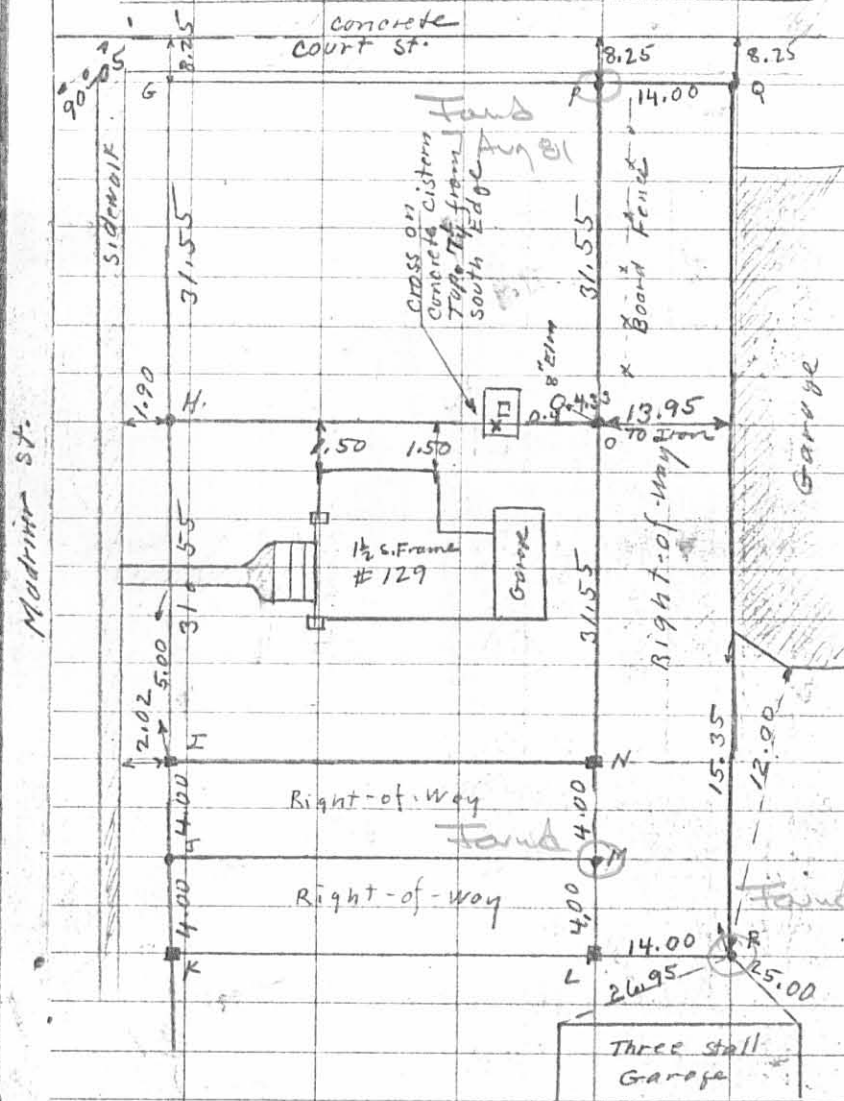
Huffer Survey Book 198 Page 72

E. Copper Point 27' from & Madrine
3' from Property Line
F. Copper Point 14' from & Park
1' from Property Line



Royer Survey

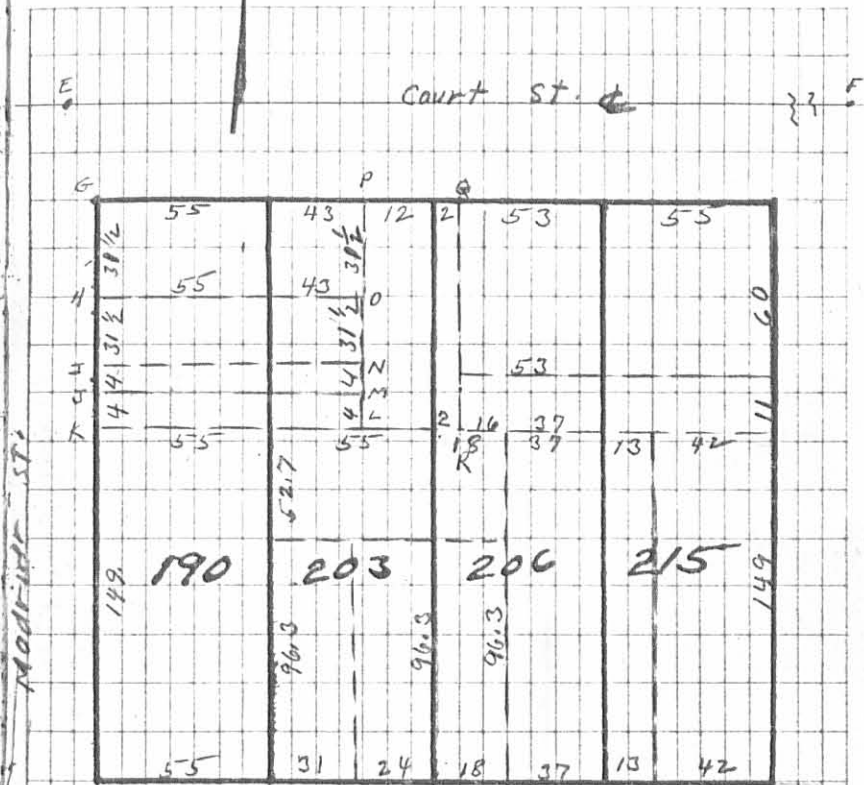
W. E.



4-17-43

27

W. E.



Court St.

- G - Temporary Point
- H 1/2" Iron 30"
- I 2" x 2" Hub 24"
- J 1/2" Iron 30"
- K 2" x 2" Hub 24"
- L 2" x 2" Hub 12"
- M 1/2" Iron 30"
- N 2" x 2" Hub 12"
- O 1/2" Iron 30"
- P 1/2" Iron 12"
- Q Cross on concrete
- R 1/2" Iron 15"



INDEXED ON MAP
Q300 2P-2

3-24-15

Lee Surveying and Mapping Co., Inc.



Land Surveys • Topography • Subdivisions • Construction Layout

117 N. Madriver St.
Bellefontaine OH 43311



Phone: (937) 593-7335
Fax: (937) 593-7444
surveys@lsminc.us

LINK CONSTRUCTION GROUP, INC. 0.075 ACRE TRACT A

Lying in the City of Bellefontaine, Lake Township, Logan County, Ohio.

Being out of the Link Construction Group, Inc., part of Lots 206 and 215 of the original plat of Bellefontaine (Plat Cabinet A, Slide 1) as deeded and described in Official Record 968, Page 647 of the Logan County Records of Deeds and being more particularly described as follows:

Commencing on a 5/8 inch iron rod found on the intersection of the west right-of-way of Park Street and the south right-of-way of Court Avenue.

THENCE, with the south right-of-way of Court Avenue (16.5 feet wide), S 88°-00'-00"W, a distance of 320.21 feet to a railroad spike set at the TRUE POINT OF BEGINNING, passing a MAG nail set at 266.21 feet.

THENCE, S 02°-00'-31"E, a distance of 60.25 feet to a railroad spike set.

THENCE, with the lines of the Board of Commissioners of Logan County, Ohio, part of Lots 206 and 215 (Vol. 386, Pg. 991, Tract II), the following two courses:

S 87°-54'-37"W, a distance of 54.00 feet to a 5/8 inch iron rod set.

N 02°-00'-31"W, a distance of 60.33 feet to a point on the south right-of-way of Court Avenue, referenced by a MAG nail set bearing N 02°-00'-31"W, a distance of 1.00 feet.

THENCE, with the south right-of-way of Court Avenue, N 88°-00'-00"E, a distance of 54.00 feet to the point of beginning.

Containing 0.075 acre.

Property is subject to any and all previous easements and rights-of-way of record.

The basis for bearings is the south right-of-way of Court Avenue, being N 88°-00'-00"E, and all other bearings are from angles and distances measured in a field survey by Lee Surveying and Mapping Co., Inc. on February 11, 2015, revised March 16, 2015.



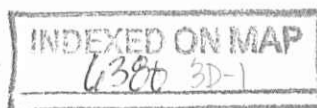
ORIGINAL STAMP IN GREEN

Description prepared by:

William K. Bruce

William K. Bruce
Professional Surveyor 7437
March 16, 2015

58710215REV



2-23-15

Lee Surveying and Mapping Co., Inc.



Land Surveys • Topography • Subdivisions • Construction Layout

117 N. Madriver St.
Bellefontaine OH 43311



Phone: (937) 593-7335
Fax: (937) 593-7444
surveys@lsminc.us

LINK CONSTRUCTION GROUP, INC. 0.075 ACRE TRACT B

Lying in the City of Bellefontaine, Lake Township, Logan County, Ohio.

Being out of the Link Construction Group, Inc., part of Lot 215 of the original plat of Bellefontaine (Plat Cabinet A, Slide 1) as deeded and described in Official Record 968, Page 647 of the Logan County Records of Deeds and being more particularly described as follows:

Commencing on a 5/8 inch iron rod found on the intersection of the west right-of-way of Park Street and the south right-of-way of Court Avenue.

THENCE, with the south right-of-way of Court Avenue (16.5 feet wide), S 88°-00'-00"W, a distance of 266.21 feet to a MAG nail set at the TRUE POINT OF BEGINNING.

THENCE, with the west right-of-way of a 16.5 feet wide alley, S 02°-00'-31"E, a distance of 60.16 feet to a railroad spike set.

THENCE, with a north line of the Board of Commissioners of Logan County, Ohio, part of Lot 215 (Vol. 386, Pg. 991, Tract II), S 87°-54'-37"W, a distance of 54.00 feet to a railroad spike set.

THENCE, N 02°-00'-31"W, a distance of 60.25 feet to a railroad spike set on the south right-of-way of Court Avenue.

THENCE, with the south right-of-way of Court Avenue, N 88°-00'-00"E, a distance of 54.00 feet to the point of beginning.

Containing 0.075 acre.

Property is subject to any and all previous easements and rights-of-way of record.

The basis for bearings is the south right-of-way of Court Avenue, being N 88°-00'-00"E, and all other bearings are from angles and distances measured in a field survey by Lee Surveying and Mapping Co., Inc. on February 11, 2015.

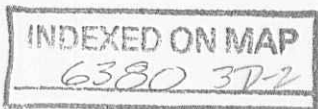


ORIGINAL STAMP IN GREEN

Description prepared by:

William K. Bruce
Professional Surveyor 7437
February 12, 2015

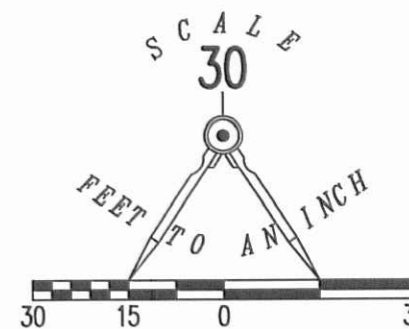
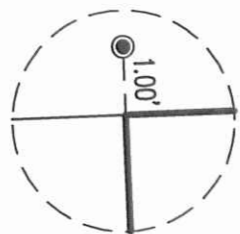
58710215



3-24-15

APPROVED

DETAIL
NOT TO SCALE



COURT AVENUE (16.5')

(BASIS FOR BEARINGS)
N 88°00'00" E

PARK STREET (35')

MADRIVER STREET (60')

TRACT A
0.075
ACRE

TRACT B
0.075
ACRE

16.5' ALLEY

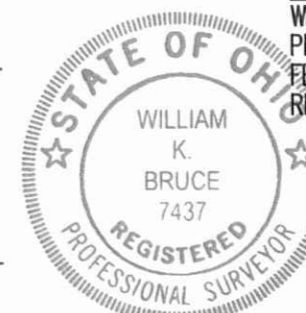
BOARD OF COUNTY COMMISSIONERS
OF LOGAN COUNTY, OHIO
P/O LOTS 203, 206 & 215
VOL. 386, PG. 991
TRACT II

SURVEY OF TWO TRACTS OUT OF THE
LINK CONSTRUCTION GROUP, INC.
PART OF LOTS 206 AND 215
ORIGINAL PLAT OF BELLEFONTAINE
PLAT CABINET A, SLIDE 1
OFFICIAL RECORD 968, PAGE 647
CITY OF BELLEFONTAINE
LAKE TOWNSHIP
LOGAN COUNTY, OHIO

SURVEYED BY:

William K. Bruce

WILLIAM K. BRUCE
PROFESSIONAL SURVEYOR 7437
FEBRUARY 11, 2015
REVISED MARCH 16, 2015 (TO SHOW MONUMENTATION SET)



ORIGINAL STAMP IN GREEN

COPYRIGHT 2015 BY:
LEE SURVEYING & MAPPING CO., INC.
117 North Madriver Street
BELLEFONTAINE, OHIO 43311
(937) 593-7335
WWW.LSMINC.US
surveys@lsminc.us

KSS D0215 58710215REV L-5871-3

LEGEND:

- ⊙ 1/2 INCH IRON PIPE FOUND
- ⊕ 3/4 INCH IRON PIPE FOUND
- 5/8 INCH IRON ROD FOUND
- MAG NAIL SET
- ⊕ RAILROAD SPIKE SET
- 5/8 INCH IRON ROD SET WITH PLASTIC I.D. CAP STAMPED "LSM 7437"

2 WORKING DAYS
BEFORE YOU DIG
CALL TOLL FREE 800-362-2764
OHIO UTILITIES PROTECTION SERVICE.

CHILlicothe AVENUE (60')

INDEXED ON MAP
6300 3P