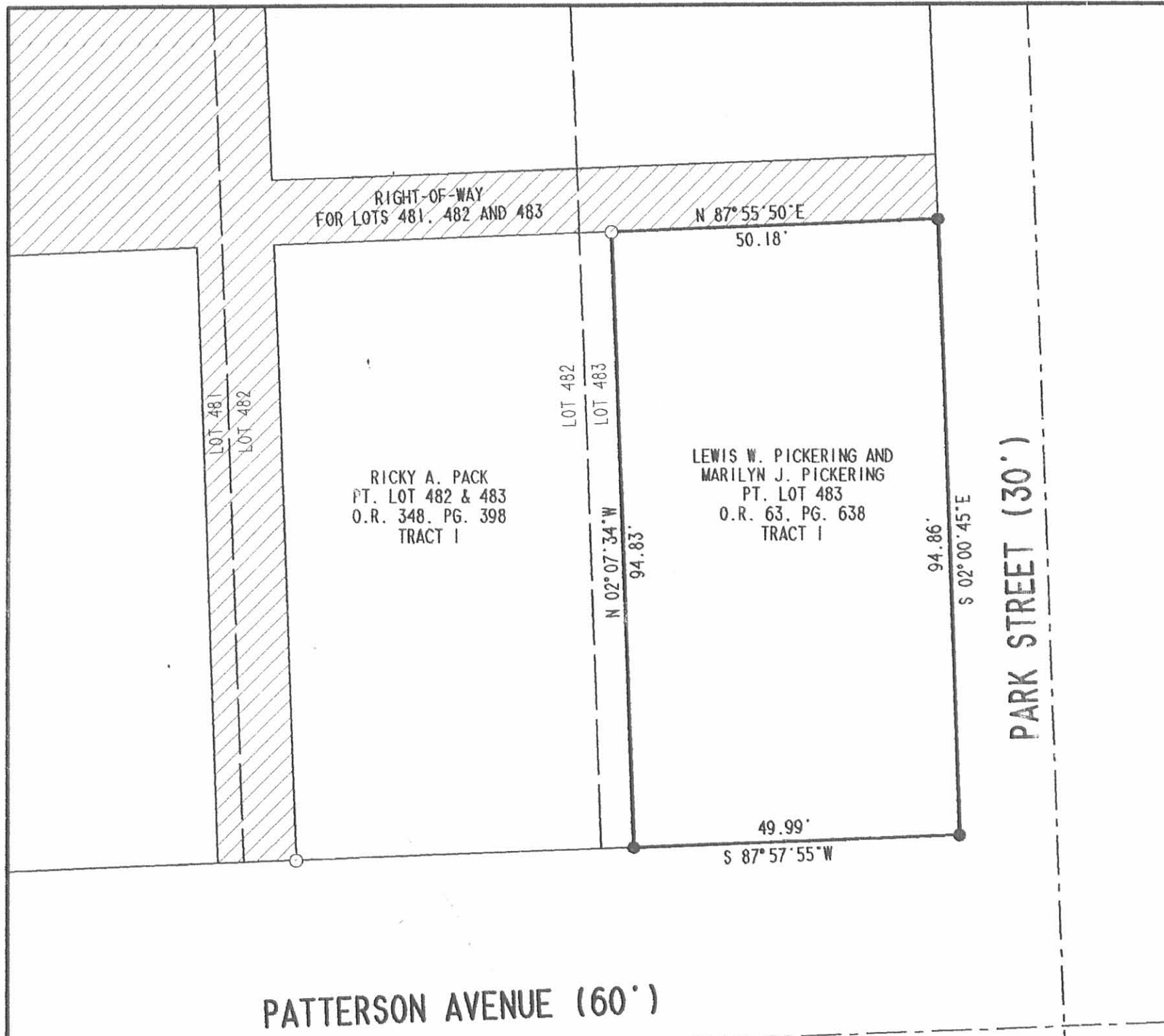
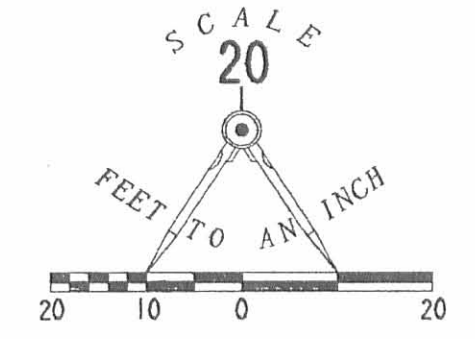


RD 5-22-03 SMY DL



LEGEND

- 5/8 INCH IRON ROD SET
- 5/8 INCH IRON ROD FOUND



RETRACEMENT SURVEY OF THE
LEWIS W. PICKERING AND
MARILYN J. PICKERING
PART OF LOT 483
OFFICIAL RECORD 63, PAGE 638, TRACT I
McCULLOUGH ADDITION
PLAT CABINET A, SLIDE 5
CITY OF BELLEFONTAINE
LAKE TOWNSHIP
LOGAN COUNTY, OHIO



ORIGINAL STAMP IN GREEN

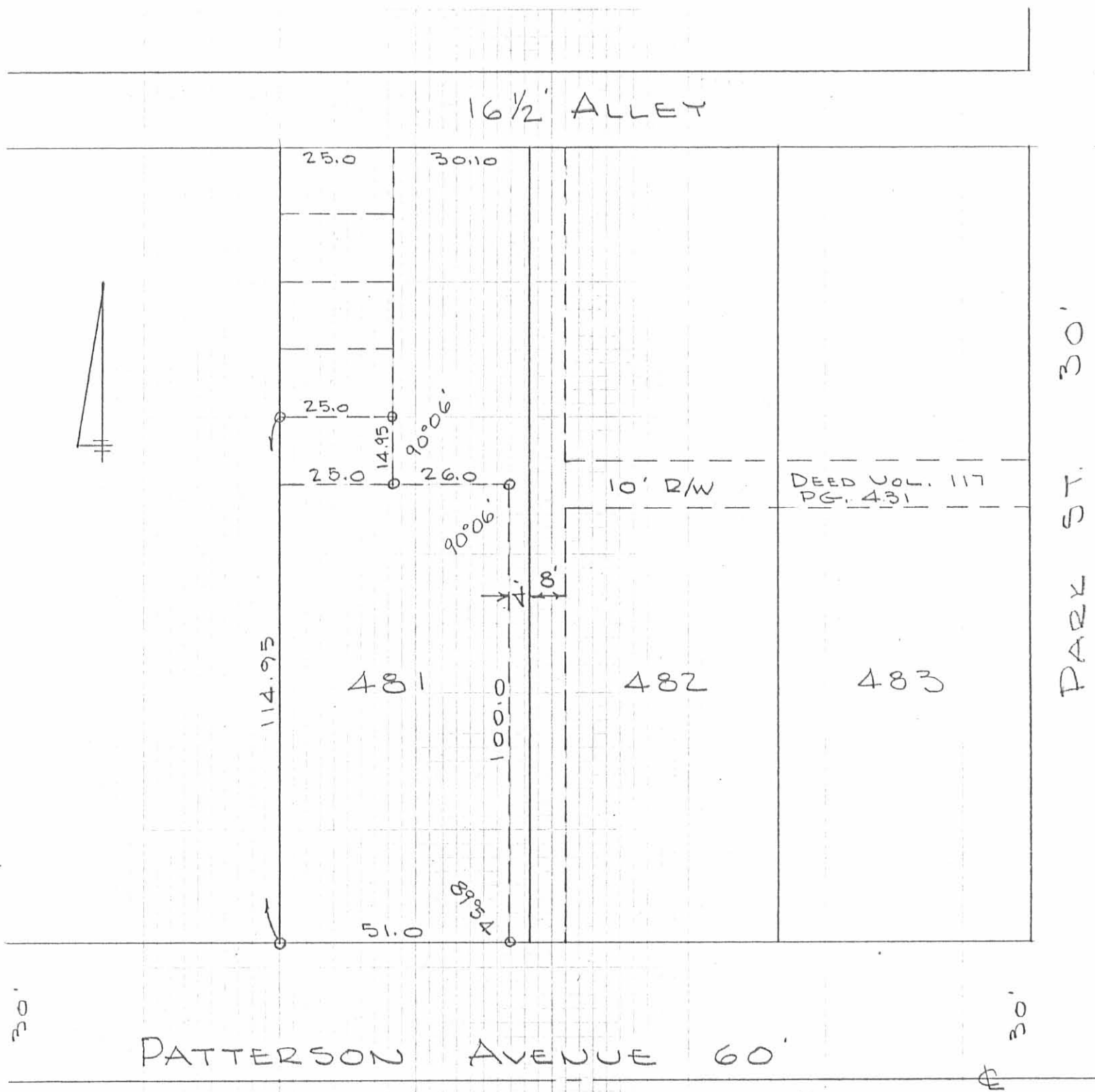
SURVEYED BY:
[Signature]
JEFFREY I. LEE
PROFESSIONAL SURVEYOR 6359
MAY 6, 2003

COPYRIGHT 2003 BY:
LEE SURVEYING & MAPPING CO., INC.
117 North Madriver Street
BELLEFONTAINE, OHIO 43311
(937) 593-7335

D 407 LWSPCKNG L-3580-3

2 WORKING DAYS
BEFORE YOU DIG
CALL TOLL FREE **800-362-2764**
OHIO UTILITIES PROTECTION SERVICE.

INDEXED ON MAP
6549 IP



SURVEY OF PART LOT 481
 BELLEFONTAINE, OHIO
 JUNE 29, 1969
 SCALE 1" = 30'
 O = 5/8" ϕ BAR SET

INDEXED ON MAP
 6549 2P

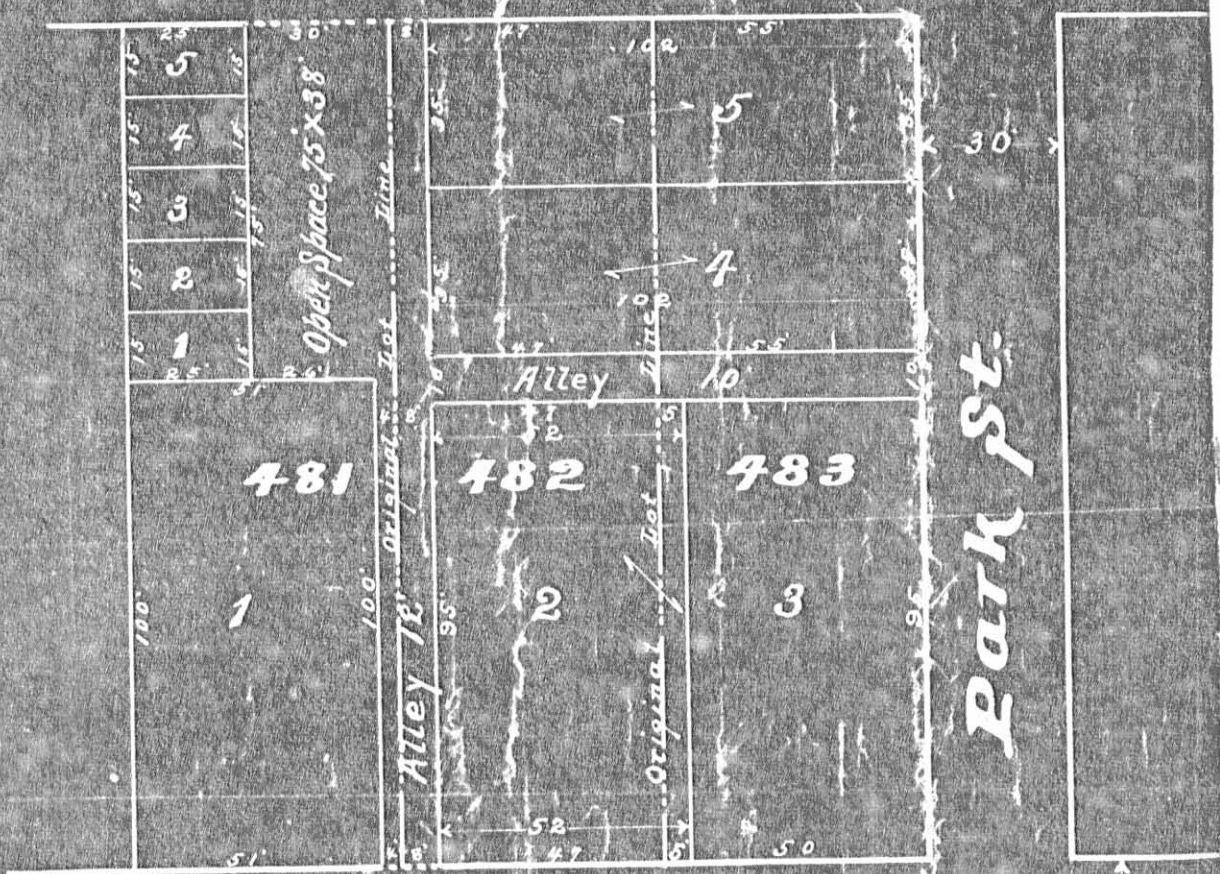
DAN L. DODSON
 REG. SURVEYOR 4270
 BELLEFONTAINE, O.
 F.B. 16/23

Putcells Subdivision of

Lots 481, 482, 483

Bellefontaine, Ohio, Sept. 11, 1916.

Public Alley 16 1/2'



Patterson Ave.

INDEXED ON MAP
6549 3P

Lot 481 Contd.

○ = 5/8" φ Bar Set
 □ = fld Hub Set

INDEXED ON MAP
 6549

