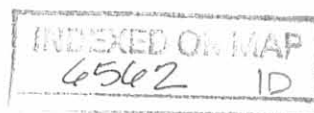


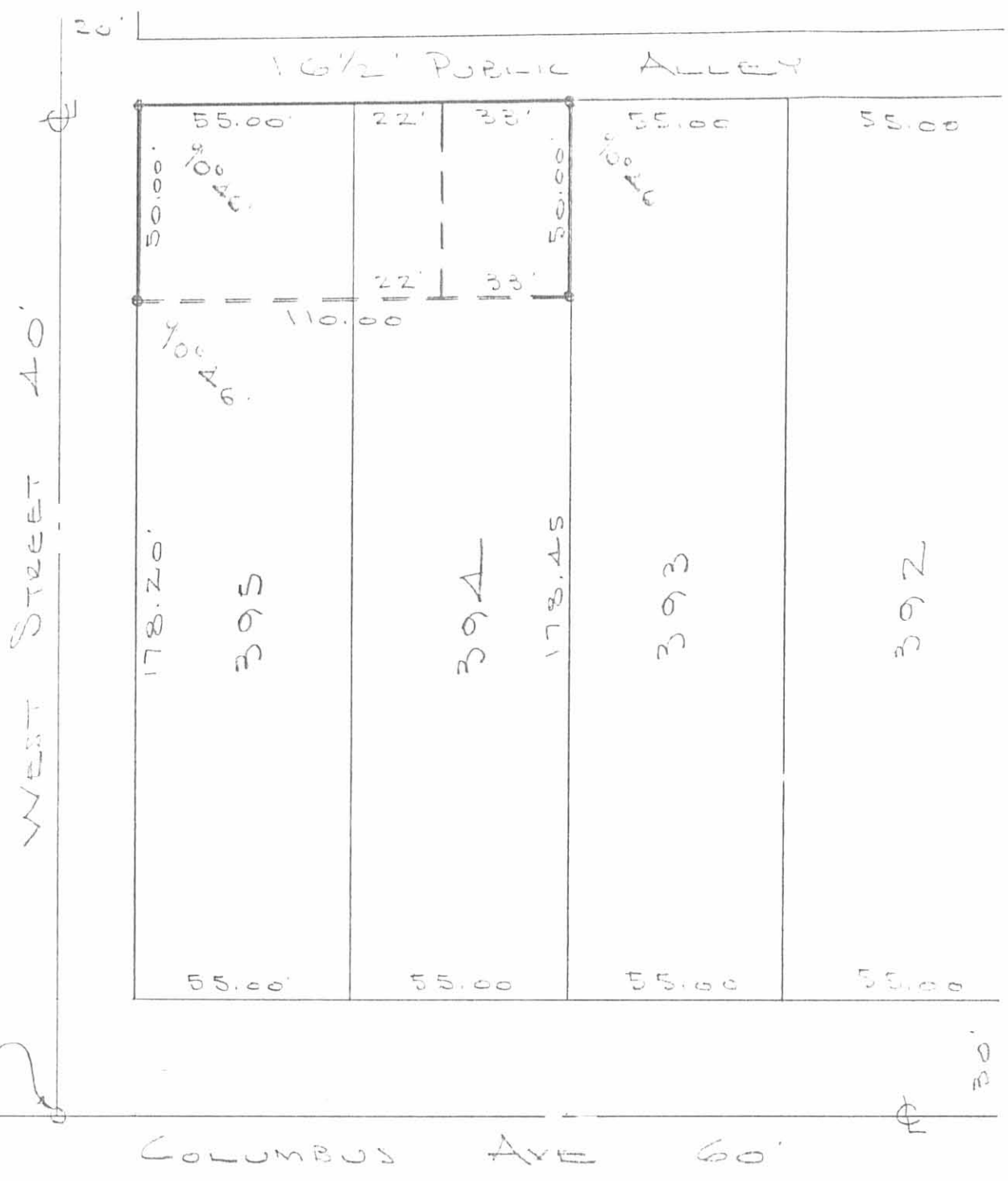
PART LOT 394  
BELLEFONTAINE, OHIO  
SEPTEMBER 15, 1980

The following described real estate situated in the City of Bellefontaine, County of Logan, State of Ohio and being part of lot No.394 of Western Bellefontaine as shown on Logan County Recorders Plat Cabinet A, Slide 3 and more particularly described as follows:

Beginning at an iron bar at the northeast corner of said lot 394; thence with the east line of said lot southerly 50.00 feet to an iron bar; thence westerly, parallel to the north line of said lot, 33 feet; thence northerly, parallel to the east line of said lot, 50.00 feet to the north line of said lot; thence with said north line easterly 33 feet to the place of beginning.

*Note Easement for Access*





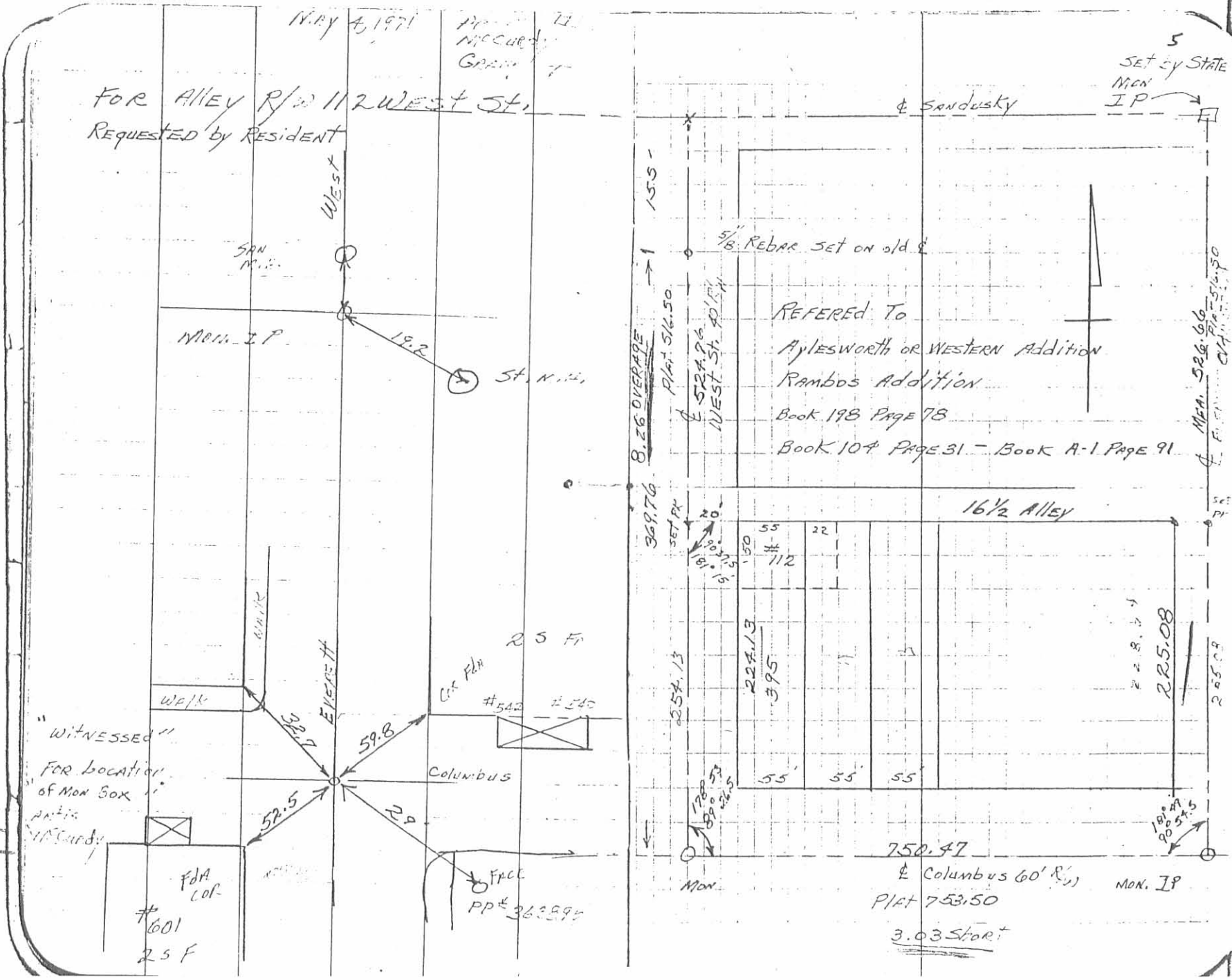
1" = 40'  
FOUND

SURVEY OF  
 PART LOT 394 - 395  
 BELLEFONTAINE, OHIO  
 SEPTEMBER 15, 1980  
 SCALE 1" = 40'  
 \* = 5/8" BAR SET

(6562) IP REF: CITY FB. 213/24  
 INDEXED ON MAP

DAN L. DOOSON  
 REG. SURVEYOR 4270  
 BELLEFONTAINE, O.  
 BK 21/73

FILE L-763



INDEXED ON MAP 6562 2P

PART LOT 394-395  
BELLEFONTAINE, OHIO

A = City Mon 1"  $\phi$  BAR FOUND  
B = " " " "  
C = 5/8"  $\phi$  BAR SET

$\Phi$  Columbus To  $\Phi$  16 1/2' ALLEY  
= 524.7 - 258.25 = 266.45  
ON  $\Phi$  OF WEST STREET

$\Phi$  Columbus To  $\Phi$  16 1/2' ALLEY  
= 526.4' - 258.25 = 268.15'  
ON  $\Phi$  OF EVERETT ST.

See City F.B. 273 pg. 24

PK NAILS FOUND ON  $\Phi$  OF WEST ST.  
254.13' N. OF  $\Phi$  Columbus  $\Phi$   
@ 318.70' USED FOR  $\Phi$  -  
MON @  $\Phi$  WEST & SANDUSKY  
HAS BEEN REMOVED - NAIL @  
254.13 SET BY D.I.D. WHEN MON  
@ SANDUSKY WAS EXISTING.

INDEXED ON MAP  
6562

D. DODSON  
C. DILL

9/15/80

73

