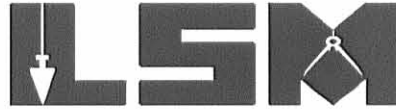


# Lee Surveying and Mapping Co., Inc.

Land Surveys • Topography • Subdivisions • Construction Layout

117 N. Madriver St.  
Bellefontaine OH 43311



Phone: (937) 593-7335  
Fax: (937) 593-7444

## L.P.Z. CONSTRUCTION CO., INC. 5.831 ACRES

Lying in Virginia Military Surveys 3683 and 4399, City of Bellefontaine, Lake Township, Logan County, Ohio.

Being out of the L.P.Z. Construction Co., Inc. original 45.83 acre tract as deeded and described in Volume 332, Page 862, including all of a buffer lot between Lot 4518 and Lot 4519 of Brookwood Addition No. 9 as recorded in Plat Cabinet A, Slide 663 of the Logan County Records of Deeds and being more particularly described as follows:

Beginning at a MAG nail set on the west right-of-way extended of Willow Drive (60 feet wide), at the southeast corner of Lot 4519 of Brookwood Addition No. 9 (Plat Cabinet A. Slide 663).

THENCE, with the west right-of-way extended of Willow Drive and the east line of Lot 4519, N 20°-41'-32" W, a distance of 12.00 feet to a 5/8 inch iron rod set.

THENCE, with the south line of Willow Drive, N 69°-18'-28" E, a distance of 60.00 feet to a 5/8 inch iron rod set.

THENCE, with the west line of Lot 4518, S 20°-41'-32" E, a distance of 2.00 feet to a 5/8 inch iron rod set on the southwest corner of Lot 4518.

THENCE, with the south line of Lot 4518 of Brookwood Addition No. 9 and the south line of the William C. Carr 0.035 acre tract (O.R. 452, Pg. 411, Tract II), N 67°-24'-42" E, a distance of 123.10 feet to a point in a creek.

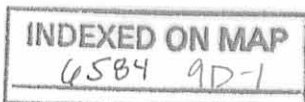
THENCE, with the east line of the said 0.035 acre tract, N 30°-39'-03" W, a distance of 25.00 feet to a 5/8 inch iron rod found.

THENCE, with the south line of The First Church of God, Bellefontaine, Ohio, 4.400 acre tract (O.R. 614, Pg. 330), N 54°-12'-00" E, a distance of 218.85 feet to a 5/8 inch iron rod set.

THENCE, with the City of Bellefontaine Corporation Line and the west line of the Todd M. Chamberlain original 3.315 acre tract (O.R. 612, Pg. 244, Tract I), S 6°-36'-05" E, a distance of 494.98 feet to a P.K. nail found in the center-line of County Highway 235, passing a 5/8 inch iron rod set at 464.98 feet.

THENCE, with the center-line of County Highway 235, S 82°-55'-54" W, a distance of 347.59 feet to a MAG nail set, passing a P.K. nail found at 255.20 feet.

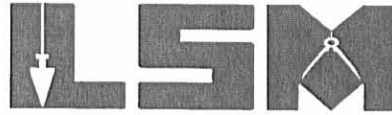
THENCE, with the center-line of County Highway 235, S 30°-48'-12" W, a distance of 390.80 feet to a MAG nail set, passing a P.K. nail found at 93.63 feet.



# Lee Surveying and Mapping Co., Inc.

Land Surveys • Topography • Subdivisions • Construction Layout

117 N. Madriver St.  
Bellefontaine OH 43311



Phone: (937) 593-7335  
Fax: (937) 593-7444

THENCE, with the easterly right-of-way extended and the east right-of-way of Newford Drive (60 feet wide), N 17°-23'-06" W, a distance of 91.46 feet to a 5/8 inch iron rod set, passing a MAG nail set at 40.24 feet.

THENCE, with the easterly right-of-way of Newford Drive, a curve to the left having a central angle of 35°-55'-43", a radius of 338.10 feet, an arc length of 212.01 feet and a chord bearing N 35°-21'-39" W, a distance of 208.56 feet to a 5/8 inch iron rod set.

THENCE, with the east right-of-way of Newford Drive, N 53°-20'-56" W, a distance of 106.67 feet to a point, passing a 5/8 inch iron rod set at 86.67 feet.

THENCE, with the southeasterly line of Lot 4520 of Brookwood Addition No. 9 (also Willowbrook Commons Condominiums, Plat Cabinet A, Slide 675) N 37°-40'-04" E, a distance of 150.96 feet to a point, referenced by a 5/8 inch iron rod set N 55°-52'-29" E, a distance of 10.00 feet.

THENCE, S 53°-20'-54" E, a distance of 63.54 feet to a 5/8 inch iron rod set.

THENCE, N 55°-52'-29" E, a distance of 325.34 feet to a 5/8 inch iron rod set.

THENCE, N 20°-41'-32" W, a distance of 61.69 feet to the point of beginning.

Containing 5.831 acres, of which 0.510 acre is within the highway right-of-way, 0.444 acre is within Virginia Military Survey 4399 and 5.387 acres are within Virginia Military Survey 3683.

The basis for bearings is the south line of Lot 4519, being N 55°-52'-29" E, and all other bearings are from angles and distances measured in a field survey by Lee Surveying and Mapping Co., Inc. on December 23, 2002.

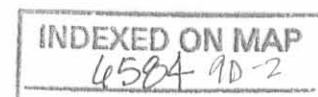
Description prepared by:



ORIGINAL STAMP IN GREEN

A handwritten signature in black ink, appearing to read 'Jeffrey I. Lee'.  
Jeffrey I. Lee  
Professional Surveyor 6359  
January 18, 2003

L-3498



REC'D 1-30-03 SMJ OK

# Lee Surveying and Mapping Co., Inc.

Land Surveys • Topography • Subdivisions • Construction Layout

117 N. Madriver St.  
Bellefontaine OH 43311



Phone: (937) 593-7335  
Fax: (937) 593-7444

## L.P.Z. CONSTRUCTION CO., INC. 0.472 ACRES

Lying in Virginia Military Surveys 3683 and 4399, City of Bellefontaine, Lake Township, Logan County, Ohio.

Being out of the L.P.Z. Construction Co., Inc. original 45.83 acre tract as deeded and described in Volume 332, Page 862, of the Logan County Records of Deeds and being more particularly described as follows:

Beginning at a MAG nail set on the west right-of-way extended of Willow Drive (60 feet wide), at the southeast corner of Lot 4519 of Brookwood Addition No. 9 (Plat Cabinet A. Slide 663).

THENCE, with the west right-of-way extended of Willow Drive, S 20°-41'-32" E, a distance of 61.69 feet to a 5/8 inch iron rod set.

THENCE, S 55°-52'-29" W, a distance of 325.34 feet to a 5/8 inch iron rod set.

THENCE, N 53°-20'-54" W, a distance of 63.54 feet to a point.

THENCE, with the southeasterly line of Lot 4520 and Lot 4519 of Brookwood Addition No. 9, N 55°-52'-29" E, a distance of 360.59 feet to the point of beginning, passing a 5/8 inch iron rod set at 10.00 feet.

Containing 0.472 acres, of which 0.020 acre is within Virginia Military Survey 4399 and 0.452 acre is within Virginia Military Survey 3683.

The basis for bearings is the south line of Lot 4519, being N 55°-52'-29" E, and all other bearings are from angles and distances measured in a field survey by Lee Surveying and Mapping Co., Inc. on December 23, 2002.

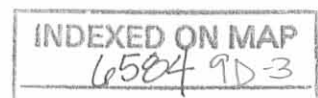
Description prepared by:



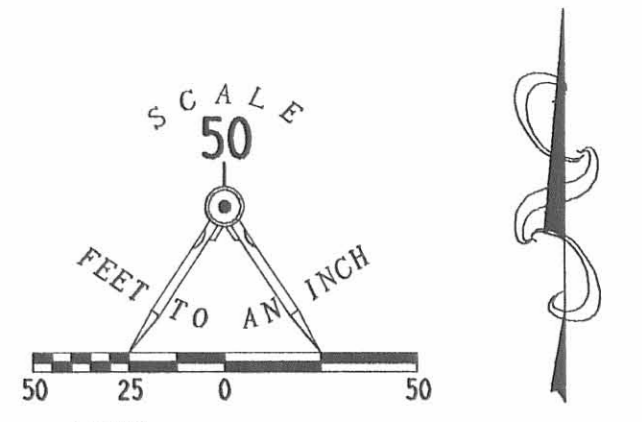
ORIGINAL STAMP IN GREEN

Jeffrey I. Lee  
Professional Surveyor 6359  
January 18, 2003

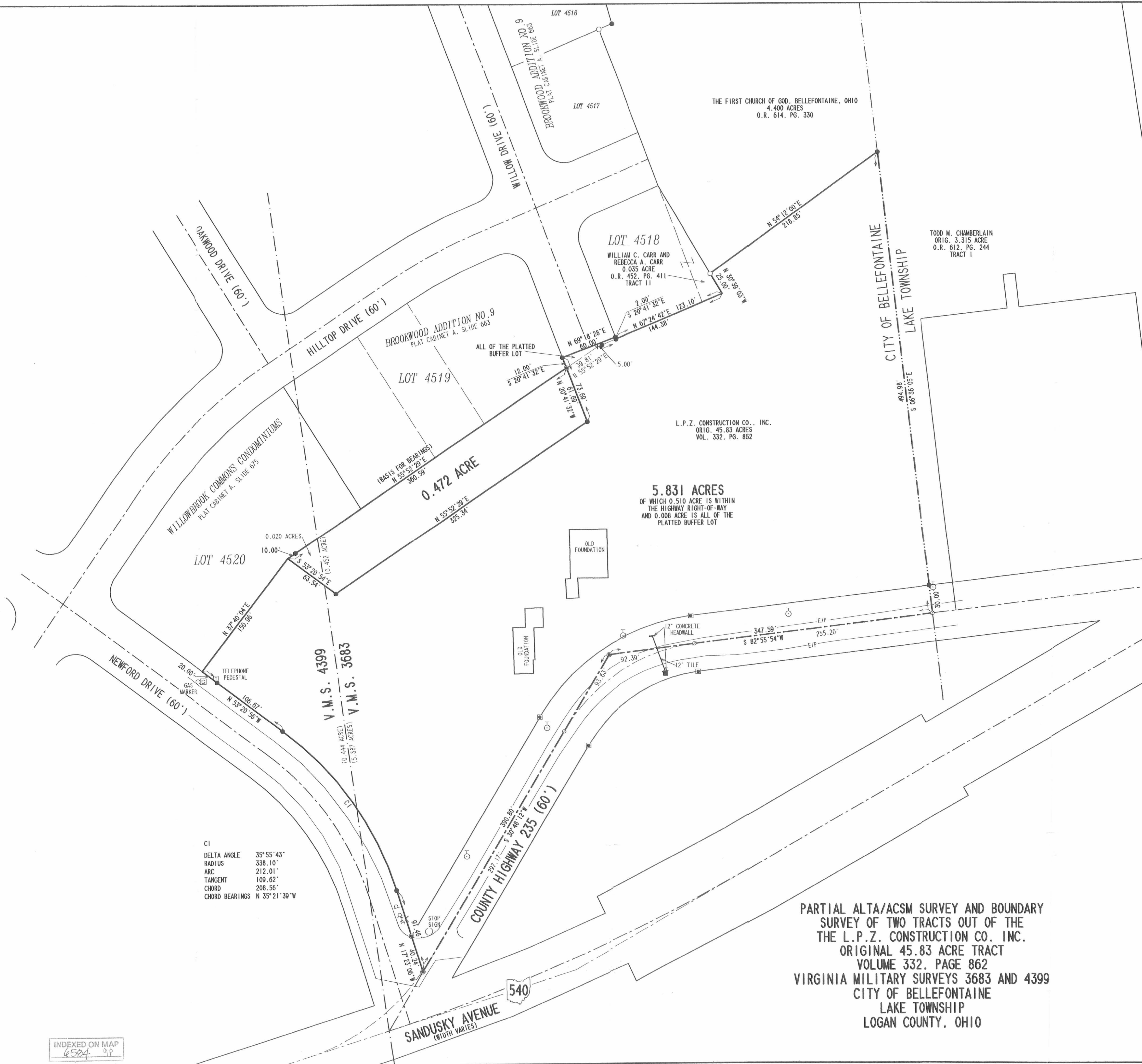
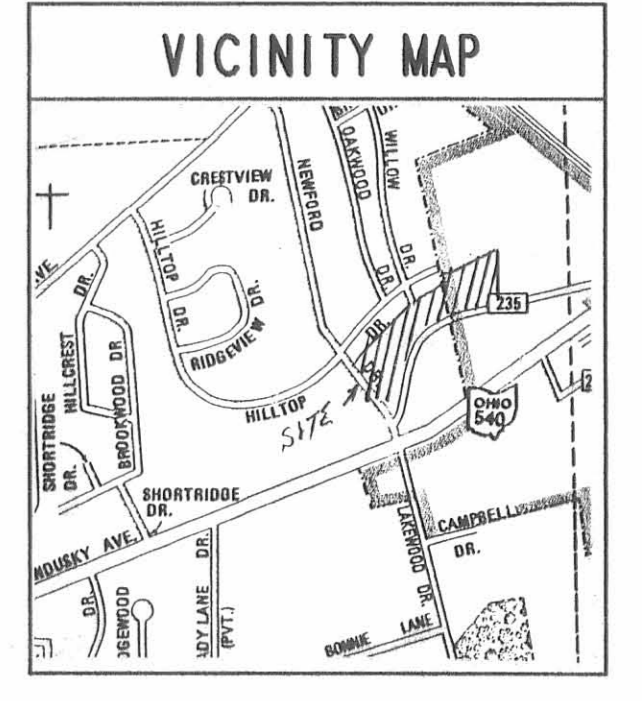
L-3498







- LEGEND
- 5/8 INCH IRON ROD SET
  - 5/8 INCH IRON ROD FOUND
  - MAG NAIL SET
  - P.K. NAIL FOUND
  - ⊠ CONCRETE RIGHT-OF-WAY MONUMENT FOUND
  - UTILITY POLE



CI	
DELTA ANGLE	35° 55' 43"
RADIUS	338.10'
ARC	212.01'
TANGENT	109.62'
CHORD	208.56'
CHORD BEARINGS	N 35° 21' 39" W

**CERTIFICATION**  
 THIS IS TO STATE THAT THIS MAP OR PLAT AND THE SURVEY ON WHICH IT IS BASED WERE MADE IN ACCORDANCE WITH MINIMUM STANDARD DETAIL REQUIREMENTS FOR ALTA/ACSM LAND TITLE SURVEYS, JOINTLY ESTABLISHED AND ADOPTED BY ALTA, ACSM AND NSPS IN 1999, AND INCLUDES ITEMS 1, 2, 4, 7a, 8, 10, 11a AND 13 OF TABLE A THEREOF, PURSUANT TO THE ACCURACY STANDARDS AS ADOPTED BY ALTA, NSPS, AND ACSM AND IN EFFECT ON THE DATE OF THIS CERTIFICATION. UNDERSIGNED FURTHER CERTIFIES THAT THE POSITIONAL UNCERTAINTIES RESULTING FROM THE SURVEY MEASUREMENTS MADE ON THE SURVEY DO NOT EXCEED THE ALLOWABLE POSITIONAL TOLERANCE. NO RECORDS OF EASEMENT OR RESTRICTIONS WERE SUPPLIED BY THE CLIENT

**PARTIAL ALTA/ACSM SURVEY AND BOUNDARY SURVEY OF TWO TRACTS OUT OF THE THE L.P.Z. CONSTRUCTION CO., INC. ORIGINAL 45.83 ACRE TRACT VOLUME 332, PAGE 862 VIRGINIA MILITARY SURVEYS 3683 AND 4399 LAKE TOWNSHIP LOGAN COUNTY, OHIO**



SURVEYED BY:  
 JEFFREY I. LEE  
 PROFESSIONAL SURVEYOR 6359  
 DECEMBER 23, 2002

COPYRIGHT 2003 BY:  
 LEE SURVEYING & MAPPING CO., INC.  
 117 North Medivac Street  
 BELLEFONTAINE, OHIO 43311  
 (937) 693-7336

2 WORKING DAYS  
**BEFORE YOU DIG**  
 CALL TOLL FREE 800-362-2764  
 OHIO UTILITIES PROTECTION SERVICE

INDEXED ON MAP  
 6524 9P

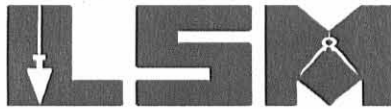


REC'D 6-21-04 SML/ML

# Lee Surveying and Mapping Co., Inc.

Land Surveys • Topography • Subdivisions • Construction Layout

117 N. Madriver St.  
Bellefontaine OH 43311



Phone: (937) 593-7335  
Fax: (937) 593-7444

## WBC Building Company 2.680 ACRES

Lying in Virginia Military Surveys 3683 and 4399, City of Bellefontaine, Lake Township, Logan County, Ohio.

Being out of the WBC Building Company 6.041 acre tract as deeded and described in Official Record 718, Page 414 of the Logan County Records of Deeds and being more particularly described as follows:

Beginning at a MAG nail set on the west right-of-way extended of Willow Drive (60 feet wide), at the southeast corner of Lot 4519 of Brookwood Addition No. 9 (Plat Cabinet A. Slide 663).

THENCE, with the east line of the Jeffrey L. Zell 0.472 acre tract (O.R. 702, Pg. 308), S 20°-41'-32"E, a distance of 61.69 feet to a 5/8 inch iron rod set at the TRUE POINT OF BEGINNING.

THENCE, S 4°-51'-11"E, a distance of 250.34 feet to a MAG nail set, passing a 5/8 inch iron rod set at 240.75 feet.

THENCE, with the center-line of County Highway 235 (60 feet wide), S 30°-48'-12" W, a distance of 390.80 feet to a MAG nail set, passing a P.K. nail found at 93.63 feet.

THENCE, with the easterly right-of-way extended and the east right-of-way of Newford Drive (60 feet wide), N 17°-23'-06" W, a distance of 91.46 feet to a 5/8 inch iron rod set, passing a MAG nail set at 40.24 feet.

THENCE, with the easterly right-of-way of Newford Drive, a curve to the left having a central angle of 35°-55'-43", a radius of 338.10 feet, an arc length of 212.01 feet and a chord bearing N 35°-21'-39" W, a distance of 208.56 feet to a 5/8 inch iron rod set.

THENCE, with the east right-of-way of Newford Drive, N 53°-20'-56" W, a distance of 106.67 feet to a point, passing a 5/8 inch iron rod set at 86.67 feet.

THENCE, with the southeasterly line of Lot 4520 of Brookwood Addition No. 9 (also Willowbrook Commons Condominiums, Plat Cabinet A, Slide 675) N 37°-40'-04" E, a distance of 150.96 feet to a point, referenced by a 5/8 inch iron rod set N 55°-52'-29" E, a distance of 10.00 feet.

THENCE, with the west and south lines of the aforesaid 0.472 acre tract, the following two courses:

S 53°-20'-54" E, a distance of 63.54 feet to a 5/8 inch iron rod set.

N 55°-52'-29" E, a distance of 325.34 feet to the point of beginning.

Containing 2.680 acres, of which 0.271 acre is within the highway right-of-way, 0.444 acre is within Virginia Military Survey 4399 and 2.236 acres are within Virginia Military Survey 3683.

The basis for bearings is the south line of Lot 4519, being N 55°-52'-29" E, and all other bearings are from angles and distances measured in a field survey by Lee Surveying and Mapping Co., Inc. on December 23, 2002 and June 18, 2004.

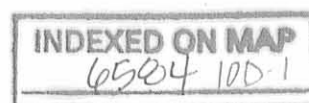


ORIGINAL STAMP IN GREEN

Description prepared by:

Jeffrey I. Lee  
Professional Surveyor 6359  
June 18, 2004

L-3498



REC'D 6-21-04 SMMOK  
**Lee Surveying and Mapping Co., Inc.**

Land Surveys • Topography • Subdivisions • Construction Layout

117 N. Madriver St.  
Bellefontaine OH 43311



Phone: (937) 593-7335  
Fax: (937) 593-7444

**WBC Building Company  
3.361 ACRES**

Lying in Virginia Military Survey 3683, City of Bellefontaine, Lake Township, Logan County, Ohio.

Being out of the WBC Building Company 6.041 acre tract as deeded and described in Official Record 718, Page 414, including all of a buffer lot between Lot 4518 and Lot 4519 of Brookwood Addition No. 9 as recorded in Plat Cabinet A, Slide 663 of the Logan County Records of Deeds and being more particularly described as follows:

Beginning at a MAG nail set on the west right-of-way extended of Willow Drive (60 feet wide), at the southeast corner of Lot 4519 of Brookwood Addition No. 9 (Plat Cabinet A. Slide 663).

THENCE, with the west right-of-way extended of Willow Drive and the east line of Lot 4519, N 20°-41'-32" W, a distance of 12.00 feet to a 5/8 inch iron rod set.

THENCE, with the south line of Willow Drive, N 69°-18'-28" E, a distance of 60.00 feet to a 5/8 inch iron rod set.

THENCE, with the west line of Lot 4518, S 20°-41'-32" E, a distance of 2.00 feet to a 5/8 inch iron rod set on the southwest corner of Lot 4518.

THENCE, with the south line of Lot 4518 of Brookwood Addition No. 9 and the south line of the William C. Carr 0.035 acre tract (O.R. 452, Pg. 411, Tract II), N 67°-24'-42" E, a distance of 123.10 feet to a point in a creek.

THENCE, with the east line of the said 0.035 acre tract, N 30°-39'-03" W, a distance of 25.00 feet to a 5/8 inch iron rod found.

THENCE, with the south line of The First Church of God, Bellefontaine, Ohio, 4.498 acre tract (O.R. 718, Pg. 412), N 54°-12'-00" E, a distance of 234.39 feet to a 5/8 inch iron rod set.

THENCE, with the City of Bellefontaine Corporation Line and the west line of the Todd M. Chamberlain original 3.315 acre tract (O.R. 612, Pg. 244, Tract I), S 7°-51'-12"E, a distance of 500.59 feet to a MAG nail set in the center-line of County Highway 235, passing a 5/8 inch iron rod set at 470.59 feet.

THENCE, with the center-line of County Highway 235 (60 feet wide), S 82°-38'-29"W, a distance of 372.11 feet to a MAG nail set, passing a P.K. nail found at 279.72 feet.


THENCE, N 4°-51'-11"W, a distance of 250.34 feet to a 5/8 inch iron rod set, passing a 5/8 inch iron rod set at 9.59 feet.

THENCE, with the east line of the Jeffrey L. Zell 0.472 acre tract (O.R. 702, Pg. 308), N 20°-41'-32"W, a distance of 61.69 feet to the point of beginning.

Containing 3.361 acres, of which 0.256 acre is within the highway right-of-way.

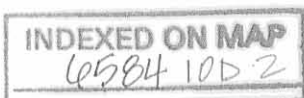
The basis for bearings is the south line of Lot 4519, being N 55°-52'-29" E, and all other bearings are from angles and distances measured in a field survey by Lee Surveying and Mapping Co., Inc. on December 23, 2002 and June 18, 2004.

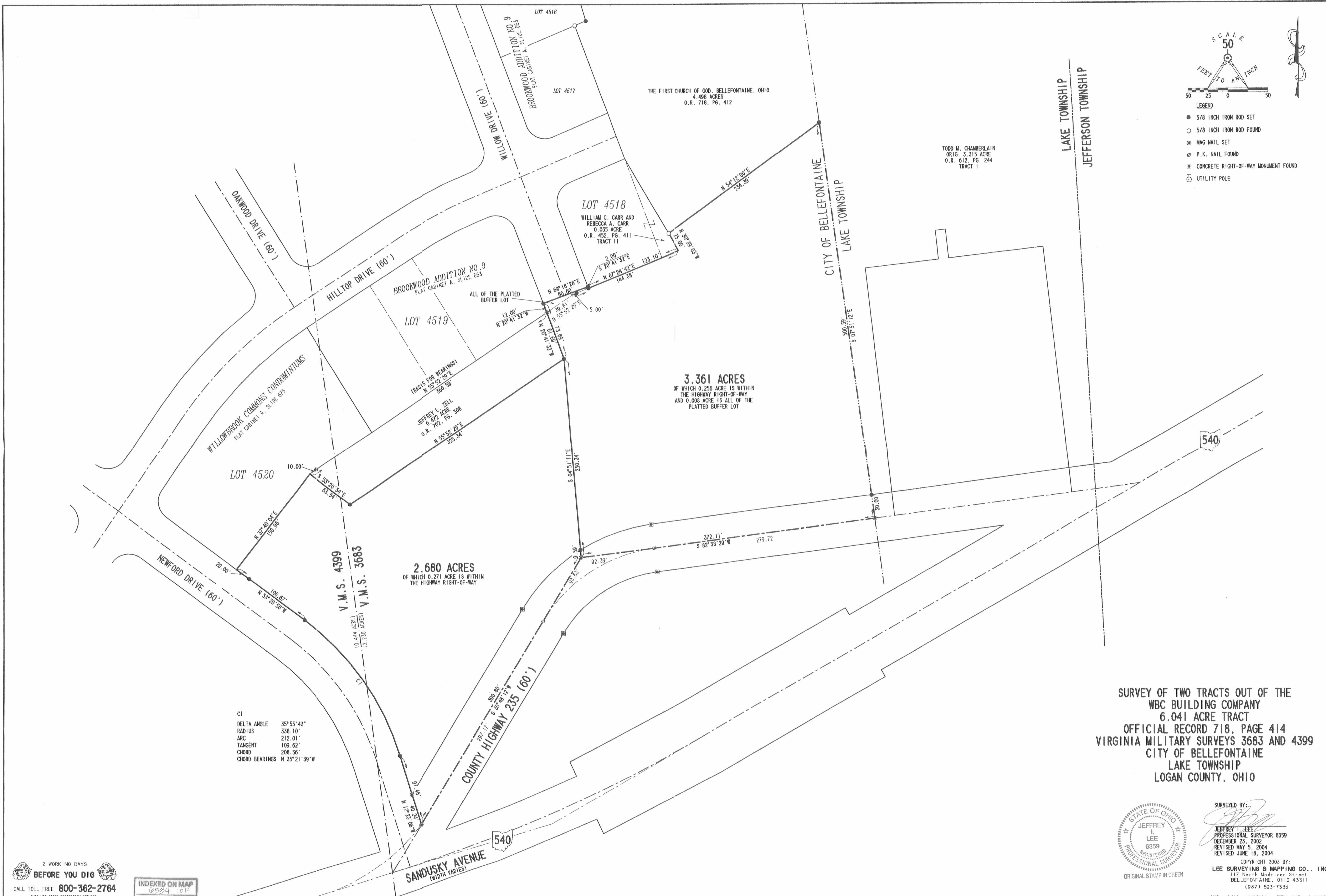
Description prepared by:

  
Jeffrey I. Lee  
Professional Surveyor 6359  
June 18, 2004



L-3498  
ORIGINAL STAMP IN GREEN





SCALE  
50  
FEET TO AN INCH

LEGEND

- 5/8 INCH IRON ROD SET
- 5/8 INCH IRON ROD FOUND
- ⊙ MAG NAIL SET
- ⊕ P.K. NAIL FOUND
- ⊞ CONCRETE RIGHT-OF-WAY MONUMENT FOUND
- ⊙ UTILITY POLE

CI

DELTA ANGLE	35° 55' 43"
RADIUS	338.10'
ARC	212.01'
TANGENT	109.62'
CHORD	208.56'
CHORD BEARINGS	N 35° 21' 39" W

SURVEY OF TWO TRACTS OUT OF THE  
WBC BUILDING COMPANY  
6.041 ACRE TRACT  
OFFICIAL RECORD 718, PAGE 414  
VIRGINIA MILITARY SURVEYS 3683 AND 4399  
CITY OF BELLEFONTAINE  
LAKE TOWNSHIP  
LOGAN COUNTY, OHIO



SURVEYED BY:  
*Jeffrey I. Lee*  
JEFFREY I. LEE  
PROFESSIONAL SURVEYOR 6359  
DECEMBER 23, 2002  
REVISED MAY 5, 2004  
REVISED JUNE 18, 2004

COPYRIGHT 2003 BY:  
LEE SURVEYING & MAPPING CO., INC.  
117 North Medriver Street  
BELLEFONTAINE, OHIO 43311  
(937) 593-7335

2 WORKING DAYS  
**BEFORE YOU DIG**  
CALL TOLL FREE 800-362-2764  
OHIO UTILITIES PROTECTION SERVICE.

INDEXED ON MAP  
6504 10P



Received 4-1-88 OK 4-7-88 C.R

**LESLIE H. GEESLIN**  
REGISTERED SURVEYOR NO. 5248  
P. O. BOX 274  
RUSHSVLVANIA, OHIO 43347

TELEPHONE: (513) 468-2793  
L.P.Z. SURVEY

April, 1988

The following described real estate situated in the State of Ohio, County of Logan, Township of Lake, being part of Virginia Military Surveys 4399 and 3683 in the City of Bellefontaine and more particularly described as follows:

Beginning at a 0.625 inch iron bar in the south line of Hilltop Drive that is S. 31° 37' 14" E. (this bearing is assumed and all other bearings are from angles and distances measured in this field survey ) 30.00 feet from the intersection of the centerlines of said Hilltop Drive and Oakwood Drive.

Thence S. 31° 37' 14" E. 166.79 feet to a point.

Thence S. 55° 53' 21" W. 94.88 feet to a point.

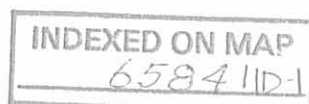
Thence S. 37° 40' 56" W. 150.96 feet to a point in the east line of Newford Drive.

Thence with said east line N. 53° 22' 22" W. 130.64 feet to the P. C. of a 25.00 foot radius curve to the right.

Thence with said curve, the chord of which measures N. 8° 24' 36" W. 35.33 feet to the P. T. of said curve in the south line of said Hilltop Drive.

Thence with said Hilltop Drive N. 36° 33' 09" E. 94.92 feet to a 0.625 inch iron bar.

Thence with said Hilltop Drive on a 490.52 foot radius curve to the right, the chord of which measures N. 47° 27' 58" E. 185.74 feet, to the place of beginning.



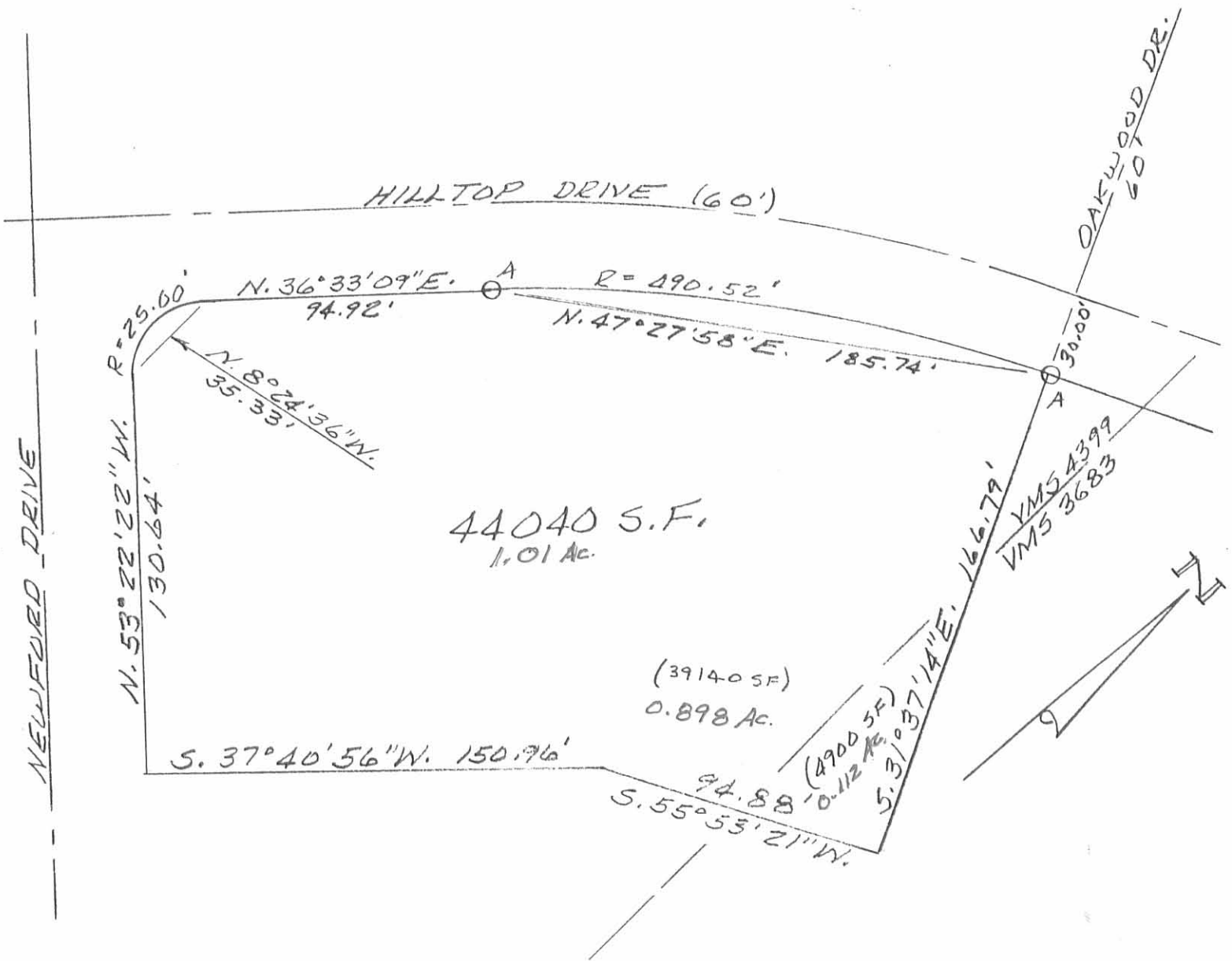
Containing 44040 square feet of which 4900 S. F. are in V. M.S. 3683 and 39140 S. F. are in V. M. S. 4399.

The above described 44040 S. F. tract being part of L. P. Z. Construction Company's 45.83 acre tract as described in D. B. Vol. 332 Page 862, *OF WHICH 0.898 ACRE IS IN V.M.S. 4399 AND 0.112 ACRE IS IN V.M.S. 3683.*



*Leslie H. Geeslin*

INDEXED ON MAP  
6584 1122



SURVEY OF 44040 SQ. FT. TRACT  
IN VIRGINIA MILITARY SURVEYS 4399  
AND 3683, LAKE TOWNSHIP, LOGAN  
COUNTY, OHIO IN THE CITY OF  
BELLEFONTAINE FOR L. P. Z. CONST.  
CO.

APRIL, 1988  
SCALE: 1" = 50'

LEGEND:

A = 5/8" IRON BAR FD.

INDEXED ON MAP  
6584 11P

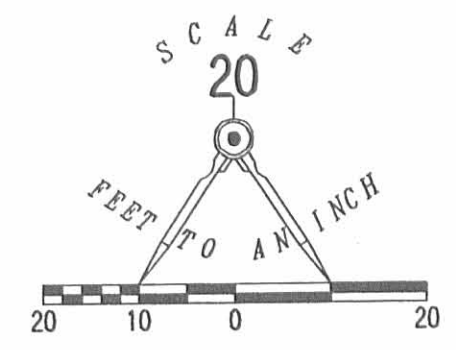


*Leslie H. Geeslin*  
LESLIE H. GEESLIN  
RUSHSVLVANIA, OHIO



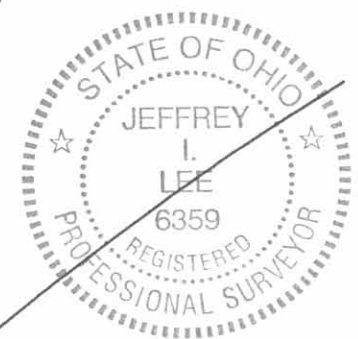
REC'D 7-22-04 SMY OK

CURVE	RADIUS	ARC LENGTH	CHORD LENGTH	CHORD BEARING	DELTA ANGLE
C1	25.00'	36.93'	33.66'	S 10°38'25" W	84°37'45"
C2	550.52'	71.03'	70.98'	N 49°13'13" E	07°23'33"
C3	430.00'	28.27'	28.26'	N 29°47'15" W	03°45'58"



- LEGEND
- 5/8 INCH IRON ROD SET
  - 5/8 INCH IRON ROD FOUND
  - ⊗ MAG NAIL FOUND

A RETRACEMENT SURVEY OF  
 LOT 4438  
 BROOKWOOD ADDITION # 8  
 PLAT CABINET A, SLIDES 619- 621  
 CITY OF BELLEFONTAINE  
 LAKE TOWNSHIP  
 LOGAN COUNTY, OHIO



SURVEYED BY:  
  
 JEFFREY I. LEE  
 PROFESSIONAL SURVEYOR 6359  
 JULY 20, 2004

COPYRIGHT 2004 BY:  
 LEE SURVEYING & MAPPING CO., INC.  
 117 North Medriver Street  
 BELLEFONTAINE, OHIO 43311  
 (937) 593-7335

2 WORKING DAYS  
**BEFORE YOU DIG**  
 CALL TOLL FREE **800-362-2764**  
 OHIO UTILITIES PROTECTION SERVICE.

INDEXED ON MAP  
 6584 128

ADW D413 3848074 L-3848074-3

## PROFESSIONAL SURVEYOR'S AFFIDAVIT

Jeffrey I. Lee, being first duly sworn, deposes and says that he is a Registered Professional Surveyor under the laws of the State of Ohio, being Professional Surveyor No. 6359 and that he is making this affidavit for the purposes of correcting the description to certain real estate situated in Lake Township, Logan County, Ohio, presently owned by WBC Building Company, an Ohio Corporation, by virtue of a General Warranty Deed recorded in Official Record 646, Page 973 of the Logan County Records of Deeds.

The corrected description being as follows with corrections underlined:

### **L.P.Z. CONSTRUCTION CO., INC. 6.041 ACRES**

Lying in Virginia Military Surveys 3683 and 4399, City of Bellefontaine, Lake Township, Logan County, Ohio.

Being out of the L.P.Z. Construction Co., Inc. original 45.83 acre tract as deeded and described in Volume 332, Page 862, including all of a buffer lot between Lot 4518 and Lot 4519 of Brookwood Addition No. 9 as recorded in Plat Cabinet A, Slide 663 of the Logan County Records of Deeds and being more particularly described as follows:

Beginning at a MAG nail set on the west right-of-way extended of Willow Drive (60 feet wide), at the southeast corner of Lot 4519 of Brookwood Addition No. 9 (Plat Cabinet A. Slide 663).

THENCE, with the west right-of-way extended of Willow Drive and the east line of Lot 4519, N 20°-41'-32" W, a distance of 12.00 feet to a 5/8 inch iron rod set.

THENCE, with the south line of Willow Drive, N 69°-18'-28" E, a distance of 60.00 feet to a 5/8 inch iron rod set.

THENCE, with the west line of Lot 4518, S 20°-41'-32" E, a distance of 2.00 feet to a 5/8 inch iron rod set on the southwest corner of Lot 4518.

THENCE, with the south line of Lot 4518 of Brookwood Addition No. 9 and the south line of the William C. Carr 0.035 acre tract (O.R. 452, Pg. 411, Tract II), N 67°-24'-42" E, a distance of 123.10 feet to a point in a creek.

THENCE, with the east line of the said 0.035 acre tract, N 30°-39'-03" W, a distance of 25.00 feet to a 5/8 inch iron rod found.

THENCE, with the south line of The First Church of God, Bellefontaine, Ohio, 4.400 acre tract (O.R. 614, Pg. 330), N 54°-12'-00" E, a distance of 234.39 feet to a 5/8 inch iron rod set.

THENCE, with the City of Bellefontaine Corporation Line and the west line of the Todd M. Chamberlain original 3.315 acre tract (O.R. 612, Pg. 244, Tract I), S 7°-51'-12"E, a distance of 500.59 feet to a MAG nail set in the center-line of County Highway 235, passing a 5/8 inch iron rod set at 470.59 feet.

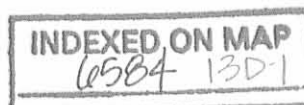
THENCE, with the center-line of County Highway 235, S 82°-38'-29"W, a distance of 372.11 feet to a MAG nail set, passing a P.K. nail found at 279.72 feet.

THENCE, with the center-line of County Highway 235, S 30°-48'-12" W, a distance of 390.80 feet to a MAG nail set, passing a P.K. nail found at 93.63 feet.

THENCE, with the easterly right-of-way extended and the east right-of-way of Newford Drive (60 feet wide), N 17°-23'-06" W, a distance of 91.46 feet to a 5/8 inch iron rod set, passing a MAG nail set at 40.24 feet.

THENCE, with the easterly right-of-way of Newford Drive, a curve to the left having a central angle of 35°-55'-43", a radius of 338.10 feet, an arc length of 212.01 feet and a chord bearing N 35°-21'-39" W, a distance of 208.56 feet to a 5/8 inch iron rod set.

THENCE, with the east right-of-way of Newford Drive, N 53°-20'-56" W, a distance of 106.67 feet to a point, passing a 5/8 inch iron rod set at 86.67 feet.



THENCE, with the southeasterly line of Lot 4520 of Brookwood Addition No. 9 (also Willowbrook Commons Condominiums, Plat Cabinet A, Slide 675) N 37°-40'-04" E, a distance of 150.96 feet to a point, referenced by a 5/8 inch iron rod set N 55°-52'-29" E, a distance of 10.00 feet.

THENCE, S 53°-20'-54" E, a distance of 63.54 feet to a 5/8 inch iron rod set.

THENCE, N 55°-52'-29" E, a distance of 325.34 feet to a 5/8 inch iron rod set.

THENCE, N 20°-41'-32" W, a distance of 61.69 feet to the point of beginning.

Containing 6.041 acres, of which 0.527 acre is within the highway right-of-way, 0.444 acre is within Virginia Military Survey 4399 and 5.597 acres are within Virginia Military Survey 3683.

The basis for bearings is the south line of Lot 4519, being N 55°-52'-29" E, and all other bearings are from angles and distances measured in a field survey by Lee Surveying and Mapping Co., Inc. on December 23, 2002 and May 5, 2004.

This affidavit is made in compliance with Revised Code of Ohio Sec. 5301.252 and particularly to show an affidavit of a professional surveyor to reconcile conflicts and ambiguities in descriptions of land in recorded instruments as stated in paragraph B(5) of Section 5301.252. Under Sec. 5301.252(C) the County Recorder shall receive and cause such affidavit to be recorded as deeds are recorded.

SIGNED AND ACKNOWLEDGED IN THE PRESENCE OF:

Steven R. Pummel  
STEVEN R. PUMMEL

William K. Bruce  
William K. Bruce  
STATE OF OHIO,  
LOGAN COUNTY, SS:



Jeffrey I. Lee  
Jeffrey I. Lee  
Professional Surveyor No. 6359

ORIGINAL STAMP IN GREEN

BE IT REMEMBERED, that on this 13<sup>th</sup> day of May, 2004, before me, the subscriber, a Notary Public in and for said County and State, personally came the above named Jeffrey I. Lee the maker of the foregoing Affidavit, and acknowledged the signing of the same to be his voluntary act and deed, for the uses and purposes therein mentioned.

IN TESTIMONY WHEREOF, I have hereunto subscribed my name and affixed my official seal, on the day and year last aforesaid.

Cindy Cushman  
Notary Public,

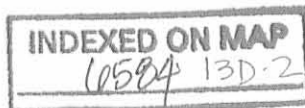


CINDY CUSHMAN  
Notary Public, State of Ohio  
My Comm. Expires Nov. 13, 2005

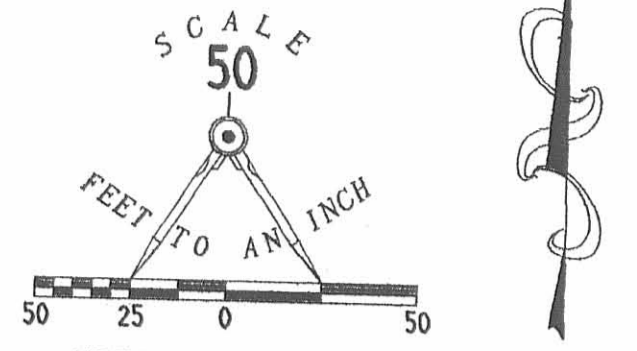
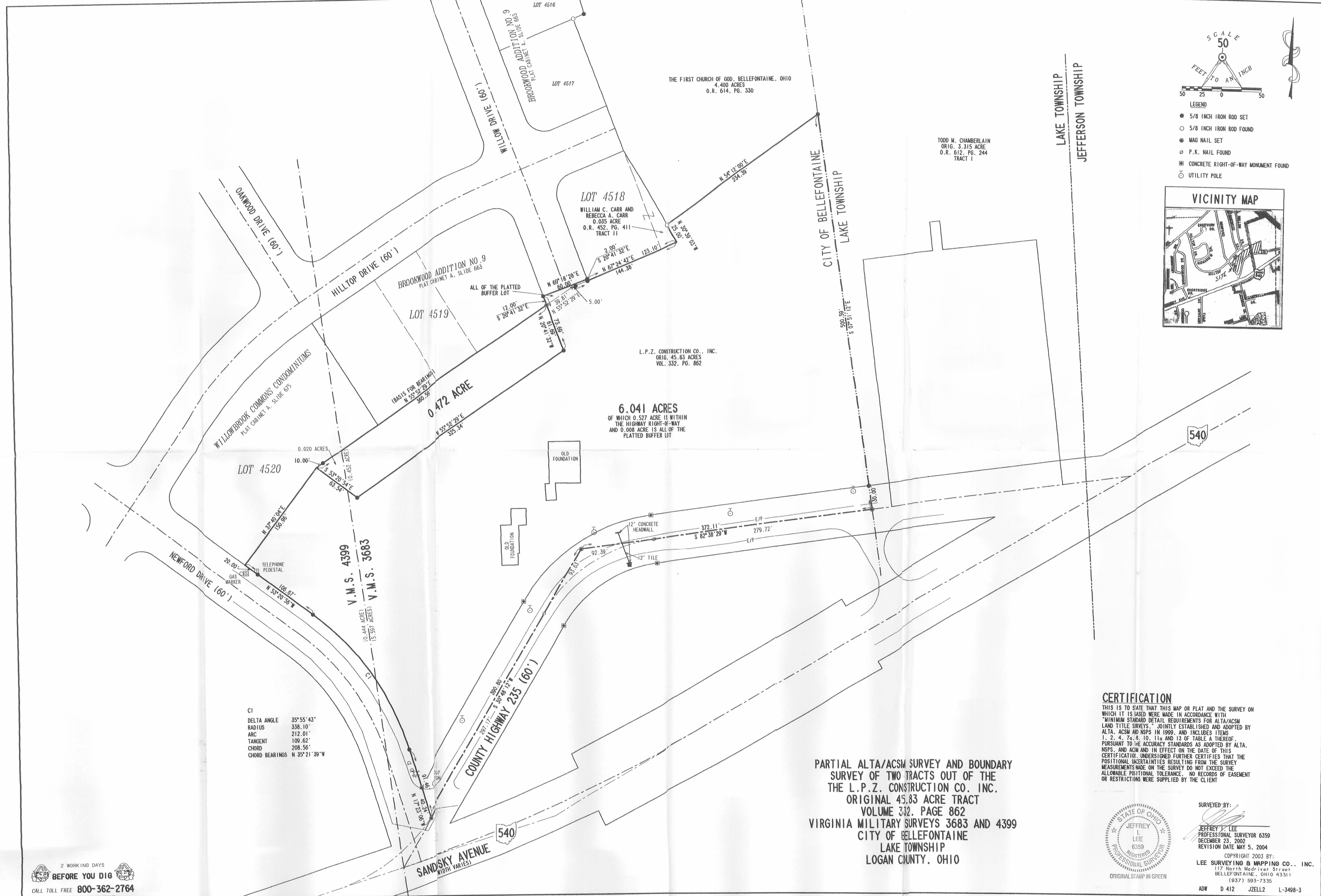
RECORDER:

Please cross reference to Official Record 646, Page 973 in the Abstract of the ~~Deed~~ Records of Logan County, Ohio.

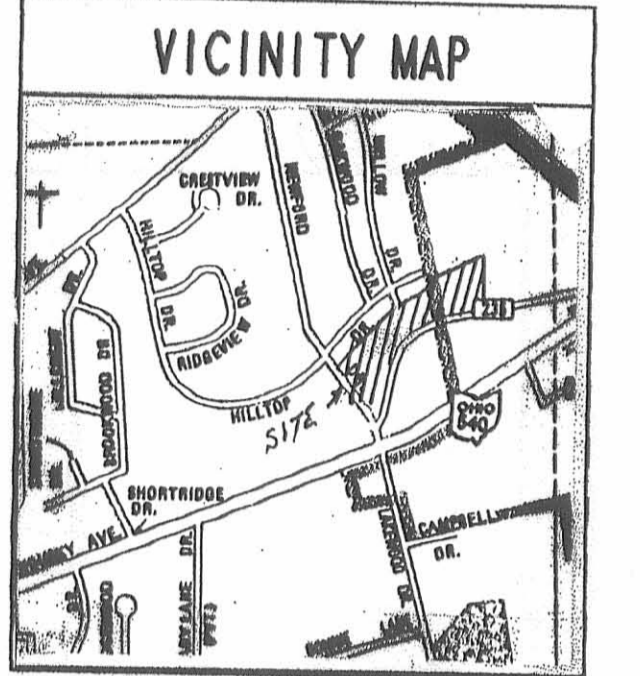
This instrument was prepared by Jeffrey I. Lee.







- LEGEND**
- 5/8 INCH IRON ROD SET
  - 5/8 INCH IRON ROD FOUND
  - MAG NAIL SET
  - P.K. NAIL FOUND
  - CONCRETE RIGHT-OF-WAY MONUMENT FOUND
  - UTILITY POLE



**CERTIFICATION**  
THIS IS TO STATE THAT THIS MAP OR PLAT AND THE SURVEY ON WHICH IT IS BASED WERE MADE IN ACCORDANCE WITH "MINIMUM STANDARD DETAIL REQUIREMENTS FOR ALTA/ACSM LAND TITLE SURVEYS," JOINTLY ESTABLISHED AND ADOPTED BY ALTA, ACSM AND NSPS IN 1999, AND INCLUDES ITEMS 1, 2, 4, 7a, 8, 10, 11a AND 13 OF TABLE A THEREOF, PURSUANT TO THE ACCURACY STANDARDS AS ADOPTED BY ALTA, NSPS, AND ACSM AND IN EFFECT ON THE DATE OF THIS CERTIFICATION. UNDERSIGNED FURTHER CERTIFIES THAT THE POSITIONAL UNCERTAINTIES RESULTING FROM THE SURVEY MEASUREMENTS MADE ON THE SURVEY DO NOT EXCEED THE ALLOWABLE PROPORTIONAL TOLERANCE. NO RECORDS OF EASEMENT OR RESTRICTIONS WERE SUPPLIED BY THE CLIENT

**PARTIAL ALTA/ACSM SURVEY AND BOUNDARY SURVEY OF TWO TRACTS OUT OF THE THE L.P.Z. CONSTRUCTION CO., INC. ORIGINAL 45.83 ACRE TRACT VOLUME 332, PAGE 862 VIRGINIA MILITARY SURVEYS 3683 AND 4399 CITY OF BELLEFONTAINE LAKE TOWNSHIP LOGAN COUNTY, OHIO**

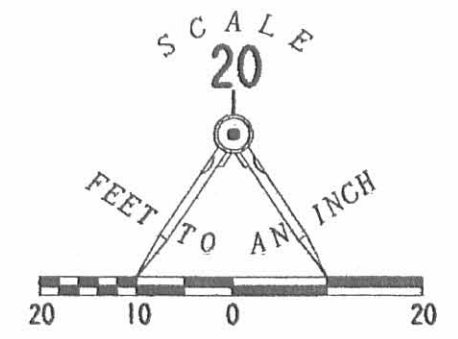
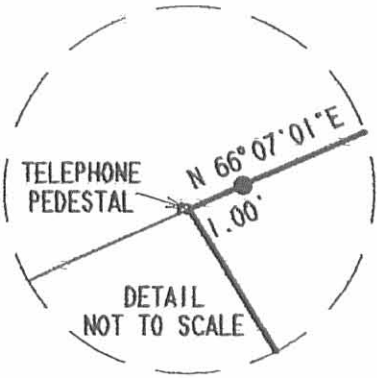


SURVEYED BY:  
**JEFFREY J. LEE**  
PROFESSIONAL SURVEYOR 6359  
DECEMBER 23, 2002  
REVISION DATE MAY 5, 2004  
COPYRIGHT 2003 BY:  
**LEE SURVEYING & MAPPING CO., INC.**  
117 North Madriver Street  
BELLEFONTAINE, OHIO 43311  
(937) 593-7335  
ADW D 412 JZELL2 L-3498-3



REC'D 7-22-04 SUM OK

CURVE	DELTA ANGLE	RADIUS	ARC	TANGENT	CHORD	CHORD BEARING
C 1	3° 52' 37"	560.00'	37.89'	18.95'	37.88'	S 60° 19' 07" W



- LEGEND
- 5/8 INCH IRON ROD FOUND
  - 5/8 INCH IRON ROD SET

BROOKWOOD ADDITION NO. 8  
PLAT CABINET A  
SLIDES 619 & 621



A SURVEY OF THE REMAINDER OF  
LOT 4505  
BROOKWOOD ADDITION NO. 9  
PLAT CABINET A, SLIDE 663  
CITY OF BELLEFONTAINE  
LAKE TOWNSHIP  
LOGAN COUNTY, OHIO



SURVEYED BY:  
*[Signature]*  
JEFFREY I. LEE  
PROFESSIONAL SURVEYOR 6359  
JULY 19, 2004

COPYRIGHT 2004 BY:  
LEE SURVEYING & MAPPING CO., INC.  
117 North Madriver Street  
BELLEFONTAINE, OHIO 43311  
(937) 593-7335

ORIGINAL STAMP IN GREEN

KSR D413 3762074A L-3762-3

2 WORKING DAYS  
BEFORE YOU DIG  
CALL TOLL FREE 800-362-2764  
OHIO UTILITIES PROTECTION SERVICE

INDEXED ON MAP  
6584 14P

10/21/05 OK GMA

**LESLIE H. GEESLIN**

REGISTERED SURVEYOR 5248

P. O. BOX 274

RUSHSVLVANIA, OHIO 43347

TELEPHONE: (513) 468-7265

**MACDONALD SURVEY**

September 14, 2005

The following described real estate situated in the State of Ohio, County of Logan, Lake Township, being part of Virginia Military Survey 3683 in the City of Bellefontaine and being the same area as dedicated as part of Broadview Drive in Brookwood Addition No. 9 as recorded in Plat Cabinet A, Slide 663 'in the Logan County Recorders Office and more particularly described as follows:

Beginning at a 5/8 inch iron bar found at the northeast corner of Broadview Drive in Brookwood Addition No. 8.

Thence N. 83° 13' 34" E. 310.12 feet to a 5/8 inch iron bar set.

Thence S. 08° 20' 59" E. 30.01 feet to a point

Thence S. 83° 13' 34" W. 310.12 feet to a 5/8 inch iron bar found at the east end of Broadview Drive.

Thence with the east side of said Broadview Drive N. 8° 20' 59" W. 30.01 feet to the place of beginning.

Containing 0.214 acre more or less.

The above described 0.214 acre tract being on the south side of the First Church of God's 2.162 acre tract as described in D. B. Vol. 406 Page 221.

Bearings are based on an assumed bearing ( S. 83° 13' 34 W. ) for the south line of said Church of God's 2.162 acre tract in this field survey by Leslie H. Geeslin, Reg. Surveyor No. 5248 on *MARCH 15, 1988.*



*Leslie H. Geeslin*

INDEXED ON MAP  
6584 15D

RECD 9-30-10 smj/ok

# Lee Surveying and Mapping Co., Inc.

Land Surveys • Topography • Subdivisions • Construction Layout

117 N. Madriver St.  
Bellefontaine OH 43311



Phone: (937) 593-7335  
Fax: (937) 593-7444  
surveys@lsminc.us

## ZELL 0.010 ACRE

Lying in the City of Bellefontaine, Lake Township, Logan County, Ohio.

Being out of Lot 4519 of Brookwood Addition No. 9 as recorded in Plat Cabinet A, Slide 663 of the Logan County Records of Plats and being more particularly described as follows:

Commencing on a 5/8 inch iron rod found on the south right-of-way of Hilltop Drive (60 feet wide) at the northwest corner of Lot 4519.

THENCE, with the south right-of-way of Hilltop Drive and the north line of Lot 4519, N 58°-22'-46"E, a distance of 159.10 feet to a 5/8 inch iron rod found.

THENCE, with the east line of the Jeffrey L. Zell 0.236 acre tract, part of Lot 4519 (O.R. 417, Pg. 530), S 31°-37'-29"E, a distance of 159.90 feet to a 5/8 inch iron rod found on the south line of Lot 4519.

THENCE, with the south line of Lot 4519 and the north line of the Jeffrey L. Zell 0.472 acre tract (O.R. 702, Pg. 308), N 55°-53'-21"E, a distance of 76.52 feet to a 5/8 inch iron rod set at the TRUE POINT OF BEGINNING, passing a 5/8 inch iron rod found at 15.00 feet.

THENCE, N 17°-36'-20"E, a distance of 47.10 feet to a 5/8 inch iron rod set on the east line of Lot 4519 and the west right-of-way of Willow Drive.

THENCE, with the east line of Lot 4519 and the west right-of-way of Willow Drive (60 feet wide) and a westerly line of the WCB Building Company 5.831 acre tract (O.R. 646, Pg. 973), S 20°-40'-40"E, a distance of 30.00 feet to a 5/8 inch iron rod found at the southeast corner of Lot 4519.

THENCE, with the south line of Lot 4519 and the north line of the aforesaid 0.472 acre tract, S 55°-53'-21"W, a distance of 30.00 feet to the point of beginning.

Containing 0.010 acre.

Property is subject to any and all previous easements and rights-of-way of record.

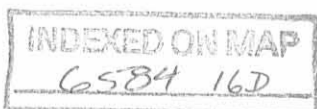
The basis for bearings is the center-line of Hilltop Drive, being N 58°-22'-46"E, and all other bearings are from angles and distances measured in a field survey by Lee Surveying and Mapping Co., Inc. on September 24, 2010.



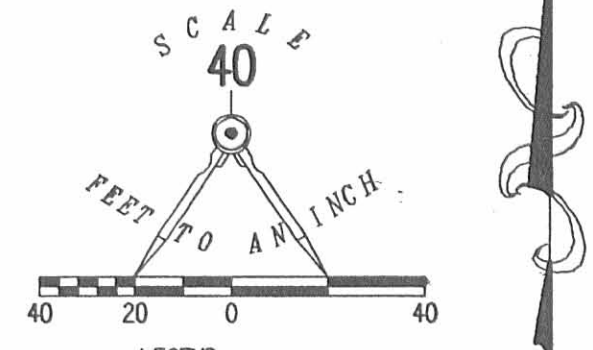
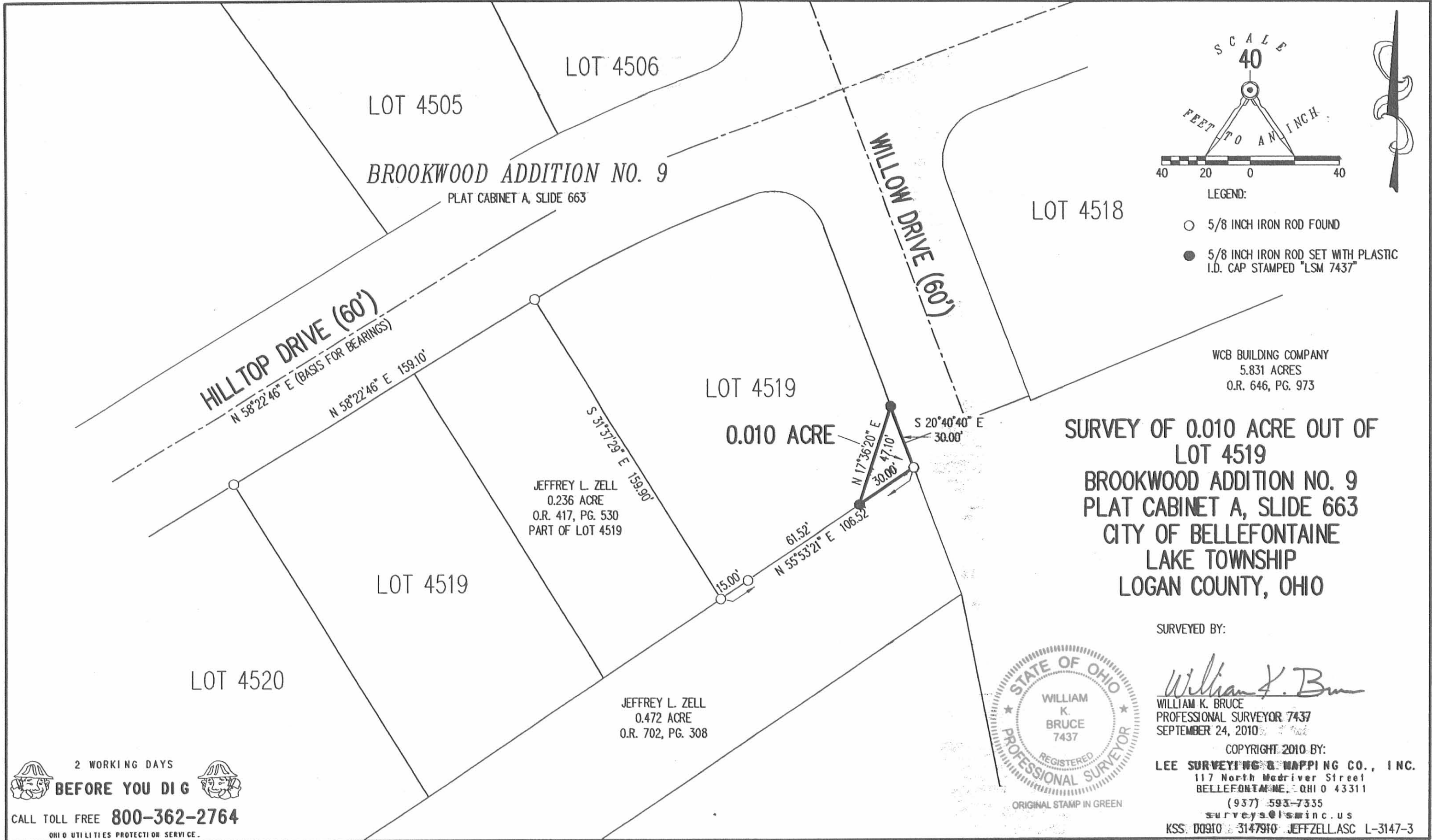
Description prepared by:

William K. Bruce  
Professional Surveyor 7437  
September 24, 2010

3147910



ZELID 9-30-10 SWM BK

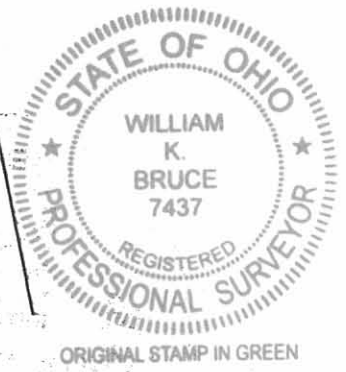


WCB BUILDING COMPANY  
5.831 ACRES  
O.R. 646, PG. 973

**SURVEY OF 0.010 ACRE OUT OF  
LOT 4519  
BROOKWOOD ADDITION NO. 9  
PLAT CABINET A, SLIDE 663  
CITY OF BELLEFONTAINE  
LAKE TOWNSHIP  
LOGAN COUNTY, OHIO**

SURVEYED BY:

*William K. Bruce*  
WILLIAM K. BRUCE  
PROFESSIONAL SURVEYOR 7437  
SEPTEMBER 24, 2010



COPYRIGHT 2010 BY:  
**LEE SURVEYING & MAPPING CO., INC.**  
117 North Madriver Street  
BELLEFONTAINE, OHIO 43311  
(937) 593-7335  
surveys@lsminc.us  
KSS: 00910 3147910 JEFFZELL.ASC L-3147-3

2 WORKING DAYS  
**BEFORE YOU DIG**  
CALL TOLL FREE **800-362-2764**  
OHIO UTILITIES PROTECTION SERVICE.

INDEXED ON MAP  
6584 16P



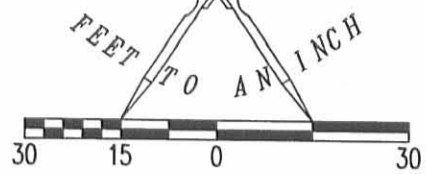
REC'D 10-13-11 SMY CLK

BROOKWOOD ADDITION No. 7  
PLAT CABINET A, SLIDE 589

BROOKWOOD ADDITION No. 8  
PLAT CABINET A, SLIDES 619-621

OAKWOOD DRIVE (60 FEET WIDE)

SCALE  
30



LEGEND

- 5/8 INCH IRON ROD SET WITH PLASTIC I.D. CAP STAMPED "LSM 7437"
- 5/8 INCH IRON ROD FOUND
- ⊕ CONCRETE MONUMENT FOUND

LOT 4390  
LOT 4389

LOT 4442  
LOT 4441

LOT 4441  
LOT 4440

LOT 4389  
LOT 4388

LOT 4440  
LOT 4439

LOT 4388  
LOT 4387

N 08°20'54" W  
106.08'  
BASIS FOR BEARINGS

N 08°20'54" W  
43.40'

124.70'  
N 74°1'30" E

PARTIAL RETRACEMENT OF  
LOT 4440  
BROOKWOOD ADDITION No. 8  
PLAT CABINET A, SLIDES 619-621  
CITY OF BELLEFONTAINE  
LAKE TOWNSHIP  
LOGAN COUNTY, OHIO

SURVEYED BY:

*William K. Bruce*  
WILLIAM K. BRUCE  
PROFESSIONAL SURVEYOR 7437  
OCTOBER 11, 2011

COPYRIGHT 2011 BY:  
LEE SURVEYING & MAPPING CO., INC.  
117 North Madriver Street  
BELLEFONTAINE, OHIO 43311  
(937) 593-7335  
WWW.LSMINC.US  
surveys@lsminc.us



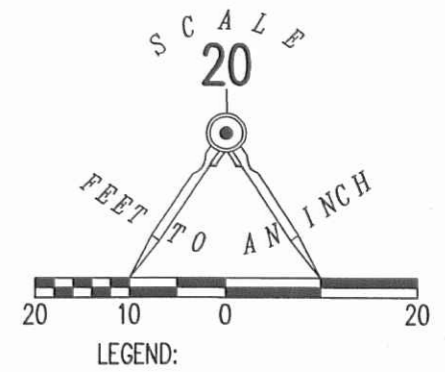
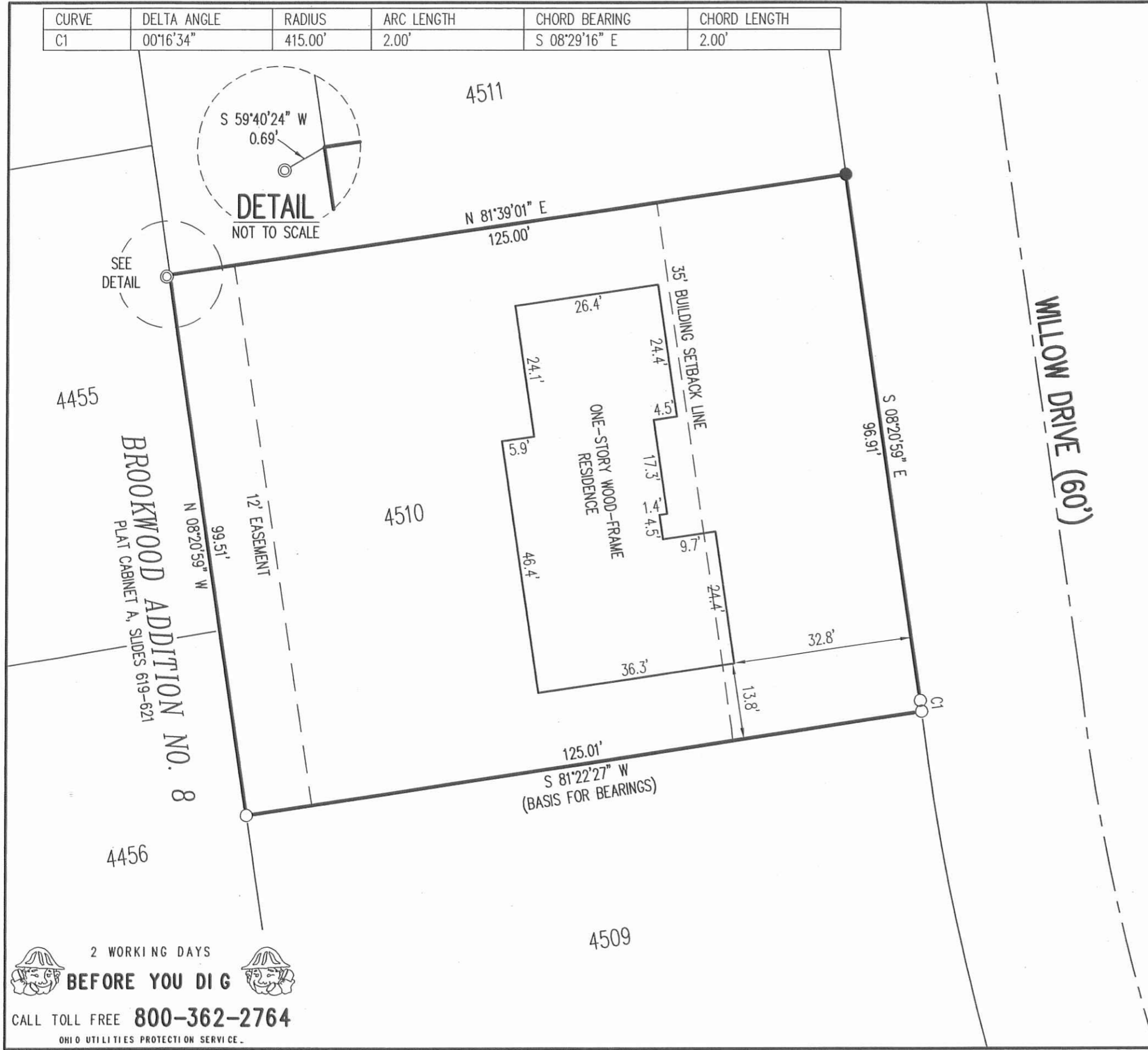
ORIGINAL STAMP IN GREEN

INDEXED ON MAP  
6584 17P

2 WORKING DAYS  
**BEFORE YOU DIG**  
CALL TOLL FREE **800-362-2764**  
OHIO UTILITIES PROTECTION SERVICE

**APPROVED** 9-24-13

CURVE	DELTA ANGLE	RADIUS	ARC LENGTH	CHORD BEARING	CHORD LENGTH
C1	00°16'34"	415.00'	2.00'	S 08°29'16" E	2.00'



RETRACEMENT AND LOCATION SURVEY FOR  
 JOHN P. HORN AND  
 ROSALEE F. HORN  
 LOT 4510  
 BROOKWOOD ADDITION NO. 9  
 PLAT CABINET A, SLIDE 663  
 OFFICIAL RECORD 1073, PAGE 678  
 CITY OF BELLEFONTAINE  
 LAKE TOWNSHIP  
 LOGAN COUNTY, OHIO

SURVEYED BY:

*William K. Bruce*

WILLIAM K. BRUCE  
 PROFESSIONAL SURVEYOR 7437  
 AUGUST 13, 2013



ORIGINAL STAMP IN GREEN

COPYRIGHT 2013 BY:  
**LEE SURVEYING & MAPPING CO., INC.**  
 117 North Madriver Street  
 BELLEFONTAINE, OHIO 43311  
 (937) 593-7335  
 WWW.LSMINC.US  
 surveys@lsminc.us

KSS D0613 55720613 L-5572-3

2 WORKING DAYS  
**BEFORE YOU DIG**  
 CALL TOLL FREE **800-362-2764**  
 OHIO UTILITIES PROTECTION SERVICE

INDEXED ON MAP  
 @S84 18P

2-24-14

# Lee Surveying and Mapping Co., Inc.

 **APPROVED** Land Surveys • Topography • Subdivisions • Construction Layout

117 N. Madriver St.  
Bellefontaine OH 43311



Phone: (937) 593-7335  
Fax: (937) 593-7444  
surveys@lsminc.us

## ZELL, TRUSTEE 0.004 ACRES

Lying in Virginia Military Survey 3683, Lake Township, City of Bellefontaine, Logan County, Ohio.

Being part of Lot 4519 of Brookwood Addition No. 9 (Plat Cabinet A, Slide 663) and out of Caroline R. Zell, Trustee 0.361 acre tract as deeded and described in Official Record 758, Page 900, Tract V of the Logan County Records of Deeds and being more particularly described as follows:

Commencing at a 5/8 inch iron rod found at the southeast corner of the Willowbrook Commons Condominiums, Plat Cabinet A, Slide 675.

THENCE, with the north line of the Jeffrey L. Zell 0.472 acre tract (O.R. 702, Pg. 308), N 55°-54'-11"E, a distance of 58.00 feet to a 5/8 inch iron rod set at the TRUE POINT OF BEGINNING.

THENCE, N 34°-05'-49"W, a distance of 5.00 feet to a 5/8 inch iron rod set.

THENCE, N 55°-54'-11"E, a distance of 37.74 feet to a 5/8 inch iron rod set.

THENCE, with the west line of the Jeffrey L. Zell and Lisa G. Zell 0.236 acre tract (O.R. 417, Pg. 530), S 31°-37'-14"E, a distance of 5.00 feet to a point.

THENCE, with the north line of said 0.472 acre tract, S 55°-54'-11"W, a distance of 37.52 feet to the point of beginning.

Containing 0.004 acre.

Property is subject to any and all previous easements and rights-of-way of record.

The basis for bearings is the east line of the Willowbrook Commons Condominiums, being S 31°-37'-14"E, and all other bearings are from angles and distances measured in a field survey by Lee Surveying and Mapping Co., Inc. on February 19, 2014.

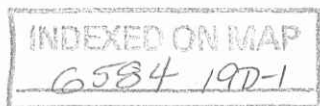
Description prepared by:

William K. Bruce  
Professional Surveyor 7437  
February 19, 2014



ORIGINAL STAMP IN GREEN

L-31470813



2-24-14

# Lee Surveying and Mapping Co., Inc.



Land Surveys • Topography • Subdivisions • Construction Layout

117 N. Madriver St.  
Bellefontaine OH 43311



Phone: (937) 593-7335  
Fax: (937) 593-7444  
surveys@lsminc.us

## ZELL 0.198 ACRES

Lying in Virginia Military Surveys 4399 and 3683, Lake Township, City of Bellefontaine, Logan County, Ohio.

Being out of the Jeffrey L. Zell and Lisa G. Zell 0.472 acre tract as deeded and described in Official Record 702, Page 308 of the Logan County Records of Deeds and being more particularly described as follows:

Beginning at a 5/8 inch iron rod found at the southeast corner of the Willowbrook Commons Condominiums, Plat Cabinet A, Slide 675.

THENCE, with the south line of Lot 4519 of Brookwood Addition No. 9 (Plat Cabinet A, Slide 663) and the south line of the Caroline P. Zell, Trustee 0.361 acre tract (O.R. 758, Pg. 900, Tract V), N 55°-54'-11"E, a distance of 58.00 feet to a 5/8 inch iron rod set.

THENCE, S 34°-06'-04"E, a distance of 60.52 feet to a 5/8 inch iron rod set.

THENCE, with the lines of the Carol Hemphill and Richard A. Hemphill 2.680 acre tract (O.R. 750, Pg. 349) the following two courses:

S 55°-53'-56"W, a distance of 131.72 feet to a 5/8 inch iron rod found.

N 53°-22'-15"W, a distance of 64.12 feet to a point.

THENCE, with the south line of the Willowbrook Commons Condominiums, N 55°-54'-11"E, a distance of 94.88 feet to the point of beginning, passing a 5/8 inch iron rod set at 10.00 feet.

Containing 0.198 acre.

Property is subject to any and all previous easements and rights-of-way of record.

The basis for bearings is the east line of the Willowbrook Commons Condominiums, being S 31°-37'-14"E, and all other bearings are from angles and distances measured in a field survey by Lee Surveying and Mapping Co., Inc. on February 19, 2014.

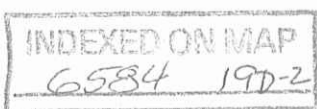
Description prepared by:

William K. Bruce  
Professional Surveyor 7437  
February 19, 2014

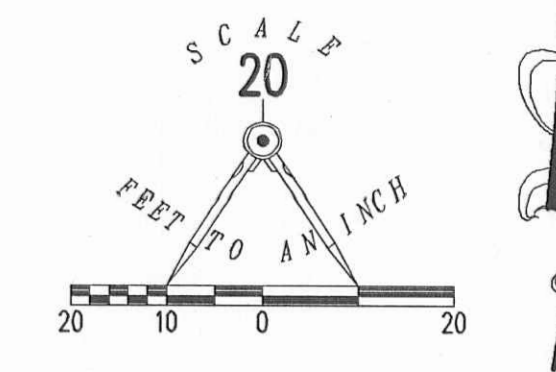


ORIGINAL STAMP IN GREEN

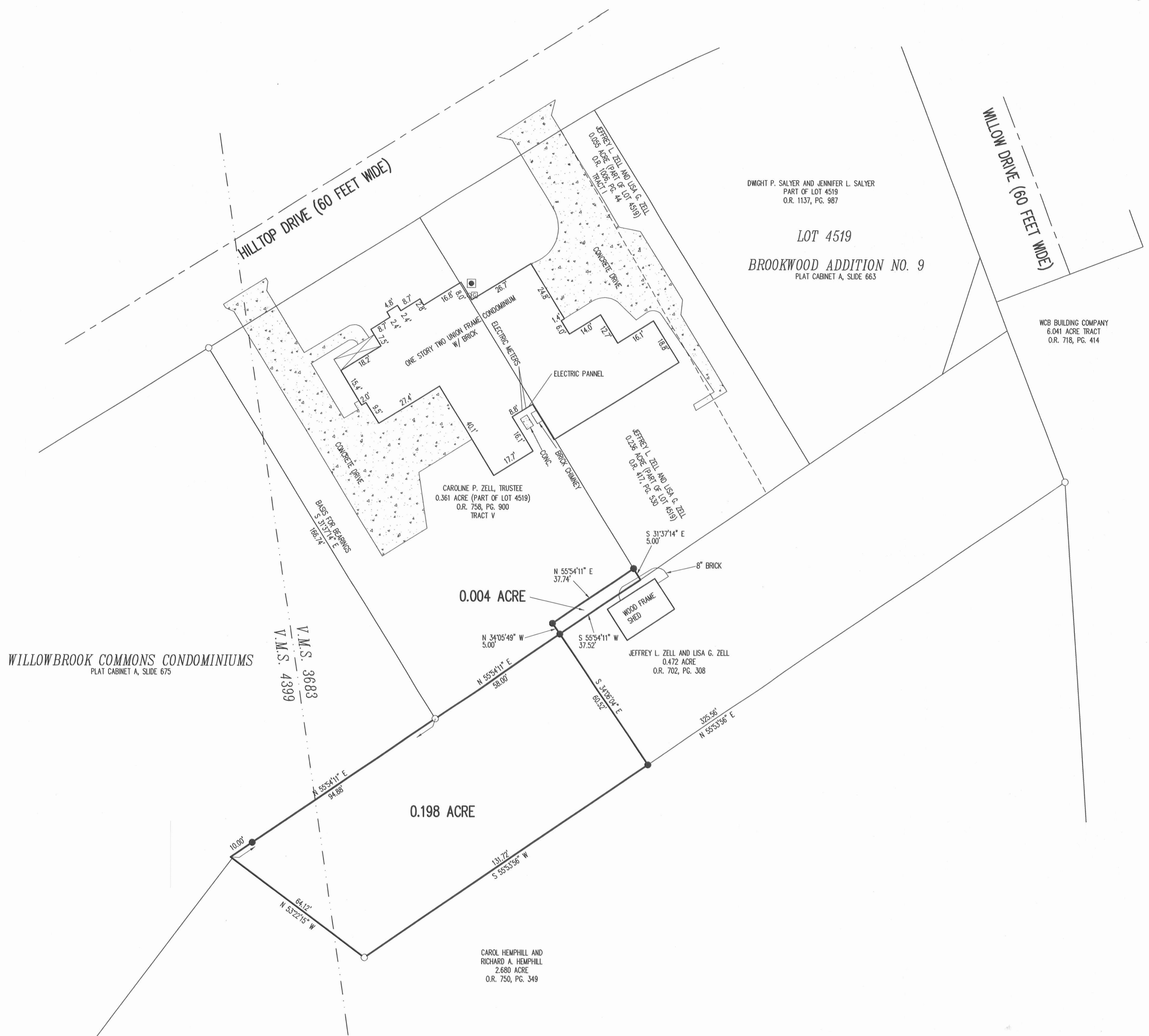
L-31470813







- LEGEND
- 5/8 INCH IRON ROD SET WITH PLASTIC I.D. CAP STAMPED "LSM7437"
  - 5/8 INCH IRON ROD FOUND
  - ⊗ GAS METER
  - A.C. UNIT



DWIGHT P. SALYER AND JENNIFER L. SALYER  
PART OF LOT 4519  
O.R. 1137, PG. 987

LOT 4519  
BROOKWOOD ADDITION NO. 9  
PLAT CABINET A, SLIDE 663

WCB BUILDING COMPANY  
6.041 ACRE TRACT  
O.R. 718, PG. 414

WILLOWBROOK COMMONS CONDOMINIUMS  
PLAT CABINET A, SLIDE 675

V.M.S. 3683  
V.M.S. 4399

CAROLINE P. ZELL, TRUSTEE  
0.361 ACRE (PART OF LOT 4519)  
O.R. 758, PG. 900  
TRACT V

0.004 ACRE

JEFFREY L. ZELL AND LISA G. ZELL  
0.472 ACRE  
O.R. 702, PG. 308

0.198 ACRE

CAROL HEMPHILL AND  
RICHARD A. HEMPHILL  
2.680 ACRE  
O.R. 750, PG. 349

SURVEY OF A 0.004 ACRE TRACT OUT OF THE  
CAROLINE P. ZELL, TRUSTEE  
0.361 ACRE TRACT (PART OF LOT 4519)  
OFFICIAL RECORD 758, PAGE 900, TRACT V  
BROOKWOOD ADDITION NO. 9  
PLAT CABINET A, SLIDE 663  
AND A SURVEY OF A 0.198 ACRE TRACT OUT OF THE  
JEFFREY L. ZELL AND LISA G. ZELL  
0.472 ACRE TRACT  
OFFICIAL RECORD 702, PAGE 308  
VIRGINIA MILITARY SURVEYS 4399 AND 3683  
CITY OF BELLEFONTAINE  
LAKE TOWNSHIP  
LOGAN COUNTY, OHIO

SURVEYED BY:  
*William K. Bruce*  
WILLIAM K. BRUCE  
PROFESSIONAL SURVEYOR 7437  
FEBRUARY 19, 2014

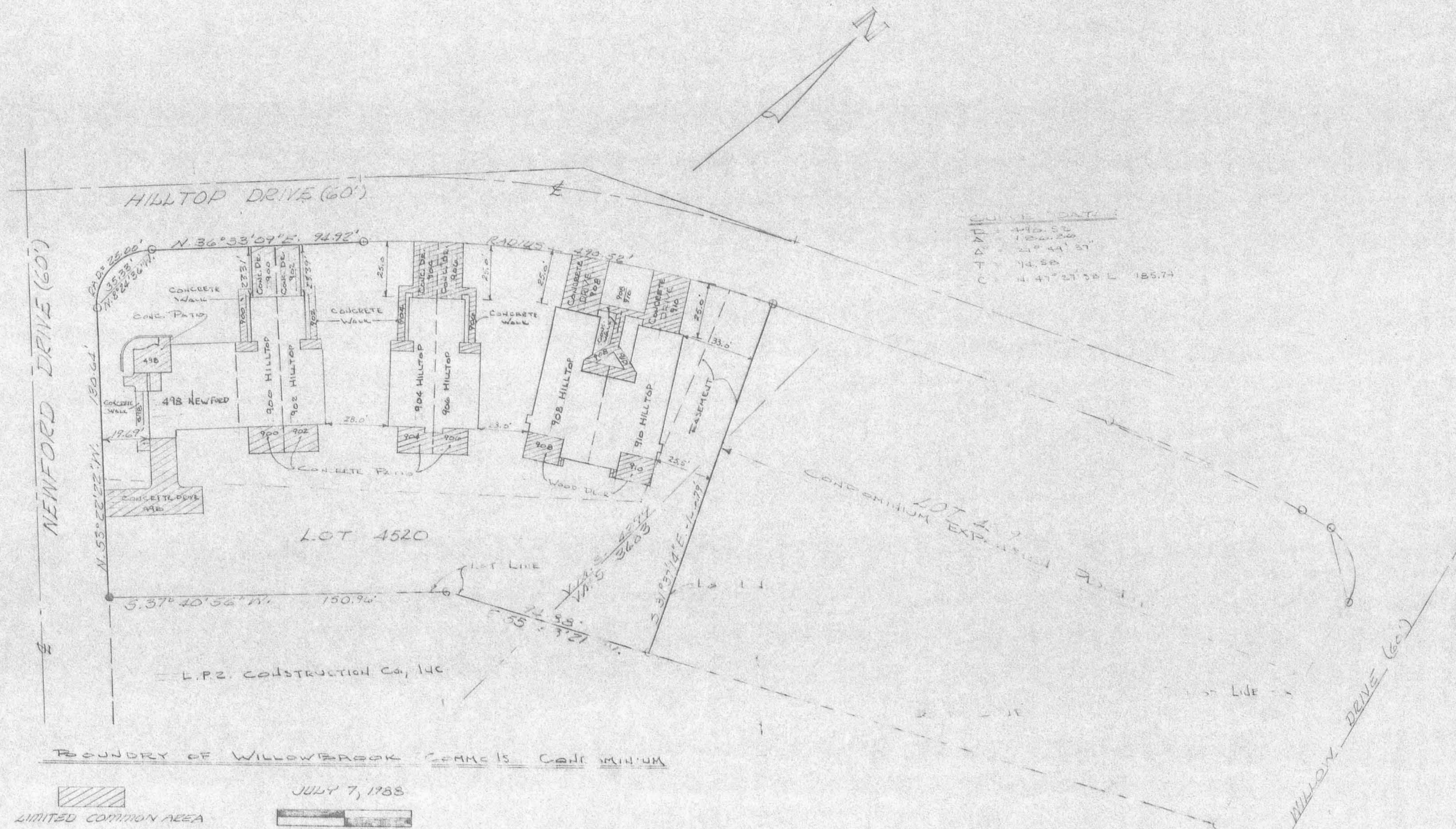


COPYRIGHT 2014 BY:  
LEE SURVEYING & MAPPING CO., INC.  
117 North Madriver Street  
BELLEFONTAINE, OHIO 43311  
(937) 593-7335  
www.lsminc.us  
surveys@lsminc.us  
ADW D0814 31470813-R L-3147-1

2 WORKING DAYS  
BEFORE YOU DIG  
CALL TOLL FREE 800-362-2764  
OHIO UTILITY PROTECTION SERVICE

INDEXED ON MAP  
6584 19P





BOUNDARY OF WILLOWBROOK COMMONS CONDOMINIUM

LIMITED COMMON AREA

JULY 7, 1988

300' 30.0'

LEGEND:  
 ● = CONCRETE MONUMENT  
 ○ = 1/2" IRON BAR

**LEGAL DESCRIPTION**

SITUATED IN THE STATE OF OHIO,  
 COUNTY OF LOGAN, TOWNSHIP OF LAKE,  
 VIRGINIA MILITARY SURVEYS 4219 & 3485, BEING  
 LOT 4520 IN BEAUCHAMPS ADDITION  
 NUMBER 9 IN THE CITY OF BLUEBENTALE.

UNIT	PARCEL NO.
498	17-092-07-03-012.501
900	17-092-07-03-012.502
902	17-092-07-03-012.503
904	17-092-07-03-012.504
906	17-092-07-03-012.505
908	17-092-07-03-012.506
910	17-092-07-03-012.507

RECORDED IN PLAT CABINET \_\_\_\_\_  
 SLIDE \_\_\_\_\_, RECEIVED FOR RECORD  
 AT \_\_\_\_\_ O'CLOCK \_\_\_\_\_ M. THIS  
 DAY OF \_\_\_\_\_ 19\_\_\_\_.

RECORDER, LOGAN COUNTY, OHIO

I HEREBY CERTIFY THAT THIS PLAT  
 ACCURATELY SHOWS THE BUILDINGS  
 AS CONSTRUCTED OR PLATTED FOR  
 WILLOWBROOK COMMONS CONDOMINIUM

Leslie H. Gieslin



I HEREBY CERTIFY THAT THIS PLAT  
 ACCURATELY SHOWS THE BUILDINGS  
 AS CONSTRUCTED.

Richard B. Little

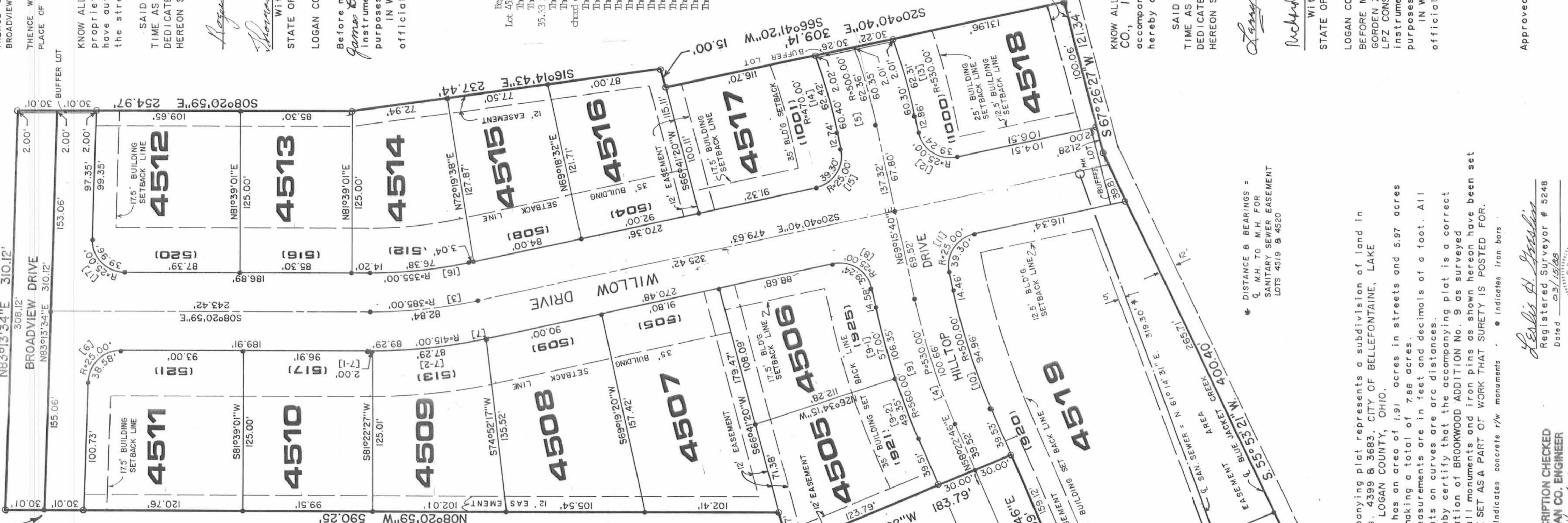


DESIGNED BY: CHECKED gch 4-3-89

**EXHIBIT A**



PLAT OF BROOKWOOD ADDITION NO. 9 BELLEFONTAINE, OHIO



DEDICATION DESCRIPTION - FIRST CHURCH OF GOD, INC. THE FOLLOWING DESCRIBED 30 FOOT DEDICATION SITUATED IN THE STATE OF OHIO, COUNTY OF LOGAN, TOWNSHIP OF LAKE, BEING PART OF VIRGINIA MILITARY SURVEY 3683 IN THE CITY OF BELLEFONTAINE AND MORE PARTICULARLY DESCRIBED AS FOLLOWS:

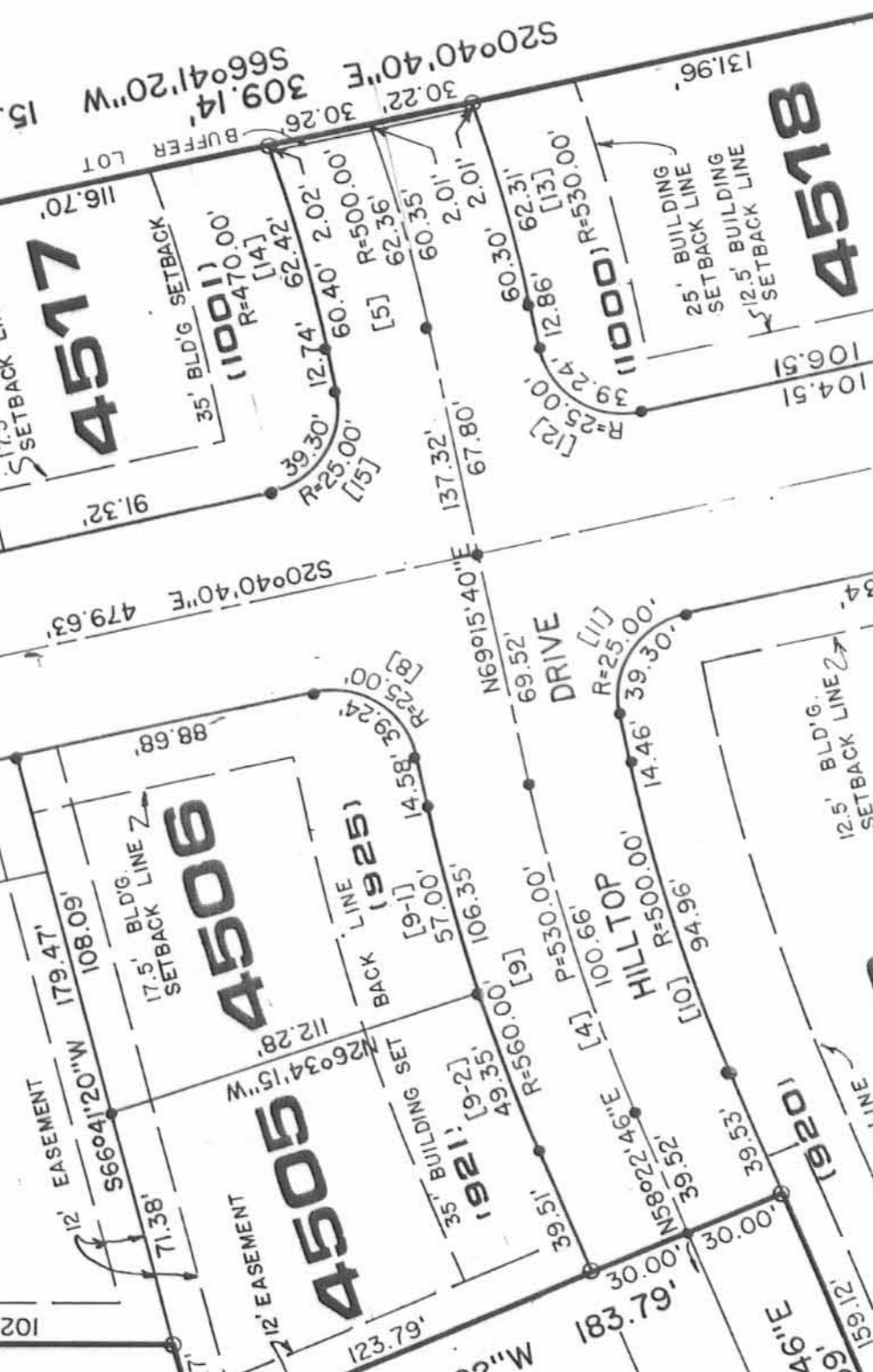
Table with columns: NO., RADIUS, ARC, DELTA, TANGENT, CHORD-BEARING. Lists geometric data for various lots.

RESTRICTIONS AND COVENANTS

NO STABLE, POULTRY HOUSE OR YARD SHALL BE CONSTRUCTED OR MAINTAINED ON ANY LOT, WHICH IS ATTACHED TO A HOUSE, AND SHALL BE ERRECTED AND MAINTAINED FOR THE USE OF THE OWNER OR OCCUPANTS OF THE LOT ON WHICH THE GARAGE IS LOCATED.

KNOW ALL MEN BY THESE PRESENTS, that FIRST CHURCH OF GOD, INC., PROPRIETORS OF THE LAND INDICATED ON THE ACCOMPANYING PLAT, have authorized the platting thereof and do hereby dedicate the street to the public use forever.

SAID BUFFER LOTS ARE DEDICATED CONDITIONALLY UNTIL SUCH TIME AS THE ADJACENT LAND IS SUBDIVIDED AND A PART THEREOF IS DEDICATED FOR THE PURPOSE OF EXTENDING THE PUBLIC RIGHT-OF-WAY HEREON SHOWN.



BEFORE ME, a Notary Public in and for said County, personally came James D. Long & Harry D. Long, who acknowledged the signing of the foregoing instrument to be their voluntary act and deed for the uses and purposes therein expressed, as officiating of the First Church of God, Inc. IN WITNESS WHEREOF, I have hereunto set my hand and affixed my official seal this 9th day of March, 1988.

WITNESSES: James D. Long, Harry D. Long, Proprietors. State of Ohio, Logan County.

APPROVED this 17th day of MARCH, 1988. Notary Public, Bellefontaine City Engineer.

APPROVED this 16th day of March, 1988. Chairman, City Planning Commission.

TRANSFERRED this 26th day of April, 1988. Logan County Auditor.

FILED FOR RECORD this 20th day of April, 1988. in Plot Book A, Page 663. Recorded this 20th day of April, 1988. in Plot Book A, Page 663. Logan County Recorder.

THE WITHIN STREETS AND EASEMENTS ARE HEREBY APPROVED AND ACCEPTED FOR PUBLIC MAINTENANCE BY ORDINANCE NO. 88-26 RECORDED IN CITY COUNCIL'S RECORD BOOK 1988 ON THIS 14th DAY OF April 1988.



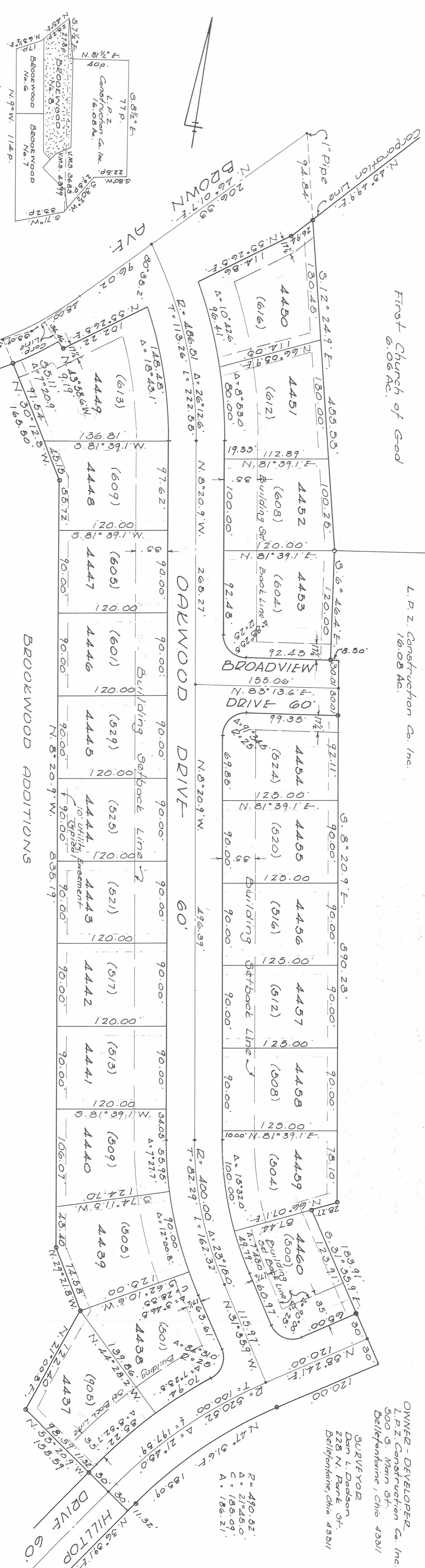
DESCRIPTION CHECKED LOGAN CO. ENGINEER BY [Signature] 4-20-88. The accompanying plat represents a subdivision of land in V.M.S. Nos. 4399 & 3683 CITY OF BELLEFONTAINE, LAKE TOWNSHIP, LOGAN COUNTY, OHIO. The tract has an area of 191 acres in streets and 597 acres in lots, making a total of 788 acres.

Table with columns: LOT NO., PARCEL NO. Lists lot and parcel numbers for lots 4505 through 4510.

WITNESSES: [Signatures of witnesses].

APPROVED this 17th day of MARCH, 1988. Notary Public, Bellefontaine City Engineer.





First Church of God  
6.06 AC.

L. P. Z. Construction Co. Inc.  
16.08 AC.

OWNER - DEVELOPER  
L. P. Z. Construction Co. Inc.  
500 S. Main St.  
Bellefontaine, Ohio 43311

SURVEYOR  
Dan L. Dodson  
228 N. Park St.  
Bellefontaine, Ohio 43311

Deed Vol. 332, P. 862  
Dec. 11, 1966 O.E.R.

Brown Avenue  
Curve Data  
A = 1810.5  
R = 400.00  
T = 63.98  
L = 126.88

The accompanying plat represents a subdivision of land in V.M.S. 4399 and V.M.S. 3683, City of Bellefontaine, Lake Township, Logan County, Ohio. The tract has an area of 6.78 acres in lots and 2.56 acres in streets making a total of 9.34 acres in which 1.12 acres are in V.M.S. 3683 and 8.22 acres are in V.M.S. 4399. All measurements are in feet and decimals of a foot. All measurements on curves are chord distances. Indicates Conc. R/W Monument. I hereby certify that the accompanying plat is a correct representation of BROOKWOOD ADDITION No. 8 as surveyed by me in July 1978.

Dan L. Dodson  
Reg. Surveyor  
Bellefontaine, Ohio

Numbers shown thus on lots (620) are City of Bellefontaine house numbers.

Easements for construction and maintenance of Public and Private utilities, unless otherwise shown, are ten feet (10') in width adjacent to all rear lot lines. No permanent structure, planting, etc., shall be permitted within the easement area.

Lot No	CURVE DATA	Chord	Change Bearings	
4437	550.52	57.27	85.31	N.41°30'47"E
4438	430.00	324.6	28.33	N.17°21'26"E
"	550.52	34.31	36.86	N.10°09'45"E
4439	430.00	1260.8	90.16	N.27°49'07"E
4440	430.00	727.7	56.06	N.12°04'17"W
4441	456.91	1848.1	147.14	N.17°42'51"W
4442	456.91	718.4	55.15	N.62°36'17"E
4443	516.91	1072.6	76.53	S.27°33'37"E
4444	516.91	875.6	80.08	S.12°41'47"E
4445	250.00	887.6	38.08	S.55°33'42"E
4446	250.00	913.4	39.76	S.37°12'58"W
4447	370.00	1592.0	120.31	S.16°36'37"E
4448	370.00	742.0	48.83	S.27°24'47"E
4449	26.00	70.00	37.27	S.76°53'37"E

KNOW ALL MEN BY THESE PRESENTS that L. P. Z. Construction Co. Inc., preparers of the land indicated on the accompanying plat have authorized the platting thereof and do hereby dedicate the streets to the public use forever, including that part of Brown Ave. owned by the grantors not heretofore dedicated, and do hereby dedicate the utility easements to the City of Bellefontaine.

*Edward J. Dodson*  
President  
L. P. Z. Construction Company Inc.

*James E. Bell*  
Secretary-Treasurer  
L. P. Z. Construction Company Inc.

*Edward J. Dodson*  
Notary Public  
June 3, 1982  
My Commission Expires

STATE OF OHIO  
COUNTY OF LOGAN SS

Be it remembered that on this the 17 day of March in the year of our Lord One Thousand Nine Hundred and Eighty One, before me a notary public in and for said County, personally came Gordon L. Zell, President and Corline P. Zell, Secy.-Treas., officers of L. P. Z. Construction Company Inc., grantors in the foregoing declaration, who acknowledged the signing thereof to be their free and voluntary act and deed as such officers and the free and voluntary act and deed of said Corporation.

Approved by the Planning Commission this 10 day of November 1982.

*Charles W. Perry*  
Chairman  
Bellefontaine Planning Commission

The accompanying plat was adopted by Ordinance No. 82-54 as an addition to the City of Bellefontaine at a regular meeting of the City Council on the 14 day of September 1982.

*Richard A. Wagner*  
President of Council

Approved this 16 day of November 1982.

*Daniel A. Keller*  
Acting City Engineer  
Bellefontaine, Ohio

The within lots transferred this 17 day of September 1982.

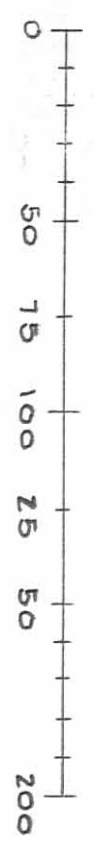
*Gray H. Matter*  
Recorder of Logan County

**BROOKWOOD ADDITION No. 8**  
**BELLEFONTAINE, OHIO**

V.M.S. 4399  
LAKE TOWNSHIP  
LOGAN COUNTY

V.M.S. 3683

SCALE 1" = 50'



SHEET ONE OF TWO SHEETS



RESTRICTIONS AND COVENANTS

1. No stable, poultry house or yard shall be constructed or maintained on any lot; no domestic animals or fowls or poultry shall be raised, kept or permitted, except that dogs and cats may be kept provided that they are not kept, bred or raised thereon for commercial purposes.
2. Garages or carports must be attached to a house or attached to a breezeway which is attached to a house, and shall be erected and maintained for the use of the owner or occupants of the lot upon which the garage is located.
3. Off street parking is restricted to licensed motor vehicles; recreation vehicles, snow mobiles, boats, motor cycles and similar equipment shall be stored within the garage.
4. No residence shall be constructed with less than 1,000 square feet of living area, exclusive of any porches, garages and basements.
5. No wall or fence whatsoever shall be erected or maintained within the set-back area of any lot as to any street except that a fence may be attached to a house or a garage provided it does not extend more than ten (10) feet in the direction of the street upon which the house fronts with a maximum height of three (3) feet.
6. No hedge within the setback area of any dwelling house as to any street shall have a height greater than three (3) feet above the finished graded surface of the ground upon which the hedge is located.

Reviewed this 23<sup>rd</sup> day of NOVEMBER 1982.

James J. Kennedy  
Chairman  
Lake Township  
Board of Trustees

The within streets are hereby approved and accepted for public maintenance by Ordinance No. 82-54 recorded in City Council record book 1982 on this 14<sup>th</sup> day of December 1982

Michael J. Kennedy  
W. Richard Horn  
Chester M. Lee  
Bellefontaine  
City Council

Approved this 19<sup>th</sup> day of November 1982.

Chester R. Kuritz, P.E., P.S.  
Logan County  
Engineer

The accompanying plat is hereby approved and accepted by the Board of Logan County Commissioners at a regular meeting this 19<sup>th</sup> day of November 1982.

Donald E. Lawrence  
John A. Jeffrey  
Warren W. Smith  
Logan County  
Commissioners

Approved this 23 day of November 1982.

William R. Verbeke, D.V.M.  
Logan County  
Health Dept.

That part of Brown Avenue dedicated to the public on the accompanying plat is hereby approved and accepted for public maintenance by Resolution No. 440-82 recorded in Commissioners Journal page \_\_\_\_\_ on this 19<sup>th</sup> day of November 1982.

Approved this 23 day of November 1982

Willis Bayless  
Logan Soil and Water  
Conservation Dist.

Donald E. Lawrence  
John A. Jeffrey  
Warren W. Smith  
Logan County  
Commissioners

The accompanying plat contains 9.34 acres, of which 8.87 acres are in the City of Bellefontaine and 0.47 acres are in Lake Township.

BROOKWOOD ADDITION No. 8  
BELLEFONTAINE, OHIO