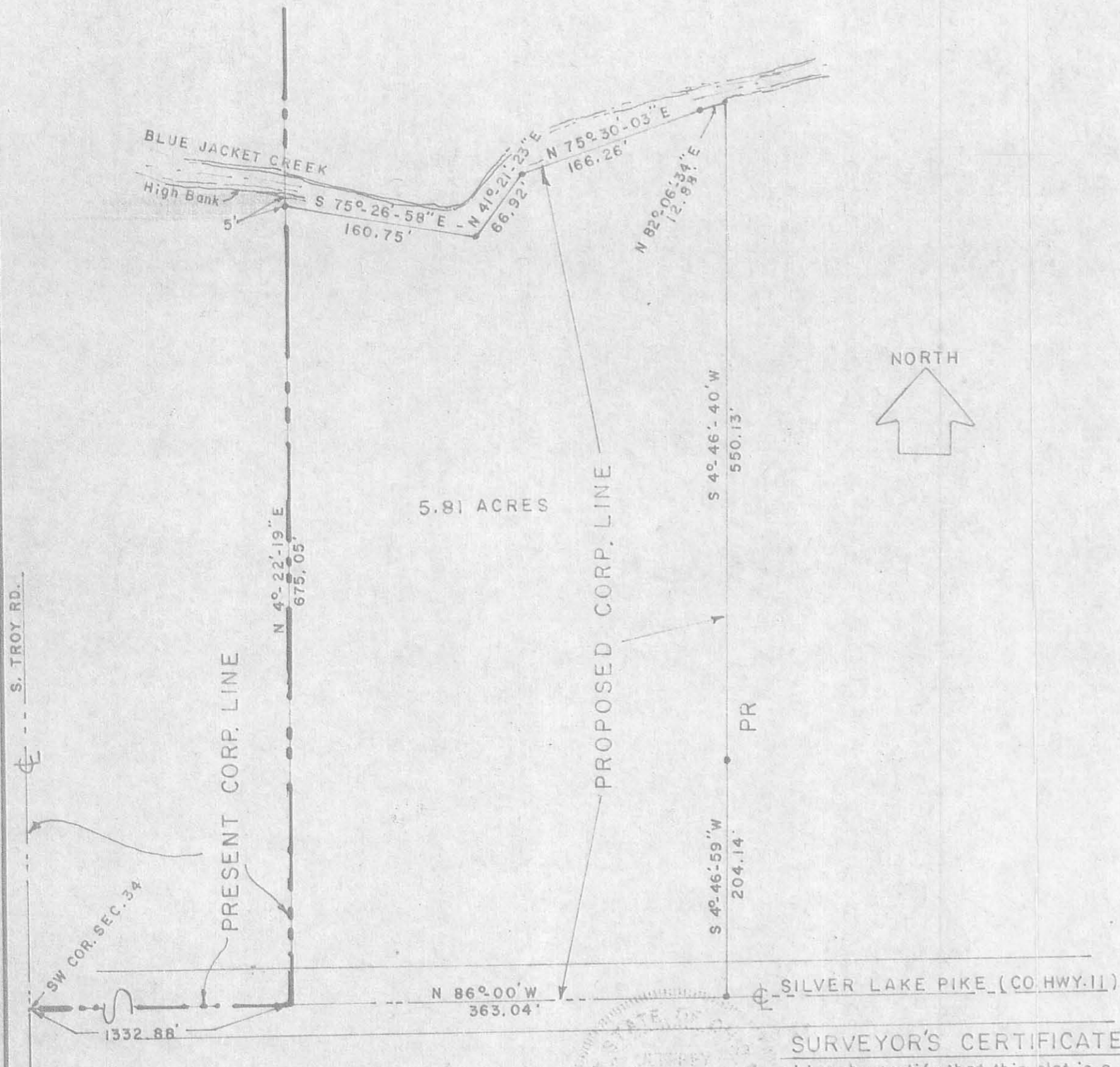


**ANNEXATION MAP**  
 TERRITORY ANNEXED TO CITY OF BELLEFONTAINE  
 LOCATED IN  
 SW. QUARTER OF SECTION 34, T-4-E, R-14-N,  
 LAKE TOWNSHIP, LOGAN COUNTY, OHIO



LOGAN COUNTY COMMISSIONERS

APPROVED: Warren W. Smith DATE May 22  
Ginae C. Corwin May 27 81

JOURNAL NO. \_\_\_\_\_ PAGE NO. \_\_\_\_\_

BELLEFONTAINE CITY ENGINEER  
 Reviewed: Donald G. Moon 7-27-81  
 DATE

BELLEFONTAINE CITY PLANNING COMMISSION  
 APPROVED: Charles W. Long Jr. Date 7-21-81  
 Chairman

LAKE TWP. TRUSTEES  
 Reviewed: \_\_\_\_\_ Date \_\_\_\_\_  
 Chairman

BELLEFONTAINE CITY COUNCIL  
 ADOPTED: This 22<sup>nd</sup> Day of September 1981  
Donald W. Sesta Ardythe Predmore  
 Mayor Clerk  
 Ordinance No. 81-43

LOGAN COUNTY ENGINEER  
 APPROVED: Chester R. Kurtz, P.E., P.S. Date 5-26-81

**265479**

TRANSFERRED: Mary G. Slater 10-15-81  
 LOGAN COUNTY AUDITOR CABINET A

RECORDED: This 15<sup>th</sup> Day of October 1981 IN PLAT BOOK (SLIDE 616)  
 LOGAN COUNTY RECORDER Caroline Collins

**SURVEYOR'S CERTIFICATE**

I hereby certify that this plat is a correct representation of property to be annexed to the City of Bellefontaine, Ohio.

Jeffrey I. Lee  
 Jeffrey I. Lee  
 Reg. Surveyor No. 6359

INDEXED ON MAP  
6585 1P

TOLERANCES (EXCEPT AS NOTED)	REVISIONS			DRAWN BY	SCALE 1" = 100'	MATERIAL
	NO.	DATE	BY			
DECIMAL	1			CHK'D	DATE	DRAWING NO.
±	2					
FRACTIONAL	3					
±	4					
ANGULAR	5					
±				TRACED	APP'D	L-776-3

TOTAL ACRES ANNEXED = 5.81 (Deed Vol. 389, Pg. 126)