

PLAT OF  
 LOT No. 3062  
 BELMOT ADD.  
 BELLEFONTAINE, OHIO  
 1955  
 SCALE 1" = 10'

Surveyed & Drawn by  
 Dan W. Dodson  
 Surveyor in Training  
 August 27, 1955

7003

S-134

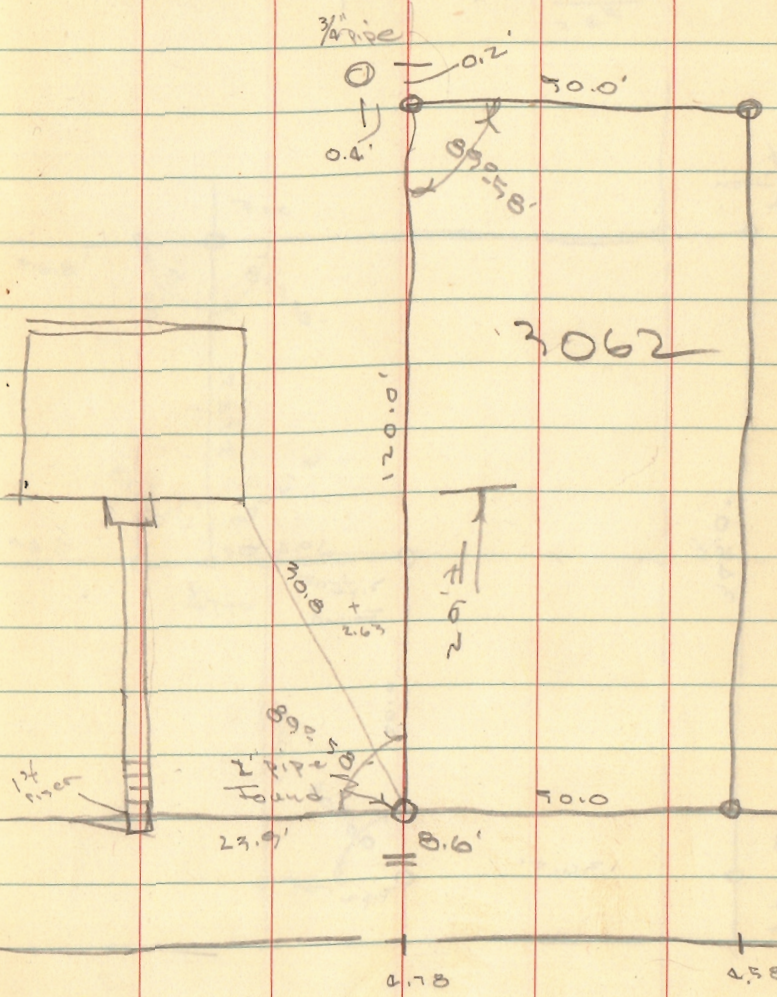
S-134



0.78  
2.67  
3.15

Martin Survey  
Bellefontaine

0.0002  
188.002



3062

Washington St

INDEXED ON MAP  
7003