

Lee Surveying and Mapping Co.



CLAYTON M. LEE, P.S.
JEFFREY I. LEE, P.S.

855 East Sandusky Avenue
Bellefontaine, Ohio 43311
Phone 593-5780



Farm Surveys • Lot Surveys • Topography • Subdivisions • Construction Layout

WESTERMAN TO ROPP

Lying in the City of Bellefontaine, V.M.S. 4478, Lake Township,
Logan County, Ohio.

Being out of that original 13.58 acres deeded and described in
Volume 376, Page 703 of the Logan County Records of Deeds. More par-
ticularly described as follows:

Beginning at an iron rod found on the west line of the Donald and
Carolyn Ropp lands, marking the northeast corner of said 13.58 acres and
being on the ~~East~~ corporation line of Bellefontaine a distance northerly,
along said line, of 710.00 feet from the center-line of Reservoir Road.

THENCE, with the east line of said 13.58 acres, S 8°-05' W, a dis-
tance of 290.34 feet.

THENCE, parallel to the north line of said 13.58 acres, N 83°-40' W,
a distance of 326.62 feet to a concrete monument.

THENCE, parallel to the east line of Westerman Allotment No. 2, the
following three (3) bearings and distances:

N 5°-59'-03" E, 96.72 feet (South line of Firethorn Drive extended
easterly).

N 83°-40' W, a distance of 14.64 feet along said south line.

N 5°-59'-03" E, a distance of 193.60 feet to the north line of said
original 13.58 acres.

THENCE, with the north line of said original 13.58 acres, S 83°-40' E,
a distance of 351.91 feet to the point of beginning.

Containing 2.277 acres.

Prepared by:

Clayton M. Lee

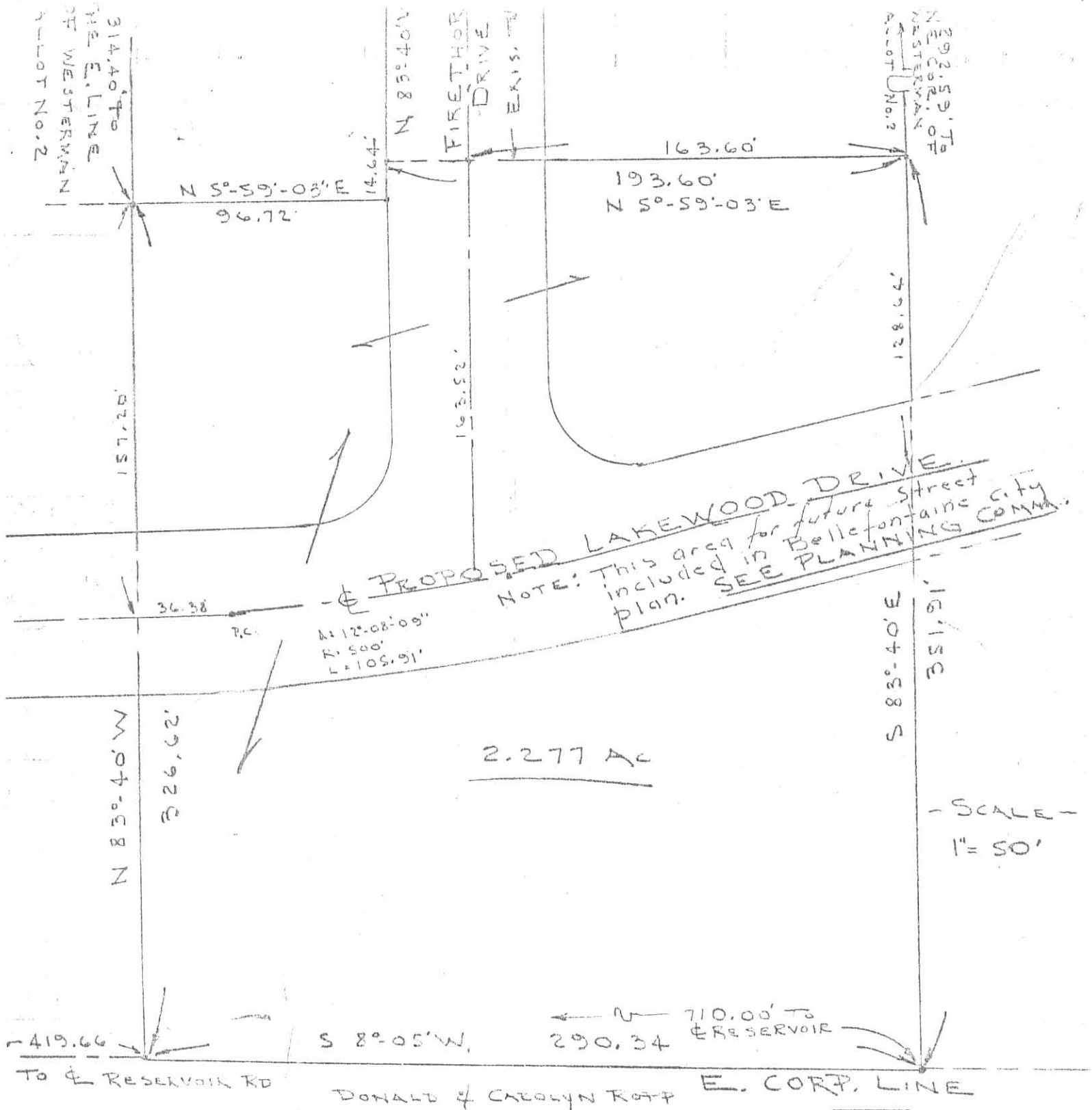
Clayton M. Lee
Registered Surveyor No. 6184
July 23, 1984
Revised August 15, 1984

7105 ID

INDEXED ON MAP



ORIGINAL STAMP IN GREEN
L-1119-5-A



2.277 ACRES OUT OF
 THE WESTERMAN ORIG. 13.58 ACRE TRACT (VOL. 376, P. 703)
 V.M. S. 4478, CITY OF BELLEFONTAINE,
 LAKE TOWNSHIP, LOGAN COUNTY, OHIO

7105 IP

INDEXED ON MAP

By: Clayton M. Lee
 CLAYTON M. LEE
 REG. SURVEYOR 6181
 7-23-84

L-1119-S-2