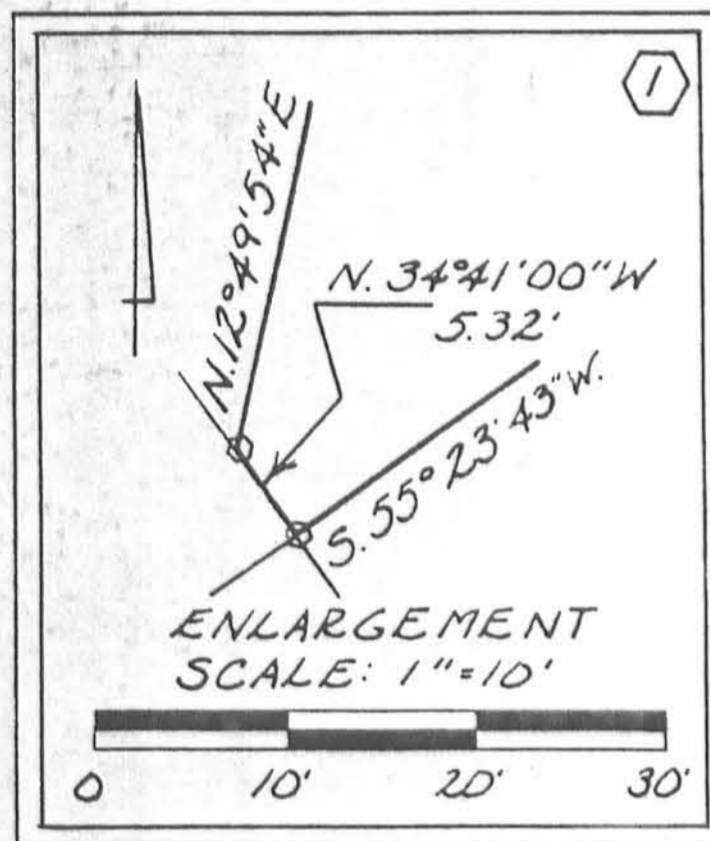


VINCENT PETNO
16.659 AC.
D.B.VOL. 404 PAGE 576

LEGEND:
○ 5/8 INCH IRON BAR FOUND
○ 3/4 INCH IRON PIPE FOUND
○ 1 INCH IRON PIPE FOUND
○ 8 INCH WOOD POST FOUND
FOR DETAIL, SEE ENLARGEMENT

CAROL LEE PETNO
12.00 AC.
O.R.VOL. 50 PAGE 252



RAYMOND E. LEVAN ETUX
1.52 AC.
O.R.VOL. 131 PAGE 461

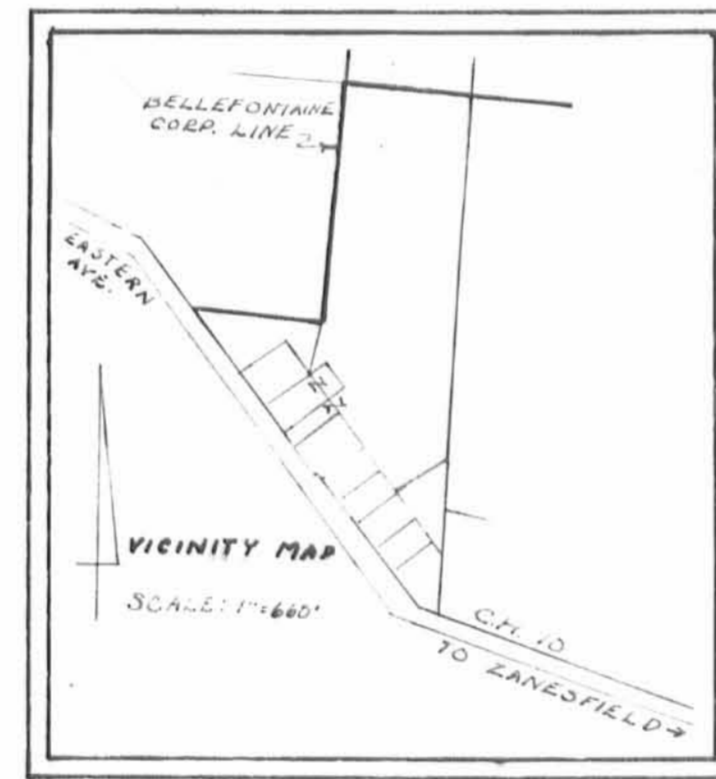
GARY BOLDYARD
O.R.VOL. 37 PG. 902

N. 34° 41' 00\"/>

LAKE TOWNSHIP
JEFFERSON TOWNSHIP

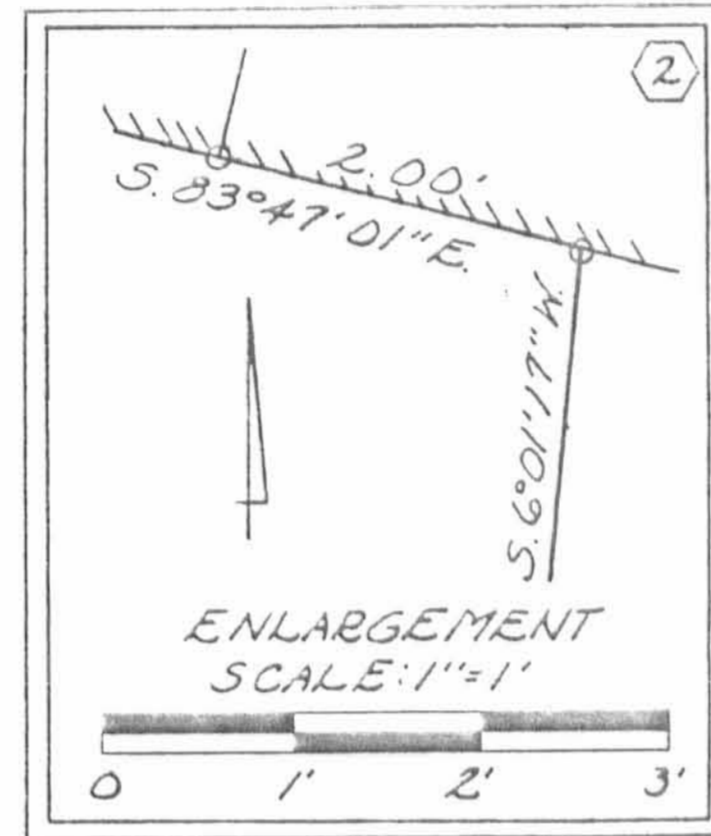
GERALD BOTKIN ETUX
13.046 AC.
O.R.VOL. 72 PAGE 319

JAMES L. SHOOT'S, ETUX
60.27 AC.
O.R.VOL. 131 PAGE 158



DENNIS E. BERRY ETUX
0.447 AC.
O.R.VOL. 67 PAGE 787

LUC DEVELOPMENT, INC.
15.123
O.R.VOL. 70 PAGE 933



LEGAL DESCRIPTION

THE FOLLOWING DESCRIBED REAL ESTATE SITUATED IN THE STATE OF OHIO, COUNTY OF LOGAN, TOWNSHIPS OF JEFFERSON AND LAKE BEING PART OF VIRGINIA MILITARY SURVEY 4478 AND PART OF LOT NO. 3 OF KROUSE ALLOTMENT AND MORE PARTICULARLY DESCRIBED AS FOLLOWS:

BEGINNING AT A 5/8 INCH IRON BAR FOUND IN THE EAST LINE OF COUNTY HIGHWAY 10 AT THE SOUTHWEST CORNER OF LOT NO. 3 OF KROUSE ALLOTMENT.

THENCE WITH SAID EAST LINE N. 34° 41' 00\"/>

THENCE N. 55° 17' 24\"/>

THENCE WITH THE EAST LINE OF SAID ALLOTMENT N.34° 41' 00\"/>

THENCE WITH SAID CORPORATION LINE AND SAID CAROL PETNO'S EAST LINE N. 5° 16' 44\"/>

THENCE WITH SAID LEVAN'S EAST LINE N. 12° 49' 54\"/>

THENCE WITH SAID CORPORATION LINE AND SAID CAROL PETNO'S EAST LINE N. 5° 16' 44\"/>

THENCE WITH SAID CORPORATION LINE, SAID VINCENT PETNO'S SOUTH LINE, THE SOUTH LINE OF GLENWOOD EAST ALLOTMENT NO. 1 AND THE SOUTH LINE OF LUC DEVELOPEMENT INC.'S 15.123 ACRE TRACT AS DESCRIBED IN O. R. VOL. 70 PAGE 933 S. 83° 47' 01\"/>

THENCE WITH SAID SHOOT'S WEST LINE S. 6° 01' 17\"/>

THENCE WITH SAID BERRY'S NORTH LINE S. 55° 05' 15\"/>

THENCE WITH SAID BERRY'S NORTH LINE S. 55° 05' 15\"/>

THENCE WITH THE EAST LINE OF SAID ALLOTMENT N. 31° 41' 00\"/>

THENCE WITH THE NORTH LINE OF SAID LOT NO. 4 S. 55° 17' 24\"/>

CONTAINING 13.046 ACRES MORE OR LESS OF WHICH 0.275 ACRE IS IN LOT NO. 3 OF KROUSE ALLOTMENT, 0.108 ACRE IS IN LAKE TOWNSHIP - AND 12.663 ACRES ARE IN JEFFERSON TOWNSHIP.

LOGAN COUNTY COMMISSIONERS:

John A. Jeffery 10/22/91
Donald E. ... 10-22-91
George W. Clayton 10-22-91

LOGAN COUNTY ENGINEER:

Chester R. Kurtz, P.E., P.S. 10-30-91

CHAIRMAN, JEFFERSON TOWNSHIP TRUSTEES:

Justin Butler 11-19-91

CHAIRMAN, LAKE TOWNSHIP TRUSTEES:

James C. ... 10-29-91

BELLEFONTAINE CITY ENGINEER:

Fred L. ... 10/10/91

MAYOR OF BELLEFONTAINE:

Richard J. ... 10-01-91

PRESIDENT, CITY COUNCIL:

William R. Patterson 9-30-91

CLERK OF COUNCIL:

Audette ... 11/19/91

BELLEFONTAINE CITY PLANNING COMMISSION:

Joseph A. ... 10-15-91

L. O. C. PLANNING DIRECTOR:

Carroll R. ... 10-10-91

ORDINANCE NUMBER: 91-74(8-27-91)

TRANSFERRED THIS 21st DAY OF NOVEMBER, 1991

Jan ...
LOGAN COUNTY AUDIOR

337049
RECORDED IN PLAT CABINET A, SLIDE 733-A.
RECEIVED FOR RECORD AT 2:09 O'CLOCK P.M.
THIS 21st DAY OF NOVEMBER, 1991.

Carolyn Collins
LOGAN COUNTY RECORDER

PLAT PRE-APPROVED:

Jon ... 9-26-91

PLAT CHECKED:

Jon C. ... 11-20-91

THIS ANNEXATION MAP REPRESENTS AN AREA OF LAND THAT HAS BEEN RESEARCHED AND COMPILED FROM AVAILABLE RECORDED DEEDS, MAPS AND OTHER RECORDS OBTAINED ON FILE IN THE LOGAN COUNTY RECORDS AND/OR THE CITY OF BELLEFONTAINE. I HEREBY CERTIFY THAT THIS IS A CORRECT REPRESENTATION OF THOSE RECORDS.

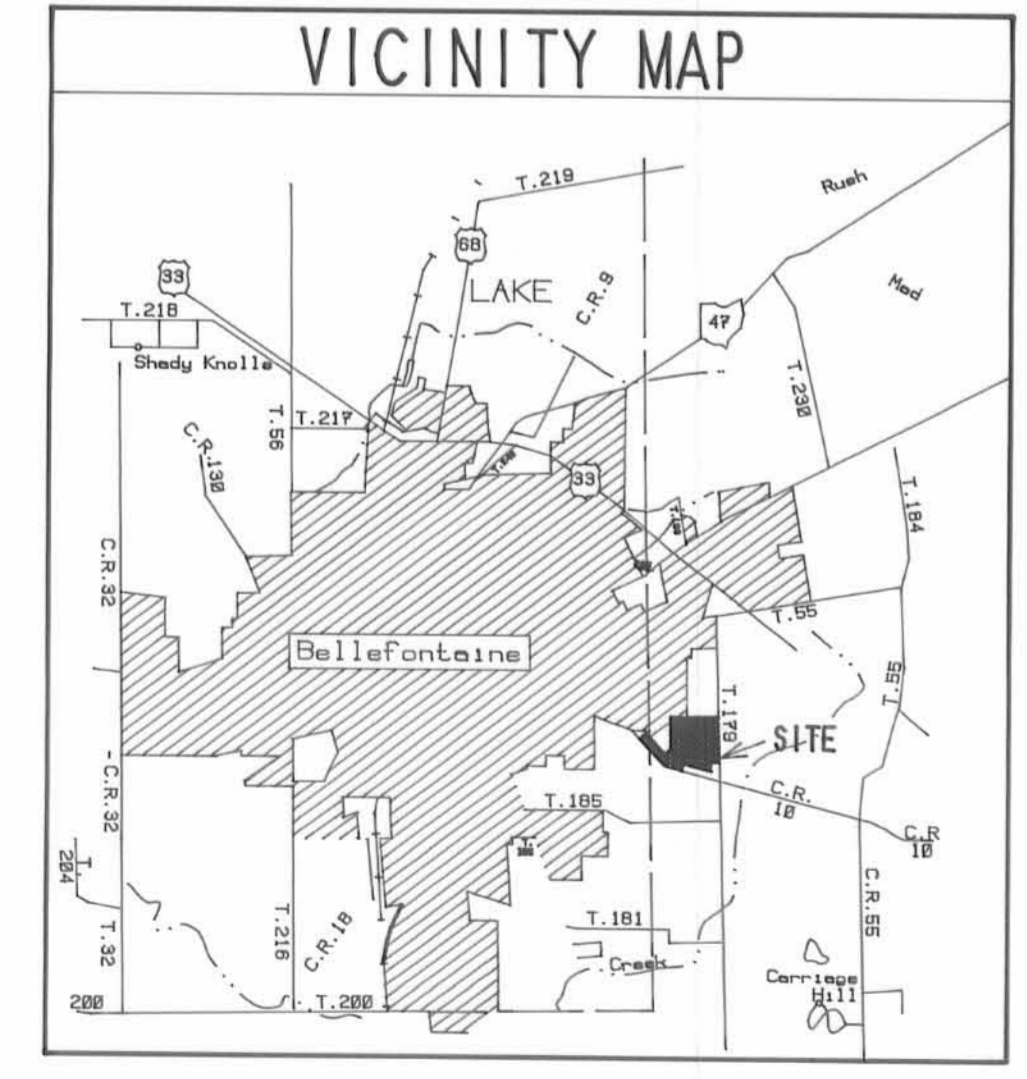
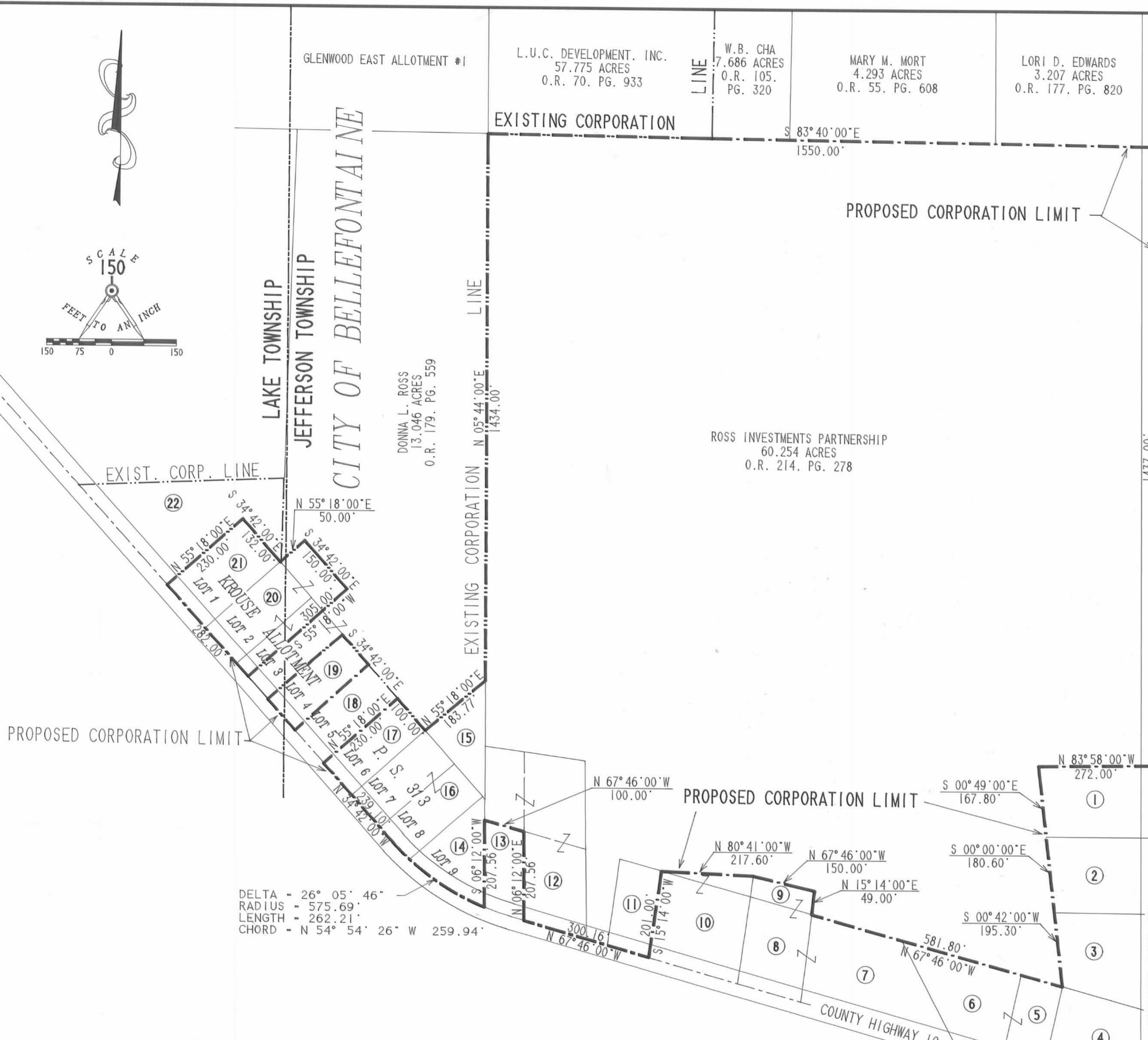
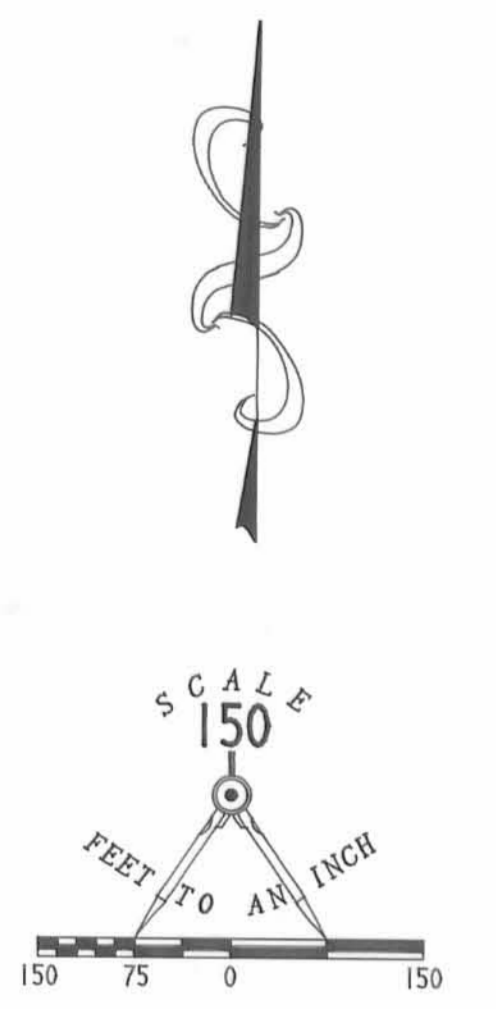


Leslie H. Geslin
REG. SURVEYOR 5248
RUSHSVLVANIA, OHIO

ANNEXATION MAP

SCALE: 1" = 100'





1. STEVEN E. PEVER, 1.00 ACRE, O.R. 112, PG. 635
2. KIRK A. KEGG, 1.00 ACRE, VOL. 372, PG. 793
3. NITA M. WOODRUFF, 1.00 ACRE, O.R. 54, PG. 382
4. THOMAS E. ELLIOTT, 1.14 ACRES, VOL. 318, PG. 327
5. JOHN RUSSELL, 0.46 ACRE, VOL. 378, PG. 16
6. JOHN RICHARD RUSSELL, 0.82 ACRE, VOL. 379, PG. 426
7. JOHN A. DAVIS, 1.35 ACRES, VOL. 393, PG. 708
8. JOHN A. DAVIS, 0.69 ACRES, VOL. 328, PG. 726
9. JOHN A. DAVIS, 0.17 ACRE, VOL. 394, PG. 192
10. LARRY K. LEWIS, 1.12 ACRES, O.R. 108, PG. 664
11. RALPH E. COYER, SR., 0.46 ACRE, O.R. 63, PG. 665
12. BILLIE G. WESTFALL, 1.72 ACRES, VOL. 338, PG. 188
13. GEORGE M. HEIZER, 0.46 ACRE, VOL. 365, PG. 302
14. DENNIS E. BERRY, LOT 9, KROUSE ALLOTMENT, O.R. 27, PG. 143
15. DENNIS E. BERRY, 0.447 ACRE, O.R. 67, PG. 787
16. RICHARD M. HESS, LOTS 8 & 9, KROUSE ALLOTMENT, O.R. 224, PG. 748
17. ROBERT MITCHELL, LOT 7, KROUSE ALLOTMENT, O.R. 170, PG. 972
18. JESTEN P. HUNT, LOT 5, KROUSE ALLOTMENT, VOL. 316, PG. 519
19. DIANE L. VERMILLION, LOT 4, KROUSE ALLOTMENT, O.R. 174, PG. 910
20. DONNA L. ROSS, LOT 2 & PT. LOT 3, KROUSE ALLOTMENT AND 0.258 ACRE, O.R. 200, PG. 694
21. KENNETH E. METZ, LOT 1, KROUSE ALLOTMENT, VOL. 273, PG. 206
22. RAYMOND E. LEVAN, 1.52 ACRES, O.R. 131, PG. 461

TRACT I:
Lying in Virginia Military Survey 4478, Lake Township and Jefferson Township, Logan County, Ohio.
Being Lots 1, Lot 2, part of Lot 3 of the Krouse Allotment (Logan County Records of Plats Cabinet A, Slide 313), and the Donna L. Ross 0.258 acre tract (O.R. 200, Pg. 694) and being more particularly described for annexation as follows:
Beginning at the southwest corner of said Lot 1 and on the center-line of County Highway 10.
THENCE, with the westerly line of said Lot 1, N 55°-18'-00" E, a distance of 230.00 feet to a point on the northeast corner of said Lot 1.
THENCE, with the northerly line of the said Lot 1, S 34°-42'-00" E, a distance of 132.00 feet to a point on the northeasterly corner of said Lot 1.
THENCE, with the present corporation line and the lines of the Donna L. Ross 0.258 acre tract (O.R. 200, Pg. 694) the following two courses:
N 55°-18'-00" E, a distance of 50.00 feet to a point.
S 34°-42'-00" E, a distance of 150.00 feet to a point.
THENCE, continuing with the present corporation line, with the easterly line of the said 0.258 acre tract, and through Lot 3 of the Krouse Allotment, S 55°-18'-00" W, a distance of 305.00 feet to a point on the center-line of County Highway 10.
THENCE, with the center-line of County Highway 10, N 34°-42'-00" W, a distance of 282.00 feet to the point of beginning.
Containing 1.747 acres. 1.348 acre is in Lake Township of which 1.344 acre is in Lots 1, 2, and 3 and 0.399 acre is in Jefferson Township of which 0.145 acre is in Lots 2 and 3.
All bearings and distances are from deed or plat records. This description is for annexation purposes only. This is not a boundary survey as defined in OAC 4733-37.

TRACT II:
Lying in Virginia Military Survey 4478, Lake Township and Jefferson Township, Logan County, Ohio.
Being Lot 4 of the Krouse Allotment (Logan County Records of Plats Cabinet A, Slide 313).
Containing 0.528 acre of which 0.455 acre is in Jefferson Township and 0.073 acre is in Lake Township.

TRACT III:
Lying in Virginia Military Survey 4478, Jefferson Township, Logan County, Ohio.
Being Lots 6, 7, 8, and 9 of the Krouse Allotment (Logan County Records of Plats Cabinet A, Slide 313) and the Ross Investments Partnership 60.254 acre tract (O.R. 214, Page 278, The Cover 0.46 acre tract (O.R. 63, Pg. 665), the Westfall 1.72 acre tract (Vol. 338, Pg. 188), and the Berry 0.447 acre tract (O.R. 67, Pg. 787) and being more particularly described as follows:
Beginning at an angle point in the present corporation line on the center-line of County Highway 10 at the southwest corner of said Lot 6.
THENCE, with the present corporation line and the lines of Lot 6 the following two courses:
N 55°-18'-00" E, a distance of 230.00 feet to a point.
S 34°-42'-00" E, a distance of 100.00 feet to a point.
THENCE, with the westerly line of the said 0.447 acre tract and the existing corporation line, N 55°-18'-00" E, a distance of 183.77 feet to a point.
THENCE, with the existing corporation line and the lines of the said 60.254 acre tract the following two courses:
N 5°-44'-00" E, a distance of 1434.00 feet to a point.
S 83°-40'-00" E, a distance of 1550.00 feet to a point.
THENCE, with the center-line of Township Road 179 and the east line of the said 60.254 acre tract, S 6°-02'-00" W, a distance of 1437.00 feet to a point.
THENCE, with the lines of eight parcels the following nine courses:
The Steven E. Pever 1.00 acre tract (O.R. 112, Pg. 635), N 83°-58'-00" W, a distance of 272.00 feet to a point.
S 00°-49'-00" E, a distance of 167.80 feet to a point.
The Kirk A. Kegg 1.00 acre tract (Vol. 372, Pg. 793), S 00°-00'-00" E, a distance of 180.60 feet to a point.
The Nita M. Woodruff 1.00 acre tract (O.R. 54, Pg. 382), S 00°-42'-00" W, a distance of 195.30 feet to a point.
The north lines of the John Russell 0.46 acre tract (Vol. 378, Pg. 16), the John Richard Russell 0.82 acre tract (Vol. 379, Pg. 426), and the John A. Davis 1.35 acre tract (Vol. 393, Pg. 708), N 67°-46'-00" W, a distance of 581.80 feet to a point.
The John A. Davis 0.17 acre tract (Vol. 394, Pg. 192), N 15°-14'-00" E, a distance of 49.00 feet to a point.
N 67°-46'-00" W, a distance of 150.00 feet to a point.
The Larry K. Lewis 1.12 acre tract (O.R. 108, Pg. 664), N 80°-41'-00" W, a distance of 217.60 feet to a point.
S 15°-14'-00" W, a distance of 201.00 feet to a point.
THENCE, with the center-line of County Highway 10, N 67°-46'-00" W, a distance of 300.16 feet to a point.
THENCE, with the lines between the said 1.72 acre tract and the George M. Heizer 0.46 acre tract (Vol. 365, Pg. 302) the following two courses:
N 6°-12'-00" E, a distance of 207.56 feet to a point.
N 67°-46'-00" W, a distance of 100.00 feet to a point.
THENCE, with the east line of Lot 9 of the aforementioned Krouse Allotment, S 6°-12'-00" W, a distance of 207.56 feet to a point on the center-line of County Highway 10.
THENCE, with the center-line of County Highway 10 on a curve to the right having a central angle of 26°-05'-46", a radius of 575.69 feet, an arc length of 262.21 feet, and a chord bearing N 54°-54'-26" W, a distance of 259.94 feet to a point.

THENCE, with the center-line of County Highway 10 and the southerly lines of Lots 8, 7, and 6 of the said Krouse Allotment, N 34°-42'-00" W, a distance of 239.10 feet to the point of beginning.
Containing 64.985 acres of which 2.104 acres are in Lots 6, 7, 8, and 9.
All bearings and distances are from deed or plat records. This description is for annexation purposes only and is not a boundary survey as defined in OAC 4733-37.
The above three tracts contain a total of 67.260 acres of which 1.421 acres are in Lake Township and 65.839 acres are in Jefferson Township.

**CITY OF BELLEFONTAINE
ANNEXATION MAP OF
67.260 DEED ACRES
VIRGINIA MILITARY SURVEY 4478
1.421 ACRES IN LAKE TOWNSHIP
65.839 ACRES IN JEFFERSON TOWNSHIP
LOGAN COUNTY, OHIO**

SURVEYOR'S AFFIDAVIT
THE ABOVE ANNEXATION MAP HAS BEEN PREPARED FROM RECORDS BY LEE SURVEYING AND MAPPING COMPANY.
BEARINGS ARE BASED UPON THE CENTER-LINE OF TOWNSHIP ROAD 178, BEING S 6°-02'-00" W, AND ALL OTHER BEARINGS ARE FROM DEED RECORDS.



JEFFREY I. LEE
PROFESSIONAL SURVEYOR 6359

LOGAN COUNTY COMMISSIONERS	<i>John A. Jeffrey</i>	6/21/94
	<i>Donald E. Lamm</i>	6-27-94
	<i>George W. Clayton</i>	6-21-94
LOGAN COUNTY ENGINEER	<i>Jama K'los</i>	6-23-94
LAKE TOWNSHIP TRUSTEES		
	CHAIRMAN	DATE
JEFFERSON TOWNSHIP TRUSTEES		
	CHAIRMAN	DATE
L.U.C. PLANNING DIRECTOR	<i>James Scott</i>	6-20-94
MAYOR OF BELLEFONTAINE	<i>Richard J. Vicario</i>	
PRESIDENT, CITY COUNCIL	<i>William K. Patterson</i>	6-17-94
CLERK, CITY COUNCIL	<i>Ardythe Redmore</i>	
PLAT PRE-APPROVED	<i>Jon C. Hines</i>	6-14-94
PLAT CHECKED	<i>Jon C. Hines</i>	10-10-94
CITY ORDINANCE NUMBER	94-51	
TRANSFERRED THIS	13 TH DAY OF OCTOBER	19 94
LOGAN COUNTY AUDITOR	<i>Jan Jones</i>	
RECEIVED FOR RECORD AT	10:05 O'CLOCK A.M.	9408117
THIS	13 TH DAY OF October	19 94
LOGAN COUNTY RECORDER	<i>Carolyn Collins</i>	
RECORDED IN PLAT CABINET	A	SLIDE 793A

LEE SURVEYING & MAPPING CO.
143 East Columbus Avenue
BELLEFONTAINE, OHIO 43311
(513) 593-7335

REC'D FOR FILE COPY
11-3-04

Lee Surveying and Mapping Co.



Farm Surveys • Lot Surveys • Topography • Subdivisions • Construction Layout

855 EAST SANDUSKY AVENUE
BELLEFONTAINE, OHIO 43311

(513) 593-5780

CLAYTON M. LEE, P.S.
JEFFREY I. LEE, P.S.

KROUSE - BERRY SURVEY

Lying in V.M.S. 4478, Jefferson Township, Logan County, Ohio.

Being out of that original 15.67 acre tract in the name of Lyle Krouse as deeded and described in Volume 197, Page 110 of the Logan County Records of Deeds and being more particularly described as follows:

Beginning at a 1" iron pipe found at the northwest corner of grantee's Lot No. 7 of the Krouse Allotment as recorded in the plat records of Logan County.

THENCE, with the west line extended of said Lot No. 7, N 55°-18' E, a distance of 183.77 feet to a 5/8" iron rod set on the west line of the Nicholl 60.4 acre tract (Volume 394, Page 188).

THENCE, with the said Nicholl west line and the west line of the Westfall 0.38 acre tract (Volume 338, Page 186), S 6°-14' W, a distance of 280.49 feet to a 1" iron pipe found at the northeast corner of Lot No. 9 of the said Krouse Allotment.

THENCE, with the north line of said Krouse Allotment, N 34°-42' W, a distance of 211.9 feet to the point of beginning.

Containing 0.447 acre.

This description prepared from an actual field survey.
Basis for bearings: North line of Krouse Allotment = N 34°-42' W.

Prepared by:

Clayton M. Lee
Registered Professional Surveyor No. 6181
July 18, 1988

INDEXED ON MAP
7839 1D

KROUSE ALLOTMENT

V.M.S. 4478, JEFFERSON TWP.,

LOGAN COUNTY, OHIO

SCALE = 1" = 100'

L. KROUSE, OR. G.
Vol. 197, Pg. 110

D. NICHOLL
0.4 AC.
Vol. 394, Pg. 188

B. G. WESTFALL
0.38 AC.
Vol. 338, Pg. 186

HEIZER
0.46 AC

SURVEY OF 0.4474 ACRE
V.M.S. 4478, JEFFERSON TWP.,
LOGAN COUNTY, OHIO

By: *Jeffrey I. Lee*
JEFFREY I. LEE
REG. SURVEYOR 6359
JULY 18, 1988

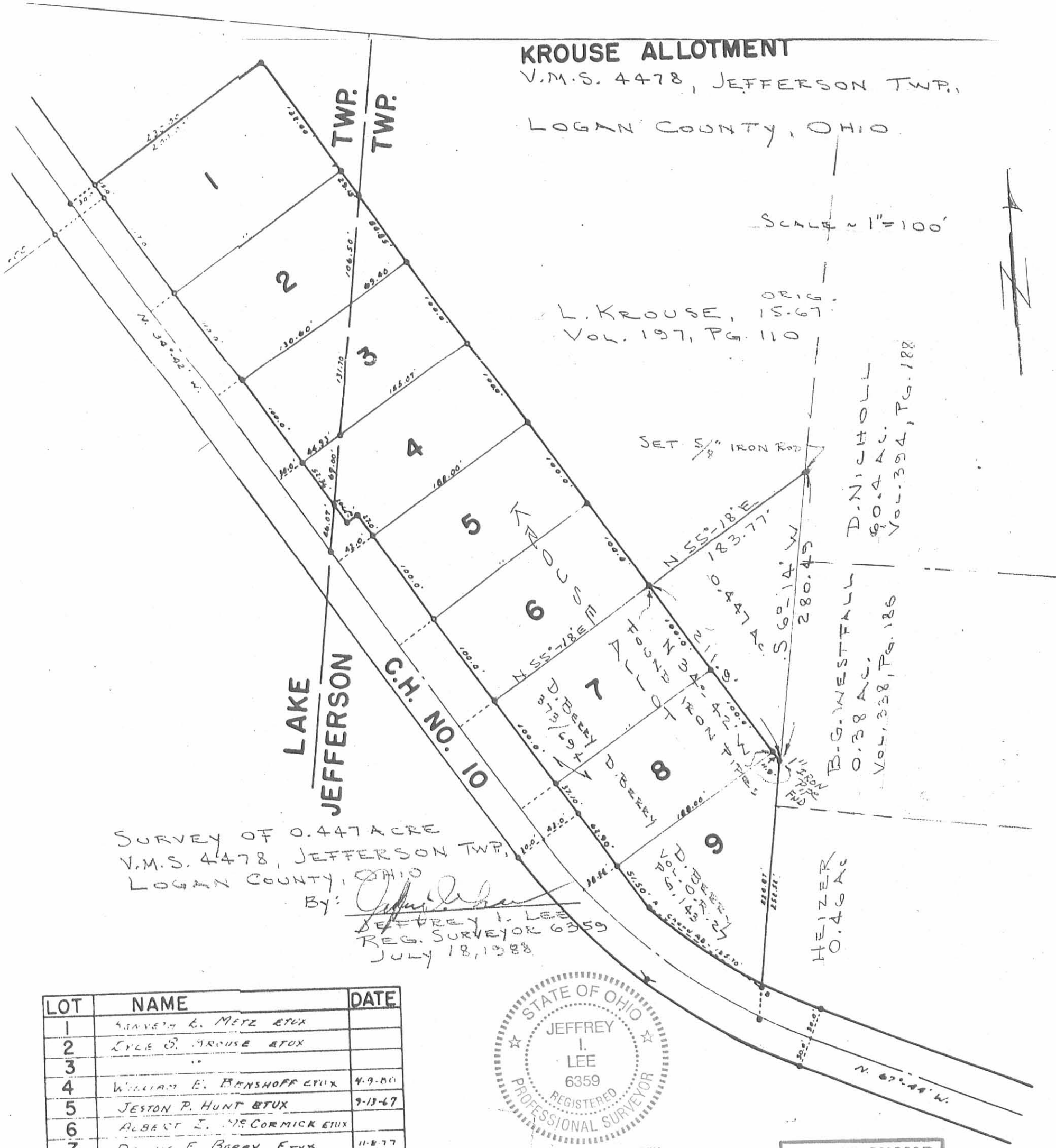


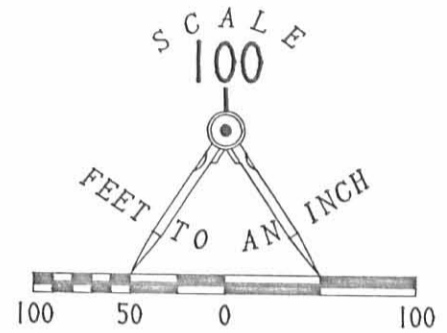
ORIGINAL STAMP IN GREEN

INDEXED ON MAP
7039-1P

L-1469-3

LOT	NAME	DATE
1	GRAVEY E. METZ ETUX	
2	LYLE S. KROUSE ETUX	
3	"	
4	WILLIAM E. BENSHOFF ETUX	4-9-80
5	JESTON P. HUNT ETUX	9-13-67
6	ALBERT I. McCORMICK ETUX	
7	DENNIS E. BERRY ETUX	11-8-77
8	"	
9	LYLE S. KROUSE ETUX	





- 5/8" I. ROD FOUND
- PIPE FOUND
- FENCE POST FOUND
- TACKED HUB SET
- 5/8" I. ROD SET
- ⊗ RAILROAD SPIKE FOUND

2 WORKING DAYS
BEFORE YOU DIG
 CALL TOLL FREE **800-362-2764**
 OHIO UTILITIES PROTECTION SERVICE

PARTIAL RETRACEMENT SURVEY OF THE
 DONNA L. ROSS 13.046 ACRE TRACT
 OFFICIAL RECORD 179, PAGE 559
 VIRGINIA MILITARY SURVEY 4478
 CITY OF BELLEFONTAINE
 LAKE AND JEFFERSON TOWNSHIPS
 LOGAN COUNTY, OHIO

NOTE: THIS IS ONLY A PARTIAL BOUNDARY SURVEY AND DOES NOT MEET ALL OF THE REQUIREMENTS FOR A BOUNDARY SURVEY AS DEFINED IN 4733-37 OF THE OHIO ADMINISTRATIVE CODE, PER THE REQUEST OF THE LAND OWNER.

SURVEYED BY:

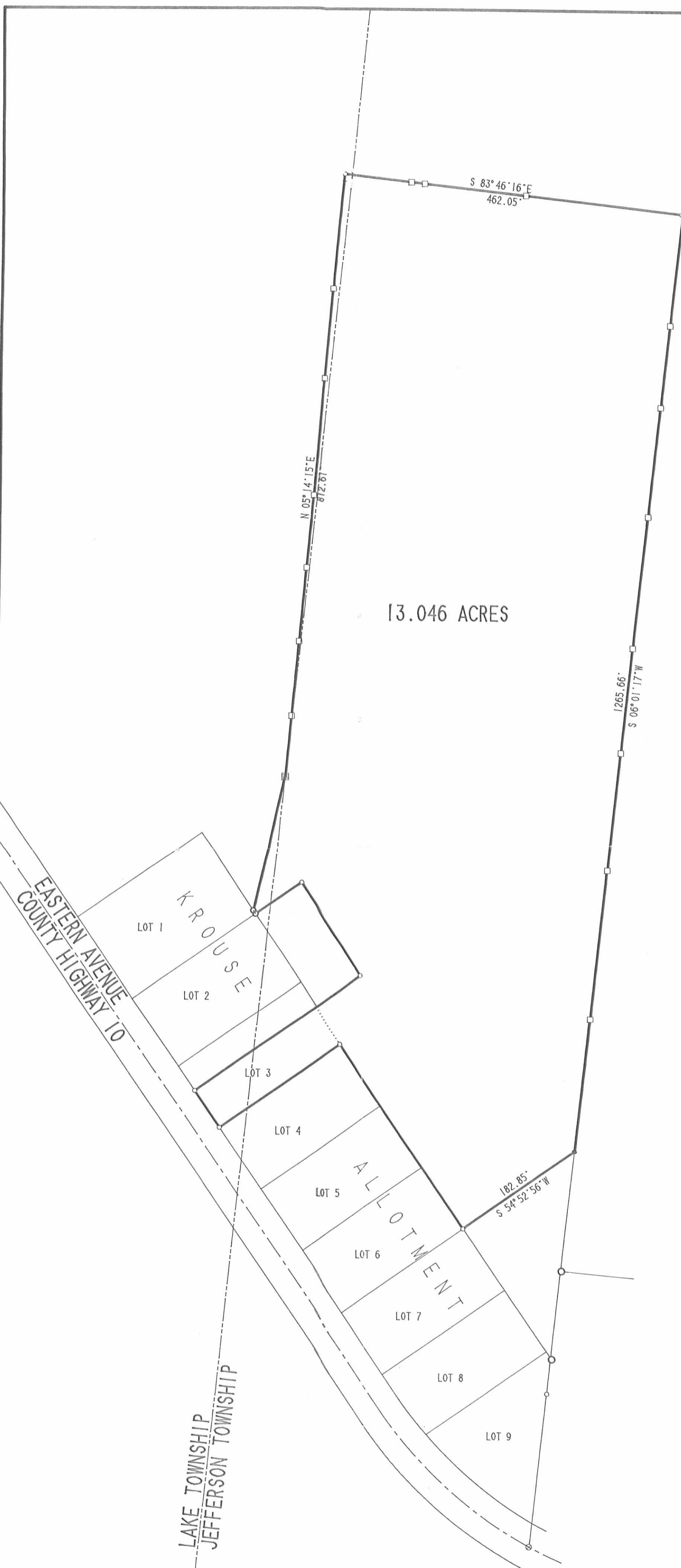
Jeffrey I. Lee
 JEFFREY I. LEE
 PROFESSIONAL SURVEYOR 6359
 FEBRUARY 10, 1993



LEE SURVEYING & MAPPING CO.
 143 East Columbus Avenue
 BELLEFONTAINE, OHIO 43111
 (513) 593-7335

ORIGINAL STAMP IN GREEN D 81 DONNAROS L 2064-2

INDEXED ON MAP
 7639 2P



13.046 ACRES

LAKE TOWNSHIP
 JEFFERSON TOWNSHIP

EASTERN AVENUE
 COUNTY HIGHWAY 10

KROUSE
 LOT 1
 LOT 2

ALLOTMENT
 LOT 3
 LOT 4
 LOT 5
 LOT 6
 LOT 7

LOT 8
 LOT 9

S 83° 46' 16" E
 462.05'

N 05° 14' 15" E
 812.67'

1265.66'
 S 06° 01' 17" W

182.85'
 S 54° 52' 56" W

Received 9-19-88 OK JCH

LESLIE H. GEESLIN
REGISTERED SURVEYOR NO. 5248
P. O. BOX 274
RUSHSVLVANIA, OHIO 43347

TELEPHONE: (513) 468-2793



KROUSE SURVEY
September, 1988

Leslie H. Geeslin

The following described real estate situated in the State of Ohio, County of Logan, Townships of Lake and Jefferson, being part of Virginia Military Survey 4478 and more particularly described as follows:

Beginning at a 0.625 inch iron bar at the southwest corner of Lot 3 of Krouse Allotment, said iron bar being in the east line of County Highway 10.

Thence with said east line N. 34° 41' W. 60.00 feet to a 0.625 inch iron bar.

Thence N. 55° 17' 24" E. 274.79 feet to a 0.625 inch iron bar at the southeast corner of Gary Bolyard's 0.258 acre tract, passing a 0.625 inch iron bar in the east line of said allotment and said Bolyard's southwest corner at 199.70 feet.

Thence with the east line of said Bolyard's tract as described in O. R. Vol. 37 Page 902 N. 34° 42' W. 149.60 feet to a 0.625 inch iron bar.

Thence with said Bolyard's north line S. 55° 23' 43" W. 75.04 feet to a 0.75 inch iron pipe at the northeast corner of Lot 2 of said Allotment.

Thence with the east line of said allotment N. 34° 41' E. 5.32 feet to a 0.75 inch iron pipe at the southeast corner of Glen Junker's 1.52 acre tract as described in D.B. Vol. 216 Page 78.

Thence with said Junker's east line N. 12° 49' 54" E. 185.96 feet to a 8 inch wood corner post at the southeast corner of Vincent Petno's 12.00 acre tract as described in O. R. Vol. 22 Page 329.

INDEXED ON MAP
7839 3D-1

Thence with said Petno's east line and the east line of said Petno's 17.24 acre tract as described in D.B. Vol. 404 Page 576 N. $5^{\circ} 16' 44''$ E. 812.24 feet to 0.625 inch iron bar.

Thence with a south line of said 17.24 acre tract, the south line of Glenwood East Allotment and the south line of Donald Ropp's 126.776 acre tract as described in D.B. Vol. 404 Page 257 S. $83^{\circ} 47' 01''$ E. 462.43 feet to a 0.625 inch iron bar at the northwest corner of Dewey R. Nicholl's 60.27 acre tract as described in D.B. Vol. 404 Page 103.

Thence with said Nicholl's west line S. $6^{\circ} 01' 17''$ W. 1265.66 feet to a 0.625 inch iron bar at the northeast corner of D.E. Berry's 0.447 acre tract as described in O.R. Vol. 67 Page 787.

Thence with said Berry's north line S. $55^{\circ} 05' 15''$ W. 182.92 feet to a 1 inch iron pipe at the northeast corner of Lot 7 of said Krouse Allotment.

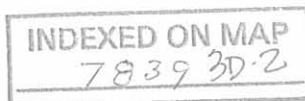
Thence with the east line of said Allotment N. $34^{\circ} 41'$ W. (This bearing is assumed and all other bearings are from angles and distances measured in this field survey) 299.75 feet to a 0.625 inch iron bar at the northeast corner of Lot 4.

Thence with the north line of said Lot 4 S. $55^{\circ} 17' 24''$ W. 199.70 feet to the place of beginning.

Containing 13.046 acres more or less.

The above described 13.046 acre tract being the south 60 feet of Lot 3, containing 0.275 acre of which 0.092 acre is in Lake Township and 0.183 acre is in Jefferson Township, and having 0.108 acre in Lake Township and 12.663 acres in Jefferson Township. The above described 13.046 acre tract being the remainder of Lyle S. Krouse's 20 acre tract as described in D. B. Vol. 197 Page 110.

Reference is hereby made to a plat of this survey on file with the Logan County Engineer.



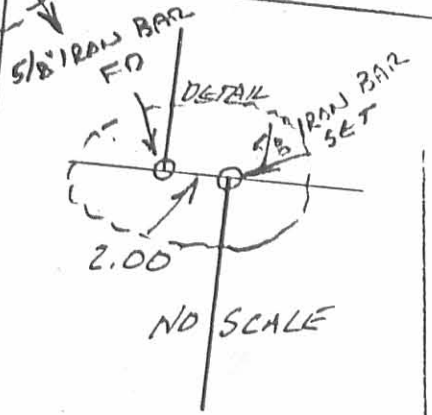
VINCENT PETNO
17.24 ACRES
D.B. VOL. 404
PAGE 576

GLENWOOD EAST ALLOT. #1
(WESTERMAN #6)
450.00'

DONALD ROPP
126.776 AC.
D.B. VOL. 404
PAGE 257

S. 83° 47' 01" E. 462.43

SEE DETAIL



SCALE: 1" = 100'



LEGEND:

- ⊙ = 3/4" PIPE FO.
- ⊙ = 1" PIPE FO.
- = 5/8" IRON BAR FO.
- = 8" WOOD POST FO.
- = 5/8" IRON BAR SET.

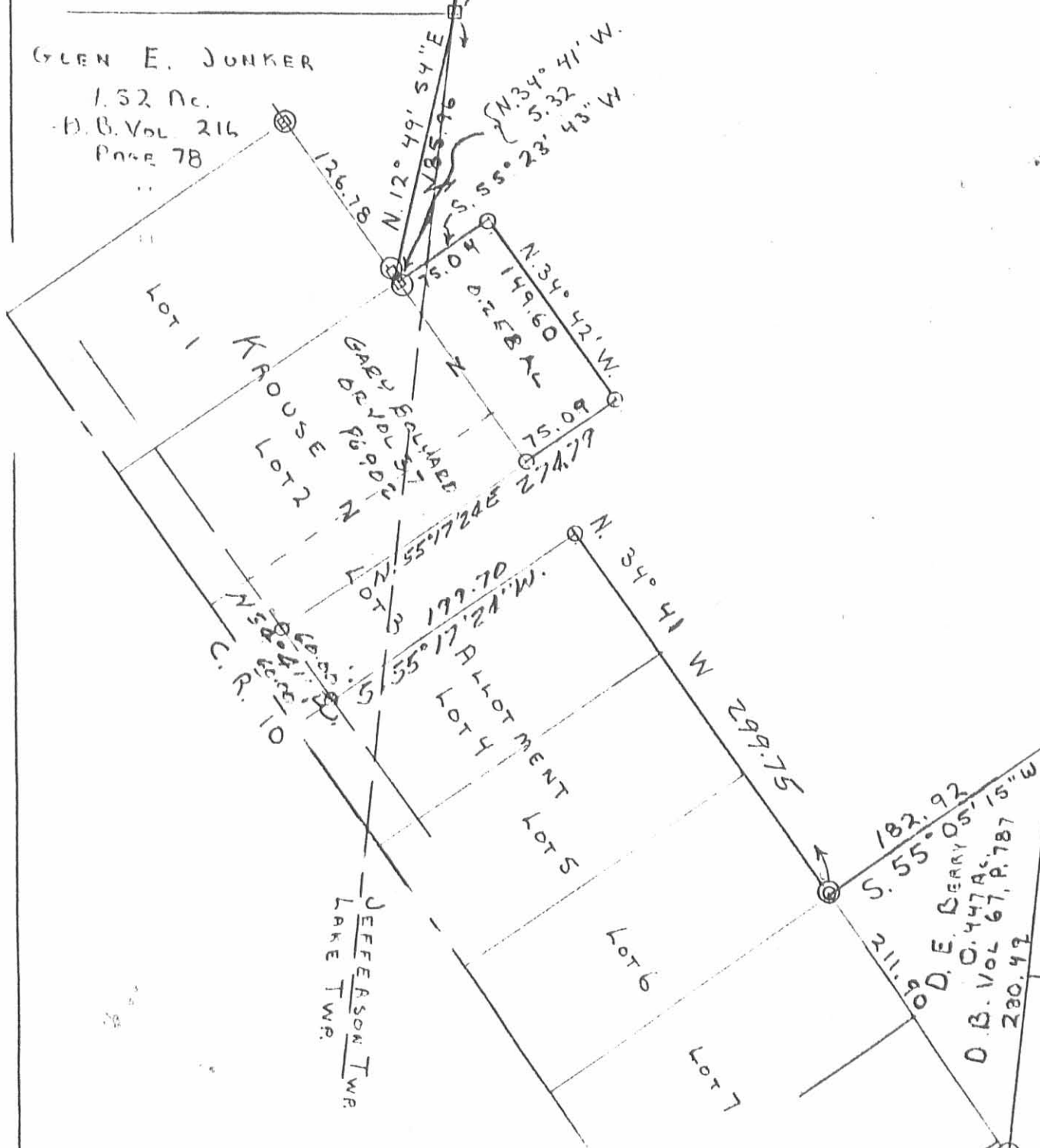
VINCENT PETNO
12.00 AC.
O.R. VOL. 22, PAGE 329

LYLE S. KROUSE
13.046 ACRES
D.B. VOL. 197, PAGE 110
0.1078 AC. IN LAKE TWP.
12.6632 AC. IN JEFFERSON TWP.
0.275 AC. IN LOT 3

DEWEY R. NICHOLS
60.27 AC.
D.B. VOL. 404,
PAGE 103-104

SURVEY OF A 13.046 AC.
TRACT IN V.M.S. 4478,
LAKE AND JEFFERSON TWP.,
LOGAN CO., OHIO.
FOR LYLE S. KROUSE
SEPTEMBER, 1988

GLEN E. JUNKER
1.52 AC.
D.B. VOL. 216
PAGE 78



Leslie H. Geeslin
LESLIE H. GEESLIN
RUSHSVLVANIA, OHIO

INDEXED ON MAP
7839 3P

Basis of bearings