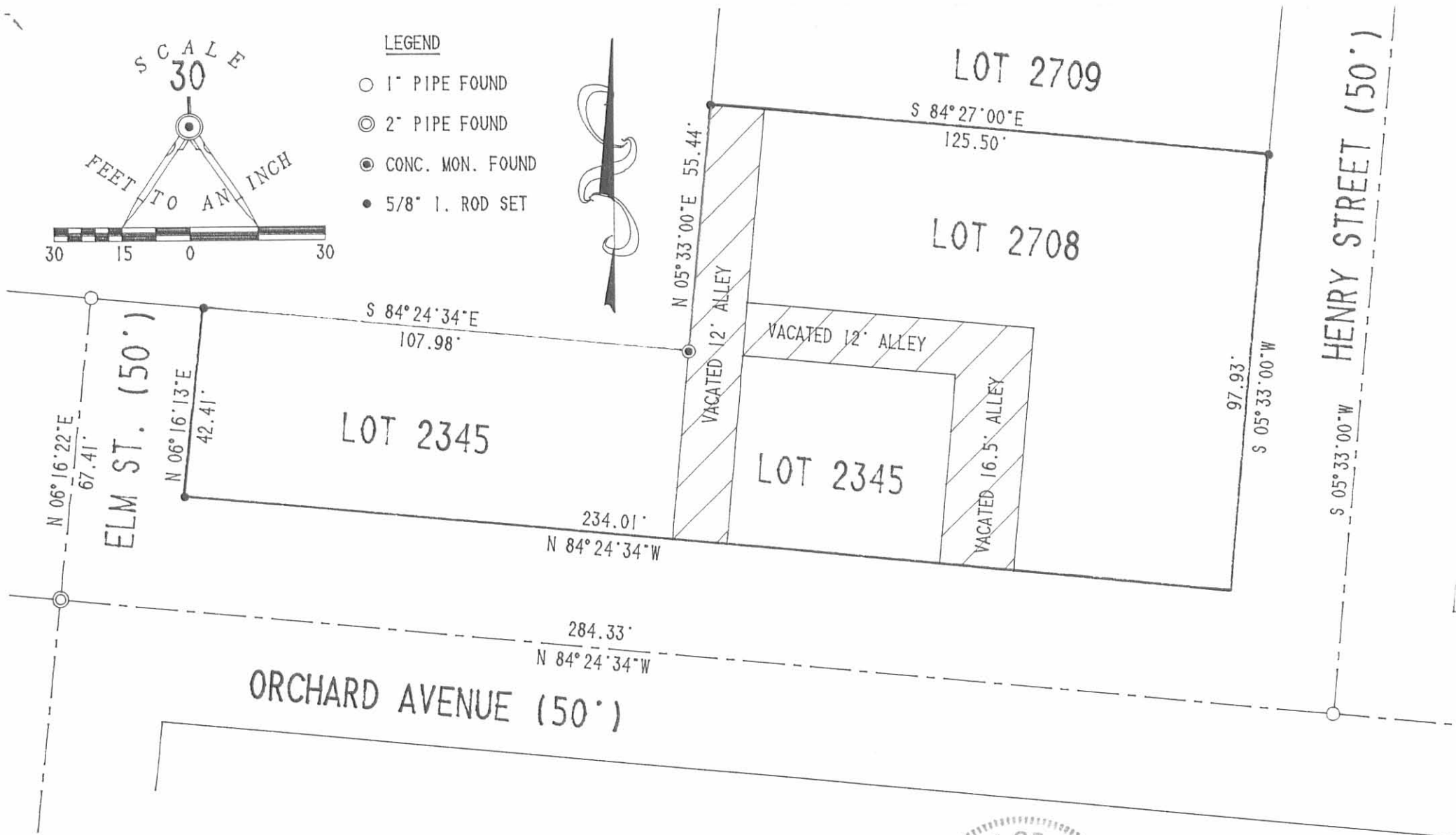


LEGEND

- 1" PIPE FOUND
- ⊙ 2" PIPE FOUND
- CONC. MON. FOUND
- 5/8" I. ROD SET



PARTIAL RETRACEMENT SURVEY OF  
 LOTS 2345 AND 2708 FOR  
 NATIONAL EXTRUSION & MANUFACTURING CO.  
 CITY OF BELLEFONTAINE  
 LOGAN COUNTY, OHIO

INDEXED ON MAP  
 8670 1P



SURVEYED BY:  
*Jeffrey I. Lee*  
 JEFFREY I. LEE  
 PROFESSIONAL SURVEYOR 6359  
 FEBRUARY 27, 1992

ORIGINAL STAMP IN GREEN

**LEE SURVEYING & MAPPING CO.**  
 143 East Columbus Avenue  
 BELLEFONTAINE, OHIO 43311  
 (513) 593-7335  
 DISK 64 NATEXTRU L 1426-5