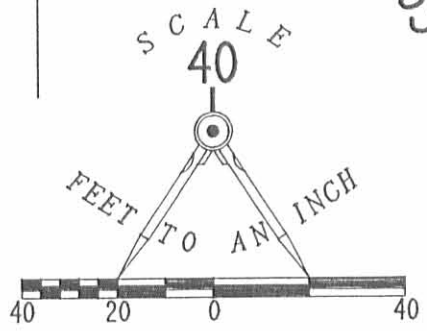
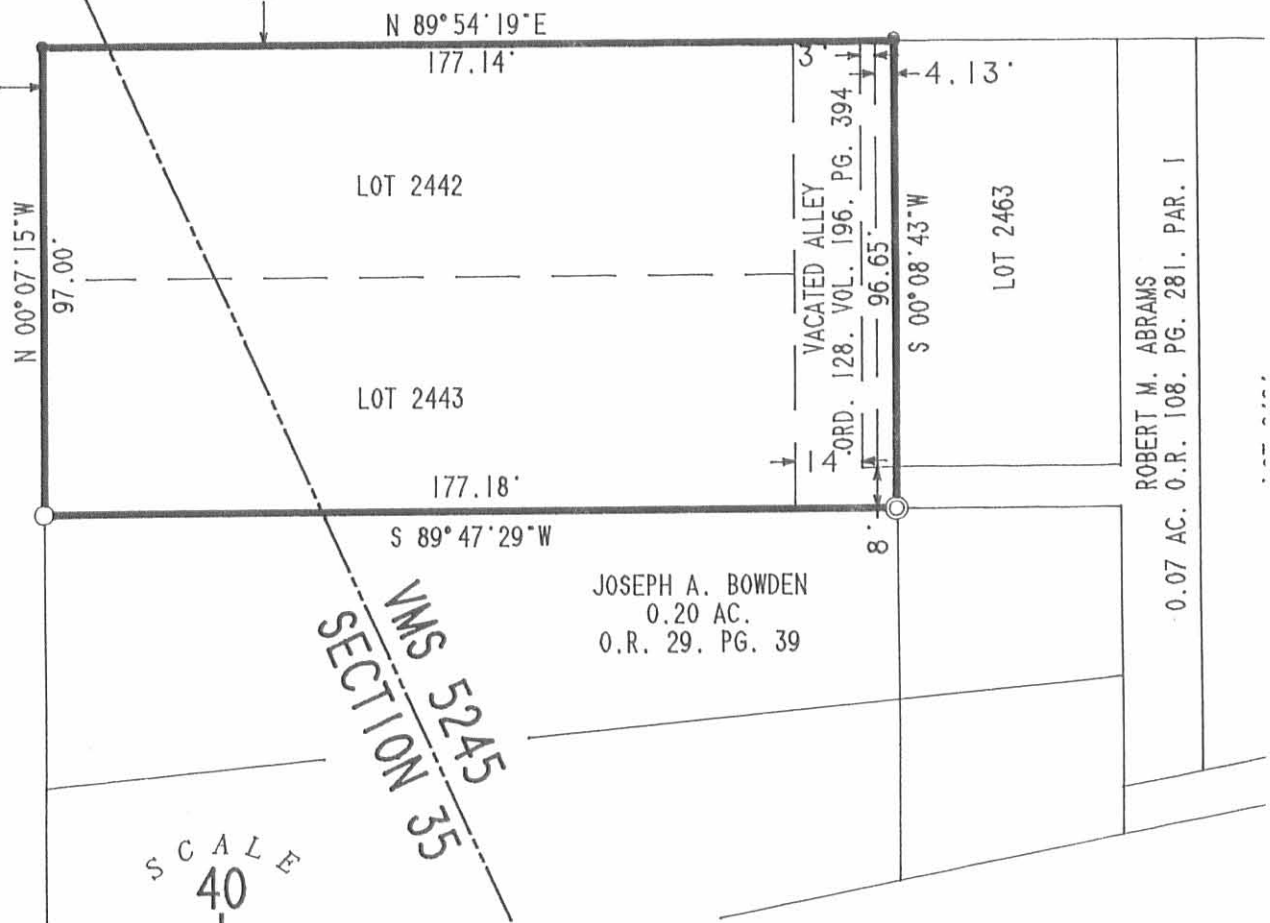


MADRIVER STREET (60')

PALMER AVENUE (60')



LEGEND

- ⊘ PK NAIL FOUND
- ⊙ 1" PIPE FOUND
- 3/4" IRON ROD FOUND
- 1/2" IRON ROD FOUND
- 5/8" IRON ROD SET

RETRACEMENT SURVEY OF  
 PART LOT 2463. LOTS 2442. 2443.  
 AND TWO VACATED ALLEYS  
 IN THE NAME OF MALCOLM ARCHIE STOKES  
 OFFICIAL RECORD 49. PAGE 906  
 IRWIN PLACE ADDITION  
 SECTION 35. TOWN 4. RANGE 13  
 MIAMI RIVERS SURVEY AND  
 VIRGINIA MILITARY SURVEY 5245  
 CITY OF BELLEFONTAINE  
 LAKE TOWNSHIP  
 LOGAN COUNTY, OHIO

INDEXED ON MAP  
8793 1P

BY:

*Jeffrey I. Lee*  
 JEFFREY I. LEE  
 PROFESSIONAL SURVEYOR 6359  
 APRIL 14, 1993



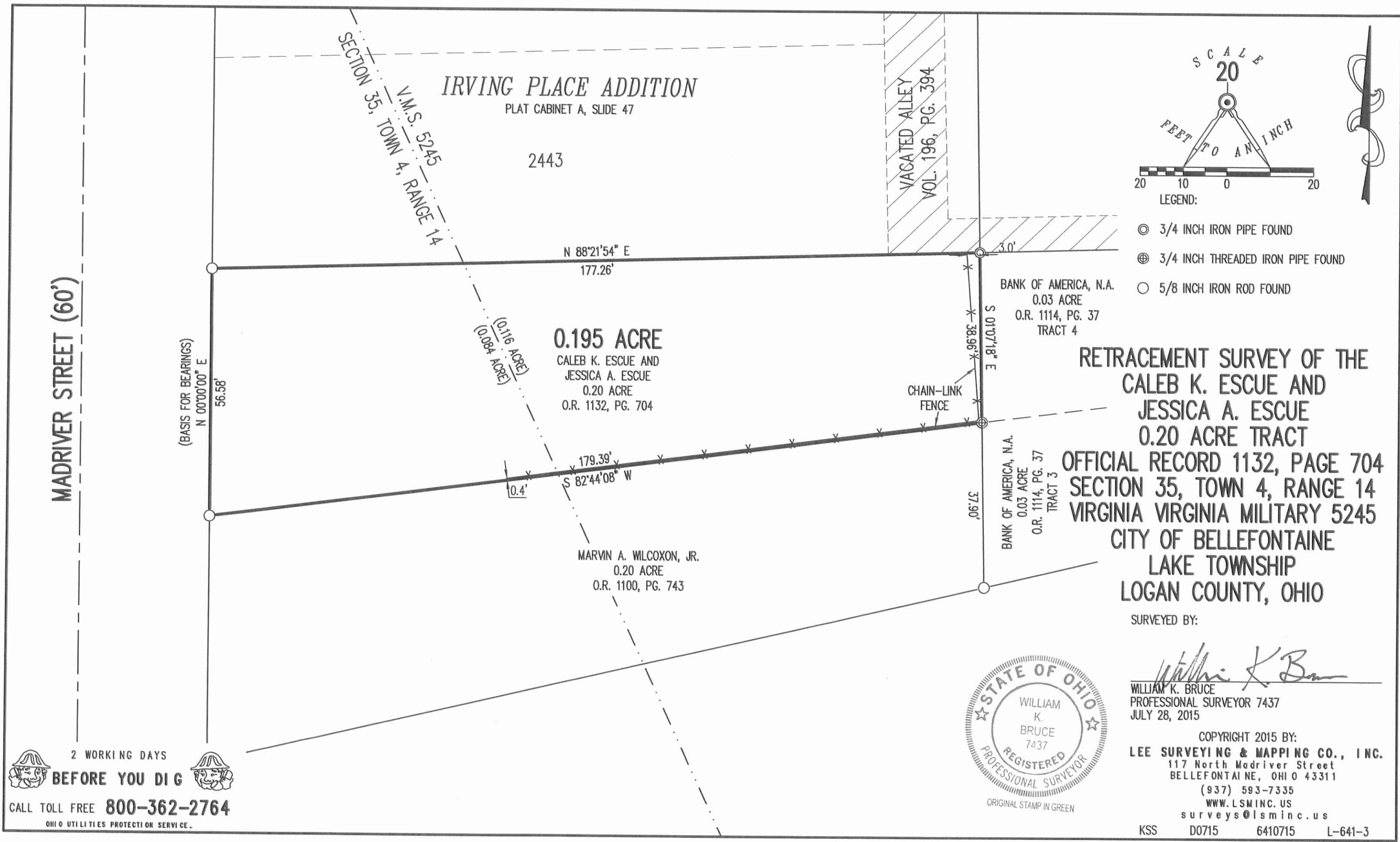
LEE SURVEYING & MAPPING CO.  
 143 East Columbus Avenue  
 BELLEFONTAINE, OHIO 43311  
 (513) 593-7335

2 WORKING DAYS  
 BEFORE YOU DIG  
 CALL TOLL FREE 800-362-2764  
 OHIO UTILITIES PROTECTION SERVICE.

ORIGINAL STAMP IN GREEN

D214 STOKES

L 641-4



2 WORKING DAYS  
**BEFORE YOU DIG**  
CALL TOLL FREE **800-362-2764**  
OHIO UTILITIES PROTECTION SERVICE



*William K. Bruce*  
WILLIAM K. BRUCE  
PROFESSIONAL SURVEYOR 7437  
JULY 28, 2015

COPYRIGHT 2015 BY:  
**LEE SURVEYING & MAPPING CO., INC.**  
117 North Madriver Street  
BELLEFONTAINE, OHIO 43311  
(937) 593-7335  
WWW.LSMINC.US  
surveys@lsminc.us  
KSS D0715 6410715 L-641-3

INDEXED ON MAP  
8793 2P