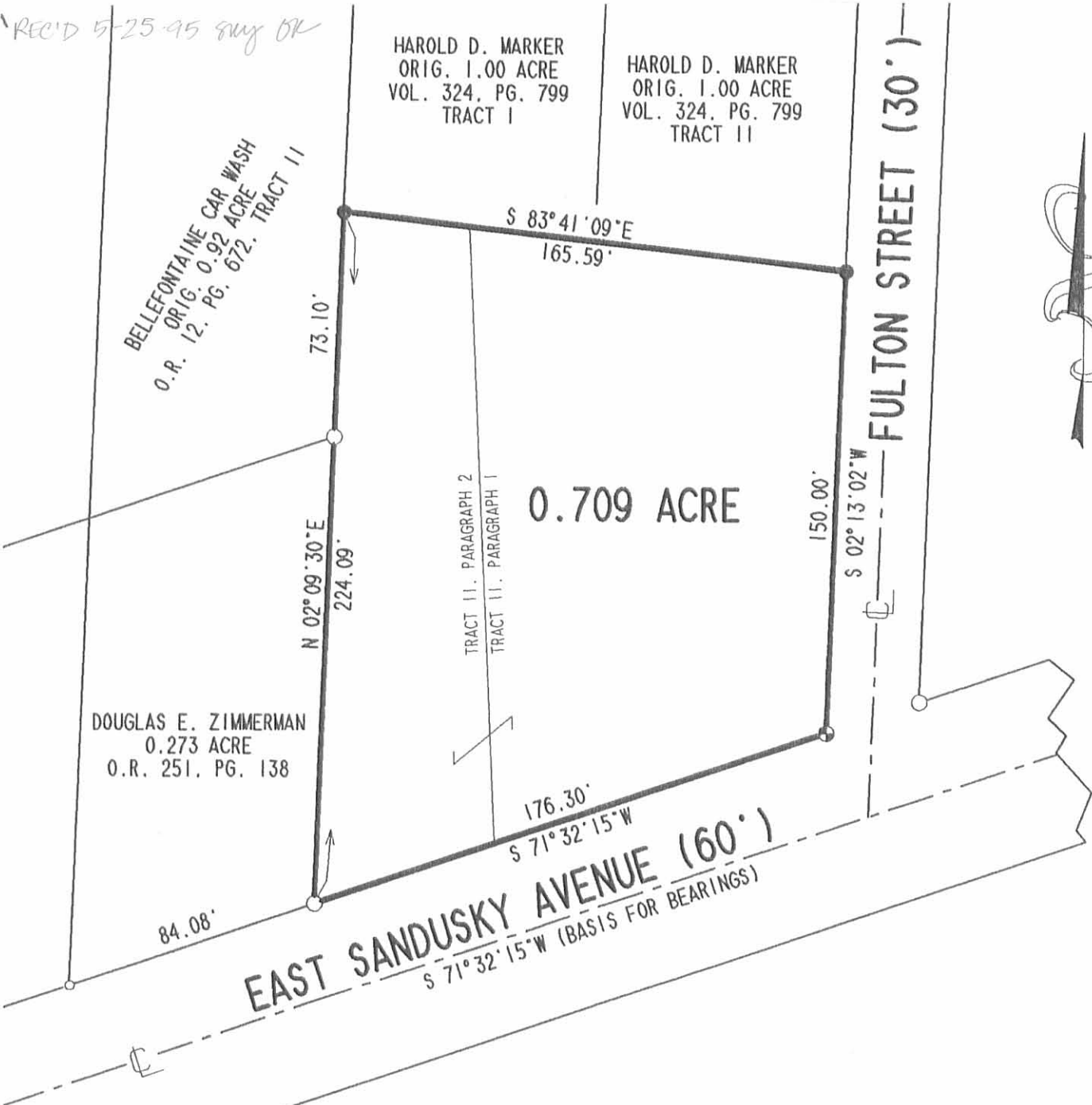


REC'D 5-25-95 gwy BK

HAROLD D. MARKER  
ORIG. 1.00 ACRE  
VOL. 324, PG. 799  
TRACT I

HAROLD D. MARKER  
ORIG. 1.00 ACRE  
VOL. 324, PG. 799  
TRACT II

BELLEFONTAINE CAR WASH  
ORIG. 0.92 ACRE  
O.R. 12, PG. 672, TRACT II



0.709 ACRE

DOUGLAS E. ZIMMERMAN  
0.273 ACRE  
O.R. 251, PG. 138

EAST SANDUSKY AVENUE (60')  
S 71° 32' 15\" W (BASIS FOR BEARINGS)

FULTON STREET (30')

SCALE  
50

FEET TO AN INCH



LEGEND

- 5/8" IRON ROD SET W/ PLASTIC I.D. CAP STAMPED "LEE PS6359"
- 5/8" IRON ROD FOUND
- 1/2" IRON ROD FOUND
- ⊕ RAILROAD SPIKE SET

REFERENCES

LOGAN COUNTY ENGINEER'S MAP ROOM,  
DRAWER "R", FILE NUMBERS 2530,  
2703, 3757 AND 7850.

INDEXED ON MAP  
9012 1P

2 WORKING DAYS



BEFORE YOU DIG



CALL TOLL FREE 800-362-2764

OHIO UTILITIES PROTECTION SERVICE.

RETRACEMENT SURVEY OF THE  
JAMES N. BOWSHER 0.709 ACRE TRACT.  
OFFICIAL RECORD 244, PG. 204  
VIRGINIA MILITARY SURVEY 4990  
CITY OF BELLEFONTAINE  
LAKE TOWNSHIP  
LOGAN COUNTY, OHIO



ORIGINAL STAMP IN GREEN

SURVEYED BY:

*Jeffrey I. Lee*  
JEFFREY I. LEE  
PROFESSIONAL SURVEYOR 6359  
MAY 9, 1995

COPYRIGHT 1995 BY:

LEE SURVEYING & MAPPING CO.  
143 East Columbus Avenue  
BELLEFONTAINE, OHIO 43311  
(513) 593-7335

D 258 BOWSHER

L-1337-4