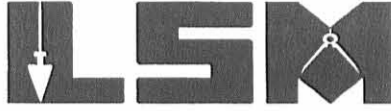


Received 6/19/20 02-07-23

Lee Surveying and Mapping Co., Inc.

Land Surveys • Topography • Subdivisions • Construction Layout

117 N. Madriver St.
Bellefontaine OH 43311



Phone: (937) 593-7335
Fax: (937) 593-7444

1975-2005 - 30 YEARS OF EXCELLENCE

**MARKER
146.753 ACRES**

Lying in Virginia Military Surveys 4399, 2873, 3683, 3317 and 3442, City of Bellefontaine, Lake and Jefferson Townships, Logan County, Ohio.

Being all of the Randall K. Marker, Gail A. Morrissey and Patrick K. Ellis and Harold D. Marker and Barbara F. Marker, Trustees of the Harold D. Marker Revocable Trust Agreement dated the 6th day of October, 2004, 5.48 acre tract, part of the original 45.39 acre tract and all of the original 106.733 acre tract as deeded and described in Official Record 97, Pages 262, 269, 276 and 283 and Official Record 799, Page 80, Tracts I, II, and III of the Logan County Records of Deeds and being more particularly described as follows:

Beginning at a 1/2 inch square iron bar found at the southeast corner of Lot 7 of Woodland Subdivision (Plat Cabinet A, Slide 339).

THENCE, with the east line of Woodland Subdivision and said line extended and the corporation line of Bellefontaine, N 0°-48'-10"W, a distance of 596.70 feet to a MAG nail set on the former center-line of Ohio Route 47, passing a 5/8 inch iron rod set at 506.50 feet.

THENCE, with the former center-line of Ohio Route 47 (variable widths), within the right-of-way of Ohio Route 47 and the corporation line of Bellefontaine, the following three courses:

N 83°-52'-58"E, a distance of 370.72 feet to a railroad spike found.

N 72°-22'-35"E, a distance of 1232.91 feet to a MAG nail found.

With a curve to the left, having a central angle of 10°-20'-55", a radius of 381.97 feet, an arc length of 68.99 feet, a chord bearing N 67°-11'-22"E, a distance of 68.90 feet to a MAG nail set.

THENCE, with the corporation line of Bellefontaine and the west line extended and the west line of the Harold D. Marker and Barbara F. Marker, Trustees of the Harold D. Marker Revocable Trust Agreement, dated the 6th day of October, 2004, 93.204 acre tract (O.R. 799, Pg. 89), S 6°-14'-12"E, a distance of 1287.88 feet to a 1 inch iron pipe found, passing a 5/8 inch iron rod set on the south right-of-way of Ohio Route 47 at 101.84 feet.

THENCE, with the west line of the Patrick K. Ellis, Trustee, etal, 12.323 acre tract (O.R. 769, Pg. 172), S 5°-39'-51"E, a distance of 2684.53 feet to a 1/2 inch iron rod found on the center-line of Township Road 183, passing a concrete right-of-way monument found at 2644.48 feet.

THENCE, with the centerline of Township Road 183 (variable widths), S 84°-45'-25"W, a distance of 61.10 feet to a railroad spike found.

THENCE, with the east line of The Church of Jesus Christ of Latter-Day Saints 0.362 acre tract (Vol. 404, Pg. 893, Tract II), N 5°-24'-50"W, a distance of 515.83 feet to a 5/8 inch iron rod found, passing a 5/8 inch iron rod set at 52.50 feet.

THENCE, with the northeasterly lines of the said 0.362 acre tract and The Church of Jesus Christ of Latter-Day Saints 5.000 acre tract (Vol. 404, Pg. 893, Tract I), N 60°-23'-10"W, a distance of 291.29 feet to a 5/8 inch iron rod found.

THENCE, with the northwesterly line of the said 5.000 acre tract, S 44°-25'-17"W, a distance of 523.95 feet to a 5/8 inch iron rod found on the north right-of-way of U.S. Route 33.

THENCE, with the corporation line of Bellefontaine and the north right-of-way of U.S. Route 33 (variable widths) and the north line of the State of Ohio 24.20 acre tract (Vol. 306, Pg. 237), the following seven courses:

N 59°-50'-34"W, a distance of 289.71 feet to a 5/8 inch iron rod set.

N 44°-56'-28"W, a distance of 382.69 feet to a 5/8 inch iron rod set.

N 44°-06'-26"W, a distance of 171.22 feet to a 5/8 inch iron rod set.

N 53°-43'-54"W, a distance of 306.67 feet to a 5/8 inch iron rod set.

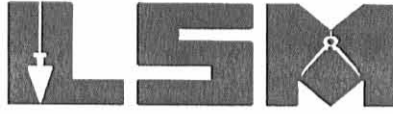
N 47°-24'-20"W, a distance of 408.00 feet to a 5/8 inch iron rod set.



Lee Surveying and Mapping Co., Inc.

Land Surveys • Topography • Subdivisions • Construction Layout

117 N. Madriver St.
Bellefontaine OH 43311



Phone: (937) 593-7335
Fax: (937) 593-7444

1975-2005 - 30 YEARS OF EXCELLENCE

N 64°-22'-55"W, a distance of 206.38 feet to a MAG nail set in the base of a concrete post found.

With a curve to the left, having a central angle of 9°-58'-45", a radius of 5809.58 feet, an arc length of 1011.86 feet, a chord bearing N 60°-36'-33"W, a distance of 1010.58 feet to a 8 inch oak tree found.

THENCE, with the lines of the Premier Properties original 11.545 acre tract (O.R. 116, Pg. 974, Parcel III, Tract I) and the corporation line of Bellefontaine, the following four courses:

N 0°-37'-33"W, a distance of 589.62 feet to a 1-1/2 inch iron pipe found, passing a 5/8 inch iron rod set at 4.00 feet.

S 79°-21'-16"E, a distance of 288.39 feet to a 1/2 inch square iron bar found.

N 6°-03'-03"W, a distance of 234.55 feet to a 1/2 inch square iron bar found.

N 5°-58'-08"W, a distance of 30.00 feet to a 5/8 inch iron rod set at the southeast corner of Lot 11 of Woodland Subdivision.

THENCE, with the south line of the Donald J. Hilliker 0.20 acre tract (Vol. 402, Pg. 294, Tract II) and the corporation line of Bellefontaine, N 83°-27'-14"E, a distance of 50.00 feet to a 1/2 inch square iron bar found.

THENCE, with the lines of the Harold D. Marker and Barbara F. Marker, Trustees 1.80 acre tract (O.R. 769, Pg. 150, Tract I) and the corporation line of Bellefontaine, the following two courses:

S 5°-58'-08"E, a distance of 31.95 feet to a 5/8 inch iron rod set.

N 86°-37'-58"E, a distance of 360.54 feet to a 5/8 inch iron rod set.

THENCE, with the said 1.80 acre tract, N 6°-03'-50"W, a distance of 226.60 feet to a 1/2 inch square iron bar found at southwest corner of Lot 8 of Woodland Subdivision.

THENCE, with the south line of Lot 8 of Woodland Subdivision, also being the south line of the Harold D. Marker and Barbara F. Marker, Trustees 0.4132 acre tract (O.R. 799, Pg. 80, Tract IV), N 83°59'-36"E, a distance of 90.07 feet to a 1 inch iron bar found.

THENCE, with the west line of the Delores J. Boy 0.49 acre tract (O.R. 618, Pg. 49, Tract II), S 6°-03'-50"E, a distance of 232.08 feet to a 5/8 inch iron rod found.

THENCE, with the south lines of the said 0.49 acre tract and the Delores J. Boy 0.85 acre tract (O.R. 618, Pg. 49, Tract I) and the corporation line of Bellefontaine, N 87°-38'-15"E, a distance of 232.91 feet to a 1 inch iron bar found.

THENCE, with the east line of the said 0.85 acre tract and the corporation line of Bellefontaine, N 1°-07'-59"W, a distance of 247.73 feet to the point of beginning.

Containing 146.753 acres, of which 3.996 acres are within the highway rights-of-way. There are 5.208 acres in Virginia Military Survey 4399, there are 43.251 acres in Virginia Military Survey 2873, of which 0.474 acre lie within Lake Township and 42.777 acres lie within the corporation of Bellefontaine, there are 79.997 acres in Virginia Military Survey 3683, of which 0.016 acre is within Jefferson Township, there are 15.959 acres in Virginia Military Survey 3317 and there are 2.338 acres in Virginia Military Survey 3442.

The basis for bearings is the present center-line of Ohio Route 47 at the Lake Township and Jefferson Township Line, being N 69°-39'-08"E, and all other bearings are from angles and distances measured in a field survey by Lee Surveying and Mapping Co., Inc. on May 8, 2006.

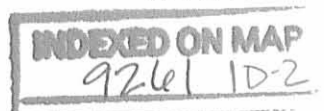


ORIGINAL STAMP IN GREEN

Description prepared by:

A handwritten signature in black ink, appearing to read 'Jeffrey I. Lee'.
Jeffrey I. Lee
Professional Surveyor 6359
May 8, 2006

1554046



PAID 6/9/06 OK GPM

Lee Surveying and Mapping Co., Inc.

Land Surveys • Topography • Subdivisions • Construction Layout

117 N. Madriver St.
Bellefontaine OH 43311



Phone: (937) 593-7335
Fax: (937) 593-7444

1975-2005 - 30 YEARS OF EXCELLENCE

**MARKER
0.308 ACRE**

Lying in Virginia Military Survey 2873, City of Bellefontaine, Lake Township, Logan County, Ohio.

Being out of the Randall K. Marker, Gail A. Morrissey and Patrick K. Ellis and Harold D. Marker and Barbara F. Marker, Trustees of the Harold D. Marker Revocable Trust Agreement dated the 6th day of October, 2004, original 45.39 acre tract as deeded and described in Official Record 97, Pages 262, 269, 276 and 283 and Official Record 799, Page 80, Tract II of the Logan County Records of Deeds and being more particularly described as follows:

Beginning at a 5/8 inch iron rod set on the south line of Virginia Military Survey 2873 and the north line of Virginia Military Survey 5245 at the intersection with the south right-of-way of U.S. Route 33.

THENCE, with the north lines of the Shadowbrooke Subdivision Phase I (Plat Cabinet B, Slide 16A), the Blue Jacket Estates Phase II (Plat Cabinet A, Slide 701) and the corporation line of Bellefontaine, N 87°-37'-45"W, a distance of 236.68 feet to a 1 inch iron bar found.

THENCE, with the east line of the City of Bellefontaine, Ohio 4.33 acre tract (Vol. 310, Pg. 32) and the corporation line of Bellefontaine, N 0°-37'-33"W, a distance of 110.96 feet to a 1 inch iron bar found on the south right-of-way of U.S. Route 33.

THENCE, with the south right-of-way of U.S. Route 33 (variable widths) and the south line of State of Ohio 24.20 acre tract (Vol. 306, Pg. 237), with a curve to the right, having a central angle of 2°-44'-34", a radius of 5569.58 feet, an arc distance of 266.62 feet, a chord bearing S 63°-04'-09"E, a distance of 266.60 feet to the point of beginning.

Containing 0.308 acre.

The basis for bearings is the present center-line of Ohio Route 47 at the Lake Township and Jefferson Township Line, being N 69°-39'-08"E, and all other bearings are from angles and distances measured in a field survey by Lee Surveying and Mapping Co., Inc. on May 8, 2006.



ORIGINAL STAMP IN GREEN

Description prepared by:

A handwritten signature in black ink, appearing to read 'Jeffrey I. Lee', written over a light background.

Jeffrey I. Lee
Professional Surveyor 6359
May 8, 2006

1554046



Factured 6/9/06 0x922

Lee Surveying and Mapping Co., Inc.

Land Surveys • Topography • Subdivisions • Construction Layout

117 N. Madriver St.
Bellefontaine OH 43311



Phone: (937) 593-7335
Fax: (937) 593-7444

1975-2005 - 30 YEARS OF EXCELLENCE

**MARKER
91.803 ACRES**

Lying in Virginia Military Surveys 3683 and 3442, City of Bellefontaine, Lake and Jefferson Townships, Logan County, Ohio.

Being all of the Harold D. Marker and Barbara F. Marker, Trustees of the Harold D. Marker Revocable Trust Agreement, dated the 6th day of October, 2004, original 93.204 acre tract as deeded and described in Official Record 799, Page 89 of the Logan County Records of Deeds and being more particularly described as follows:

Commencing at a 1/2 inch square iron bar found at the southeast corner of Lot 7 of Woodland Subdivision (Plat Cabinet A, Slide 339).

THENCE, with the east line of Woodland Subdivision and said line extended, the corporation line of Bellefontaine and the west line of the remainder of Harold D. Marker, trustee, etal, original 45.39 acre tract (O.R. 97, Pgs. 262, 269, 276 and 283, Tract II and O.R. 799, Pg. 80, Tract II), N 0°-48'-10"W, a distance of 596.70 feet to a MAG nail set on the former center-line of Ohio Route 47, passing a 5/8 inch iron rod set at 506.50 feet.

THENCE, with the former center-line of Ohio Route 47 (variable widths), within the right-of-way of Ohio Route 47, the corporation line of Bellefontaine, and the north lines of the said original 45.39 acre tract and the Harold D. Marker, trustee, etal, original 106.733 acre tract (O.R. 97, Pgs. 262, 269, 276 and 283, Tract III and O.R. 799, Pg. 80, Tract III), the following three courses:

N 83°-52'-58"E, a distance of 370.72 feet to a railroad spike found.

N 72°-22'-35"E, a distance of 1232.91 feet to a MAG nail found.

With a curve to the left, having a central angle of 10°-20'-55", a radius of 381.97 feet, an arc length of 68.99 feet, a chord bearing N 67°-11'-22"E, a distance of 68.90 feet to a MAG nail set.

THENCE, with the corporation line of Bellefontaine and the east line of the said original 106.733 acre tract, S 6°-14'-12"E, a distance of 101.84 feet to a 5/8 inch iron rod set on the south right-of-way of Ohio Route 47 at the TRUE POINT OF BEGINNING.

THENCE, with the corporation line of Bellefontaine and the south right-of-way of Ohio Route 47, with a curve to the left, having a central angle of 0°-23'-09", a radius of 5819.58 feet, an arc length of 39.18 feet, a chord bearing N 66°-42'-12"E, a distance of 39.18 feet to a 5/8 inch iron rod set.

THENCE, with the corporation line of Bellefontaine and the west line of the remainder of the Ralph D. Ray original 3.57 acre tract (Vol. 347, Pg. 655), S 6°-24'-16"E, a distance of 322.22 feet to a 5/8 inch iron rod set.

THENCE, with the corporation line of Bellefontaine and the south lines of the said remainder of the original 3.57 acre tract and the John Mamula 1.48 acre tract (O.R. 412, Pg. 492), N 68°-30'-45"E, a distance of 530.62 feet to a 5/8 inch iron rod set, passing a 1 inch iron bar found at 333.31 feet.

THENCE, with the corporation line of Bellefontaine and the east line of the said 1.48 acre tract, N 22°-13'-26"W, a distance of 322.96 feet to a 5/8 inch iron rod set on the south right-of-way of Ohio Route 47.

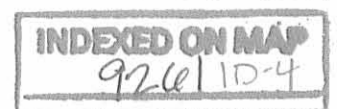
THENCE, with the corporation line of Bellefontaine and the south right-of-way of Ohio Route 47, the following four courses:

N 67°-50'-58"E, a distance of 293.74 feet to a 5/8 inch iron rod set.

N 65°-18'-38"E, a distance of 1100.05 feet to a 5/8 inch iron rod set.

N 62°-40'-55"E, a distance of 778.41 feet to a 5/8 inch iron rod set.

N 62°-40'-44"E, a distance of 145.87 feet to a 5/8 inch iron rod set.



Lee Surveying and Mapping Co., Inc.

Land Surveys • Topography • Subdivisions • Construction Layout

117 N. Madriver St.
Bellefontaine OH 43311



Phone: (937) 593-7335
Fax: (937) 593-7444

1975-2005 - 30 YEARS OF EXCELLENCE

THENCE, with the west line of the Harold D. Marker and Barbara F. Marker, Trustees, 60 acre tract (O.R. 769, Pg. 146), S 5°-32'-37"E, a distance of 1500.74 feet to a 5/8 inch iron rod set on the south line of Virginia Military Survey 3442 and the north line of Virginia Military Survey 3683.

THENCE, with the south line of Virginia Military Survey 3442 and the north line of Virginia Military Survey 3683, and the north line of the Harold D. Marker, trustee, etal, original 125.685 acre tract (O.R. 769, Pg. 162), S 84°-43'-29"W, a distance of 261.30 feet to a 5/8 inch iron rod found.

THENCE, with the west line of the said original 125.685 acre tract, S 4°-28'-33"E, a distance of 646.95 feet to a 5/8 inch iron rod set.

THENCE, with the north lines of The Whitney Partnership 20.0 acre tract (Vol. 394, Pg. 420, Tract VI), the Harold D. Marker and Barbara F. Marker, Trustees, etal, 57.683 acre tract (O.R. 769, Pg. 155), the Gail A. Morrissey, Trustee, etal 24.295 acre tract (O.R. 769, Pg. 176) and the Patrick K. Ellis, Trustee, etal 12.323 acre tract (O.R. 769, Pg. 172), S 85°-08'-10"W, a distance of 2351.15 feet to a 1 inch iron pipe found.

THENCE, with the east line of the aforesaid original 106.733 acre tract, N 6°-14'-12"W, a distance of 1186.04 feet to the point of beginning.

Containing 91.803 acres. There are 34.603 acres in Virginia Military Survey 3683 and 57.200 acres in Virginia Military Survey 3442. There are 13.443 acres in Lake Township and 78.360 acres in Jefferson Township.

The basis for bearings is the present center-line of Ohio Route 47 at the Lake Township and Jefferson Township Line, being N 69°-39'-08"E, and all other bearings are from angles and distances measured in a field survey by Lee Surveying and Mapping Co., Inc. on May 8, 2006.



ORIGINAL STAMP IN GREEN

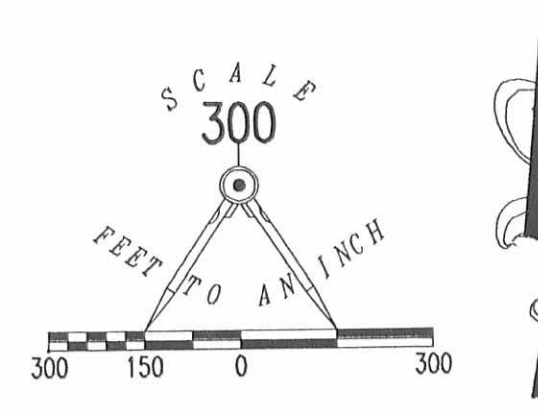
Description prepared by:

A handwritten signature in black ink, appearing to read 'Jeffrey I. Lee'.
Jeffrey I. Lee
Professional Surveyor 6359
May 8, 2006

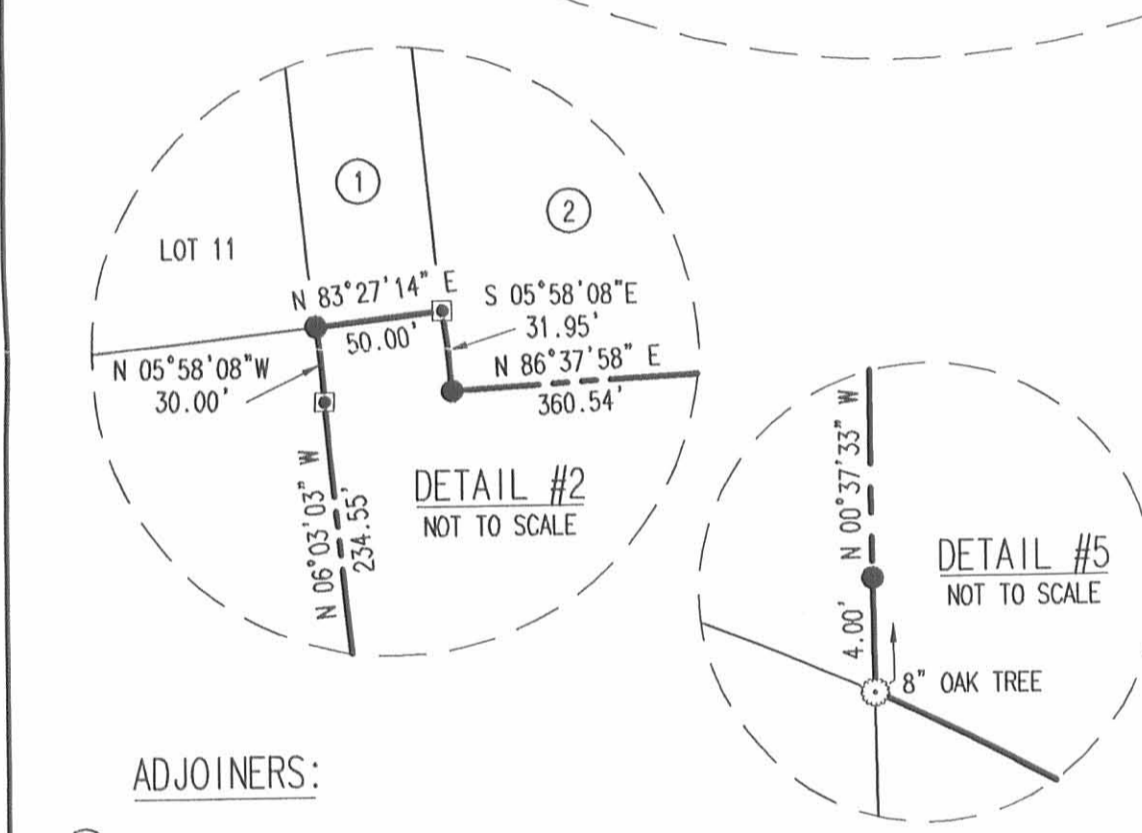
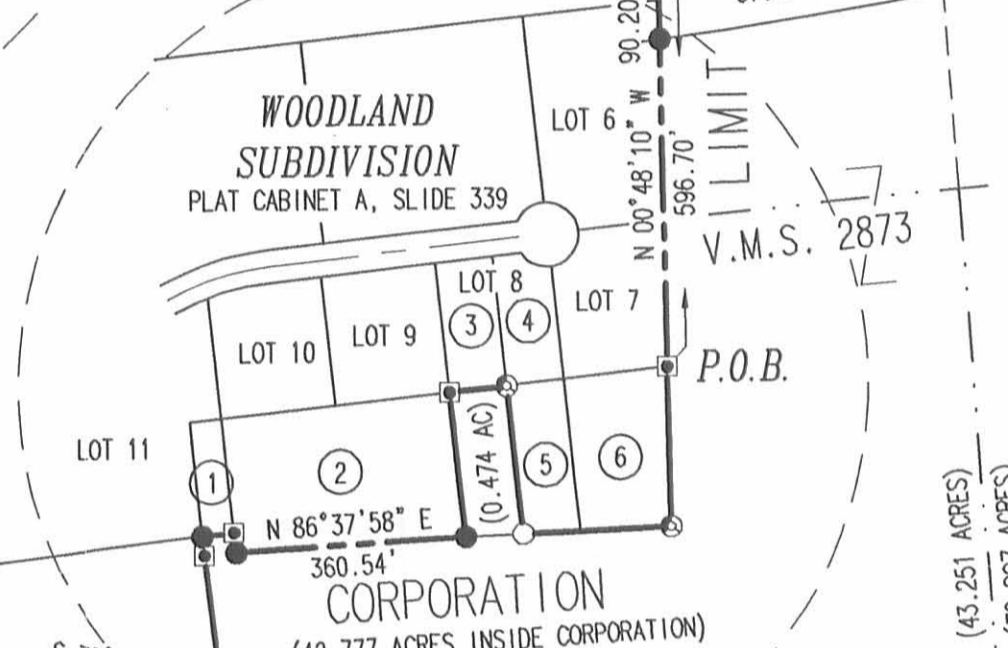
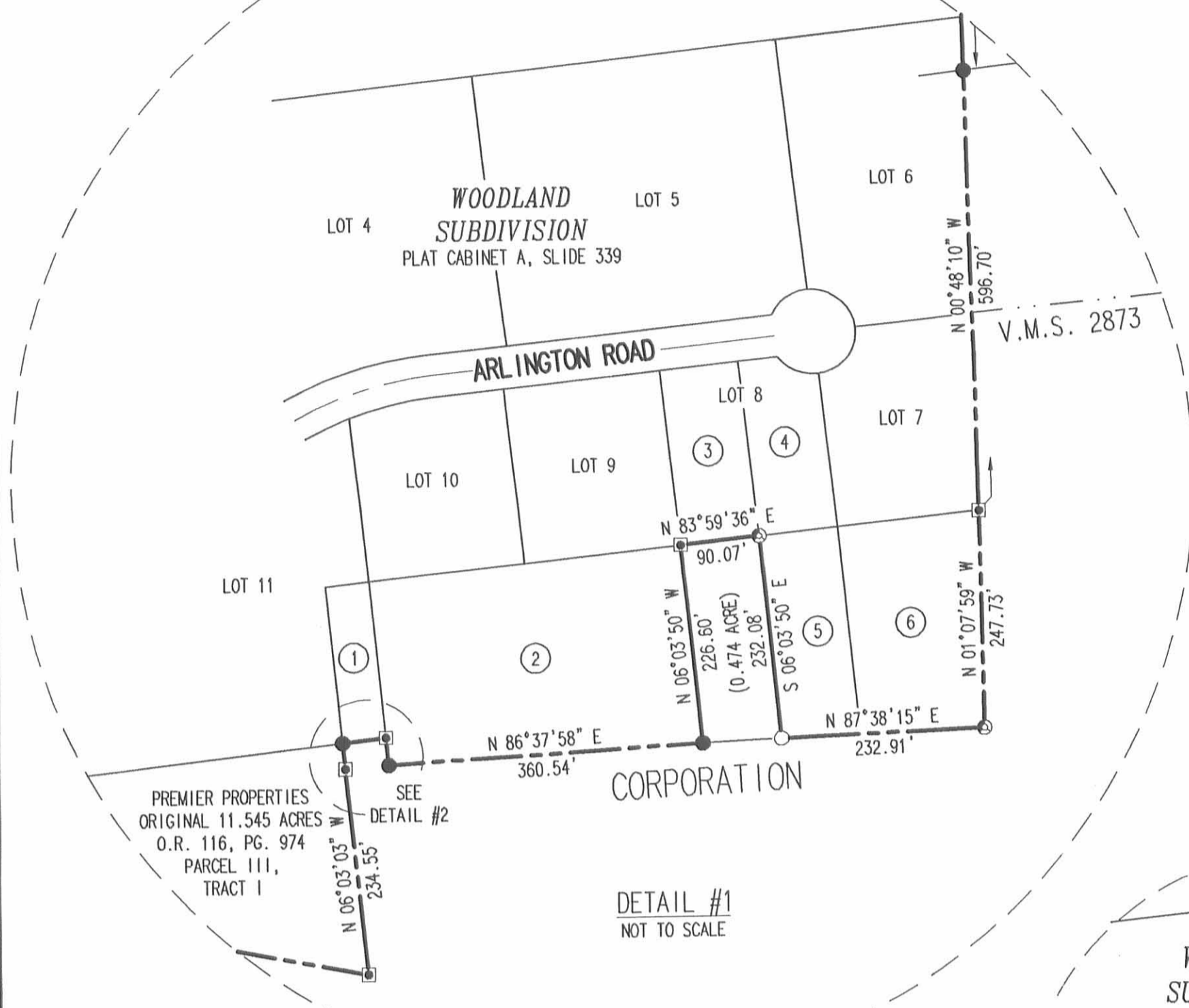
1554046



| CURVE | DELTA ANGLE | RADIUS | ARC LENGTH | CHORD BEARING | CHORD LENGTH |
|-------|-------------|----------|------------|---------------|--------------|
| C1 | 10°20'55" | 381.97' | 68.99' | N 67°11'22" E | 68.90' |
| C2 | 09°58'45" | 5809.58' | 1011.86' | N 60°36'33" W | 1010.58' |
| C3 | 02°44'34" | 5669.58' | 266.62' | S 63°04'09" E | 266.60' |
| C4 | 00°23'09" | 5819.58' | 39.18' | N 66°42'12" E | 39.18' |



- LEGEND:
- MAG NAIL SET
 - MAG NAIL FOUND
 - ⊗ RAILROAD SPIKE FOUND
 - 5/8 INCH IRON ROD SET
 - 5/8 INCH IRON ROD FOUND
 - ⊗ 1 INCH IRON PIPE FOUND
 - ⊗ 1 INCH IRON PIPE FOUND
 - ⊗ 1/2 INCH IRON ROD FOUND
 - ⊗ 1-1/2 INCH IRON PIPE FOUND
 - ⊗ 1/2 INCH SQUARE IRON BAR FOUND



- ADJOINERS:
- 1 DONALD J. HILL IKER
0.20 ACRE
VOL. 402, PG. 294
TRACT II
 - 2 HAROLD D. MARKER AND
BARBARA F. MARKER, TRUSTEES
1.80 ACRES
O.R. 769, PG. 150
TRACT I
 - 3 HAROLD D. MARKER AND
BARBARA F. MARKER, TRUSTEES
0.4132 ACRE
O.R. 799, PG. 80
TRACT IV
 - 4 DONALD S. MOSHOS
PART OF LOT 8
O.R. 29, PG. 985
 - 5 DELORES J. BOY
0.49 ACRE
O.R. 618, PG. 49, TRACT II
 - 6 DELORES J. BOY
0.85 ACRE
O.R. 618, PG. 49, TRACT I
 - 7 RALPH D. RAY
ORIGINAL 3.57 ACRES
VOL. 347, PG. 655
 - 8 JOHN MAMULA
1.48 ACRES
O.R. 412, PG. 492
 - 9 THE CHURCH OF JESUS CHRIST
OF LATTER-DAY SAINTS
0.362 ACRE
VOL. 404, PG. 893, TRACT II
 - 10 THE CHURCH OF JESUS CHRIST
OF LATTER-DAY SAINTS
5.000 ACRES
VOL. 404, PG. 893, TRACT I

REFERENCES:
LOGAN COUNTY ENGINEER'S FILES L-54
LOG-47-15.26
STATE OF OHIO DEPARTMENT OF TRANSPORTATION
RIGHT-OF-WAY PLANS LOG-33-14.18
SHEETS 17, 18 & 19 OF 22

2 WORKING DAYS
BEFORE YOU DIG
CALL TOLL FREE 800-362-2764
OHIO UTILITIES PROTECTION SERVICE.

146.753 ACRES
OF WHICH THERE ARE 3.996 ACRES
WITHIN THE HIGHWAY RIGHTS-OF-WAY

91.803 ACRES
HAROLD D. MARKER AND
BARBARA F. MARKER,
TRUSTEES OF THE HAROLD D. MARKER
REVOCABLE TRUST AGREEMENT DATED
THE 6TH DAY OF OCTOBER, 2004
ORIGINAL 93.204 ACRES
O.R. 799, PG. 89

HAROLD D. MARKER AND
BARBARA F. MARKER, TRUSTEES
60 ACRES
O.R. 769, PG. 146

HAROLD D. MARKER, TRUSTEE ETAL
ORIGINAL 125.685 ACRES
O.R. 769, PG. 162

THE WHITNEY PARTNERSHIP
20.0 ACRES
VOL. 394, PG. 420,
TRACT VI

RANDALL K. MARKER,
GAIL A. MORRISSEY AND PATRICK K. ELLIS
O.R. 97, PG. 262 (ONE-FOURTH INTEREST)
O.R. 97, PG. 269 (ONE-FOURTH INTEREST)
O.R. 97, PG. 276 (ONE-FOURTH INTEREST)
O.R. 97, PG. 283 (ONE-FOURTH INTEREST)

UNDIVIDED ONE-FOURTH INTEREST
HAROLD D. MARKER AND
BARBARA F. MARKER,
TRUSTEES OF THE HAROLD D. MARKER
REVOCABLE TRUST AGREEMENT DATED
THE 6TH DAY OF OCTOBER, 2004
O.R. 799, PG. 80

HAROLD D. MARKER AND
BARBARA F. MARKER,
TRUSTEES ETAL
57.683 ACRES
O.R. 769, PG. 155

SURVEY OF TWO TRACTS OUT OF THE
HAROLD D. MARKER, RANDALL K. MARKER,
GAIL A. MORRISSEY AND PATRICK K. ELLIS
OFFICIAL RECORD 97, PAGE 262 (ONE-FOURTH INTEREST)
OFFICIAL RECORD 97, PAGE 269 (ONE-FOURTH INTEREST)
OFFICIAL RECORD 97, PAGE 276 (ONE-FOURTH INTEREST)
OFFICIAL RECORD 97, PAGE 283 (ONE-FOURTH INTEREST)
HAROLD D. MARKER AND
BARBARA F. MARKER,
TRUSTEES OF THE HAROLD D. MARKER
REVOCABLE TRUST AGREEMENT DATED
THE 6TH DAY OF OCTOBER, 2004
5.48 ACRE TRACT, ORIGINAL 45.39 ACRE TRACT
AND ORIGINAL 106.733 ACRE TRACT
OFFICIAL RECORD 799, PAGE 80
TRACTS I, II AND III
VIRGINIA MILITARY SURVEYS 4399,
2873, 3683, 3317 AND 3442
AND SURVEY OF THE
HAROLD D. MARKER AND
BARBARA F. MARKER,
TRUSTEES OF THE HAROLD D. MARKER
REVOCABLE TRUST AGREEMENT DATED
THE 6TH DAY OF OCTOBER, 2004
ORIGINAL 93.204 ACRE TRACT
OFFICIAL RECORD 799, PAGE 89
VIRGINIA MILITARY SURVEYS 3683 AND 3442
CITY OF BELLEFONTAINE
LAKE AND JEFFERSON TOWNSHIPS
LOGAN COUNTY, OHIO



SURVEYED BY:
JEFFREY L. LEE
PROFESSIONAL SURVEYOR 6359
MAY 8, 2006

COPYRIGHT 2006 BY:
LEE SURVEYING & MAPPING CO., INC.
117 North Madison Street
BELLEFONTAINE, OHIO 43311
(937) 593-7335
KSR D0506 1554046 L-1554-1

INDEXED ON MAP
4261 1P