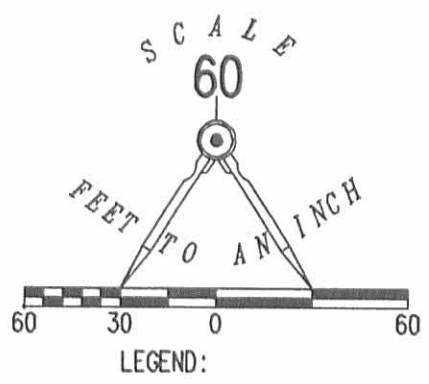


REC'D 4-18-06 8:40 AM

2 WORKING DAYS  
**BEFORE YOU DIG**  
CALL TOLL FREE **800-362-2764**  
OHIO UTILITIES PROTECTION SERVICE.



**COOPER AVENUE (40')**

**POWERS ADDITION NO. 3**  
PLAT CABINET A, SLIDE 27

VACATED ALLEY  
O.R. 743, PG. 622  
LOT 1733

**LUDLOW BRIDGE CONDOMINIUMS**  
PHASE IV (0.226 ACRE)  
PLAT CABINET B, SLIDE 101B

N 69°45'45" W  
8.29'

S 05°05'59" W  
168.18'

S 05°05'59" W  
18.59'

S 71°31'12" E  
5.14'

20' UTILITY EASEMENT #1

10' UTILITY EASEMENT #1

**SURVEY OF 10 FEET WIDE AND  
20 FEET WIDE UTILITY EASEMENTS  
THROUGH THE VILLAGE BUILDERS AND LENHART, INC.  
ORIGINAL 6.04 ACRE AND 8.05 ACRE TRACTS  
OFFICIAL RECORD 710, PAGE 550  
TRACT I AND TRACT II  
VIRGINIA MILITARY SURVEY 4990  
CITY OF BELLEFONTAINE  
LAKE TOWNSHIP  
LOGAN COUNTY, OHIO**

VILLAGE BUILDERS & LENHART, INC.  
1.00 ACRES  
O.R. 710, PG. 550  
TRACT II

VILLAGE BUILDERS & LENHART, INC.  
6.04 ACRES  
O.R. 710, PG. 550  
TRACT I

VILLAGE BUILDERS & LENHART, INC.  
8.05 ACRES  
O.R. 710, PG. 550  
TRACT III

**LUDLOW BRIDGE CONDOMINIUMS**  
PHASE II  
PLAT CABINET B, SLIDE 99A



ORIGINAL STAMP IN GREEN

MAP PREPARED BY:

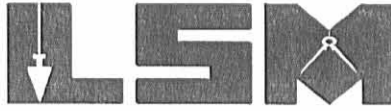
*Jeffrey I. Lee*  
JEFFREY I. LEE  
PROFESSIONAL SURVEYOR 6359  
APRIL 4, 2006

COPYRIGHT 2006 BY:  
**LEE SURVEYING & MAPPING CO., INC.**  
117 North Madriver Street  
BELLEFONTAINE, OHIO 43311  
(937) 593-7335

REC'D 8-31-04 SML/LL

# Lee Surveying and Mapping Co., Inc.

Land Surveys • Topography • Subdivisions • Construction Layout



117 N. Madriver St.  
Bellefontaine OH 43311

Phone: (937) 593-7335  
Fax: (937) 593-7444

## BRADY 0.868 ACRE

Lying in Virginia Military Survey 4990, City of Bellefontaine, Lake Township, Logan County, Ohio.

Being out of the Karen H. Brady 2.5 acre tract as deeded and described in Official Record 70, Page 177 of the Logan County Records of Deeds and being more particularly described as follows:

Beginning at a 1-1/4 inch iron pipe found on the west line of Virginia Military Survey 4990, on the intersection of center-lines of Spring Avenue (60 feet wide) and Ludlow Road (60 feet wide).

THENCE, with the center-line extended of Spring Avenue, N 75°-45'-00"E, a distance of 30.00 feet to a point on the east right-of-way of Ludlow Road.

THENCE, with the east right-of-way of Ludlow Road, N 14°-15'-00"W, a distance of 70.46 feet to a 5/8 inch iron rod found.

THENCE, with the north line of the Village Builders & Lenhart, Inc. 6.04 acre tract (O.R. 710, Pg. 550, Tract I), S 84°-14'-59"E, a distance of 457.90 feet to a 5/8 inch iron rod set on the east bank of a creek at the TRUE POINT OF BEGINNING.

THENCE, with the east bank of the creek, the following two courses:

N 5°31'-53"E, a distance of 165.75 feet to a 5/8 inch iron rod set.

N 56°-37'-52"E, a distance of 32.36 feet to a 5/8 inch iron rod set.

THENCE, with the south line of the Norman E. Cooper 2.280 acre tract (O.R. 585, Pg. 75), S 84°-14'-57"E, a distance of 145.95 feet to a 5/8 inch iron rod set.

THENCE, with the west line of the Village Builders & Lenhart, Inc. 8.05 acre tract (O.R. 710, Pg. 550, Tract III), S 14°-08'-56"E, a distance of 198.00 feet to a 5/8 inch iron rod found.

THENCE, with the north line of the aforesaid 6.04 acre tract, N 84°-14'-42"W, a distance of 237.82 feet to the point of beginning.

Containing 0.868 acre.

The basis for bearings is the center-line of Ludlow Road, being N 14°-15'-00"W, and all other bearings are from angles and distances measured in a field survey by Lee Surveying and Mapping Co., Inc. on August 24, 2004.

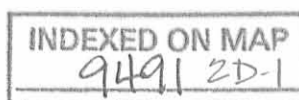


ORIGINAL STAMP IN GREEN

Description prepared by:

*Jeffrey I. Lee*  
Jeffrey I. Lee  
Professional Surveyor 6359  
August 25, 2004

L-715

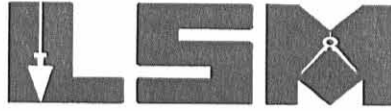


Deed 8-31-04 SLM OK

# Lee Surveying and Mapping Co., Inc.

Land Surveys • Topography • Subdivisions • Construction Layout

117 N. Madriver St.  
Bellefontaine OH 43311



Phone: (937) 593-7335  
Fax: (937) 593-7444

## BRADY 20 FEET STORM SEWER EASEMENT

Lying in Virginia Military Survey 4990, City of Bellefontaine, Lake Township, Logan County, Ohio.

Being a 20.00 feet wide storm sewer easement through the Karen H. Brady 2.5 acre tract as deeded and described in Official Record 70, Page 177 of the Logan County Records of Deeds and being more particularly described as follows:

Beginning at a 1-1/4 inch iron pipe found on the west line of Virginia Military Survey 4990, on the intersection of center-lines of Spring Avenue (60 feet wide) and Ludlow Road (60 feet wide).

THENCE, with the center-line extended of Spring Avenue, N 75°-45'-00"E, a distance of 30.00 feet to a point on the east right-of-way of Ludlow Road.

THENCE, with the east right-of-way of Ludlow Road, N 14°-15'-00"W, a distance of 70.46 feet to a 5/8 inch iron rod found.

THENCE, with the north line of the Village Builders & Lenhart, Inc. 6.04 acre tract (O.R. 710, Pg. 550, Tract I), S 84°-14'-59"E, a distance of 457.90 feet to a 5/8 inch iron rod set on the east bank of a creek.

THENCE, with the east bank of the creek N 5°31'-53"E, a distance of 25.00 feet to a point at the TRUE POINT OF BEGINNING.

THENCE, N 84°-28'-07"W, a distance of 10.00 feet to a point in the center of the creek.

THENCE, with the center of the creek, N 5°-31'-53"E, a distance of 20.00 feet to a point.

THENCE, S 84°-28'-07"E, a distance of 10.00 feet to a point on the east bank of the creek.

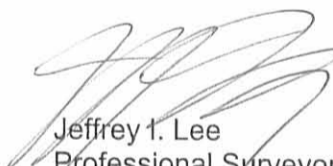
THENCE, with the east bank of the creek, S 5°-31'-53"W, a distance of 20.00 feet to the point of beginning.

The basis for bearings is the center-line of Ludlow Road, being N 14°-15'-00"W, and all other bearings are from angles and distances measured in a field survey by Lee Surveying and Mapping Co., Inc. on August 24, 2004.

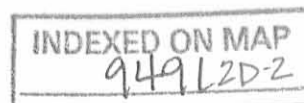
Description prepared by:



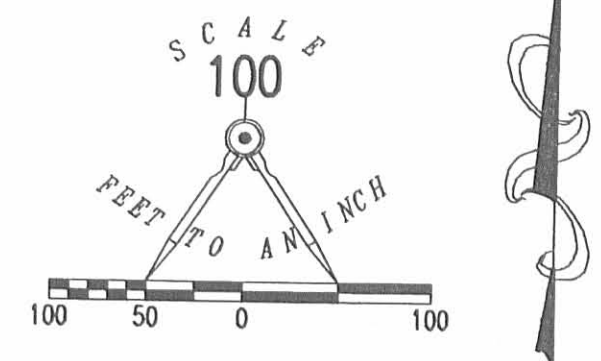
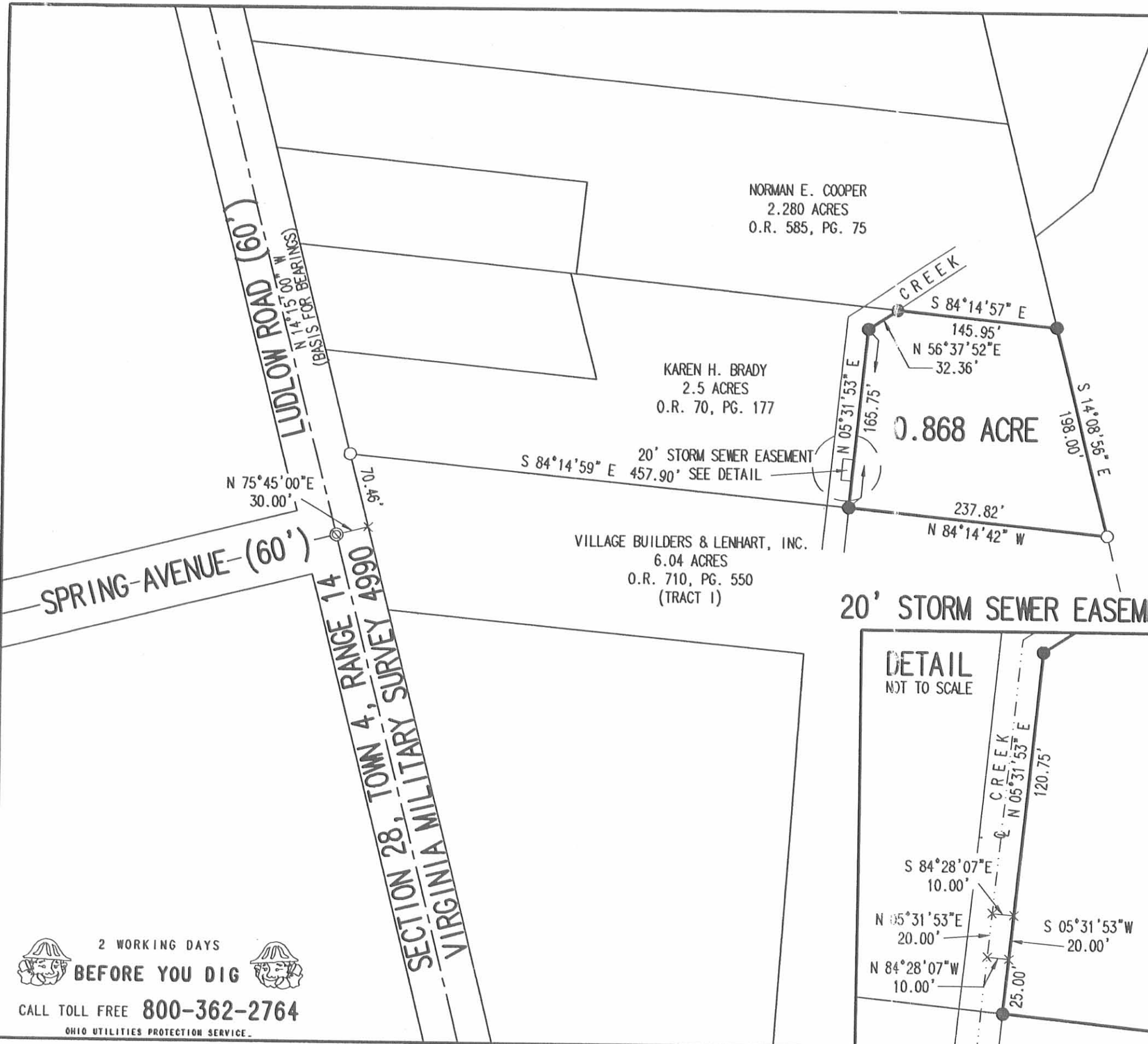
ORIGINAL STAMP IN GREEN

  
Jeffrey I. Lee  
Professional Surveyor 6359  
August 25, 2004

L-715



REC'D 8-31-04 SMOE

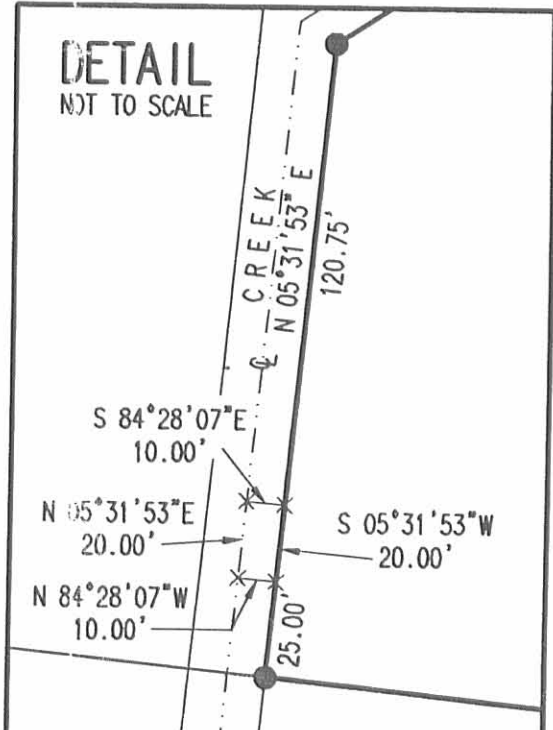


- LEGEND:
- 5/8 INCH IRON ROD SET
  - 5/8 INCH IRON ROD FOUND
  - ⊙ 1-1/4 INCH IRON PIPE FOUND

VILLAGE BUILDERS & LENHART, INC.  
 8.05 ACRES  
 O.R. 710, PG. 550  
 (TRACT 111)

**SURVEY OF 0.868 ACRE TRACT OUT OF THE  
 KAREN H. BRADY  
 2.5 ACRE TRACT  
 OFFICIAL RECORD 70, PAGE 177  
 VIRGINIA MILITARY SURVEY 4990  
 CITY OF BELLEFONTAINE  
 LAKE TOWNSHIP  
 LOGAN COUNTY, OHIO**

**20' STORM SEWER EASEMENT**



SURVEYED BY:  
  
 JEFFREY I. LEE  
 PROFESSIONAL SURVEYOR 6359  
 AUGUST 24, 2004

COPYRIGHT 2004 BY:  
 LEE SURVEYING & MAPPING CO., INC.  
 117 North Madriver Street  
 BELLEFONTAINE, OHIO 43311  
 (937) 593-7335

2 WORKING DAYS  
**BEFORE YOU DIG**  
 CALL TOLL FREE **800-362-2764**  
 OHIO UTILITIES PROTECTION SERVICE.

INDEXED ON MAP  
 9491 2P

KSR D413 715084B L-715-3

Received 7-14-11 09:56

# Lee Surveying and Mapping Co., Inc.

Land Surveys • Topography • Subdivisions • Construction Layout

117 N. Madriver St.  
Bellefontaine OH 43311



Phone: (937) 593-7335  
Fax: (937) 593-7444  
surveys@lsminc.us

## VILLAGE BUILDERS & LENHART, INC. 0.180 ACRE (FOR MORTGAGE PURPOSES ONLY)

Lying in Virginia Military Survey 4990, City of Bellefontaine, Lake Township, Logan County, Ohio.

Being out of the Village Builders & Lenhart, Inc., original 8.05 acre tract as deeded and described in Official Record 710, Page 550, Tract III of the Logan County Records of Deeds and being more particularly described as follows:

Beginning on a 5/8 inch iron rod found on the southwest corner of the 0.189 acre portion of Ludlow Bridge Condominiums – Phase XVI (Plat Cabinet B, Slide 122A), on a northerly line of the 0.672 acre portion of Ludlow Bridge Condominiums – Phase V (Plat Cabinet B, Slide 109B) and on the north right-of-way of Ludlow Bridge Boulevard (a 24 feet wide private street).

THENCE, with the said 0.672 acre portion of Ludlow Bridge Condominiums – Phase V and the north right-of-way of Ludlow Bridge Boulevard, a curve to the left, having a central angle of 22°-39'-40", a radius of 112.00 feet, an arc length of 44.30 feet, a chord bearing N 85°-58'-32"W, a distance of 44.01 feet to a 5/8 inch iron rod found on the southeast corner of the 0.184 acre portion of Ludlow Bridge Condominiums – Phase VI (Plat Cabinet B, Slide 105A).

THENCE, with the east line of said 0.184 acre portion of Ludlow Bridge Condominiums – Phase VI, N 07°-11'-00"W, a distance of 110.05 feet to a 5/8 inch iron rod found.

THENCE, S 89°-51'-46"E, a distance of 98.97 feet to a 5/8 inch iron rod found on the center-line of a vacated alley (O.R. 743, Pg. 622).

THENCE, with the west line of the aforesaid 0.189 acre portion of Ludlow Bridge Condominiums – Phase XVI, S 20°-14'-15"W, a distance of 119.41 feet to the point of beginning.

Containing 0.180 acre.

The basis for bearings is the west line of the 0.189 acre portion of Ludlow Bridge Condominiums – Phase XVI (Plat Cabinet B, Slide 122A), being S 20°-14'-15"W, and all other bearings are from angles and distances measured in a field survey by Lee Surveying and Mapping Co., Inc. on October 20, 2009.



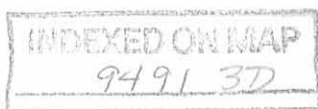
ORIGINAL STAMP IN GREEN

Description prepared by:

A handwritten signature in black ink that reads 'William K. Bruce'.

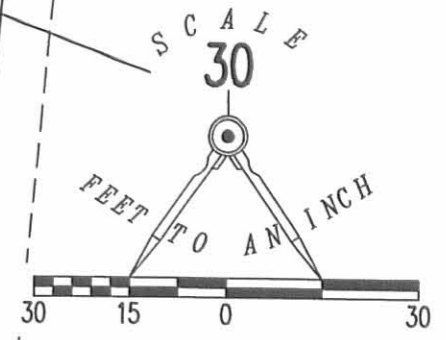
William K. Bruce  
Professional Surveyor 7437  
June 23, 2011

7150611

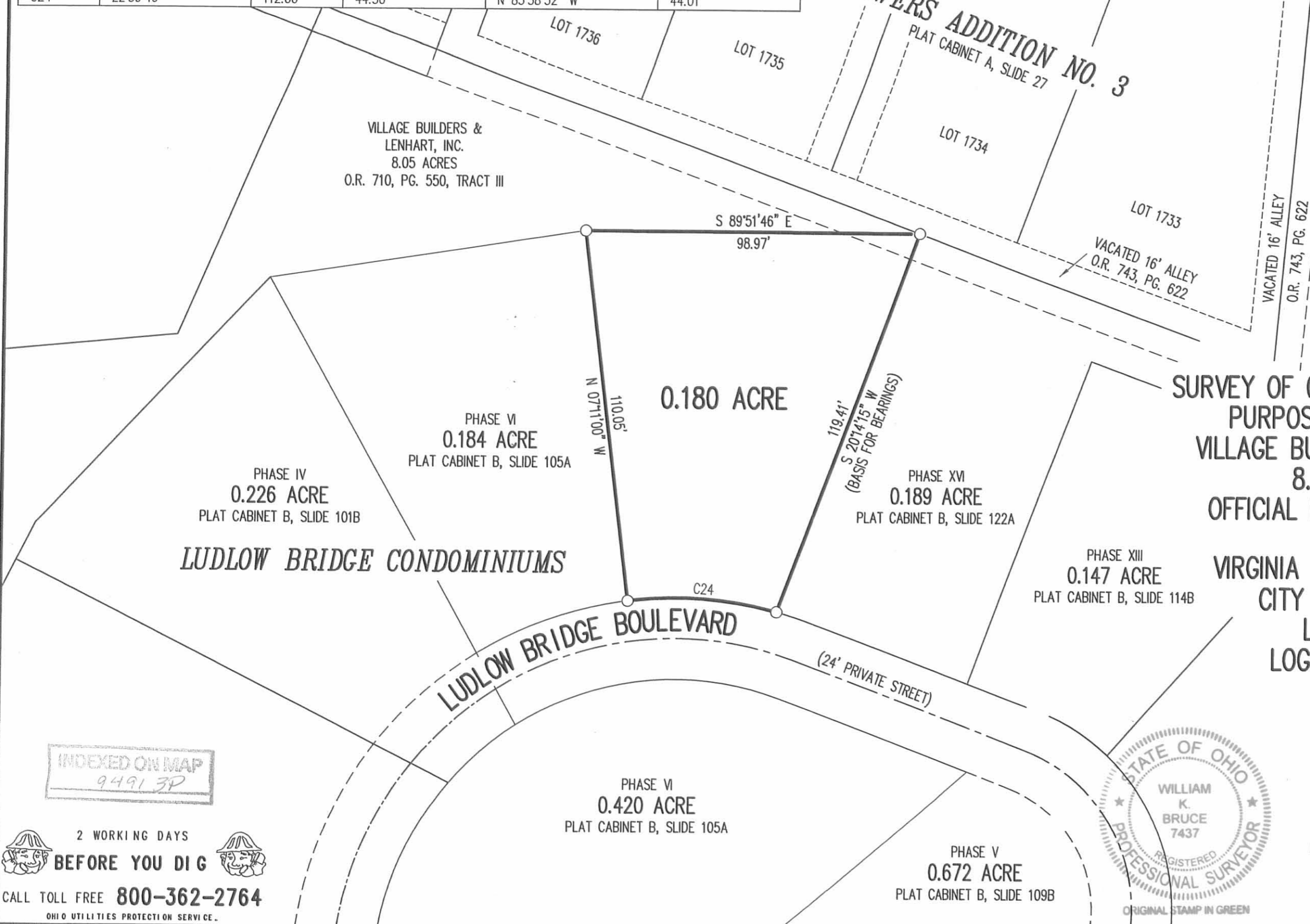


CURVE	DELTA ANGLE	RADIUS	ARC LENGTH	CHORD BEARING	CHORD LENGTH
C24	22°39'40"	112.00'	44.30'	N 85°58'32" W	44.01'

**POWERS ADDITION NO. 3**  
 PLAT CABINET A, SLIDE 27



VILLAGE BUILDERS &  
 LENHART, INC.  
 8.05 ACRES  
 O.R. 710, PG. 550, TRACT III

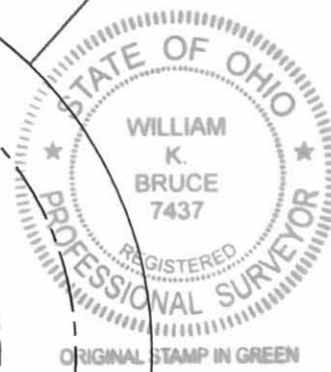


**SURVEY OF 0.180 ACRE FOR MORTGAGE PURPOSES ONLY OUT OF THE VILLAGE BUILDERS & LENHART, INC. 8.05 ACRE TRACT OFFICIAL RECORD 710, PAGE 550 TRACT III VIRGINIA MILITARY SURVEY 4990 CITY OF BELLEFONTAINE LAKE TOWNSHIP LOGAN COUNTY, OHIO**

SURVEYED BY:

*William K. Bruce*

WILLIAM K. BRUCE  
 PROFESSIONAL SURVEYOR 7437  
 JUNE 23, 2011



COPYRIGHT 2011 BY:  
**LEE SURVEYING & MAPPING CO., INC.**  
 117 North Madriver Street  
 BELLEFONTAINE, OHIO 43311  
 (937) 593-7335  
 surveys@lsminc.us  
 KSS LUDLOWBRIDGE 7150611 L-715-3

INDEXED ON MAP  
 94913P

2 WORKING DAYS  
**BEFORE YOU DIG**  
 CALL TOLL FREE **800-362-2764**  
 OHIO UTILITIES PROTECTION SERVICE.

9-25-12 smy ok

# Lee Surveying and Mapping Co., Inc.

Land Surveys • Topography • Subdivisions • Construction Layout

117 N. Madriver St.  
Bellefontaine OH 43311



Phone: (937) 593-7335  
Fax: (937) 593-7444  
surveys@lsminc.us

## EXHIBIT A LUDLOW BRIDGE CONDOMINIUMS – PHASE XXI 0.155 ACRE

Lying in Virginia Military Survey 4990, City of Bellefontaine, Lake Township, Logan County, Ohio.

Being out of the Village Builders & Lenhart, Inc., original 6.04 acre tract as deeded and described in Official Record 710, Page 550, Tract I of the Logan County Records of Deeds and being more particularly described as follows:

Beginning on a 5/8 inch iron rod found on the southwest corner of the 0.196 acre portion of Ludlow Bridge Condominiums – Phase IX (Plat Cabinet B, Slide 107A), on the north right-of-way of Stone Bridge Boulevard (a 24 feet wide private street).

THENCE, with the north right-of-way of Stone Bridge Boulevard and a northerly line of the 0.666 acre portion of Ludlow Bridge Condominiums – Phase V (Plat Cabinet B, Slide 109B), S 85°-28'-20"W, a distance of 55.15 feet to a 5/8 inch iron rod found.

THENCE, with an easterly line of the said 0.666 acre portion of Bridge Condominiums – Phase V, N 04°-31'-40"W, a distance of 87.86 feet to a 5/8 inch iron rod found.

THENCE, with the lines of the 0.137 acre portion of Ludlow Bridge Condominiums – Phase XVII (Plat Cabinet B, Slide 123B), the following two courses:

N 85°-28'-20"E, a distance of 11.63 feet to a 5/8 inch iron rod found.

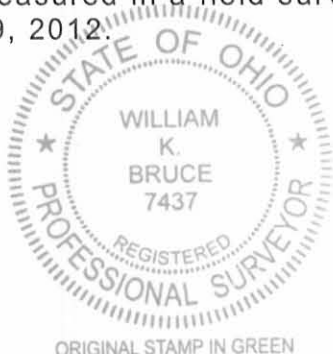
N 03°-35'-22"E, a distance of 50.92 feet to a 5/8 inch iron rod found.

THENCE, with the south line of the 1.048 acre portion of Ludlow Bridge Condominiums – Phase II (Plat Cabinet B, Slide 99A), S 85°-00'-33"E, a distance of 36.84 feet to a 5/8 inch iron rod found.

THENCE, with the west line of the aforesaid 0.196 acre portion of Ludlow Bridge Condominiums – Phase IX, S 04°-31'-40"E, a distance of 132.18 feet to the point of beginning.

Containing 0.155 acre.

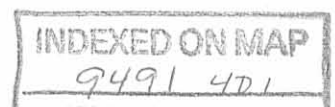
The basis for bearings is the west line of Virginia Military Survey 4990, being N 14°-15'-00"W, and all other bearings are from angles and distances measured in a field survey by Lee Surveying and Mapping Co., Inc. on September 19, 2012.



ORIGINAL STAMP IN GREEN

Description prepared by:

William K. Bruce  
Professional Surveyor 7437  
September 20, 2012



715LBC-Condo21

# Lee Surveying and Mapping Co., Inc.

Land Surveys • Topography • Subdivisions • Construction Layout

117 N. Madriver St.  
Bellefontaine OH 43311



Phone: (937) 593-7335  
Fax: (937) 593-7444  
surveys@lsminc.us

## EXHIBIT A LUDLOW BRIDGE CONDOMINIUMS – PHASE XXI 0.205 ACRE

Lying in Virginia Military Survey 4990, City of Bellefontaine, Lake Township, Logan County, Ohio.

Being out of the Village Builders & Lenhart, Inc., original 6.04 acre tract as deeded and described in Official Record 710, Page 550, Tract I of the Logan County Records of Deeds and being more particularly described as follows:

Beginning on a 5/8 inch iron rod found on the southeast corner of the 0.191 acre portion of Ludlow Bridge Condominiums – Phase XII (Plat Cabinet B, Slide 112B), on the west right-of-way of Stone Bridge Boulevard (a 24 feet wide private street).

THENCE, with the west right-of-way of Stone Bridge Boulevard, S 03°-35'-22"W, a distance of 58.00 feet to a 5/8 inch iron rod set.

THENCE, N 86°-24'-38"W, a distance of 153.70 feet to a 5/8 inch iron rod set.

THENCE, with the east lines of the Colleen Ray 0.41 acre tract (O.R. 984, Pg. 747) and the Carolyn A. Stokes 1.149 acre tract (O.R. 581, Pg. 930), N 03°-35'-22"E, a distance of 58.00 feet to a 5/8 inch iron rod found on the southwest corner of the aforesaid 0.191 acre portion of Ludlow Bridge Condominiums – Phase XII.

THENCE, with the south line of the said 0.191 acre portion of Ludlow Bridge Condominiums – Phase XII, S 86°-24'-38"E, a distance of 153.70 feet to the point of beginning.

Containing 0.205 acre.

The basis for bearings is the west line of Virginia Military Survey 4990, being N 14°-15'-00"W, and all other bearings are from angles and distances measured in a field survey by Lee Surveying and Mapping Co., Inc. on September 19, 2012.

Description prepared by:



ORIGINAL STAMP IN GREEN

William K. Bruce  
Professional Surveyor 7437  
September 20, 2012

715LBC-Condo21

