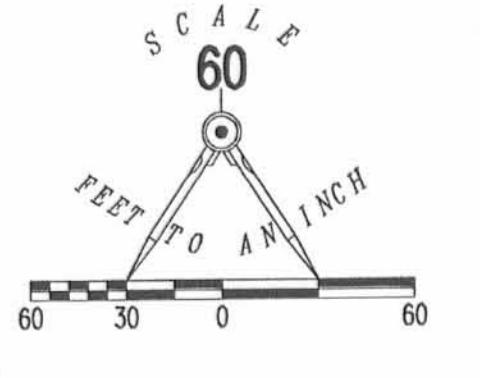


# EXHIBIT B TO DECLARATION AND BYLAWS OF LUDLOW BRIDGE CONDOMINIUMS - PHASE IX

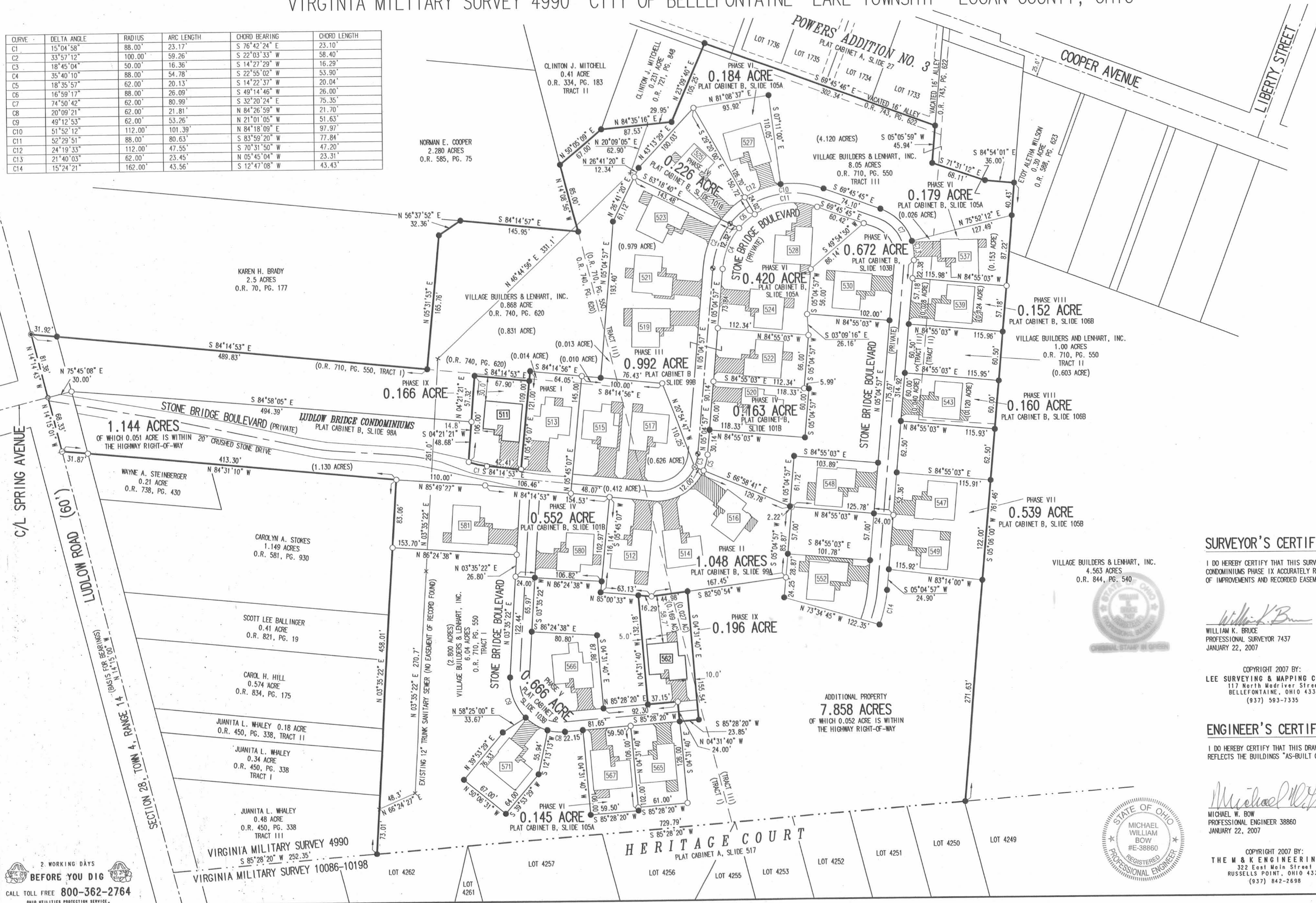
6.04 ACRE TRACT, 1.00 ACRE TRACT, 8.05 ACRE TRACT OFFICIAL RECORD 710, PAGE 550, TRACTS I, II AND III  
0.868 ACRE TRACT OFFICIAL RECORD 740, PAGE 620

VIRGINIA MILITARY SURVEY 4990 CITY OF BELLEFONTAINE LAKE TOWNSHIP LOGAN COUNTY, OHIO

CURVE	DELTA ANGLE	RADIUS	ARC LENGTH	CHORD BEARING	CHORD LENGTH
C1	15°04'58"	88.00	23.17	S 76°42'24" E	23.10
C2	33°57'12"	100.00	59.26	S 22°03'33" W	58.40
C3	18°45'04"	50.00	16.36	S 14°27'29" W	16.29
C4	35°40'10"	88.00	54.78	S 22°55'02" W	53.90
C5	18°35'57"	62.00	20.13	S 14°22'37" W	20.04
C6	16°59'17"	88.00	26.09	S 49°14'46" W	26.00
C7	74°50'42"	62.00	80.99	S 32°20'24" E	75.35
C8	20°09'21"	62.00	21.81	N 84°26'59" W	21.70
C9	49°12'53"	62.00	53.26	N 21°01'05" W	51.63
C10	51°52'12"	112.00	101.39	N 84°18'09" E	97.97
C11	52°29'51"	88.00	80.63	S 83°59'20" W	77.84
C12	24°19'33"	112.00	47.55	S 70°31'50" W	47.20
C13	21°40'03"	62.00	23.45	N 05°45'04" W	23.31
C14	15°24'21"	162.00	43.56	S 12°47'08" W	43.43



- LEGEND:
- ⊙ 1-1/4 INCH IRON PIPE FOUND
  - 5/8 INCH IRON ROD SET
  - 5/8 INCH IRON ROD FOUND
  - ⊙ MAG NAIL SET
  - ⊙ MAG NAIL FOUND
  - ⊙ RAILROAD SPIKE SET
  - ⊙ RAILROAD SPIKE FOUND
  - ▨ LIMITED COMMON AREA
  - [ ] UNIT NUMBER



- NOTES:
- EASEMENTS IF SHOWN ARE AS PROVIDED BY DEVELOPER. THE SURVEYOR DID NOT SEARCH FOR ADDITIONAL EASEMENTS.
  - THE WORD "CERTIFY" IS INTENDED TO BE AS DEFINED IN OHIO ADMINISTRATIVE CODE 4733-35-04(C).
  - BUILDING HEIGHT FROM PEAK OF ROOF TO GROUND:  
UNIT 511 IS 19.8'  
UNIT 562 IS 21.5'

**SURVEYOR'S CERTIFICATION:**

I DO HEREBY CERTIFY THAT THIS SURVEY OF LUDLOW BRIDGE CONDOMINIUMS PHASE IX ACCURATELY REFLECTS THE LOCATION OF IMPROVEMENTS AND RECORDED EASEMENTS.

*William K. Bruce*  
WILLIAM K. BRUCE  
PROFESSIONAL SURVEYOR 7437  
JANUARY 22, 2007

COPYRIGHT 2007 BY:  
LEE SURVEYING & MAPPING CO., INC.  
117 North Madison Street  
BELLEFONTAINE, OHIO 43311  
(937) 593-7335

**ENGINEER'S CERTIFICATION:**

I DO HEREBY CERTIFY THAT THIS DRAWING ACCURATELY REFLECTS THE BUILDINGS "AS-BUILT OR CONSTRUCTED".

*Michael W. Bow*  
MICHAEL W. BOW  
PROFESSIONAL ENGINEER 38860  
JANUARY 22, 2007

COPYRIGHT 2007 BY:  
THE M & K ENGINEERING CO.  
322 East Main Street  
RUSSELLS POINT, OHIO 43311  
(937) 842-2698

PRE-APPROVAL *J.C.H.* 2-15-07  
PLAT CHECKED *J.C.H.* 2-15-07  
TRANSFERRED THIS 15th DAY OF February, 2007  
AUDITOR, LOGAN COUNTY, OHIO  
RECORDED IN PLAT CABINET B, SLIDE 107A  
RECEIVED FOR RECORD AT 10:45 O'CLOCK A.M.  
THIS 15th DAY OF February, 2007  
*Sandra Hanson*  
RECORDER, LOGAN COUNTY, OHIO

2 WORKING DAYS  
BEFORE YOU DIG  
CALL TOLL FREE 800-362-2764  
OHIO UTILITIES PROTECTION SERVICE



2007001070

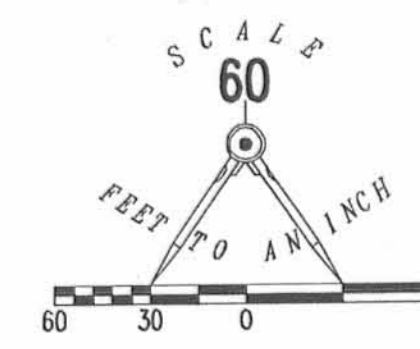


# EXHIBIT B TO DECLARATION AND BYLAWS OF LUDLOW BRIDGE CONDOMINIUMS - PHASE X

6.04 ACRE TRACT, 1.00 ACRE TRACT, 8.05 ACRE TRACT OFFICIAL RECORD 710, PAGE 550, TRACTS I, II AND III

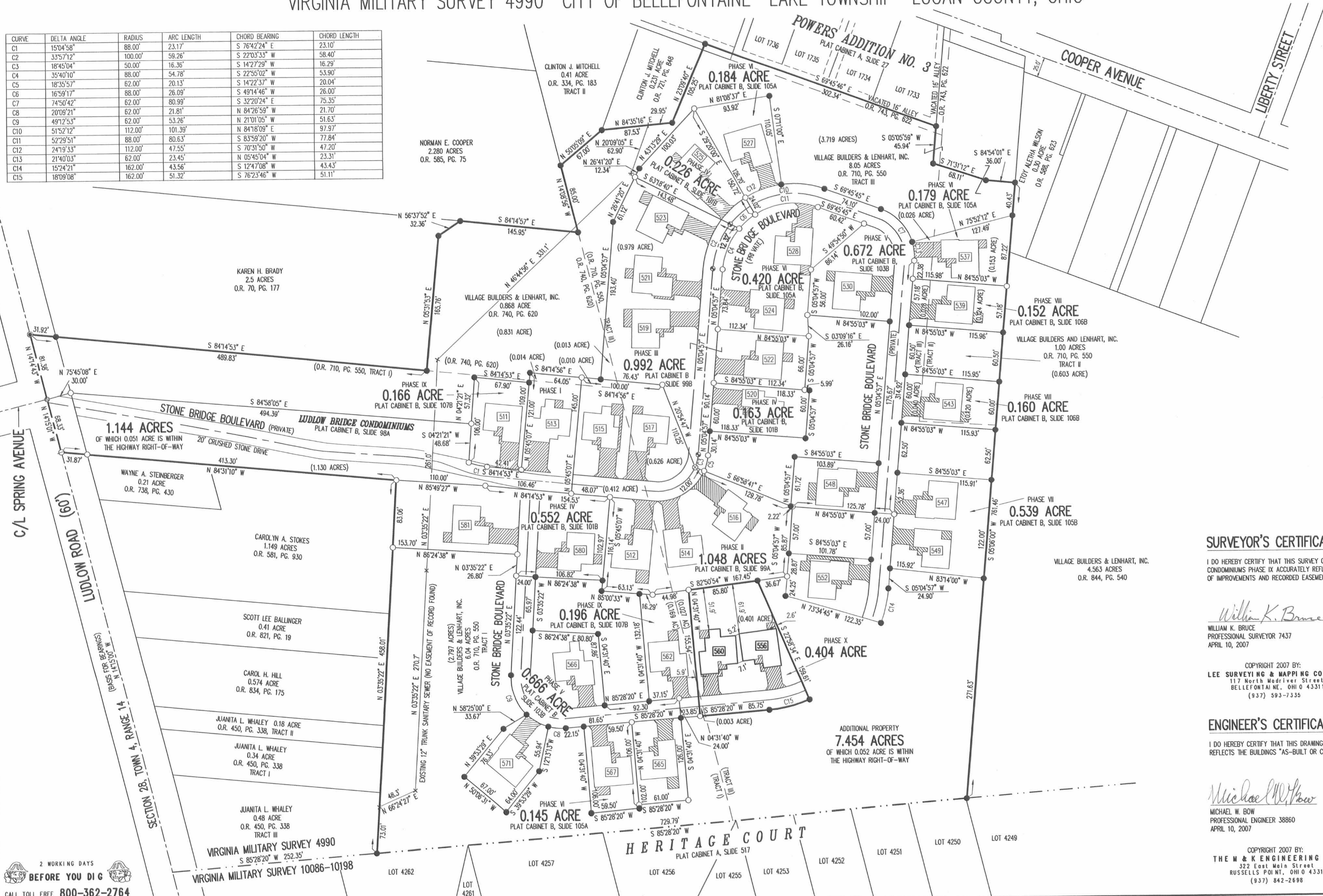
0.868 ACRE TRACT OFFICIAL RECORD 740, PAGE 620

VIRGINIA MILITARY SURVEY 4990 CITY OF BELLEFONTAINE LAKE TOWNSHIP LOGAN COUNTY, OHIO



CURVE	DELTA ANGLE	RADIUS	ARC LENGTH	CHORD BEARING	CHORD LENGTH
C1	15°04'58"	88.00'	23.17'	S 76°42'24" E	23.10'
C2	33°57'12"	100.00'	59.26'	S 22°03'33" W	58.40'
C3	18°45'04"	50.00'	16.36'	S 14°27'29" W	16.29'
C4	35°40'10"	88.00'	54.78'	S 22°55'02" W	53.90'
C5	18°35'57"	62.00'	20.13'	S 14°22'37" W	20.04'
C6	16°59'17"	88.00'	26.09'	S 49°14'46" W	26.00'
C7	74°50'42"	62.00'	80.99'	S 32°20'24" E	75.35'
C8	20°08'21"	62.00'	21.81'	N 84°26'59" W	21.70'
C9	49°12'53"	62.00'	53.28'	N 21°01'05" W	51.63'
C10	51°52'12"	112.00'	101.39'	N 84°18'09" E	97.97'
C11	52°29'51"	88.00'	80.63'	S 83°59'20" W	77.84'
C12	24°19'33"	112.00'	47.55'	S 70°31'50" W	47.20'
C13	21°40'03"	62.00'	23.45'	N 05°45'04" W	23.31'
C14	18°24'21"	162.00'	43.56'	S 12°47'08" W	43.43'
C15	18°09'08"	162.00'	51.32'	S 76°23'46" W	51.11'

- LEGEND:
- 1-1/4 INCH IRON PIPE FOUND
  - 5/8 INCH IRON ROD SET
  - 5/8 INCH IRON ROD FOUND
  - MAG NAIL SET
  - MAG NAIL FOUND
  - RAILROAD SPIKE SET
  - RAILROAD SPIKE FOUND
  - ▨ LIMITED COMMON AREA
  - 111 UNIT NUMBER



- NOTES:
- EASEMENTS IF SHOWN ARE AS PROVIDED BY DEVELOPER. THE SURVEYOR DID NOT SEARCH FOR ADDITIONAL EASEMENTS.
  - THE WORD "CERTIFY" IS INTENDED TO BE AS DEFINED IN OHIO ADMINISTRATIVE CODE 4733-35-04(C).
  - BUILDING HEIGHT FROM PEAK OF ROOF TO GROUND:  
UNIT 556 IS 19.8'  
UNIT 560 IS 19.6'

**SURVEYOR'S CERTIFICATION:**

I DO HEREBY CERTIFY THAT THIS SURVEY OF LUDLOW BRIDGE CONDOMINIUMS PHASE IX ACCURATELY REFLECTS THE LOCATION OF IMPROVEMENTS AND RECORDED EASEMENTS.

*William K. Bruce*  
WILLIAM K. BRUCE  
PROFESSIONAL SURVEYOR 7437  
APRIL 10, 2007

COPYRIGHT 2007 BY:  
LEE SURVEYING & MAPPING CO., INC.  
117 North Meddinger Street  
BELLEFONTAINE, OHIO 43311  
(937) 593-7335

**ENGINEER'S CERTIFICATION:**

I DO HEREBY CERTIFY THAT THIS DRAWING ACCURATELY REFLECTS THE BUILDINGS "AS-BUILT OR CONSTRUCTED".

*Michael W. Bow*  
MICHAEL W. BOW  
PROFESSIONAL ENGINEER 38860  
APRIL 10, 2007

COPYRIGHT 2007 BY:  
THE M & K ENGINEERING CO.  
322 East Main Street  
RUSSELLS POINT, OHIO 43311  
(937) 842-2698

PRE-APPROVAL *J.C. [Signature]* 4-13-07  
 PLAT CHECKED *J.C. [Signature]* 4-13-07  
 TRANSFERRED THIS 13<sup>th</sup> DAY OF April, 2007  
 AUDITOR, LOGAN COUNTY, OHIO *Michael E. [Signature]*  
 RECORDED IN PLAT CABINET B, SLIDE 108A  
 RECEIVED FOR RECORD AT 2:16 O'CLOCK P.M.  
 THIS 13<sup>th</sup> DAY OF April, 2007  
 RECORDER, LOGAN COUNTY, OHIO *Linda Hanson*

2 WORKING DAYS  
BEFORE YOU DIG  
CALL TOLL FREE 800-362-2764  
OHIO UTILITIES PROTECTION SERVICE



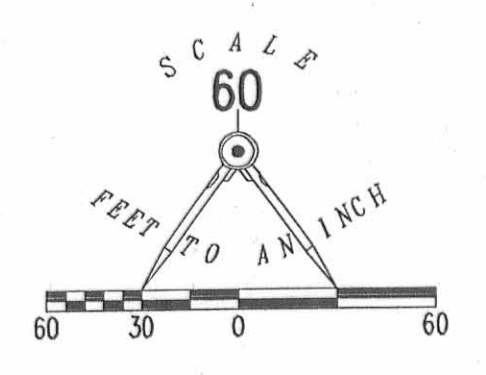
EXHIBIT B TO DECLARATION AND BYLAWS OF

# LUDLOW BRIDGE CONDOMINIUMS - PHASE V

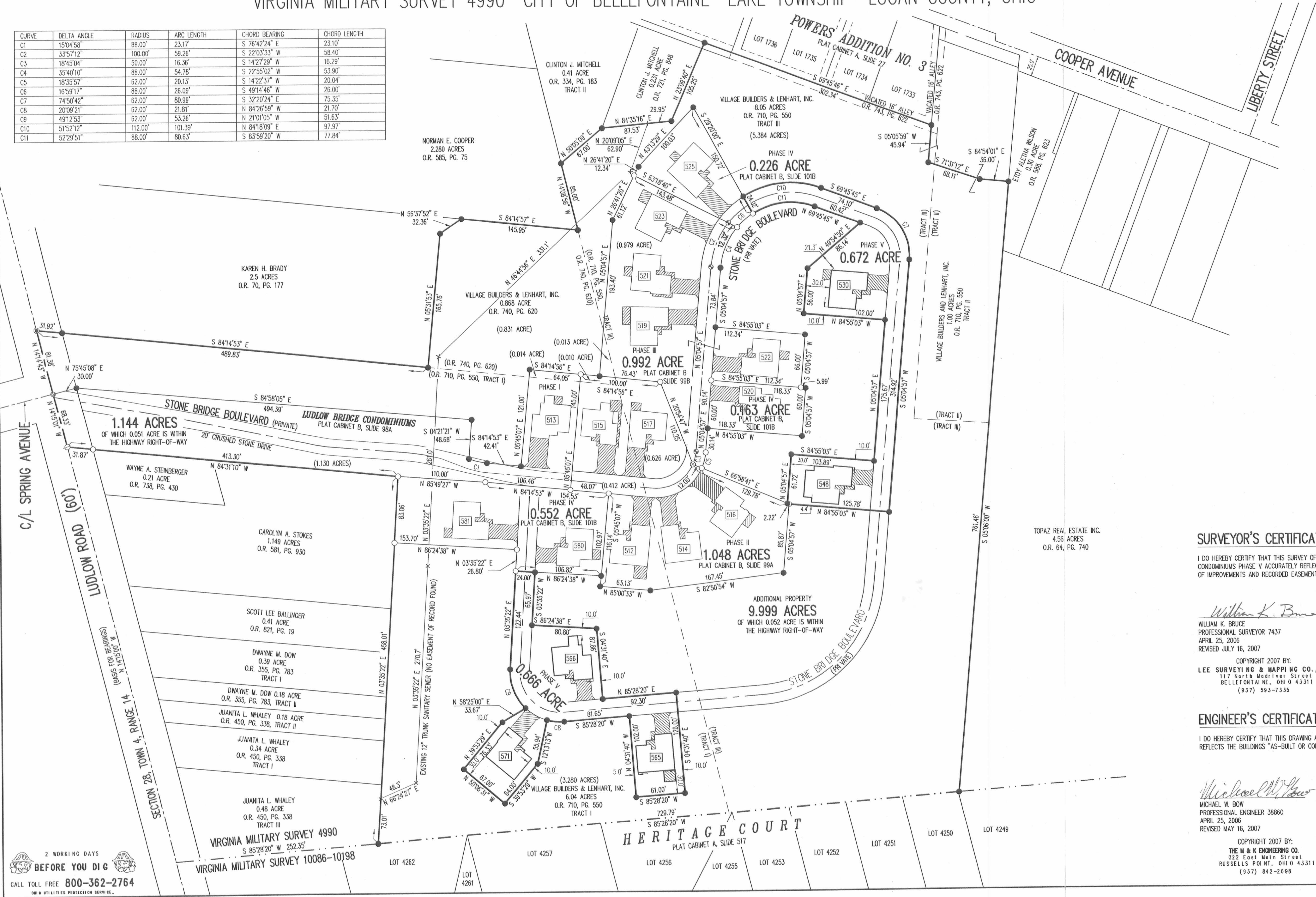
6.04 ACRE TRACT, 1.00 ACRE TRACT, 8.05 ACRE TRACT OFFICIAL RECORD 710, PAGE 550, TRACTS I, II AND III

0.868 ACRE TRACT OFFICIAL RECORD 740, PAGE 620

VIRGINIA MILITARY SURVEY 4990 CITY OF BELLEFONTAINE LAKE TOWNSHIP LOGAN COUNTY, OHIO



CURVE	DELTA ANGLE	RADIUS	ARC LENGTH	CHORD BEARING	CHORD LENGTH
C1	15°04'58"	88.00'	23.17'	S 76°42'24" E	23.10'
C2	33°57'12"	100.00'	59.26'	S 22°03'33" W	58.40'
C3	18°45'04"	50.00'	16.36'	S 14°27'29" W	16.29'
C4	35°40'10"	88.00'	54.78'	S 22°55'02" W	53.90'
C5	18°35'57"	62.00'	20.13'	S 14°22'37" W	20.04'
C6	16°59'17"	88.00'	26.09'	S 49°14'46" W	26.00'
C7	74°50'42"	80.99'	80.99'	S 32°20'24" E	75.35'
C8	20°09'21"	62.00'	21.81'	N 84°26'59" W	21.70'
C9	49°12'53"	62.00'	53.26'	N 21°01'05" W	51.63'
C10	51°52'12"	112.00'	101.39'	N 84°18'09" E	97.97'
C11	52°29'51"	88.00'	80.63'	S 83°59'20" W	77.84'



- LEGEND:
- 1-1/4 INCH IRON PIPE FOUND
  - 5/8 INCH IRON ROD SET
  - 5/8 INCH IRON ROD FOUND
  - MAG NAIL SET
  - MAG NAIL FOUND
  - RAILROAD SPIKE SET
  - RAILROAD SPIKE FOUND
  - ▨ LIMITED COMMON AREA
  - UNIT NUMBER

- NOTES:
- EASEMENTS IF SHOWN ARE AS PROVIDED BY DEVELOPER. THE SURVEYOR DID NOT SEARCH FOR ADDITIONAL EASEMENTS.
  - THE WORD "CERTIFY" IS INTENDED TO BE AS DEFINED IN OHIO ADMINISTRATIVE CODE 4733-35-04(C).
  - BUILDING HEIGHT FROM PEAK OF ROOF TO GROUND:  
 UNIT 530 IS 23.9'  
 UNIT 548 IS 21.0'  
 UNIT 565 IS 19.8'  
 UNIT 566 IS 21.1'  
 UNIT 571 IS 19.5'

**SURVEYOR'S CERTIFICATION:**

I DO HEREBY CERTIFY THAT THIS SURVEY OF LUDLOW BRIDGE CONDOMINIUMS PHASE V ACCURATELY REFLECTS THE LOCATION OF IMPROVEMENTS AND RECORDED EASEMENTS.

*William K. Bruce*  
 WILLIAM K. BRUCE  
 PROFESSIONAL SURVEYOR 7437  
 APRIL 25, 2006  
 REVISED JULY 16, 2007



**ENGINEER'S CERTIFICATION:**

I DO HEREBY CERTIFY THAT THIS DRAWING ACCURATELY REFLECTS THE BUILDINGS "AS-BUILT OR CONSTRUCTED".

*Michael W. Bow*  
 MICHAEL W. BOW  
 PROFESSIONAL ENGINEER 38860  
 APRIL 25, 2006  
 REVISED MAY 16, 2007



COPYRIGHT 2007 BY:  
 THE M & K ENGINEERING CO.  
 322 East Main Street  
 RUSSELLS POINT, OHIO 43311  
 (937) 842-2698

PRE-APPROVAL *J.C.H.* 8-6-07  
 PLAT CHECKED *J.C.H.* 8-6-07  
 TRANSFERRED THIS 6th DAY OF August, 2007  
 AUDITOR, LOGAN COUNTY, OHIO  
 RECORDED IN PLAT CABINET B, SLIDE 109B  
 RECEIVED FOR RECORD AT 1:32:58 O'CLOCK P.M.  
 THIS 6th DAY OF August, 2007  
 RECORDER, LOGAN COUNTY, OHIO  
*Linda Hanson*

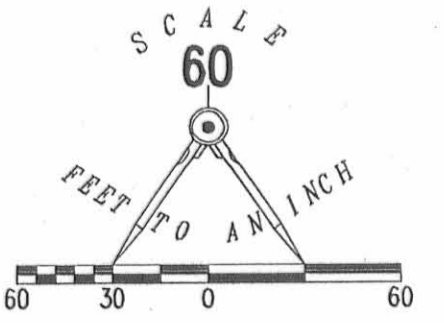
2 WORKING DAYS  
**BEFORE YOU DIG**  
 CALL TOLL FREE 800-362-2764  
 OHIO UTILITIES PROTECTION SERVICE

2007005930



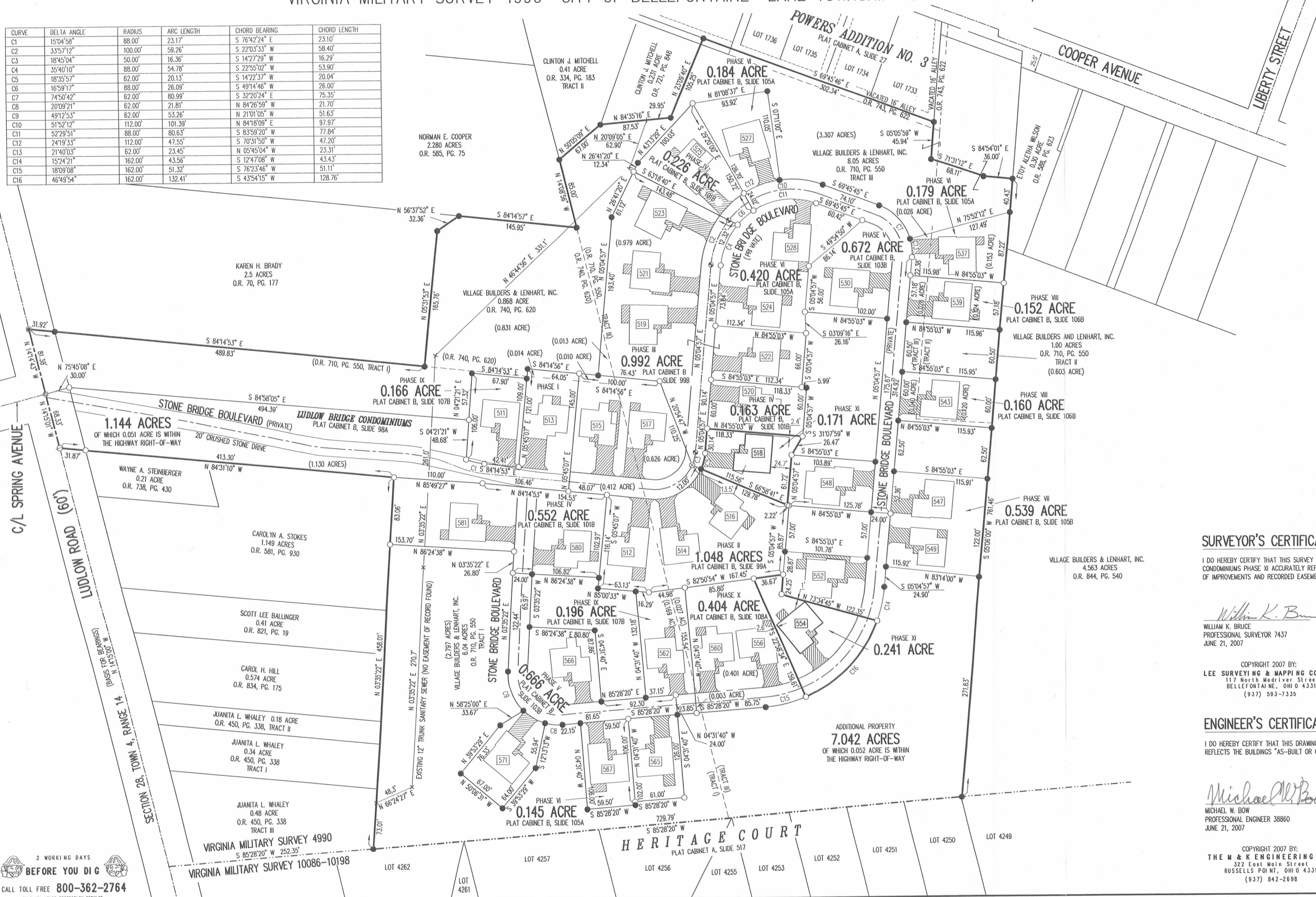
# LUDLOW BRIDGE CONDOMINIUMS - PHASE XI

EXHIBIT B TO DECLARATION AND BYLAWS OF  
 6.04 ACRE TRACT, 1.00 ACRE TRACT, 8.05 ACRE TRACT OFFICIAL RECORD 710, PAGE 550, TRACTS I, II AND III  
 0.868 ACRE TRACT OFFICIAL RECORD 740, PAGE 620  
 VIRGINIA MILITARY SURVEY 4990 CITY OF BELLEFONTAINE LAKE TOWNSHIP LOGAN COUNTY, OHIO



- LEGEND:
- 1-1/4 INCH IRON PIPE FOUND
  - 5/8 INCH IRON ROD SET
  - 5/8 INCH IRON ROD FOUND
  - MAG NAIL SET
  - MAG NAIL FOUND
  - RAILROAD SPIKE SET
  - RAILROAD SPIKE FOUND
  - ▨ LIMITED COMMON AREA
  - UNIT NUMBER

CURVE	DELTA ANGLE	RADIUS	ARC LENGTH	CHORD BEARING	CHORD LENGTH
C1	15°04'58"	88.00'	23.17'	S 76°42'24" E	23.10'
C2	33°57'12"	100.00'	58.26'	S 22°03'33" W	58.40'
C3	18°45'04"	50.00'	16.36'	S 14°27'29" W	16.29'
C4	35°40'10"	88.00'	54.78'	S 22°55'02" W	53.90'
C5	18°35'57"	62.00'	20.13'	S 14°27'37" W	20.04'
C6	16°59'17"	88.00'	26.09'	S 49°14'46" W	26.00'
C7	74°50'42"	62.00'	80.99'	S 32°20'24" E	75.35'
C8	20°09'21"	112.00'	101.39'	N 84°26'59" W	21.70'
C9	49°12'53"	62.00'	53.26'	N 21°01'05" E	51.63'
C10	51°52'12"	112.00'	101.39'	N 84°18'09" E	97.97'
C11	52°29'51"	88.00'	80.63'	S 83°59'20" W	77.84'
C12	24°19'33"	112.00'	47.55'	S 70°31'50" W	47.20'
C13	21°40'03"	62.00'	23.45'	N 05°45'04" W	23.31'
C14	15°24'21"	162.00'	43.56'	S 12°47'06" W	43.43'
C15	18°09'08"	162.00'	51.32'	S 76°23'46" W	51.11'
C16	46°49'54"	162.00'	132.41'	S 43°54'15" W	128.76'



**NOTES:**

1. EASEMENTS IF SHOWN ARE AS PROVIDED BY DEVELOPER. THE SURVEYOR DID NOT SEARCH FOR ADDITIONAL EASEMENTS.
2. THE WORD "CERTIFY" IS INTENDED TO BE AS DEFINED IN OHIO ADMINISTRATIVE CODE 4733-35-04(C).
3. BUILDING HEIGHT FROM PEAK OF ROOF TO GROUND:  
 UNIT 518 IS 20.0'  
 UNIT 554 IS 20.1'

**SURVEYOR'S CERTIFICATION:**

I DO HEREBY CERTIFY THAT THIS SURVEY OF LUDLOW BRIDGE CONDOMINIUMS PHASE XI ACCURATELY REFLECTS THE LOCATION OF IMPROVEMENTS AND RECORDED EASEMENTS.

*William K. Bruce*  
 WILLIAM K. BRUCE  
 PROFESSIONAL SURVEYOR 7437  
 JUNE 21, 2007

COPYRIGHT 2007 BY:  
 LEE SURVEYING & MAPPING CO., INC.  
 117 North Medivler Street  
 BELLEFONTAINE, OHIO 43311  
 (937) 593-7335

**ENGINEER'S CERTIFICATION:**

I DO HEREBY CERTIFY THAT THIS DRAWING ACCURATELY REFLECTS THE BUILDINGS "AS-BUILT OR CONSTRUCTED".

*Michael W. Bow*  
 MICHAEL W. BOW  
 PROFESSIONAL ENGINEER 38860  
 JUNE 21, 2007

COPYRIGHT 2007 BY:  
 THE M & K ENGINEERING CO.  
 322 East Main Street  
 RUSSELLS POINT, OHIO 43311  
 (937) 842-2698



PRE-APPROVAL *J.C.H.* 8-15-07  
 PLAT CHECKED *J.C.H.* 8-15-07  
 TRANSFERRED THIS 15<sup>th</sup> DAY OF August, 2007  
 AUDITOR, LOGAN COUNTY, OHIO  
 RECORDED IN PLAT CABINET B, SLIDE 110A  
 RECEIVED FOR RECORD AT 3:29 O'CLOCK P.M.  
 THIS 15<sup>th</sup> DAY OF August, 2007  
*Linda Hanson*  
 RECORDER, LOGAN COUNTY, OHIO

2 WORKING DAYS  
**BEFORE YOU DIG**  
 CALL TOLL FREE 800-362-2764  
 OHIO PROFESSIONAL SURVEYORS

20070619H