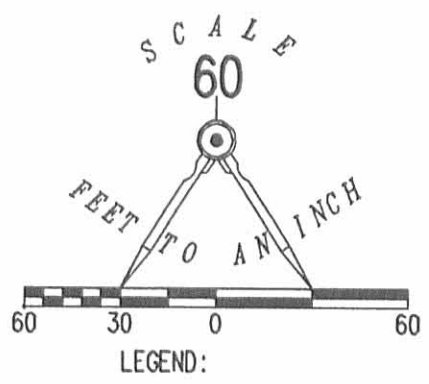


REC'D 4-18-06 8:40 AM

2 WORKING DAYS
BEFORE YOU DIG
CALL TOLL FREE 800-362-2764
OHIO UTILITIES PROTECTION SERVICE.



COOPER AVENUE (40')

POWERS ADDITION NO. 3
PLAT CABINET A, SLIDE 27

VACATED ALLEY
O.R. 743, PG. 622
LOT 1733

LUDLOW BRIDGE CONDOMINIUMS
PHASE IV (0.226 ACRE)
PLAT CABINET B, SLIDE 101B

S 71°31'12" E
5.14'

S 05°05'59" W
18.59'

10' UTILITY EASEMENT #1

SURVEY OF 10 FEET WIDE AND
20 FEET WIDE UTILITY EASEMENTS
THROUGH THE VILLAGE BUILDERS AND LENHART, INC.
ORIGINAL 6.04 ACRE AND 8.05 ACRE TRACTS
OFFICIAL RECORD 710, PAGE 550
TRACT I AND TRACT II
VIRGINIA MILITARY SURVEY 4990
CITY OF BELLEFONTAINE
LAKE TOWNSHIP
LOGAN COUNTY, OHIO

VILLAGE BUILDERS & LENHART, INC.
1.00 ACRES
O.R. 710, PG. 550
TRACT II

VILLAGE BUILDERS & LENHART, INC.
6.04 ACRES
O.R. 710, PG. 550
TRACT I

VILLAGE BUILDERS & LENHART, INC.
8.05 ACRES
O.R. 710, PG. 550
TRACT III

LUDLOW BRIDGE CONDOMINIUMS
PHASE II
PLAT CABINET B, SLIDE 99A



ORIGINAL STAMP IN GREEN

MAP PREPARED BY:

Jeffrey I. Lee
JEFFREY I. LEE
PROFESSIONAL SURVEYOR 6359
APRIL 4, 2006

COPYRIGHT 2006 BY:
LEE SURVEYING & MAPPING CO., INC.
117 North Madriver Street
BELLEFONTAINE, OHIO 43311
(937) 593-7335

KSR D0306 715046 715094B.ASC L-715-3

TIE-LINE
S 03°11'21" W 132.12'
TIE-LINE
S 05°43'39" E
43.59'

(TRACT I)
(TRACT II)
(TRACT III)

N 27°44'36" E
46.61'

N 50°14'36" E
66.37'

N 72°44'36" E
78.06'

N 85°28'20" E
180.50'

20' UTILITY EASEMENT #2
N 84°16'05" E
254.09'

10' UTILITY EASEMENT #2

N 05°04'57" E
422.04'

N 05°04'57" E
395.77'

(TRACT II)
(TRACT III)

S 29°20'00" E
119.43'

S 83°34'58" E
54.06'

20' UTILITY EASEMENT #1
S 83°34'58" E
139.57'

S 87°44'15" W
35.46'

S 69°45'45" E
70.30'

N 39°10'10" W
17.97'

N 39°10'10" W
17.97'

S 42°07'53" W
106.72'

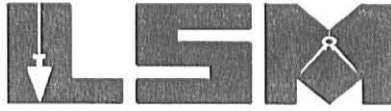
S 05°05'59" W
168.18'

N 69°45'45" W
8.29'

REC'D 8-31-04 SML/LL

Lee Surveying and Mapping Co., Inc.

Land Surveys • Topography • Subdivisions • Construction Layout



117 N. Madriver St.
Bellefontaine OH 43311

Phone: (937) 593-7335
Fax: (937) 593-7444

BRADY 0.868 ACRE

Lying in Virginia Military Survey 4990, City of Bellefontaine, Lake Township, Logan County, Ohio.

Being out of the Karen H. Brady 2.5 acre tract as deeded and described in Official Record 70, Page 177 of the Logan County Records of Deeds and being more particularly described as follows:

Beginning at a 1-1/4 inch iron pipe found on the west line of Virginia Military Survey 4990, on the intersection of center-lines of Spring Avenue (60 feet wide) and Ludlow Road (60 feet wide).

THENCE, with the center-line extended of Spring Avenue, N 75°-45'-00"E, a distance of 30.00 feet to a point on the east right-of-way of Ludlow Road.

THENCE, with the east right-of-way of Ludlow Road, N 14°-15'-00"W, a distance of 70.46 feet to a 5/8 inch iron rod found.

THENCE, with the north line of the Village Builders & Lenhart, Inc. 6.04 acre tract (O.R. 710, Pg. 550, Tract I), S 84°-14'-59"E, a distance of 457.90 feet to a 5/8 inch iron rod set on the east bank of a creek at the TRUE POINT OF BEGINNING.

THENCE, with the east bank of the creek, the following two courses:

N 5°31'-53"E, a distance of 165.75 feet to a 5/8 inch iron rod set.

N 56°-37'-52"E, a distance of 32.36 feet to a 5/8 inch iron rod set.

THENCE, with the south line of the Norman E. Cooper 2.280 acre tract (O.R. 585, Pg. 75), S 84°-14'-57"E, a distance of 145.95 feet to a 5/8 inch iron rod set.

THENCE, with the west line of the Village Builders & Lenhart, Inc. 8.05 acre tract (O.R. 710, Pg. 550, Tract III), S 14°-08'-56"E, a distance of 198.00 feet to a 5/8 inch iron rod found.

THENCE, with the north line of the aforesaid 6.04 acre tract, N 84°-14'-42"W, a distance of 237.82 feet to the point of beginning.

Containing 0.868 acre.

The basis for bearings is the center-line of Ludlow Road, being N 14°-15'-00"W, and all other bearings are from angles and distances measured in a field survey by Lee Surveying and Mapping Co., Inc. on August 24, 2004.

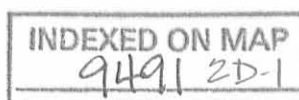


ORIGINAL STAMP IN GREEN

Description prepared by:

Jeffrey I. Lee
Jeffrey I. Lee
Professional Surveyor 6359
August 25, 2004

L-715

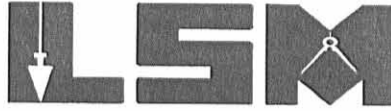


Deed 8-31-04 SLM OK

Lee Surveying and Mapping Co., Inc.

Land Surveys • Topography • Subdivisions • Construction Layout

117 N. Madriver St.
Bellefontaine OH 43311



Phone: (937) 593-7335
Fax: (937) 593-7444

BRADY 20 FEET STORM SEWER EASEMENT

Lying in Virginia Military Survey 4990, City of Bellefontaine, Lake Township, Logan County, Ohio.

Being a 20.00 feet wide storm sewer easement through the Karen H. Brady 2.5 acre tract as deeded and described in Official Record 70, Page 177 of the Logan County Records of Deeds and being more particularly described as follows:

Beginning at a 1-1/4 inch iron pipe found on the west line of Virginia Military Survey 4990, on the intersection of center-lines of Spring Avenue (60 feet wide) and Ludlow Road (60 feet wide).

THENCE, with the center-line extended of Spring Avenue, N 75°-45'-00"E, a distance of 30.00 feet to a point on the east right-of-way of Ludlow Road.

THENCE, with the east right-of-way of Ludlow Road, N 14°-15'-00"W, a distance of 70.46 feet to a 5/8 inch iron rod found.

THENCE, with the north line of the Village Builders & Lenhart, Inc. 6.04 acre tract (O.R. 710, Pg. 550, Tract I), S 84°-14'-59"E, a distance of 457.90 feet to a 5/8 inch iron rod set on the east bank of a creek.

THENCE, with the east bank of the creek N 5°31'-53"E, a distance of 25.00 feet to a point at the TRUE POINT OF BEGINNING.

THENCE, N 84°-28'-07"W, a distance of 10.00 feet to a point in the center of the creek.

THENCE, with the center of the creek, N 5°-31'-53"E, a distance of 20.00 feet to a point.

THENCE, S 84°-28'-07"E, a distance of 10.00 feet to a point on the east bank of the creek.

THENCE, with the east bank of the creek, S 5°-31'-53"W, a distance of 20.00 feet to the point of beginning.

The basis for bearings is the center-line of Ludlow Road, being N 14°-15'-00"W, and all other bearings are from angles and distances measured in a field survey by Lee Surveying and Mapping Co., Inc. on August 24, 2004.

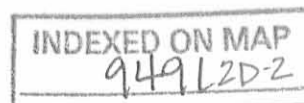
Description prepared by:



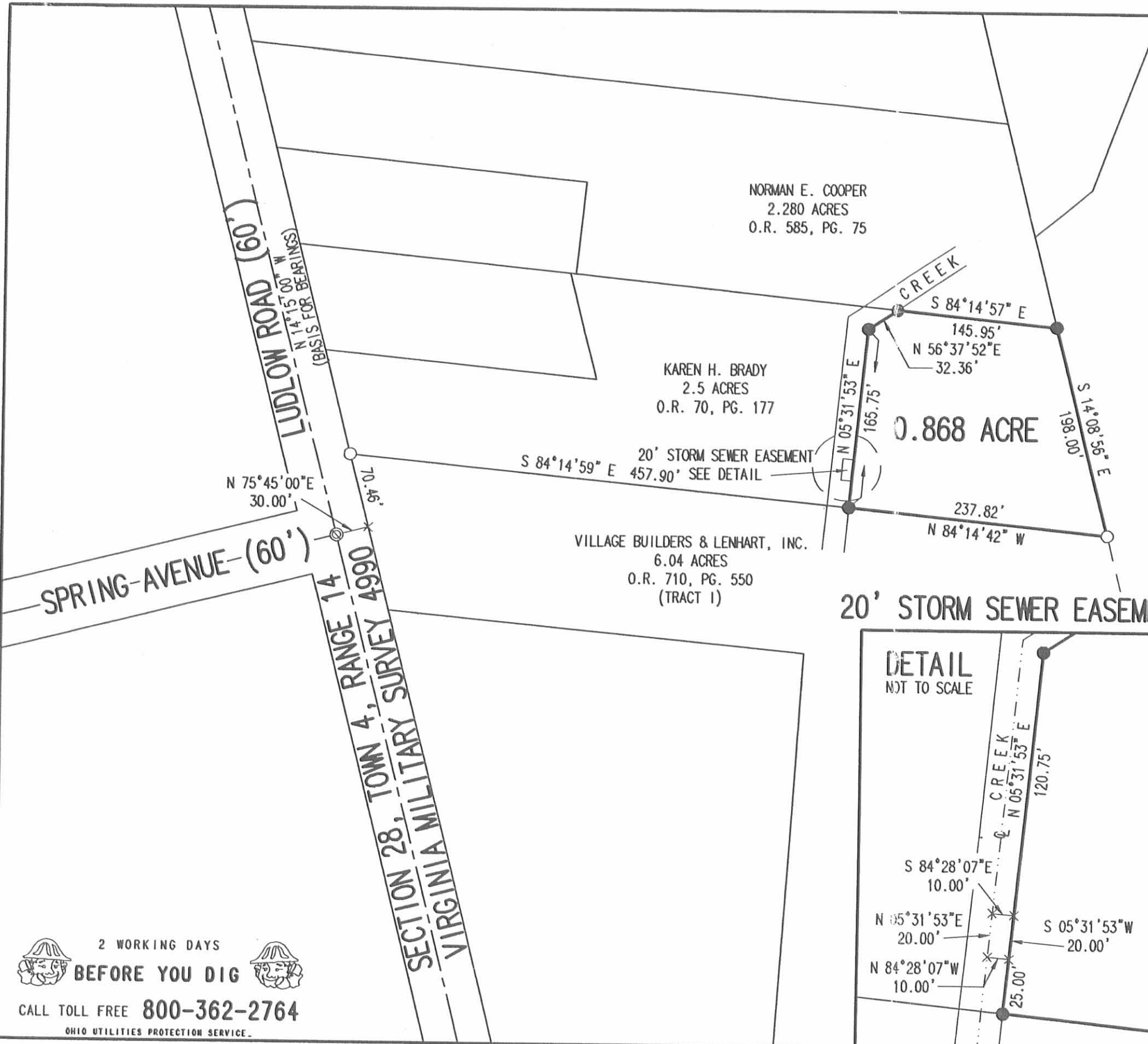
ORIGINAL STAMP IN GREEN

A handwritten signature in black ink, appearing to read 'J. Lee', is written over the typed name and title.
Jeffrey I. Lee
Professional Surveyor 6359
August 25, 2004

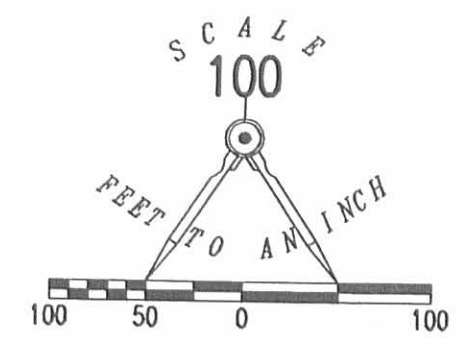
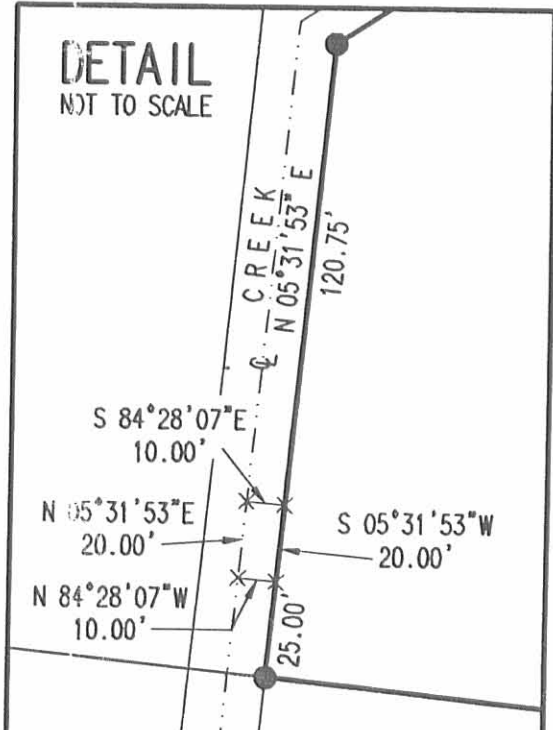
L-715



REC'D 8-31-04 SMOE



20' STORM SEWER EASEMENT



LEGEND:

- 5/8 INCH IRON ROD SET
- 5/8 INCH IRON ROD FOUND
- ⊙ 1-1/4 INCH IRON PIPE FOUND

VILLAGE BUILDERS & LENHART, INC.
8.05 ACRES
O.R. 710, PG. 550
(TRACT 111)

SURVEY OF 0.868 ACRE TRACT OUT OF THE
KAREN H. BRADY
2.5 ACRE TRACT
OFFICIAL RECORD 70, PAGE 177
VIRGINIA MILITARY SURVEY 4990
CITY OF BELLEFONTAINE
LAKE TOWNSHIP
LOGAN COUNTY, OHIO

SURVEYED BY:

Jeffrey I. Lee
JEFFREY I. LEE
PROFESSIONAL SURVEYOR 6359
AUGUST 24, 2004



ORIGINAL STAMP IN GREEN

COPYRIGHT 2004 BY:
LEE SURVEYING & MAPPING CO., INC.
117 North Madriver Street
BELLEFONTAINE, OHIO 43311
(937) 593-7335

KSR D413 715084B

L-715-3

2 WORKING DAYS
BEFORE YOU DIG
CALL TOLL FREE **800-362-2764**
OHIO UTILITIES PROTECTION SERVICE.

INDEXED ON MAP
9491 2P

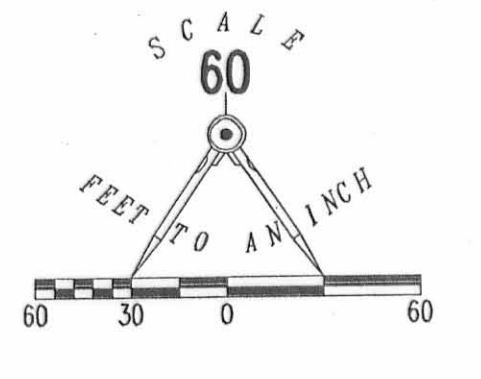
EXHIBIT B TO DECLARATION AND BYLAWS OF

LUDLOW BRIDGE CONDOMINIUMS - PHASE XV

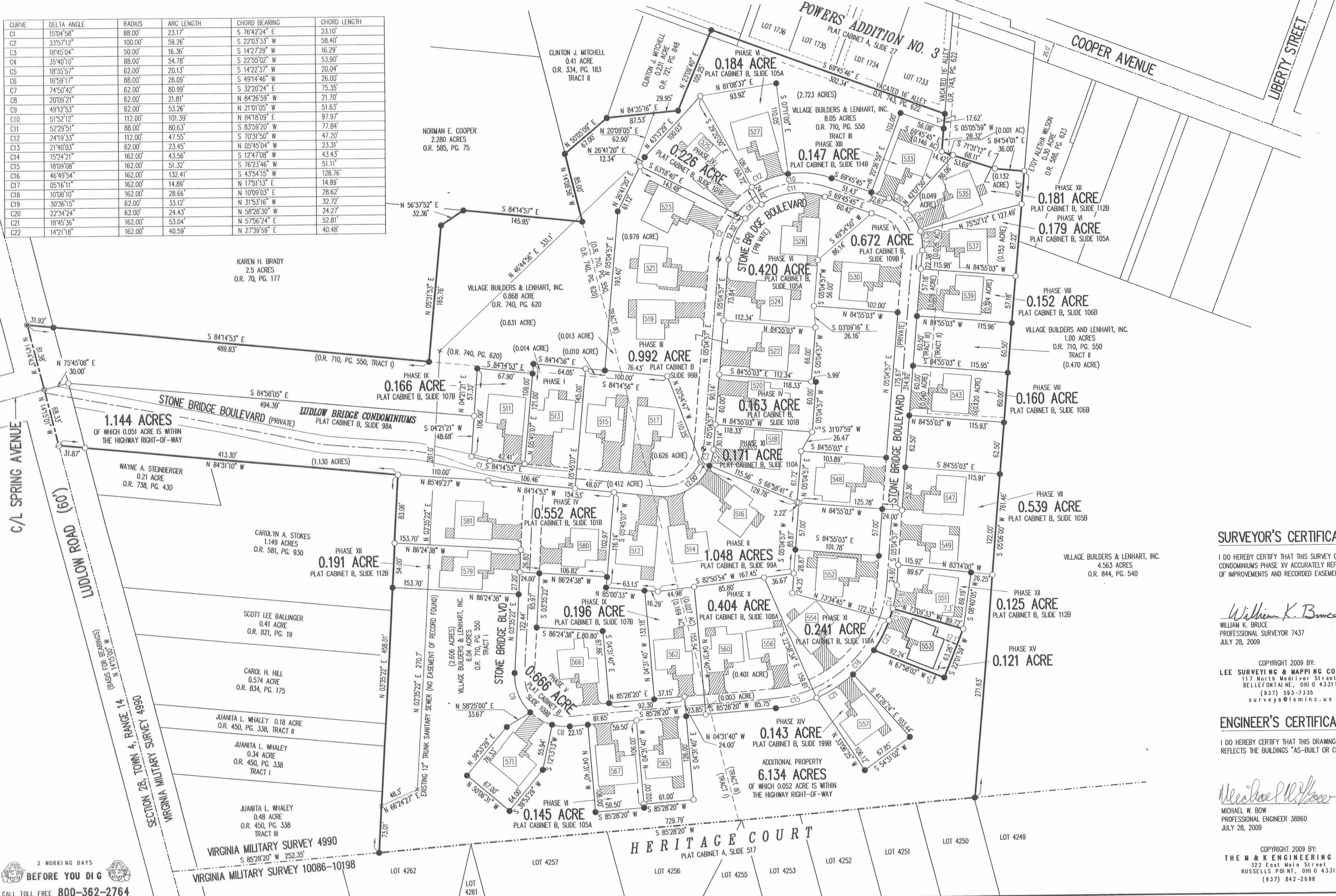
6.04 ACRE TRACT, 1.00 ACRE TRACT, 8.05 ACRE TRACT OFFICIAL RECORD 710, PAGE 550, TRACTS I, II AND III

0.868 ACRE TRACT OFFICIAL RECORD 740, PAGE 620

VIRGINIA MILITARY SURVEY 4990 CITY OF BELLEFONTAINE LAKE TOWNSHIP LOGAN COUNTY, OHIO



CURVE	DELTA ANGLE	RADIUS	ARC LENGTH	CHORD BEARING	CHORD LENGTH
C1	150°45'8"	88.00'	23.17'	S 76°42'24" E	23.10'
C2	33°57'12"	100.00'	59.26'	S 22°03'33" W	58.40'
C3	18°45'04"	50.00'	16.36'	S 14°27'29" W	16.29'
C4	35°40'10"	88.00'	54.78'	S 22°55'02" W	53.90'
C5	18°35'57"	62.00'	20.13'	S 14°22'37" W	20.04'
C6	16°59'17"	88.00'	26.09'	S 49°14'46" E	26.00'
C7	74°50'42"	62.00'	80.99'	S 32°20'24" E	75.35'
C8	20°09'21"	62.00'	21.81'	N 84°26'59" W	21.70'
C9	49°12'53"	62.00'	53.26'	N 21°01'05" W	51.63'
C10	52°29'51"	88.00'	101.39'	S 83°59'20" W	77.84'
C11	24°19'33"	112.00'	47.55'	S 70°31'50" W	47.20'
C12	21°40'03"	62.00'	23.45'	N 05°45'04" W	23.31'
C13	15°24'21"	162.00'	43.56'	S 12°47'08" W	43.43'
C14	18°09'08"	162.00'	51.32'	S 43°54'15" W	51.11'
C15	05°16'11"	162.00'	132.41'	N 17°51'13" E	128.76'
C16	10°08'10"	162.00'	28.66'	N 10°09'03" E	14.89'
C17	30°36'15"	62.00'	33.12'	N 31°53'16" W	28.62'
C18	22°34'24"	62.00'	24.43'	N 58°28'30" W	24.27'
C19	18°45'36"	162.00'	53.04'	N 57°56'24" E	52.81'
C20	14°21'18"	162.00'	40.59'	N 27°39'59" E	40.48'



- LEGEND:
- ⊙ 1-1/4 INCH IRON PIPE FOUND
 - 5/8 INCH IRON ROD SET
 - 5/8 INCH IRON ROD FOUND
 - ⊙ MAG NAIL SET
 - ⊙ MAG NAIL FOUND
 - ⊙ RAILROAD SPIKE SET
 - ⊙ RAILROAD SPIKE FOUND
 - ▨ LIMITED COMMON AREA
 - ⊠ UNIT NUMBER

- NOTES:
- EASEMENTS IF SHOWN ARE AS PROVIDED BY DEVELOPER. THE SURVEYOR DID NOT SEARCH FOR ADDITIONAL EASEMENTS.
 - THE WORD "CERTIFY" IS INTENDED TO BE AS DEFINED IN OHIO ADMINISTRATIVE CODE 4733-35-04(C).
 - BUILDING HEIGHT FROM PEAK OF ROOF TO GROUND: UNIT 553 IS 21.2'

SURVEYOR'S CERTIFICATION:

I DO HEREBY CERTIFY THAT THIS SURVEY OF LUDLOW BRIDGE CONDOMINIUMS PHASE XV ACCURATELY REFLECTS THE LOCATION OF IMPROVEMENTS AND RECORDED EASEMENTS.

William K. Bruce
 WILLIAM K. BRUCE
 PROFESSIONAL SURVEYOR 7437
 JULY 26, 2009

COPYRIGHT 2009 BY:
 LEE SURVEYING & MAPPING CO., INC.
 117 North Madison Street
 BELLEFONTAINE, OHIO 43311
 (937) 593-7335
 surveys@lsmcinc.us

ENGINEER'S CERTIFICATION:

I DO HEREBY CERTIFY THAT THIS DRAWING ACCURATELY REFLECTS THE BUILDINGS "AS-BUILT OR CONSTRUCTED".

Michael W. Bow
 MICHAEL W. BOW
 PROFESSIONAL ENGINEER 38860
 JULY 28, 2009

COPYRIGHT 2009 BY:
 THE M & K ENGINEERING CO.
 372 East Main Street
 RUSSELLS POINT, OHIO 43311
 (937) 842-2698

PRE-APPROVAL *Jan C. Ho* 8-14-09

PLAT CHECKED *Jan C. Ho* 8-14-09

TRANSFERRED THIS 14th DAY OF August, 2009

AUDITOR, LOGAN COUNTY, OHIO *Michael E. Guder*

RECORDED IN PLAT CABINET B, SLIDE 120A

RECEIVED FOR RECORD AT 9:57 O'CLOCK A.M.

THIS 14th DAY OF August, 2009

Linda Hanson
 RECORDER, LOGAN COUNTY, OHIO

2 WORKING DAYS BEFORE YOU DIG
 CALL TOLL FREE 800-362-2764
 OHIO UTILITIES PROTECTION SERVICE

PLAT CABINET B SLIDE 125A

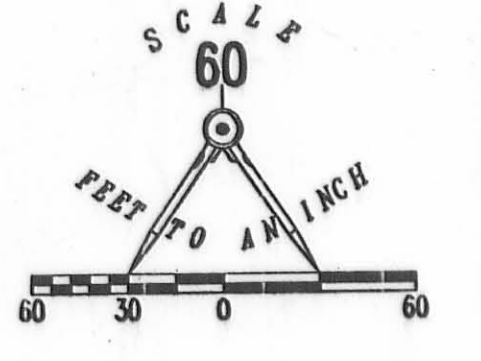
EXHIBIT B TO DECLARATION AND BYLAWS OF

LUDLOW BRIDGE CONDOMINIUMS - PHASE XVIII

6.04 ACRE TRACT, 1.00 ACRE TRACT, 8.05 ACRE TRACT OFFICIAL RECORD 710, PAGE 550, TRACTS I, II AND III

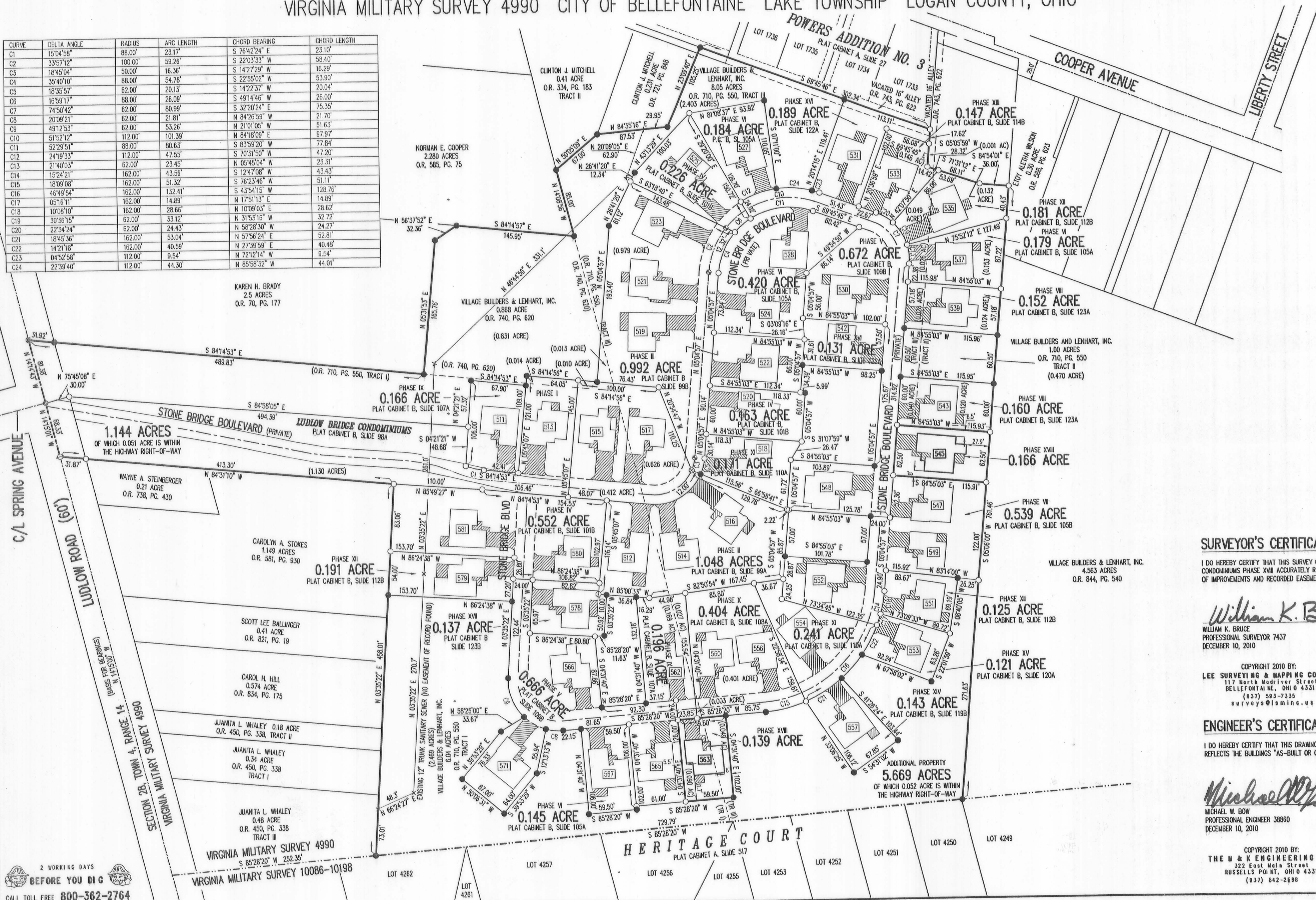
0.868 ACRE TRACT OFFICIAL RECORD 740, PAGE 620

VIRGINIA MILITARY SURVEY 4990 CITY OF BELLEFONTAINE LAKE TOWNSHIP LOGAN COUNTY, OHIO



CURVE	DELTA ANGLE	RADIUS	ARC LENGTH	CHORD BEARING	CHORD LENGTH
C1	15°04'38"	88.00'	23.17'	S 76°42'24" E	23.10'
C2	33°57'12"	100.00'	59.26'	S 22°03'33" W	58.40'
C3	18°45'04"	50.00'	16.36'	S 14°27'29" W	16.29'
C4	35°40'10"	88.00'	54.78'	S 22°55'02" W	53.90'
C5	18°35'57"	62.00'	20.13'	S 14°22'37" W	20.04'
C6	16°59'17"	88.00'	26.09'	S 49°14'46" W	26.00'
C7	74°50'42"	62.00'	80.99'	S 32°20'24" E	75.35'
C8	20°09'21"	62.00'	21.81'	N 84°26'59" W	21.70'
C9	49°12'53"	62.00'	53.26'	N 21°01'05" W	51.63'
C10	51°52'12"	112.00'	101.39'	N 84°18'09" E	97.97'
C11	52°29'51"	62.00'	80.63'	S 83°59'20" W	77.84'
C12	24°19'33"	112.00'	47.55'	S 70°31'50" W	47.20'
C13	21°40'03"	62.00'	23.45'	N 05°45'04" W	23.31'
C14	15°24'21"	162.00'	43.56'	S 12°47'08" W	43.43'
C15	18°09'08"	162.00'	51.32'	S 76°23'46" W	51.11'
C16	46°49'54"	162.00'	132.41'	S 43°54'15" W	128.76'
C17	05°16'11"	162.00'	14.89'	N 17°51'13" E	14.89'
C18	10°08'10"	162.00'	28.66'	N 10°09'03" E	28.62'
C19	30°36'15"	62.00'	33.12'	N 31°53'16" W	32.72'
C20	22°34'24"	62.00'	24.43'	N 58°28'30" W	24.27'
C21	18°45'36"	162.00'	53.04'	N 57°56'24" E	52.81'
C22	14°21'18"	162.00'	40.59'	N 27°30'59" E	40.48'
C23	04°52'58"	112.00'	9.54'	N 72°21'4" W	9.54'
C24	22°39'40"	112.00'	44.30'	N 85°38'32" W	44.01'

- LEGEND:
- 1-1/4 INCH IRON PIPE FOUND
 - 5/8 INCH IRON ROD SET
 - 5/8 INCH IRON ROD FOUND
 - MAG NAIL SET
 - MAG NAIL FOUND
 - RAILROAD SPIKE SET
 - RAILROAD SPIKE FOUND
 - ▨ LIMITED COMMON AREA
 - ▭ UNIT NUMBER



KAREN H. BRADY
2.5 ACRES
O.R. 70, PG. 177

WAYNE A. STEINBERGER
0.21 ACRE
O.R. 738, PG. 430

CAROLYN A. STOKES
1.149 ACRES
O.R. 581, PG. 930

SCOTT LEE BALLINGER
0.41 ACRE
O.R. 821, PG. 19

CAROL H. HILL
0.574 ACRE
O.R. 834, PG. 175

JUANITA L. WHALEY
0.18 ACRE
O.R. 450, PG. 338, TRACT II

JUANITA L. WHALEY
0.34 ACRE
O.R. 450, PG. 338
TRACT I

JUANITA L. WHALEY
0.48 ACRE
O.R. 450, PG. 338
TRACT III

- NOTES:
- EASEMENTS IF SHOWN ARE AS PROVIDED BY DEVELOPER. THE SURVEYOR DID NOT SEARCH FOR ADDITIONAL EASEMENTS.
 - THE WORD "CERTIFY" IS INTENDED TO BE AS DEFINED IN OHIO ADMINISTRATIVE CODE 4733-35-04(C).
 - BUILDING HEIGHT FROM PEAK OF ROOF TO GROUND:
UNIT 545 IS 20.0'
UNIT 563 IS 20.35'

SURVEYOR'S CERTIFICATION:

I DO HEREBY CERTIFY THAT THIS SURVEY OF LUDLOW BRIDGE CONDOMINIUMS PHASE XVIII ACCURATELY REFLECTS THE LOCATION OF IMPROVEMENTS AND RECORDED EASEMENTS.

William K. Bruce
WILLIAM K. BRUCE
PROFESSIONAL SURVEYOR 7437
DECEMBER 10, 2010

COPYRIGHT 2010 BY:
LEE SURVEYING & MAPPING CO., INC.
117 North Medriver Street
BELLEFONTAINE, OHIO 43311
(937) 593-7335
surveys@lsmcinc.us

ENGINEER'S CERTIFICATION:

I DO HEREBY CERTIFY THAT THIS DRAWING ACCURATELY REFLECTS THE BUILDINGS "AS-BUILT OR CONSTRUCTED".

Michael W. Bow
MICHAEL W. BOW
PROFESSIONAL ENGINEER 38860
DECEMBER 10, 2010

COPYRIGHT 2010 BY:
THE M & K ENGINEERING CO.
322 East Main Street
RUSSELLS POINT, OHIO 43311
(937) 842-2688

PRE-APPROVAL *Joseph M. Varty*
PLAT CHECKED *Joseph M. Varty* 12-14-10
TRANSFERRED THIS 15th DAY OF DECEMBER, 2010
AUDITOR, LOGAN COUNTY, OHIO
RECORDED IN PLAT CABINET B, SLIDE 125A
RECEIVED FOR RECORD AT 1:35 O'CLOCK P.M.
THIS 15th DAY OF December, 2010
Linda L. Hanson
RECORDER, LOGAN COUNTY, OHIO

2 WORKING DAYS
BEFORE YOU DIG
CALL TOLL FREE 800-362-2764
OHIO UTILITIES PROTECTION SERVICE

Received 7-14-11 09:56

Lee Surveying and Mapping Co., Inc.

Land Surveys • Topography • Subdivisions • Construction Layout

117 N. Madriver St.
Bellefontaine OH 43311



Phone: (937) 593-7335
Fax: (937) 593-7444
surveys@lsminc.us

VILLAGE BUILDERS & LENHART, INC. 0.180 ACRE (FOR MORTGAGE PURPOSES ONLY)

Lying in Virginia Military Survey 4990, City of Bellefontaine, Lake Township, Logan County, Ohio.

Being out of the Village Builders & Lenhart, Inc., original 8.05 acre tract as deeded and described in Official Record 710, Page 550, Tract III of the Logan County Records of Deeds and being more particularly described as follows:

Beginning on a 5/8 inch iron rod found on the southwest corner of the 0.189 acre portion of Ludlow Bridge Condominiums – Phase XVI (Plat Cabinet B, Slide 122A), on a northerly line of the 0.672 acre portion of Ludlow Bridge Condominiums – Phase V (Plat Cabinet B, Slide 109B) and on the north right-of-way of Ludlow Bridge Boulevard (a 24 feet wide private street).

THENCE, with the said 0.672 acre portion of Ludlow Bridge Condominiums – Phase V and the north right-of-way of Ludlow Bridge Boulevard, a curve to the left, having a central angle of 22°-39'-40", a radius of 112.00 feet, an arc length of 44.30 feet, a chord bearing N 85°-58'-32"W, a distance of 44.01 feet to a 5/8 inch iron rod found on the southeast corner of the 0.184 acre portion of Ludlow Bridge Condominiums – Phase VI (Plat Cabinet B, Slide 105A).

THENCE, with the east line of said 0.184 acre portion of Ludlow Bridge Condominiums – Phase VI, N 07°-11'-00"W, a distance of 110.05 feet to a 5/8 inch iron rod found.

THENCE, S 89°-51'-46"E, a distance of 98.97 feet to a 5/8 inch iron rod found on the center-line of a vacated alley (O.R. 743, Pg. 622).

THENCE, with the west line of the aforesaid 0.189 acre portion of Ludlow Bridge Condominiums – Phase XVI, S 20°-14'-15"W, a distance of 119.41 feet to the point of beginning.

Containing 0.180 acre.

The basis for bearings is the west line of the 0.189 acre portion of Ludlow Bridge Condominiums – Phase XVI (Plat Cabinet B, Slide 122A), being S 20°-14'-15"W, and all other bearings are from angles and distances measured in a field survey by Lee Surveying and Mapping Co., Inc. on October 20, 2009.



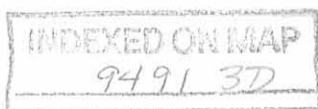
ORIGINAL STAMP IN GREEN

Description prepared by:

A handwritten signature in black ink that reads 'William K. Bruce'.

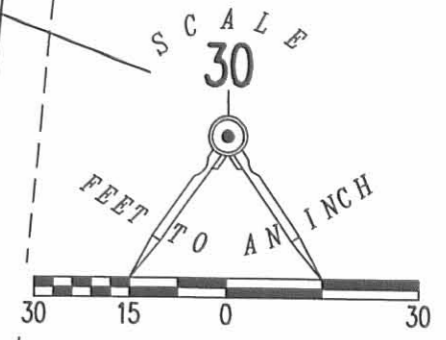
William K. Bruce
Professional Surveyor 7437
June 23, 2011

7150611

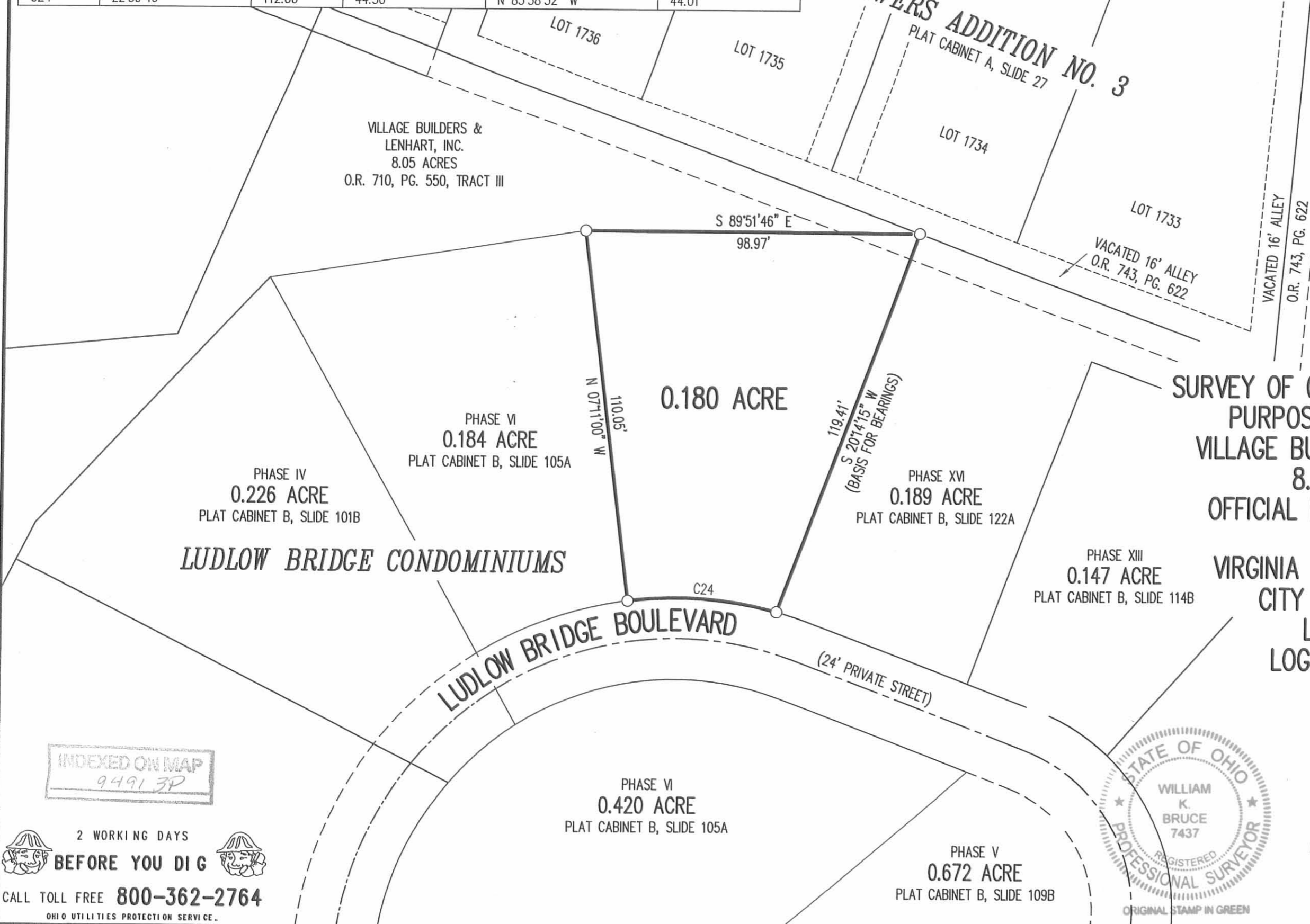


CURVE	DELTA ANGLE	RADIUS	ARC LENGTH	CHORD BEARING	CHORD LENGTH
C24	22°39'40"	112.00'	44.30'	N 85°58'32" W	44.01'

POWERS ADDITION NO. 3
 PLAT CABINET A, SLIDE 27



VILLAGE BUILDERS &
 LENHART, INC.
 8.05 ACRES
 O.R. 710, PG. 550, TRACT III

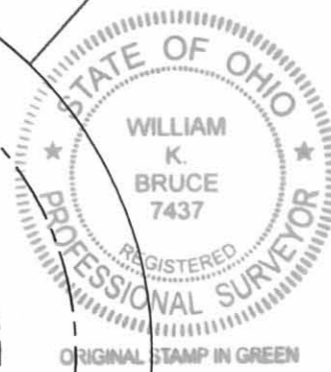


SURVEY OF 0.180 ACRE FOR MORTGAGE PURPOSES ONLY OUT OF THE VILLAGE BUILDERS & LENHART, INC. 8.05 ACRE TRACT OFFICIAL RECORD 710, PAGE 550 TRACT III VIRGINIA MILITARY SURVEY 4990 CITY OF BELLEFONTAINE LAKE TOWNSHIP LOGAN COUNTY, OHIO

SURVEYED BY:

William K. Bruce

WILLIAM K. BRUCE
 PROFESSIONAL SURVEYOR 7437
 JUNE 23, 2011



COPYRIGHT 2011 BY:
LEE SURVEYING & MAPPING CO., INC.
 117 North Madriver Street
 BELLEFONTAINE, OHIO 43311
 (937) 593-7335
 surveys@lsminc.us
 KSS LUDLOWBRIDGE 7150611 L-715-3

INDEXED ON MAP
 94913P

2 WORKING DAYS
BEFORE YOU DIG
 CALL TOLL FREE **800-362-2764**
 OHIO UTILITIES PROTECTION SERVICE.

9-25-12 smy ok

Lee Surveying and Mapping Co., Inc.

Land Surveys • Topography • Subdivisions • Construction Layout

117 N. Madriver St.
Bellefontaine OH 43311



Phone: (937) 593-7335
Fax: (937) 593-7444
surveys@lsminc.us

EXHIBIT A LUDLOW BRIDGE CONDOMINIUMS – PHASE XXI 0.155 ACRE

Lying in Virginia Military Survey 4990, City of Bellefontaine, Lake Township, Logan County, Ohio.

Being out of the Village Builders & Lenhart, Inc., original 6.04 acre tract as deeded and described in Official Record 710, Page 550, Tract I of the Logan County Records of Deeds and being more particularly described as follows:

Beginning on a 5/8 inch iron rod found on the southwest corner of the 0.196 acre portion of Ludlow Bridge Condominiums – Phase IX (Plat Cabinet B, Slide 107A), on the north right-of-way of Stone Bridge Boulevard (a 24 feet wide private street).

THENCE, with the north right-of-way of Stone Bridge Boulevard and a northerly line of the 0.666 acre portion of Ludlow Bridge Condominiums – Phase V (Plat Cabinet B, Slide 109B), S 85°-28'-20"W, a distance of 55.15 feet to a 5/8 inch iron rod found.

THENCE, with an easterly line of the said 0.666 acre portion of Bridge Condominiums – Phase V, N 04°-31'-40"W, a distance of 87.86 feet to a 5/8 inch iron rod found.

THENCE, with the lines of the 0.137 acre portion of Ludlow Bridge Condominiums – Phase XVII (Plat Cabinet B, Slide 123B), the following two courses:

N 85°-28'-20"E, a distance of 11.63 feet to a 5/8 inch iron rod found.

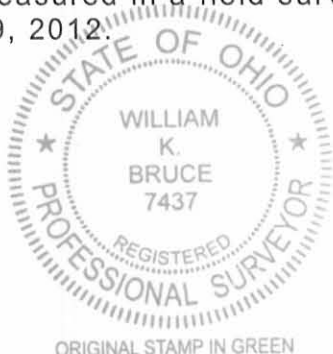
N 03°-35'-22"E, a distance of 50.92 feet to a 5/8 inch iron rod found.

THENCE, with the south line of the 1.048 acre portion of Ludlow Bridge Condominiums – Phase II (Plat Cabinet B, Slide 99A), S 85°-00'-33"E, a distance of 36.84 feet to a 5/8 inch iron rod found.

THENCE, with the west line of the aforesaid 0.196 acre portion of Ludlow Bridge Condominiums – Phase IX, S 04°-31'-40"E, a distance of 132.18 feet to the point of beginning.

Containing 0.155 acre.

The basis for bearings is the west line of Virginia Military Survey 4990, being N 14°-15'-00"W, and all other bearings are from angles and distances measured in a field survey by Lee Surveying and Mapping Co., Inc. on September 19, 2012.

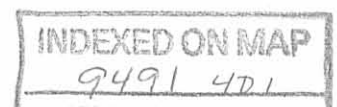


ORIGINAL STAMP IN GREEN

Description prepared by:

William K. Bruce

William K. Bruce
Professional Surveyor 7437
September 20, 2012



715LBC-Condo21

Lee Surveying and Mapping Co., Inc.

Land Surveys • Topography • Subdivisions • Construction Layout

117 N. Madriver St.
Bellefontaine OH 43311



Phone: (937) 593-7335
Fax: (937) 593-7444
surveys@lsminc.us

EXHIBIT A LUDLOW BRIDGE CONDOMINIUMS – PHASE XXI 0.205 ACRE

Lying in Virginia Military Survey 4990, City of Bellefontaine, Lake Township, Logan County, Ohio.

Being out of the Village Builders & Lenhart, Inc., original 6.04 acre tract as deeded and described in Official Record 710, Page 550, Tract I of the Logan County Records of Deeds and being more particularly described as follows:

Beginning on a 5/8 inch iron rod found on the southeast corner of the 0.191 acre portion of Ludlow Bridge Condominiums – Phase XII (Plat Cabinet B, Slide 112B), on the west right-of-way of Stone Bridge Boulevard (a 24 feet wide private street).

THENCE, with the west right-of-way of Stone Bridge Boulevard, S 03°-35'-22"W, a distance of 58.00 feet to a 5/8 inch iron rod set.

THENCE, N 86°-24'-38"W, a distance of 153.70 feet to a 5/8 inch iron rod set.

THENCE, with the east lines of the Colleen Ray 0.41 acre tract (O.R. 984, Pg. 747) and the Carolyn A. Stokes 1.149 acre tract (O.R. 581, Pg. 930), N 03°-35'-22"E, a distance of 58.00 feet to a 5/8 inch iron rod found on the southwest corner of the aforesaid 0.191 acre portion of Ludlow Bridge Condominiums – Phase XII.

THENCE, with the south line of the said 0.191 acre portion of Ludlow Bridge Condominiums – Phase XII, S 86°-24'-38"E, a distance of 153.70 feet to the point of beginning.

Containing 0.205 acre.

The basis for bearings is the west line of Virginia Military Survey 4990, being N 14°-15'-00"W, and all other bearings are from angles and distances measured in a field survey by Lee Surveying and Mapping Co., Inc. on September 19, 2012.

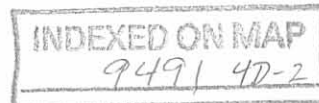
Description prepared by:



ORIGINAL STAMP IN GREEN

William K. Bruce
Professional Surveyor 7437
September 20, 2012

715LBC-Condo21



10-7-2021



Bill Thayer
Page 2 of 2
May 10, 2021

LEGAL DESCRIPTION

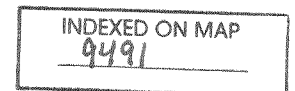
Being all of the remainder of an 8.05 acre parcel, owned by Village Builders & Lenhart, Inc., as deeded and described in O.R. 710, Page 550, Tract III, located the Virginia Military Survey #4990, City of Bellefontaine, Lake Township, Logan County, Ohio, more particularly described as followed:

BEGINNING at a #5 Rebar set at the Northeast corner of Ludlow Bridge Condominiums Phase XXII (P.C. B, Slide 129B); thence the following courses:

1. On the South line of Stone Bridge Blvd. on a curve to the left having a radius of 162.00', an arc length of 42.55' (Chord Bearing = N 74°- 58' - 49" E, a Chord Distance = 42.43', and a Delta Angle = 15°- 02' - 59") to a #5 Rebar set at the Northwest corner of Ludlow Bridge Condominiums Phase XIV (P.C. B, Slide 119B);
2. S 32°- 58' - 37" E, on the West line of Ludlow Bridge Condominiums Phase XIV (P.C. B, Slide 119B), 106.12' to an existing #5 Rebar at the Southwest corner of Ludlow Bridge Condominiums Phase XIV (P.C. B, Slide 119B);
3. S 80°- 06' - 09" E on a South line of Ludlow Bridge Condominiums Phase XXIX (P.C. B, Slide 141A), 137.18' to an existing #5 Rebar on the West line of the Village Builders & Lenhart, Inc. Property as described in O.R. 844, Pg. 540 (4.563 Acres per deed);
4. S 05°- 13' - 48" W on the West line of said Village Builders & Lenhart, Inc. Property, 12.17' to an existing #5 Rebar on the North line of Heritage Court Subdivision (P.C. A, Slide 517);
5. S 85°- 36' - 08" W on the North line of Heritage Court Subdivision (P.C. A, Slide 517), 216.30' to an existing #5 Rebar at the Southeast Corner of Ludlow Bridge Condominiums Phase XXIX (P.C. B, Slide 141A);
6. N 07°- 28' - 44" W on an East line of Ludlow Bridge Condominiums Phase XXIX (P.C. B, Slide 141A) and Ludlow Bridge Condominiums Phase XXII (P.C. B, Slide 129B), 131.43' to the POINT OF BEGINNING, passing an existing #5 Rebar at 27.04'.

The above-described parcel of land contains 0.314 acres, more or less, of which 0.000 acres are occupied by road right-of-way. This parcel is subject to all legal highways and easements of record.

The bearings for this survey are based on the Ohio State Plane North Coordinate System. This legal description and the accompanying plat represent an actual boundary survey conducted under the direct supervision of Brad J. Core #8004 on May 10, 2021. All markers called for above are in place.



10-7-2021

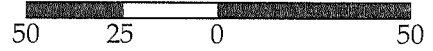
APPROVED

Survey of Parcel #17-092-13-07-007-000, located in Virginia Military Survey #4990, City of Bellefontaine, Lake Township, Logan County, Ohio.

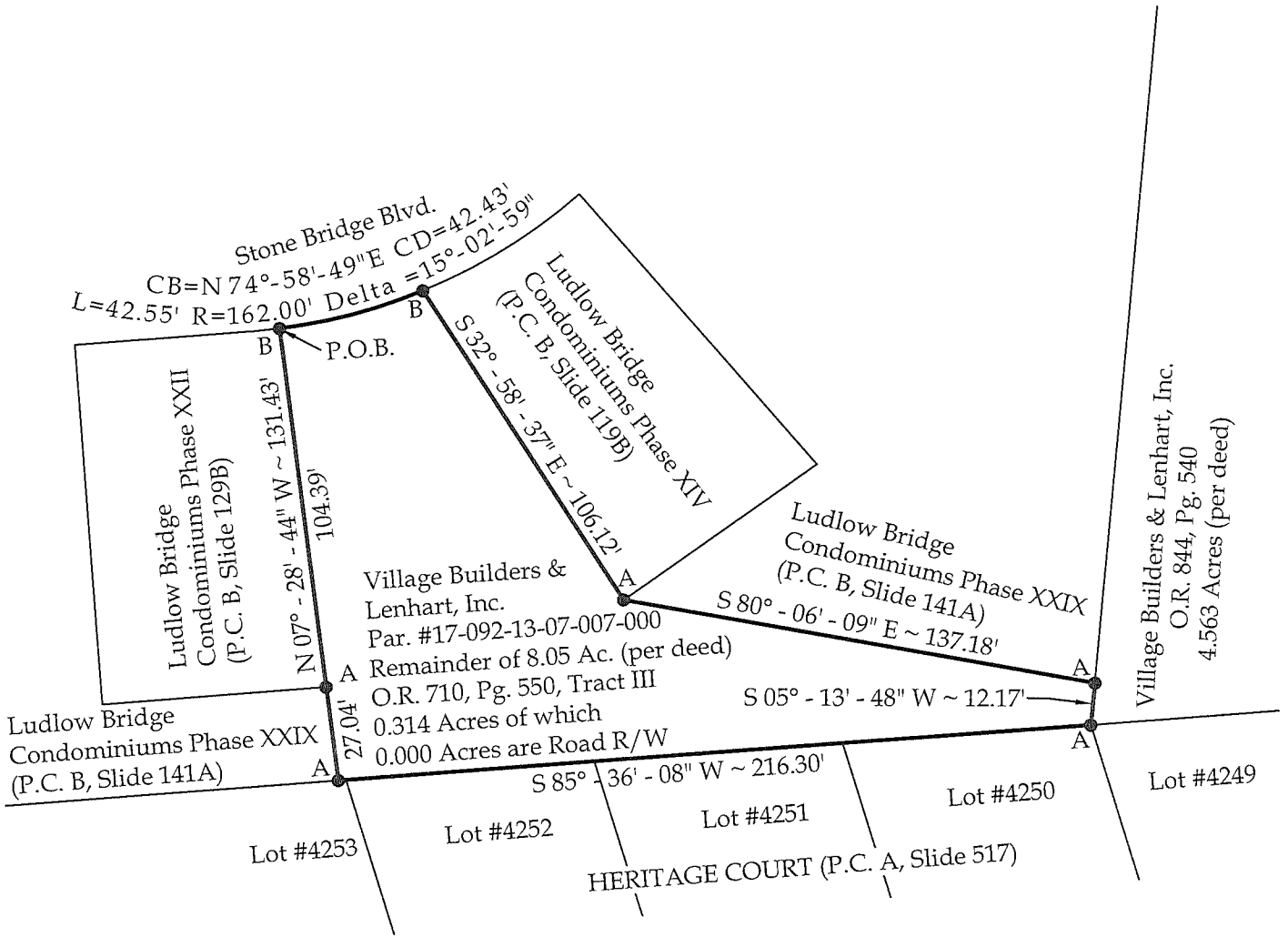
Prior Deed Referenced in O.R. 710, Pg. 550.



SCALE: 1" = 50'



GRAPHIC SCALE



Legend

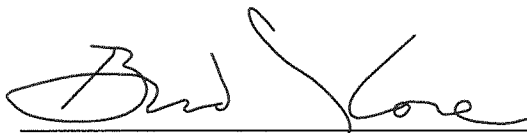
- A = Existing #5 Rebar
- B = Set #5 Rebar




Note:
All distances shown are measured unless otherwise noted.

Basis of Bearings:
The Ohio State Plane North Coordinate System.

This plat represents an actual boundary survey completed under my direct supervision on May 10, 2021.


 Brad J. Core, P.S. #8004

CORE CONSULTING  201 N. Broadway St.
 Spencerville, OH 45887
 Phone/Fax: 419-647-6163
 A Division of Materials Testing, Inc.

CLIENT: Bill Thayer

SURVEYED BY: M.E.Y.	DATE: 5-10-2021	DRAWN BY: J.R.S.	CHECKED BY: B.J.C.
SCALE: 1" = 50'		PAGE OF PAGES: 1	2

INDEXED ON MAP 9491