

**LEGEND:**

- ⊕ 1 INCH IRON PIPE FOUND
- ⊙ 3/4 INCH IRON ROD FOUND
- 5/8 INCH IRON ROD FOUND
- 5/8 INCH BY 30 INCH IRON ROD SET WITH PLASTIC I.D. CAP STAMPED "P.S. 8533"

R/W = RIGHT-OF-WAY

C/L = CENTER-LINE

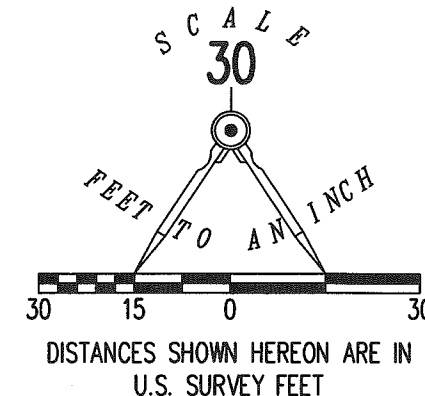
N.T.S. = NOT TO SCALE

**DEED & SURVEY REFERENCES:**

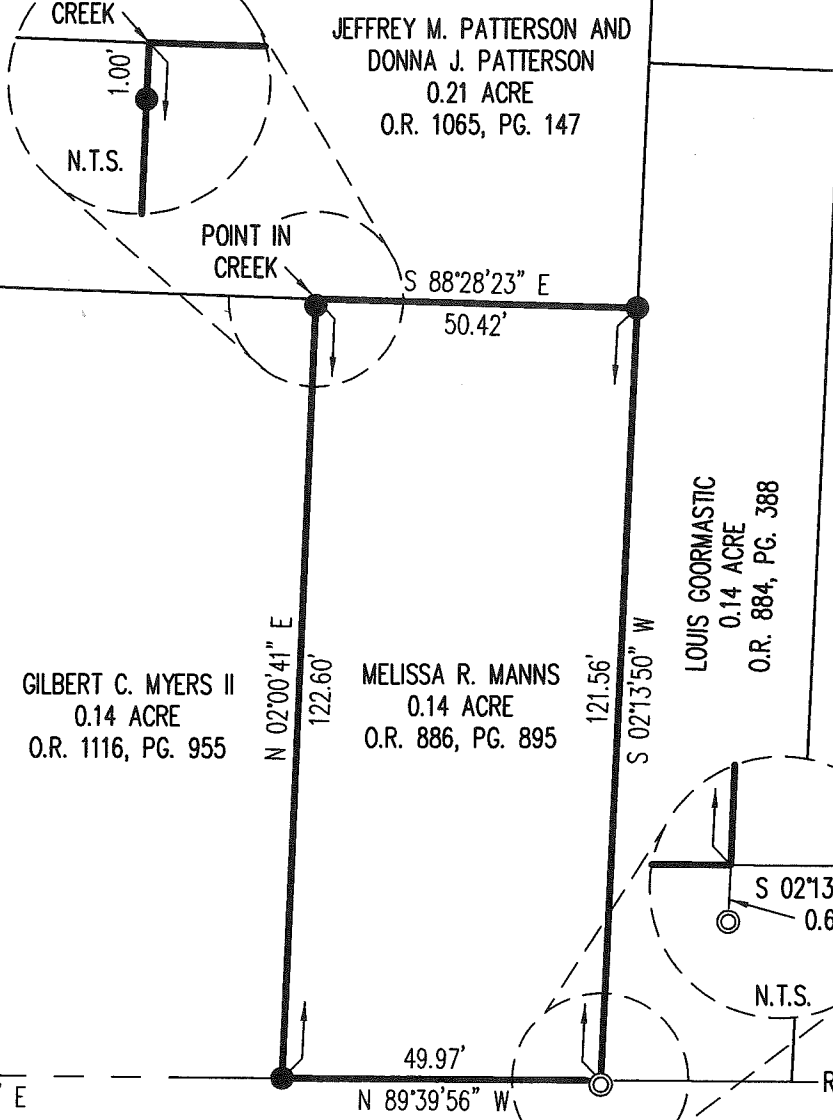
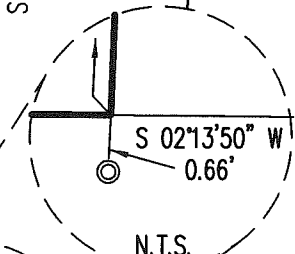
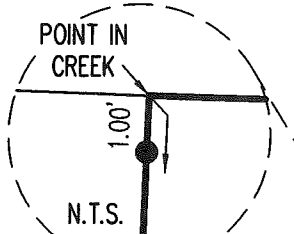
O.R. 884, PG. 388      O.R. 886, PG. 895

O.R. 1065, PG. 147      O.R. 1116, PG. 955

LOGAN COUNTY ENGINEER'S MAP ROOM  
 FILES 1911, 2228, 6870 AND 6869



PARK STREET (40')



**RETRACEMENT SURVEY OF THE  
 MELISSA R. MANNS  
 0.14 ACRE TRACT  
 OFFICIAL RECORD 886, PAGE 895  
 SECTION 35, TOWN 4, RANGE 14  
 MIAMI RIVERS SURVEY  
 CITY OF BELLEFONTAINE  
 LAKE TOWNSHIP  
 LOGAN COUNTY, OHIO**

SURVEYED BY:

*Daniel A. Neer*  
 DANIEL A. NEER  
 PROFESSIONAL SURVEYOR NO. 8533  
 NOVEMBER 2, 2018

COPYRIGHT 2018 BY:  
**LEE SURVEYING & MAPPING CO.**  
 117 North Madriver Street  
 BELLEFONTAINE, OHIO 43311  
 (937) 593-7335  
 WWW.LEE-SURVEYING.COM  
 surveys@lee-surveying.com  
 KSS D1018 64481018 L-6448-3

THIS SURVEY WAS PREPARED IN THE ABSENCE OF  
 A COMPLETE AND ACCURATE TITLE SEARCH AND  
 DOES NOT GUARANTEE TITLE.

2 WORKING DAYS  
**BEFORE YOU DIG**  
 CALL TOLL FREE **800-362-2764**  
 OHIO UTILITIES PROTECTION SERVICE.

**BASIS FOR BEARINGS:**  
 THE BASIS FOR BEARINGS, SHOWN HEREON,  
 IS AN ASSUMED BEARING FOR THE NORTH LINE OF  
 EAST SANDUSKY AVENUE, BEING S 89°39'56" W

INDEXED ON MAP  
 9725