

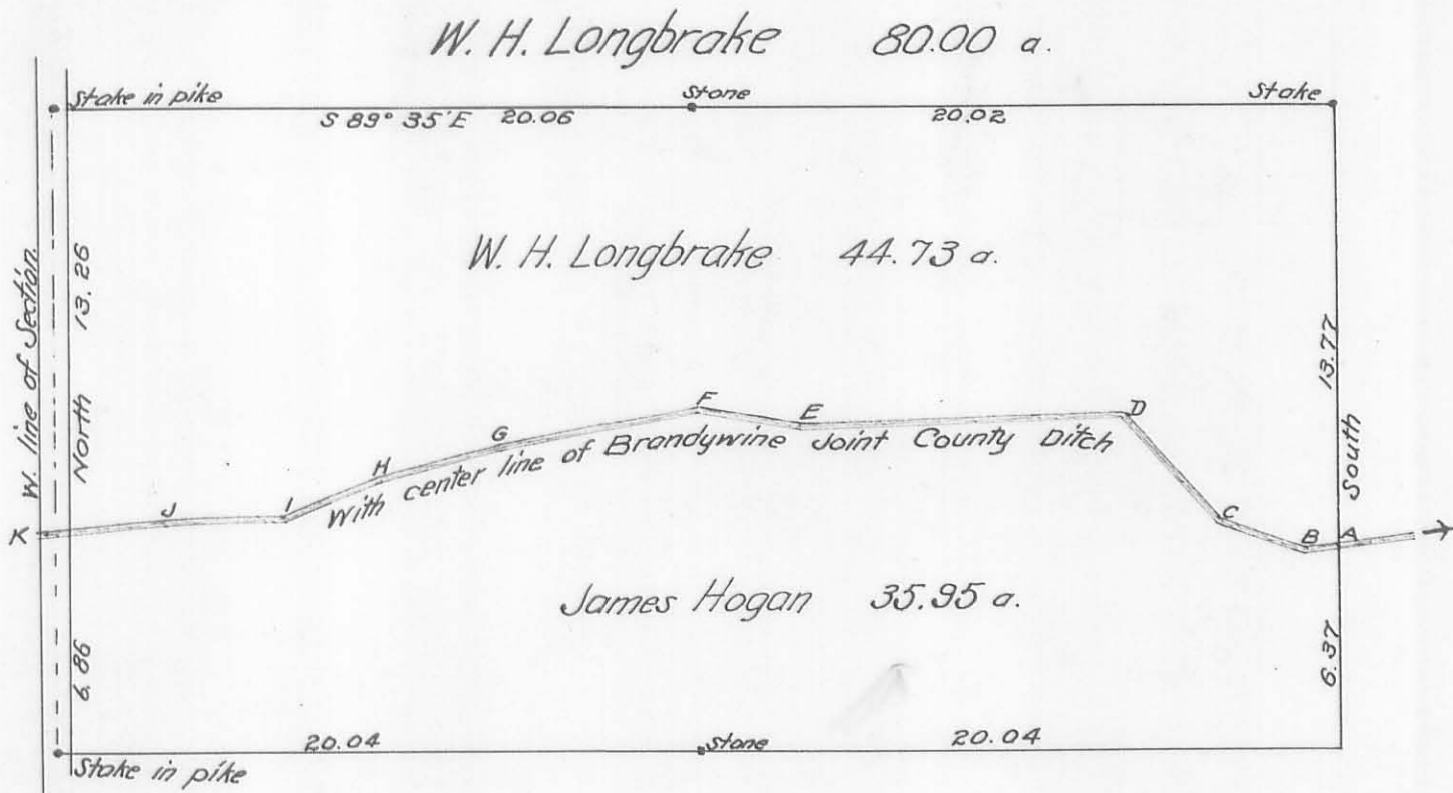
Surveyed for
W. H. Longbrake & *James Hogan*

Pt. Sec. 29, T. 7, R. 8

Bloomfield Township

Feb. 25, 1907

(160)



— Description — along line of Brandywine Ditch —

A. to B,	S 87½ W,	1.02 chains
B to C,	N 72¼ W,	2.75 "
C to D,	N 43 W,	4.56 "
D to E,	S 88½ W,	10.22 "
E to F,	N 81 W,	3.36 "
F to G,	S 79½ W,	6.48 "
G to H,	S 75½ W,	3.57 "
H to I,	S 69¾ W,	3.22 "
I to J,	S 89¼ W,	3.70 "
J to K,	S 83 W,	3.34 "

John Prince
H. Hodge Longbrake } *ch. crs.*