

Shelby Co.

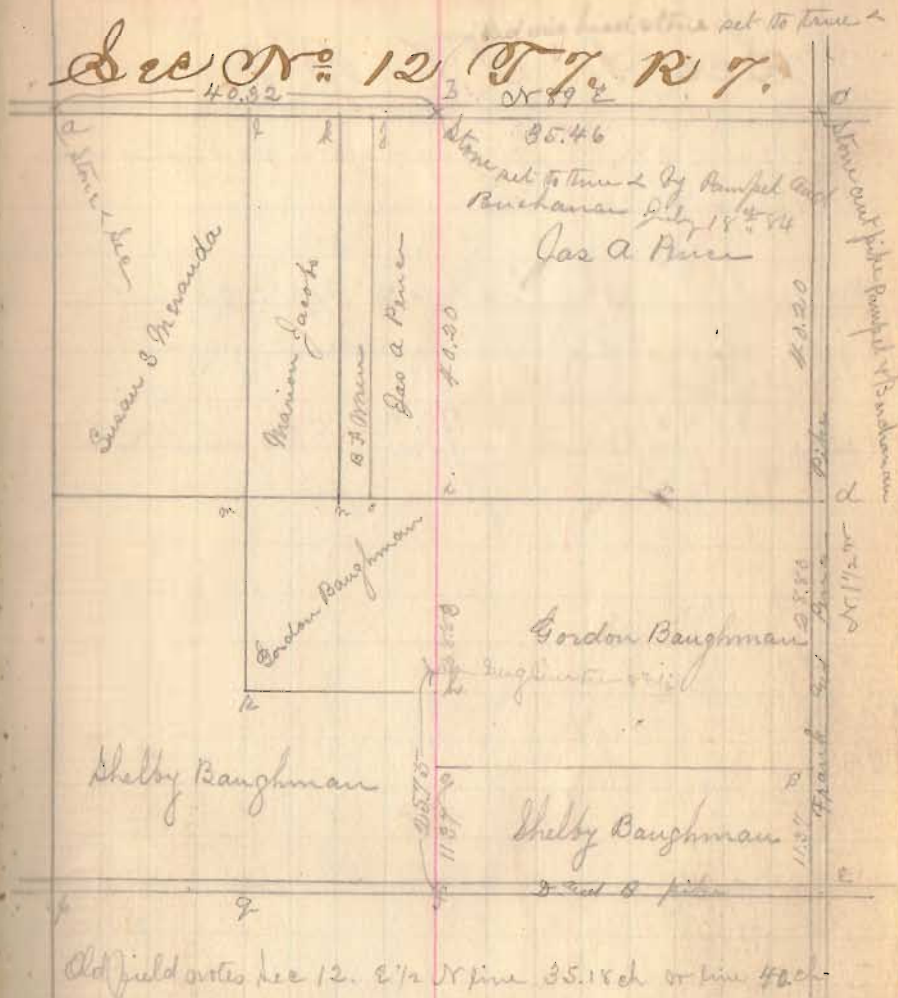
Sec No 12 T7 R7.

11.37

11.37 ch from stone at a east end
 toward C; at 40.28 ch stone supposed & not known
 at 75.66 ch stake set by Pampel on transit line for
 N line Sec 12
 at 75.78 ch center Frank² of Pence pike
 Course N line Sec 12, S 89 W
 Find stake set for N line at C to be used for north line
 Sec 12. Run from stone at A on line to stake at C
 N 89 E 40.32 to post true corner in E line being
 N 1/2 or 18" from old land corner stone, put this stone
 to true & is N 18" + E 4 inches
 Set monument to mark B at N 1/2 or 20 feet from
 corner stone at B, monument marked this

N side S1 T7 R7 S. side S12 E Logan or Shelby

Sec No 12 T7 R7.



INDEXED ON MAP