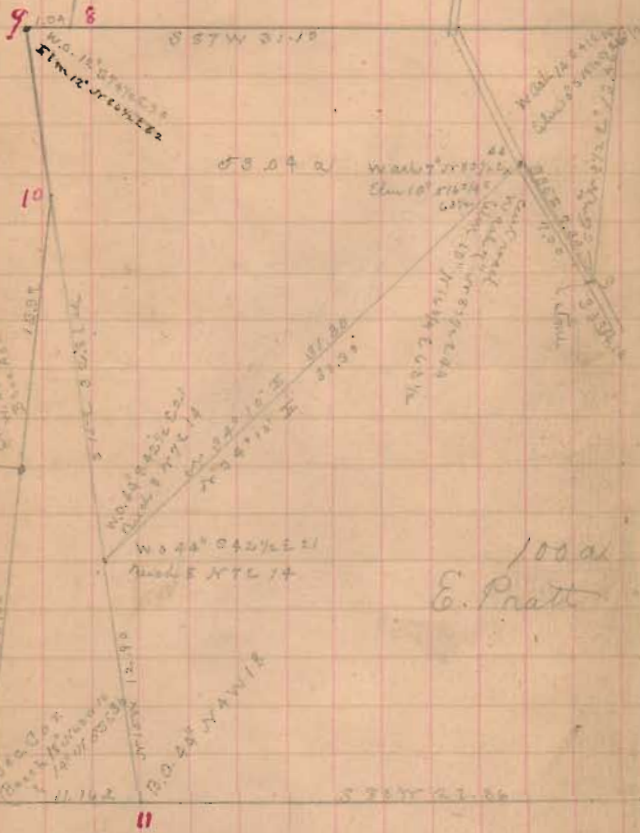


Pratt Survey

Bloomfield Twp.

26



*100 ac
E. Pratt*

$\frac{34.10}{1.12}$
 $\frac{32.10}{1.12}$



*W. H. Rogers
26 ac*

722
INDEXED ON MAP

Mitchell

Homestead Pratt Run

Dec 21 - 86

A. J. Smith } chain carriers

James Milbrin }

John S. Daper Martin Flag

Jan S. Milbrin

At 2 old brown oak 22"

old 9' oak. produce - and

in air old Elm oak

oak & hit some stone 11' x 17' in

2 side ditch. 9' 22' oak N 54 E 13

and cut across pike S 77 27 links

Line a

trace S 34 E

730 post cut pike & Or. H. Rogers

Line b

trace S 36 E out from pike

4.19 stone planted. & Rogers original 10' link

Ort Red Oak 12' or 15' 1/2 E 65 1/2 links

" Red Oak 5' S 15 1/2 W 115 links

74 1/4
13 1/2
75 1/2 23

Line c. Then a on line of H. Rogers

or 77 1/4 E Band CC N 75 1/2 E

7.15 double Pin Oak ^{4' each} make <

fall 20 south of <

trace on line 7.15

Line d. Then a

55 6 1/2 E

2.16 < set stone 14 x 8 x 9

Ort Red Oak 15' S 62 W 76 1/2 links

" Or. Oak 15' N 52 3/4 W 58 links

found old < stone at this <

Line e.

trace Band 8' 38 E CE S 74 1/2 E

3.56 W line 14' x 16' on River W Bank

fall 10 links to R = South

Ort Or. ash (old oak) Or 36 E 29 links

" Or. O. 2' 4' Or 17 1/2 W 44 links

" Red Oak 5' S 56 Or 25 "

Lime F. Grand. River

- S 17 E 3.11 ch aug 1
- S 41 3/4 E 6.81 " " 2
- S 25 E 4.09 " " 3
- S 3 1/4 W 1.20 pass cut pike at Bar
- " 2.10 ch aug 4
- S 17 1/4 W 5.92 " " 5
- S 37 3/4 W 2.11 " " 6
- S 83 3/4 W 2.60 " " 7
- N 74 1/4 W 4.77 " " 8
- S 36 3/4 W 9.57 " " 9

on Treaty line

at NW corner 96a on Dr line of
 Stewart Sec. Find old post
 Birch 16" old cut. 14 links
 W. Oak 2 1/2" or 2 1/2" or 69"
 W. O. stump 4 1/2" S 4 1/2 E
 Red Elm 3" S 5 1/4 E 2 1/2 links
 Planted lime tree 18" x 12" x 5"

Lime F. Start 15 links W of stone
NW corner 96a

- S 66 1/2 E Grand CC S 15 1/2 E
- S 52 1/2 W 14 links W of marked tree at
- 12.90 Fall 16 links NW of - SW corner
- planted stone orig post 18" x 10" x 7"
- Post on line 25" or 1 1/4 or 13 1/2 links
- " W. Oak 20" or 7 1/2 or 83"
- " Red Oak 5" S 7 1/2 W 42 1/2 links

Lime F. Start 20 links NW of stone
SW corner 96a on Treaty line

- or S 1 1/2 E CC N 8 1/2 E
- 2 1/2 00 cut dist stake
- 2 3/4 5 " line "
- then cut 20 links
- 55.67 cut W. O. stump
- Fall 20 links North line
- 25.00 Fall 13 links S of line

Line H. cont.

23.32 set on 2 E links to post
planted stone for line ^{line} 18' x 12' x 6'

Dr. O. 18" S 43 3/4 W 37 1/2 links

Pick 4' N 86 1/4 W 8 1/2 "

Reck 30" S 13 1/4 E 21 1/2 links

281 W 7 1/2' 6" line to 31 links

23.75 set on or Bank Riv

S 2 - 96a

Line I start at stone on

E side pipe S 2 - 96a

S 32 3/4 W Round CC S 32 1/2 W

12.00 out

15.00 . . .

20.00 . . . set on 5.40 link

set post (1/2) 3 links

31.53 (deduct 22) = 9.33 fall

55 links most of stone

Var 8 1/2 links on in SW