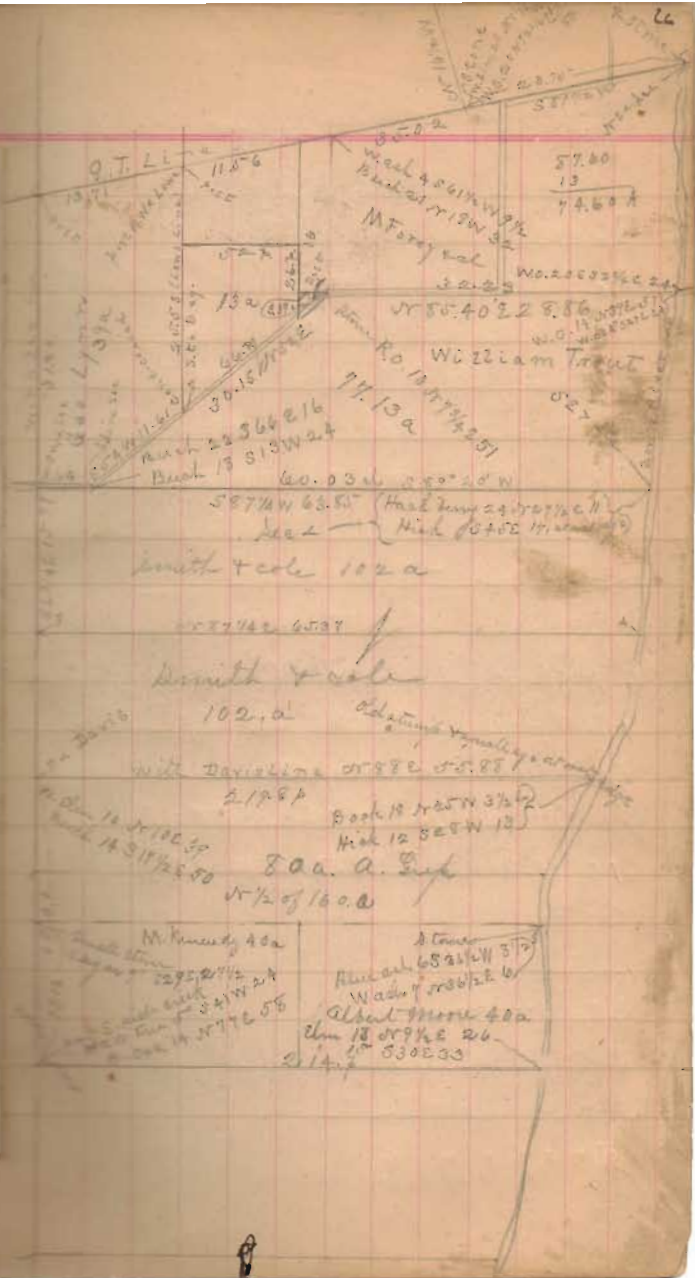
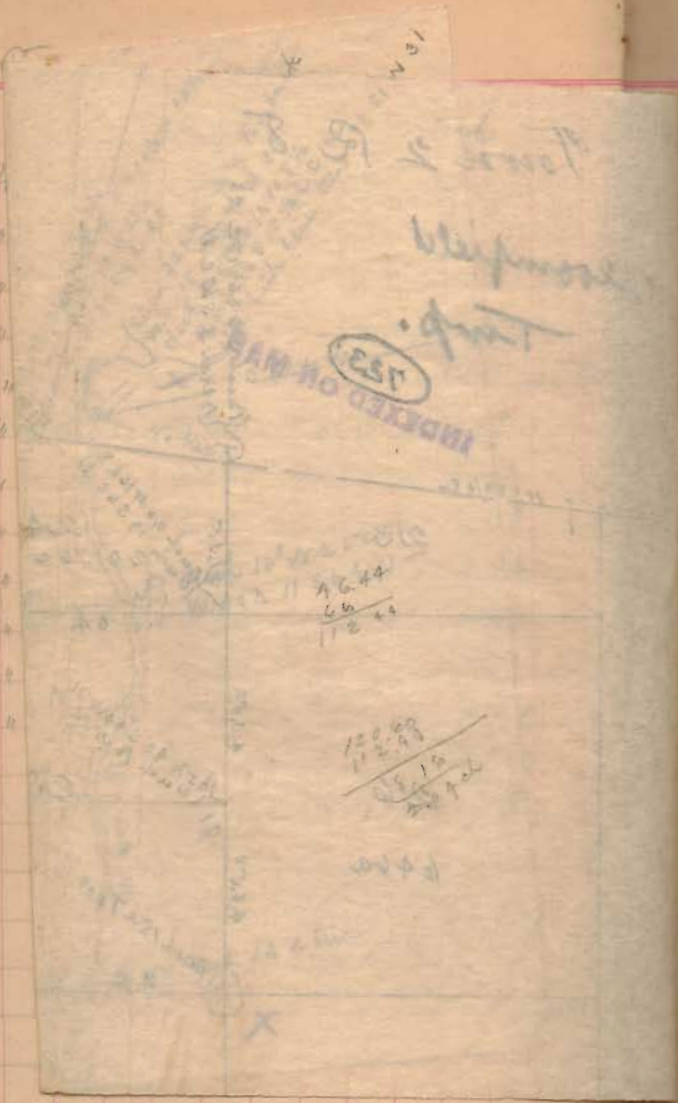


Traverse Table

	Dep.	Dep.
1/4°	for 100 = .44	for 80 = .35
1/2°	87	71
3/4°	1.31	1.05
1°	1.76	1.40
1 1/4°	2.18	1.75
1 1/2°	2.62	2.09
1 3/4°	3.05	2.44
2°	3.49	2.79
2 1/4°	3.93	3.14
2 1/2°	4.36	3.49
2 3/4°	4.80	3.84
3°	5.23	4.19



1/4  
 1/2  
 3/4  
 1  
 1 1/4  
 1 1/2  
 1 3/4  
 2  
 2 1/4  
 2 1/2  
 3



INDEXED ON MAP  
 EST

$$\frac{1176.44}{66} = 17.82$$

$$\frac{120.00}{112.93} = 1.06$$

57.00  
 13  
 74.60

N 50° 40' 22" E 8.86  
 W 22 1/2° E 22.51  
 11.13a

Smith & Cole 102 a

Smith & Cole

102 a

800 a. a. Surf

1/2 of 1600

A corner  
 65° 21' 11" W 37  
 Wash 7 rods E 6  
 about more 40a  
 18 or 9 1/2 26  
 530233

Tourist and Cable Lines Dec 7-87

Edwin Leaver }  
Gas Leaver } sh on summit

Line A. Wind trip O.P.T. over  
cut + find back dit Boulder stone  
3' x 9' x 16" at 2745 W 172 from high  
stone stands on edge of Bir Banks 10 ft from  
edge of road,

10.51. 23" O.P.T. 345E 17 1/2

W. High 13" S 69 1/2 W 28 links

High baray 30" S 27 1/4 W 87 links

Start 200 links N of stone

S 87 W Road. c.c. S 77 3/4 W

10.00 dit 7 in line

20.00 " " " "

dit N orth 20 links

30.00 dit 8 in line

dit N 20 links

40.00 dit 7 in line

50.00 " " " "

at ground surface of 2 Buckle 2 B 3  
and made by thin. fluted boulder stone  
3' x 9' x 17" pat dup. took with as follows

direction 10' or 78E 120 links

W. dit 20' S 11 1/2 E 22 1/2 "

dit S E through house N 53 1/4 W 149 "

dit S. dit fall 20 links south of stone  
plastic as above, at terminal with

52 links, on stands on sand of  
20 in mud

5 north 8 1/2

4 south 6 1/2

3 north 4

2 south 7 1/2

1 south 6 1/2



Leire B. go to NE & front at  
Pinn. field & at stone out by old  
planted boulder stone 15' x 10' x 5'

Wit W. Oak 28' 0 BT S 26 E 24 links  
Red Oak 10' S 72 W 42 links  
Gr. Oak 10' N 16 E 47 "

Stone stands 43 links from road  
Start 1/10 links N of stone

S 24 1/2 W 76.69 m

planted boulder 5' x 7' x 10'

at angle of road at stone turn line

2.8/86 planted lime stone 9' x 2' x 16'

at < in aug of road, fall 10' x 1/2

Wit W. Oak 14' 0 BT E 31 links

and Gr. Oak 24' 0 BT 2 1/4 W 14 1/2 "

Leire B.

Start at stone & across

S 58 1/2 W

30.31 strike stone & incline

at W end line a

Leire B. Muanoh River

Start at N E & front

S 13 E

10.00 aug.

S 27 E

20.50 SE & front