

DUANE BROWN SURVEY
SEC. 25, T. 2, R. 8
BLOOMFIELD TOWNSHIP
November 13, 1954

The following described real estate situated in Bloomfield Township, Logan County, Ohio and being part of the Southwest Quarter of Fractional Section 25, Town 2, Range 8 of the Miami River Survey and more particularly described as follows:

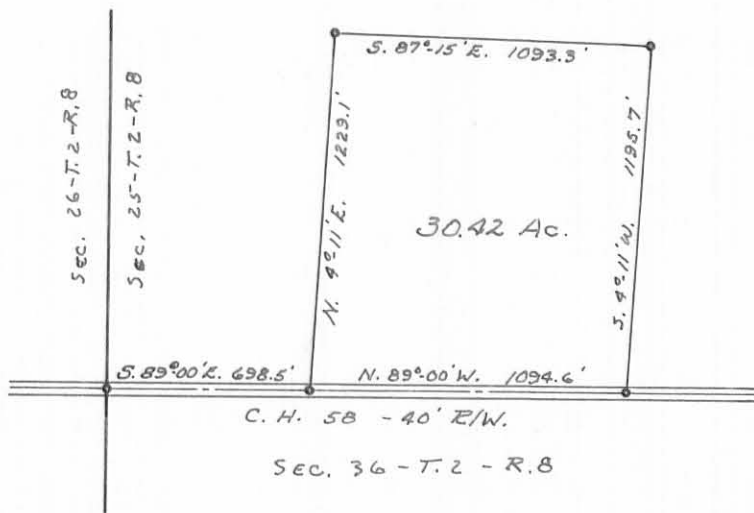
Commencing at a stone in the center of County Highway #58 at the Southwest corner of said Section 25, Town 2, Range 8 as shown on Page 41 of the Logan County Engineer's Field Book #601; thence with the center line of said County Highway #58, S. 89°-00' E. 698.5 feet to an iron pipe, said pipe being the beginning point of this description; thence N. 4°-11' E. 1229.1 feet to a stake in the South line of a 40.0 acre tract, presently belonging to Ferrell M. Shultz; thence with said Shultz's South line S. 87°-15' E. 1093.3 feet to a concrete post at the Southeast corner of said Shultz's tract and the Northwest corner of a 48.14 acre tract, presently belonging to Robert Whitehead; thence with said Whitehead's West line S. 4°-11' W. 1195.7 feet to an iron pipe in the center of said County Highway #58; thence with said center line N. 89°-00' W. 1094.6 feet to the place of beginning.

Containing 30.42 acres more or less.

2768

10

INDEXED ON MAP



DUANE BROWN SURVEY
 SECTION 25-T.2-R.8
 BLOOMFIELD TOWNSHIP
 LOGAN COUNTY, OHIO
 NOVEMBER 13, 1954
 SCALE: 1" = 660'

2768 IF

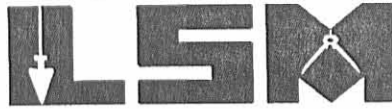
INDEXED ON MAP

DRAWN BY D.E.G.
 5-1-63

REC'D 9-25-01 6M OK

Lee Surveying and Mapping Co., Inc.

Land Surveys • Topography • Subdivisions • Construction Layout



117 N. Madriver St.
Bellefontaine OH 43311

Phone: (937) 593-7335
Fax: (937) 593-7444

WHITEHEAD 4.157 ACRES

Lying in Section 25, Town 2, Range 8, Bloomfield Township, Logan County, Ohio.

Being out of the Howard A. Whitehead original 30.42 acre tract as deeded and described in Official Record 503, Page 403, Tract II of the Logan County Records of Deeds and being more particularly described as follows:

Beginning at a P.K. nail over stone found at the southwest corner of Section 25, on the center-line of County Highway 58 (48 feet wide).

THENCE, with the south line of Section 25, and the center-line of County Highway 58, S 83°-00'-00" E, a distance of 698.32 feet to a harrow tooth found at the TRUE POINT OF BEGINNING.

THENCE, with the east lines of the Duane Brown 3.575 acre tract (O.R. 376, Pg. 839) and the William W. Shultz original 49.0 acre tract (Vol. 396, Pg. 292), N 10°-06'-34" E, a distance of 1228.06 feet to a 5/8 inch iron rod set, passing a 5/8 inch iron rod found at 23.91 feet.

THENCE, with the south line of the Susan B. Shultz 40.0 acre tract (O.R. 32, Pg. 922, Tract II), S 81°-19'-26" E, a distance of 366.00 feet to a 5/8 inch iron rod set.

THENCE, S 10°-06'-34" W, a distance of 119.24 feet to a 5/8 inch iron rod set.

THENCE, S 49°-18'-01" E, a distance of 43.70 feet to a 5/8 inch iron rod set.

THENCE, S 2°-13'-51" W, a distance of 133.52 feet to a 5/8 inch iron rod set.

THENCE, S 31°-43'-15" W, a distance of 129.50 feet to a 5/8 inch iron rod set.

THENCE, N 82°-37'-02" W, a distance of 344.50 feet to a 5/8 inch iron rod set.

THENCE, S 10°-06'-34" W, a distance of 825.06 feet to a MAG nail set, passing a 5/8 inch iron rod set at 801.02 feet.

THENCE, with the south line of Section 25 and the center-line of County Highway 58, N 83°-00'-00" W, a distance of 30.04 feet to the point of beginning.

Containing 4.157 acres, of which 0.017 acre is within the highway right-of-way.

The basis for bearings is the south line of Section 25, being S 83°-00'-00" E, and all other bearings are from angles and distances measured in a field survey by Lee Surveying and Mapping Co., Inc. on September 17, 2001.

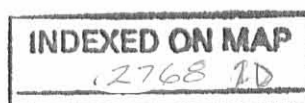
Description prepared by:



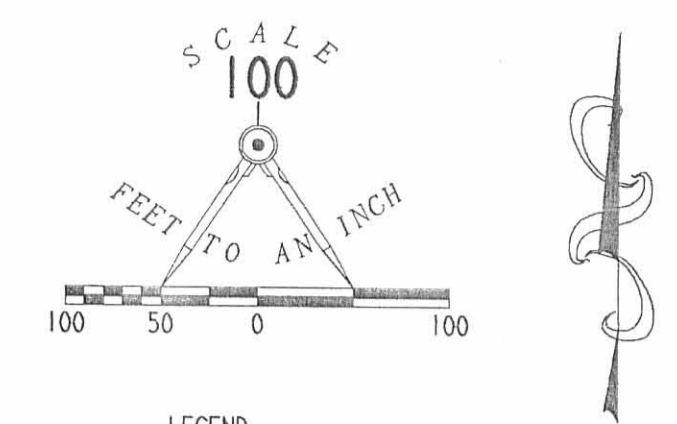
ORIGINAL STAMP IN GREEN

Jeffrey I. Lee
Jeffrey I. Lee
Professional Surveyor 6359
September 21, 2001

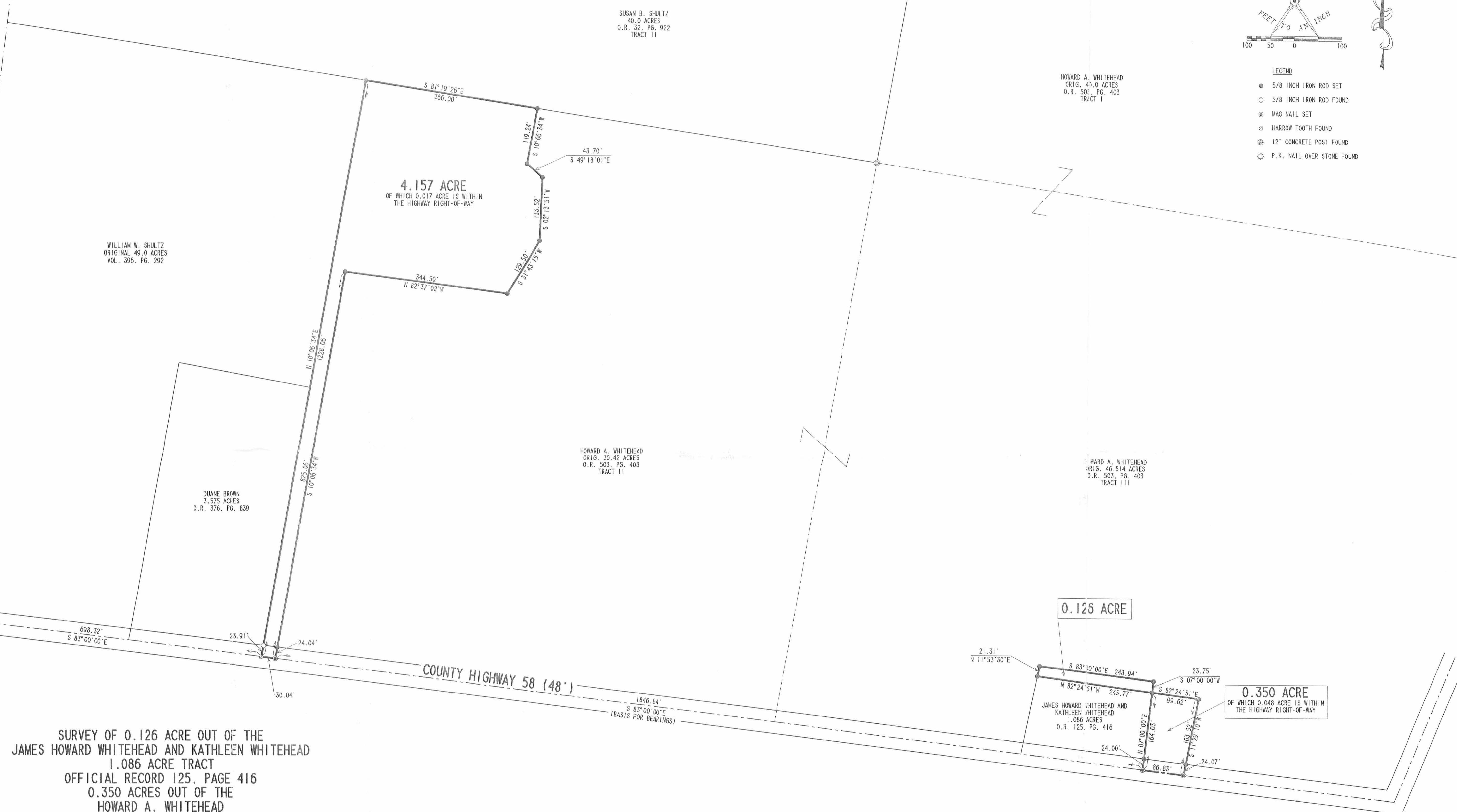
L-775



SEE R-6506 FOR
PLAT.



- LEGEND
- 5/8 INCH IRON ROD SET
 - 5/8 INCH IRON ROD FOUND
 - ⊙ MAG NAIL SET
 - ⊙ HARROW TOOTH FOUND
 - ⊙ 12" CONCRETE POST FOUND
 - P.K. NAIL OVER STONE FOUND



SURVEY OF 0.126 ACRE OUT OF THE
 JAMES HOWARD WHITEHEAD AND KATHLEEN WHITEHEAD
 1.086 ACRE TRACT
 OFFICIAL RECORD 125, PAGE 416
 0.350 ACRES OUT OF THE
 HOWARD A. WHITEHEAD
 ORIGINAL 46.514 ACRE TRACT
 OFFICIAL RECORD 503, PAGE 403, TRACT III
 AND 4.157 ACRES OUT OF THE
 HOWARD A. WHITEHEAD
 ORIGINAL 30.42 ACRE TRACT
 OFFICIAL RECORD 503, PAGE 403, TRACT II
 SECTION 25, TOWN 2, RANGE 8
 BLOOMFIELD TOWNSHIP
 LOGAN COUNTY, OHIO

2 WORKING DAYS
BEFORE YOU DIG
 CALL TOLL FREE 800-362-2764
 OHIO UTILITIES PROTECT ON SERVICE.

SURVEYED BY:
 JEFFREY L. LEE
 PROFESSIONAL SURVEYOR 6359
 SEPTEMBER 17, 2001

COPYRIGHT 2001 BY:
LEE SURVEYING & MAPPING CO., INC.
 117 North Madison Street
 BELLEFONTAINE, OHIO 43311
 (937) 593-7335

ORIGINAL STAMP IN GREEN

D 404 HOWHITE L-775-1

INDEXED ON MAP
 6506 P

Duane Brown Survey
Bloomfield Twp.

SECTION 25 TOWN 2 RANGE 8



Sec. Stone
Found

698.5'
C.I. # 58

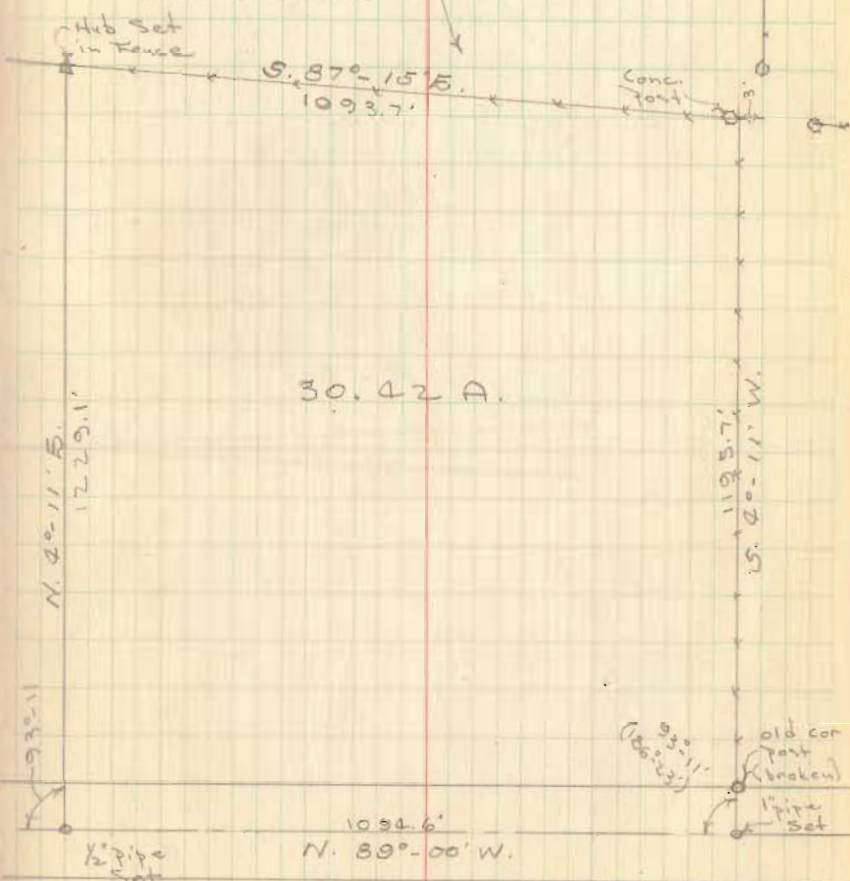
INDEXED ON MAP
2768

Dodson
Richardson

Nov 13, 1952
60°

20

Note ~
North Fence line very crooked
follows Creek



30.42 A.

2

12-23-16

APPROVED

Lee Surveying and Mapping Co., Inc.

Land Surveys • Topography • Subdivisions • Construction Layout

117 N. Madriver St.
Bellefontaine OH 43311



Phone: (937) 593-7335
Fax: (937) 593-7444
surveys@lsminc.us

BUTLER 0.125 ACRE

Lying in Section 25, Town 2, Range 8, Bloomfield Township, Logan County, Ohio.

Being out of the Rhonda Dee Butler 2.000 acre tract as deeded and described in Official Record 1149, Page 155 of the Logan County Records of Deeds and being more particularly described as follows:

Commencing on a PK nail found on the southwest corner of Section 25 on the center-line of County Highway 58.

THENCE, with the south line of Section 25 and the center-line of County Highway 58 (48 feet wide), S 82°-59'-33"E, a distance of 728.36 feet to a MAG nail found.

THENCE, with an east line of the Rhonda Dee Butler and Timothy Eugene Butler 4.157 acre tract (O.R. 523, Pg. 489), N 10°-06'-34"E, a distance of 764.26 feet to a 5/8 inch iron rod set at the TRUE POINT OF BEGINNING, passing a 5/8 inch iron rod found at 24.04 feet.

THENCE, with the lines of the said 4.157 acre tract, the following two courses:

N 10°-06'-34"E, a distance of 60.72 feet to a 5/8 inch iron rod found.

S 82°-37'-02"E, a distance of 105.77 feet to a 5/8 inch iron rod found.

THENCE, with the west line of the Howard A. Whitehead 26.263 acre tract (O.R. 1081, Pg. 868), S 10°-06'-34"W, a distance of 42.08 feet to a 5/8 inch iron rod set.

THENCE, S 87°-28'-45"W, a distance of 108.27 feet to the point of beginning.

Containing 0.125 acre.

Property is subject to any and all previous easements and rights-of-way of record.

The basis for bearings is the south line of Section 25, being S 82°-59'-33"E, and all other bearings are from angles and distances measured in a field survey by Lee Surveying and Mapping Co., Inc. on November 29, 2016.



Description prepared by:

Jeffrey I. Lee
Professional Surveyor 6359
December 2, 2016

7551116

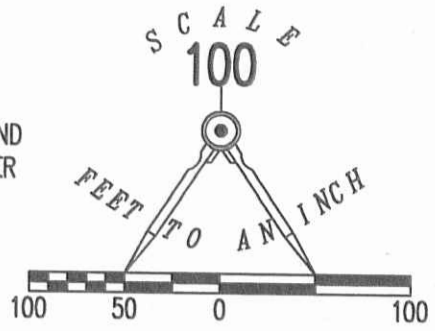
ORIGINAL STAMP IN GREEN

INDEXED ON MAP
2768 3D

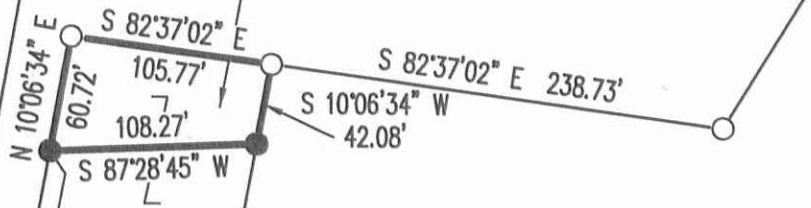
LEGEND:

- ⊕ PK NAIL FOUND
- ⊙ MAG NAIL FOUND
- 5/8 INCH IRON ROD FOUND
- 5/8 INCH IRON ROD SET WITH PLASTIC I.D. CAP STAMPED "LSM"

RHONDA DEE BUTLER AND
TIMOTHY EUGENE BUTLER
4.157 ACRES
O.R. 523, PG. 489

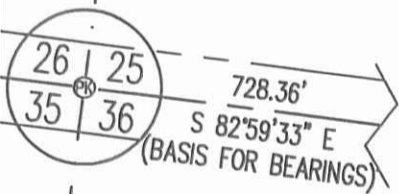


0.125 ACRE



N 10°06'34" E
764.26'
RHONDA DEE BUTLER
2.000 ACRES
O.R. 1149, PG. 155

HOWARD A. WHITEHEAD
26.263 ACRES
O.R. 1081, PG. 868



COUNTY HIGHWAY 58 (48')

**SURVEY OF 0.125 ACRE OUT OF THE
RHONDA DEE BUTLER
2.000 ACRE TRACT
OFFICIAL RECORD 1149, PAGE 155
SECTION 25, TOWN 2, RANGE 8
BLOOMFIELD TOWNSHIP
LOGAN COUNTY, OHIO**

NOTE:

THIS PARCEL IS TO BE ATTACHED TO AN ADJOINING TRACT OF LAND AND IS NOT TO BE USED AS A SEPARATE AND INDEPENDENT PARCEL.

INDEXED ON MAP
2768 3P

THIS SURVEY WAS PREPARED IN THE ABSENCE OF A COMPLETE AND ACCURATE TITLE SEARCH AND DOES NOT GUARANTEE TITLE.



SURVEYED BY:
[Signature]
JEFFREY I. LEE
PROFESSIONAL SURVEYOR 6359
NOVEMBER 29, 2016

COPYRIGHT 2016 BY:
LEE SURVEYING & MAPPING CO., INC.
117 North Madriver Street
BELLEFONTAINE, OHIO 43311
(937) 593-7335
WWW.LSMINC.US
surveys@lsminc.us

2 WORKING DAYS
BEFORE YOU DIG
CALL TOLL FREE **800-362-2764**
OHIO UTILITIES PROTECTION SERVICE

ORIGINAL STAMP IN GREEN

Lee Surveying and Mapping Co., Inc.

Land Surveys • Topography • Subdivisions • Construction Layout

117 N. Madriver St.
Bellefontaine OH 43311



Phone: (937) 593-7335
Fax: (937) 593-7444
surveys@lsminc.us

WHITEHEAD 2.000 ACRES

Lying in Section 25, Town 2, Range 8, Bloomfield Township, Logan County, Ohio.

Being out of the Howard A. Whitehead and Delores M. Whitehead 26.263 acre tract as deeded and described in Official Record 1081, Page 868 of the Logan County Records of Deeds and being more particularly described as follows:

Commencing on a PK nail found on the southwest corner of Section 25 on the center-line of County Highway 58.

THENCE, with the south line of Section 25 and the center-line of County Highway 58 (48 feet wide), S 82°-59'-37"E, a distance of 728.36 feet to a MAG nail found at the TRUE POINT OF BEGINNING.

THENCE, with the lines of the Rhonda Dee Butler and Timothy Eugene Butler 4.157 acre tract (O.R. 523, Pg. 489), the following two courses:
N 10°-06'-34"E, a distance of 824.98 feet to a 5/8 inch iron rod found, passing a 5/8 inch iron rod found at 24.04 feet.

S 82°-37'-02"E, a distance of 105.77 feet to a 5/8 inch iron rod set.
THENCE, S 10°-06'-34"W, a distance of 824.25 feet to a MAG nail set on the south line of Section 25 and the center-line of County Highway 58, passing a 5/8 inch iron rod set at 800.21 feet.

THENCE, with the south line of Section 25 and the center-line of County Highway 58, N 83°-00'-41"W, a distance of 105.81 feet to the point of beginning.

Containing 2.000 acres, of which 0.058 acre is within the highway right-of-way.

Property is subject to any and all previous easements and rights-of-way of record.

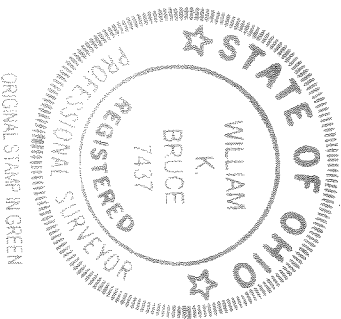
The basis for bearings is the south line of Section 25, being S 82°-59'-37"E, and all other bearings are from angles and distances measured in a field survey by Lee Surveying and Mapping Co., Inc. on May 23, 2014.

Description prepared by:

William K. Bruce
William K. Bruce
Professional Surveyor 7437

May 28, 2014

7550514



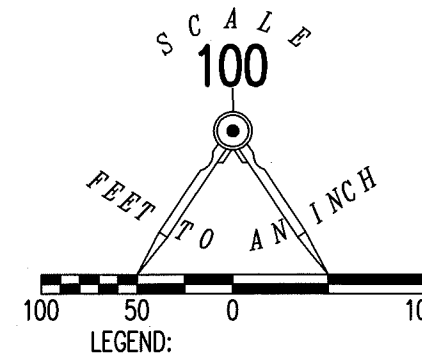
ORIGINAL STAMP IN GREEN



APPROVED

2 WORKING DAYS
BEFORE YOU DIG
CALL TOLL FREE **800-362-2764**
OHIO UTILITIES PROTECTION SERVICE

RHONDA DEE BUTLER AND
TIMOTHY EUGENE BUTLER
4.157 ACRES
O.R. 523, PG. 489



2.000 ACRES
OF WHICH 0.058 ACRE IS WITHIN
THE HIGHWAY RIGHT-OF-WAY

HOWARD A. WHITEHEAD AND
DELORES M. WHITEHEAD
26.263 ACRES
O.R. 1081, PG. 868

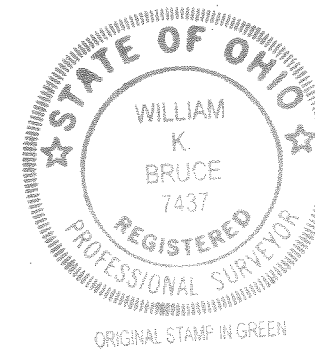
**SURVEY OF 2.000 ACRES OUT OF THE
HOWARD A. WHITEHEAD AND
DELORES M. WHITEHEAD
26.263 ACRE TRACT
OFFICIAL RECORD 1081, PAGE 868
SECTION 25, TOWN 2, RANGE 8
BLOOMFIELD TOWNSHIP
LOGAN COUNTY, OHIO**

SURVEYED BY:

William K. Bruce

WILLIAM K. BRUCE
PROFESSIONAL SURVEYOR 7437
MAY 23, 2014

COPYRIGHT 2014 BY:
LEE SURVEYING & MAPPING CO., INC.
117 North Madriver Street
BELLEFONTAINE, OHIO 43311
(937) 593-7335
WWW.LSMINC.US
surveys@lsminc.us



KSS D0514 7550514 L-755-3

COUNTY HIGHWAY 58 (48')

26 25
35 36

728.36'
S 82°59'37" E
(BASIS FOR BEARINGS)

24.04'
105.81'
N 83°00'41" W
24.04'

N 10°06'34" E
824.98'

S 10°06'34" W
824.25'

S 82°37'02" E
105.77'

S 82°37'02" E
238.73'

INDEXED ON MAP
2768