

BRUNNER SURVEY

Sec. 26-27, T-2, R-8  
Bloomfield Township  
May 31, 1958

The following described real estate situated in Bloomfield Township, Logan County, Ohio and being part of the southwest 1/4 of Section 26, Town 2, Range 8 and the southeast 1/4 of Section 27, Town 2, Range 8 of the Miami River Survey and more particularly described as follows:

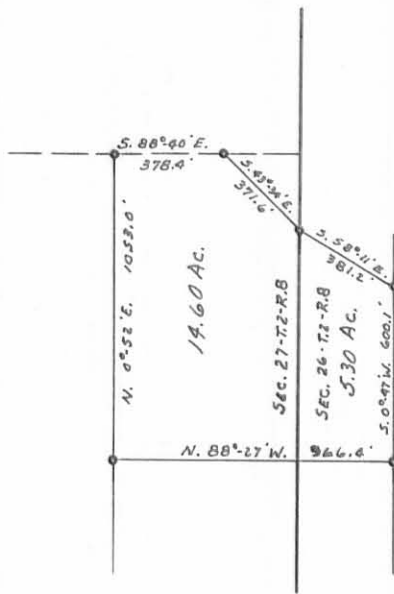
Beginning at a post in the north line of said southeast 1/4 section 27, T-2, R-8 and at the northeast corner of Carl L. Brunner's 60.80 acre tract; thence with said 1/4 section line S. 88°-40' E. 378.4 feet to a post, crossing Run Creek at 40 feet; thence S. 43°-34' E. 371.6 feet to a post, crossing the line between Section 26 and 27; thence S. 58°-11' E. 381.2 feet to a post in the west line of Franklin Hammond's 54.00 acre tract; thence with said west line S. 0°-47' W. 600.1 feet to a post at the northeast corner of Carl L. Brunner's 12.14 acre tract; thence with the north line of said tract N. 88°-27' W. 966.4 feet to a post in the east line of Carl L. Brunner's 60.80 acre tract, crossing the line between Section 27 and 26; thence with said east line N. 0°-52' E. 1053.0 feet to the place of beginning, crossing Run Creek at 1030 feet.

Containing 19.90 acres more or less of which 5.30 acres are in Section 26, T-2, R-8 and 14.60 acre are in Section 27, T-2, R-8.

2769 ID

INDEXED ON MAP

*on Plat Book*



BRUNNER SURVEY  
 SEC. 26-27, T.2, R.8  
 BLOOMFIELD TOWNSHIP  
 LOGAN COUNTY, OHIO  
 MAY 31, 1958  
 SURVEYED BY DAN L. DODSON  
 SCALE: 1" = 660'

2769

1P

INDEXED ON MAP